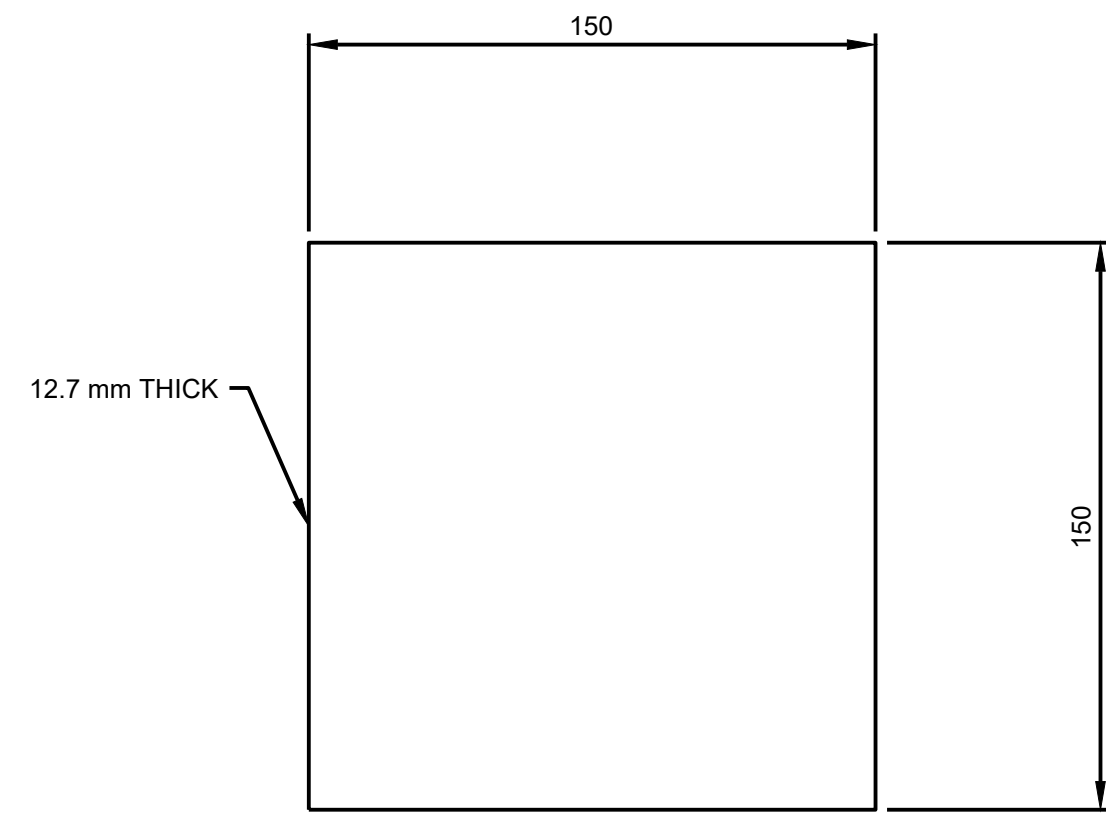
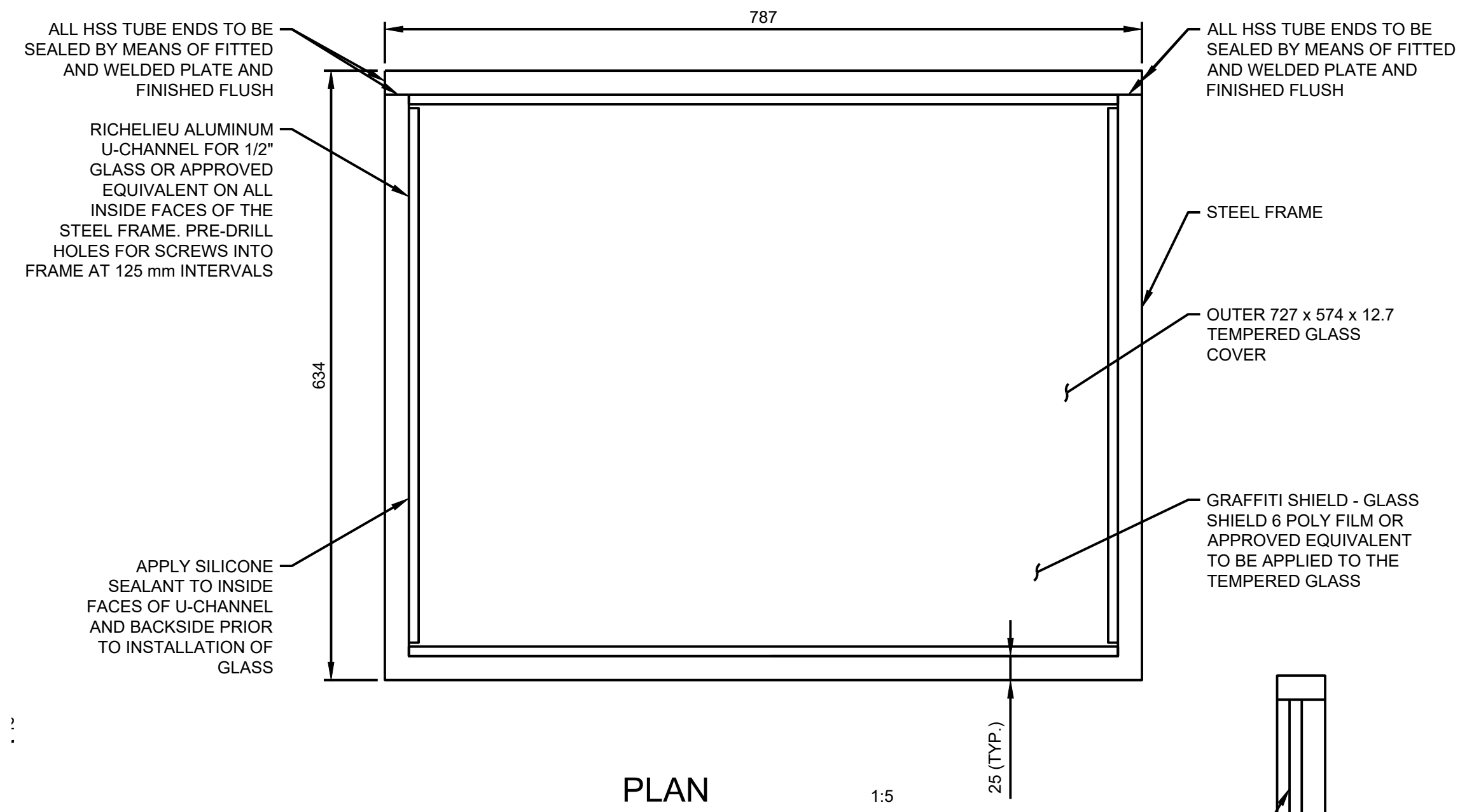


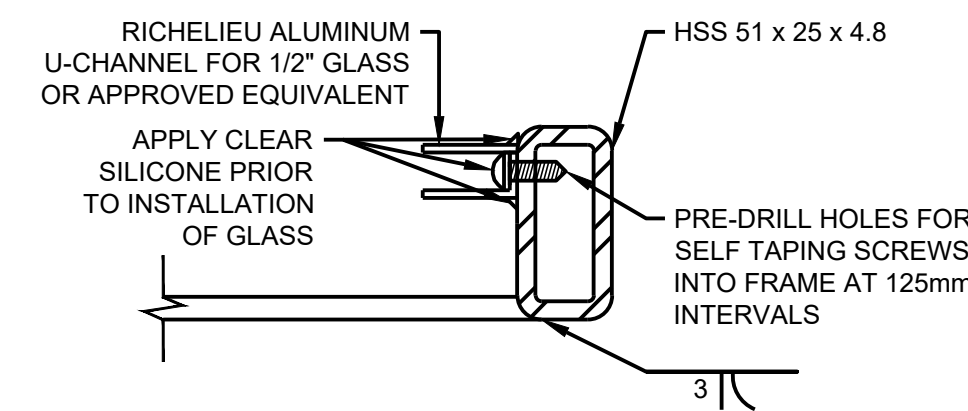
PLAN 1:2
BASE PLATE



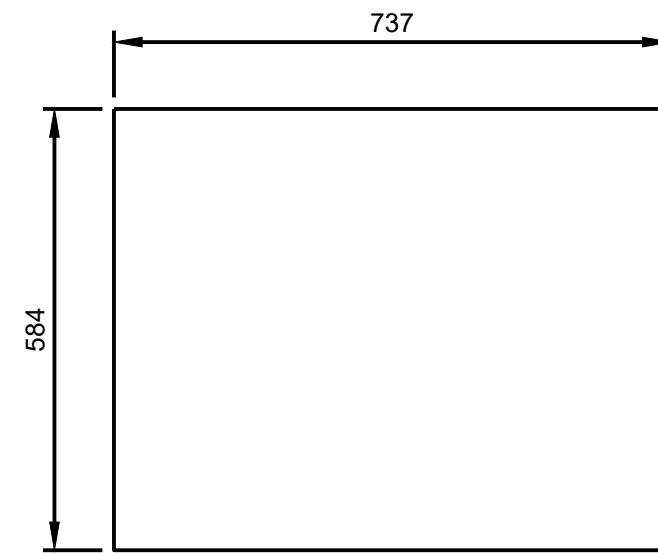
PLAN 1:5
MOUNTING BRACKET



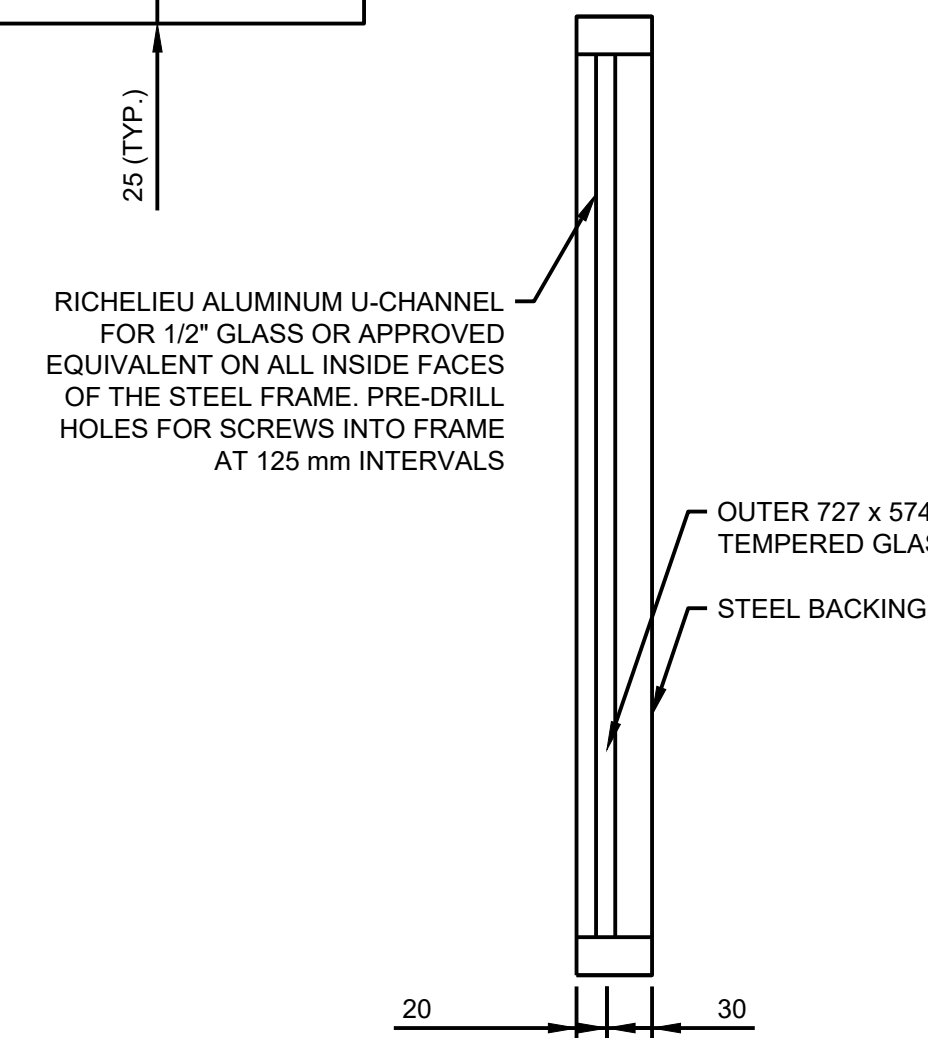
PLAN 1:5
FRAME ASSEMBLY



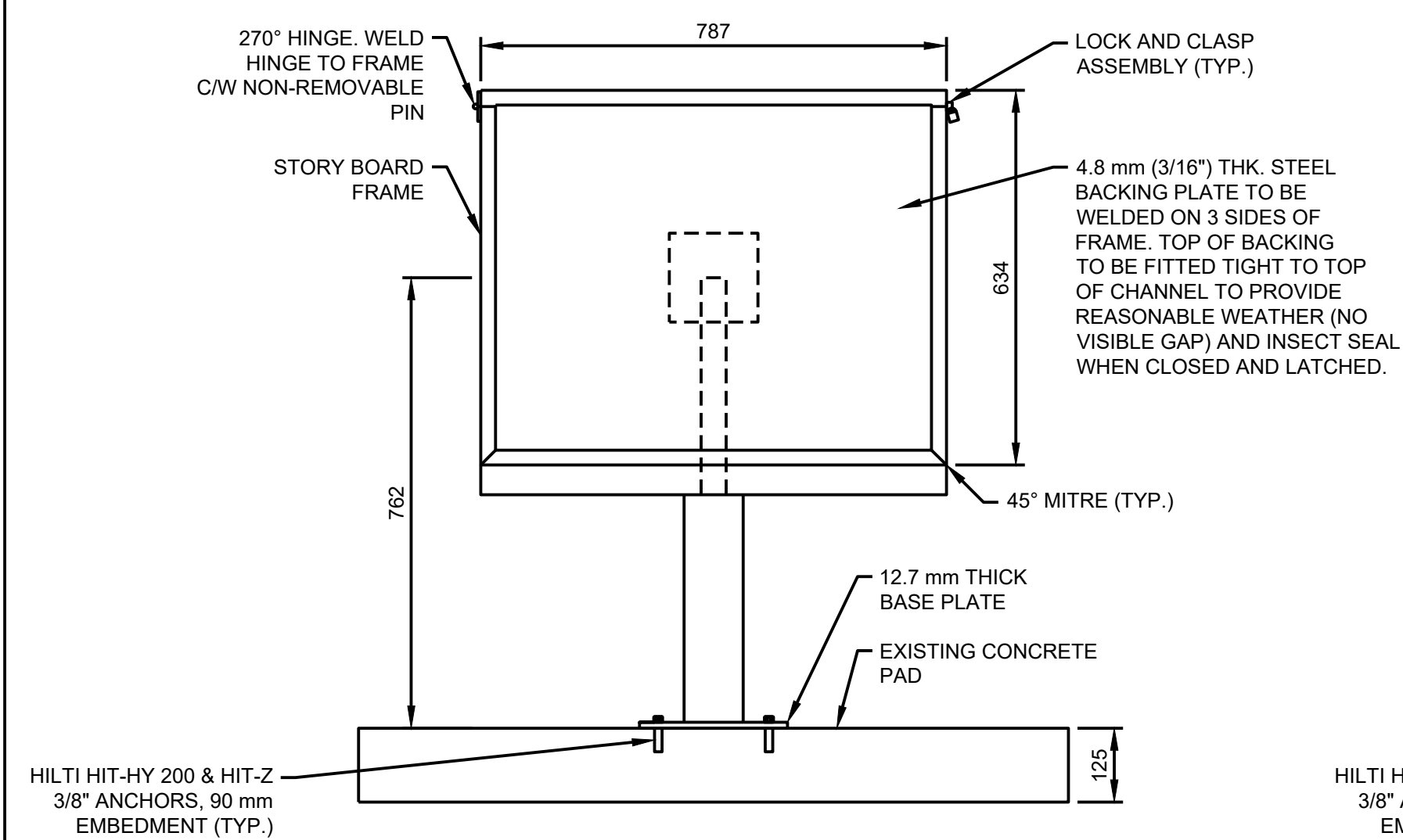
SECTION 1:2
MOUNTING CHANNEL



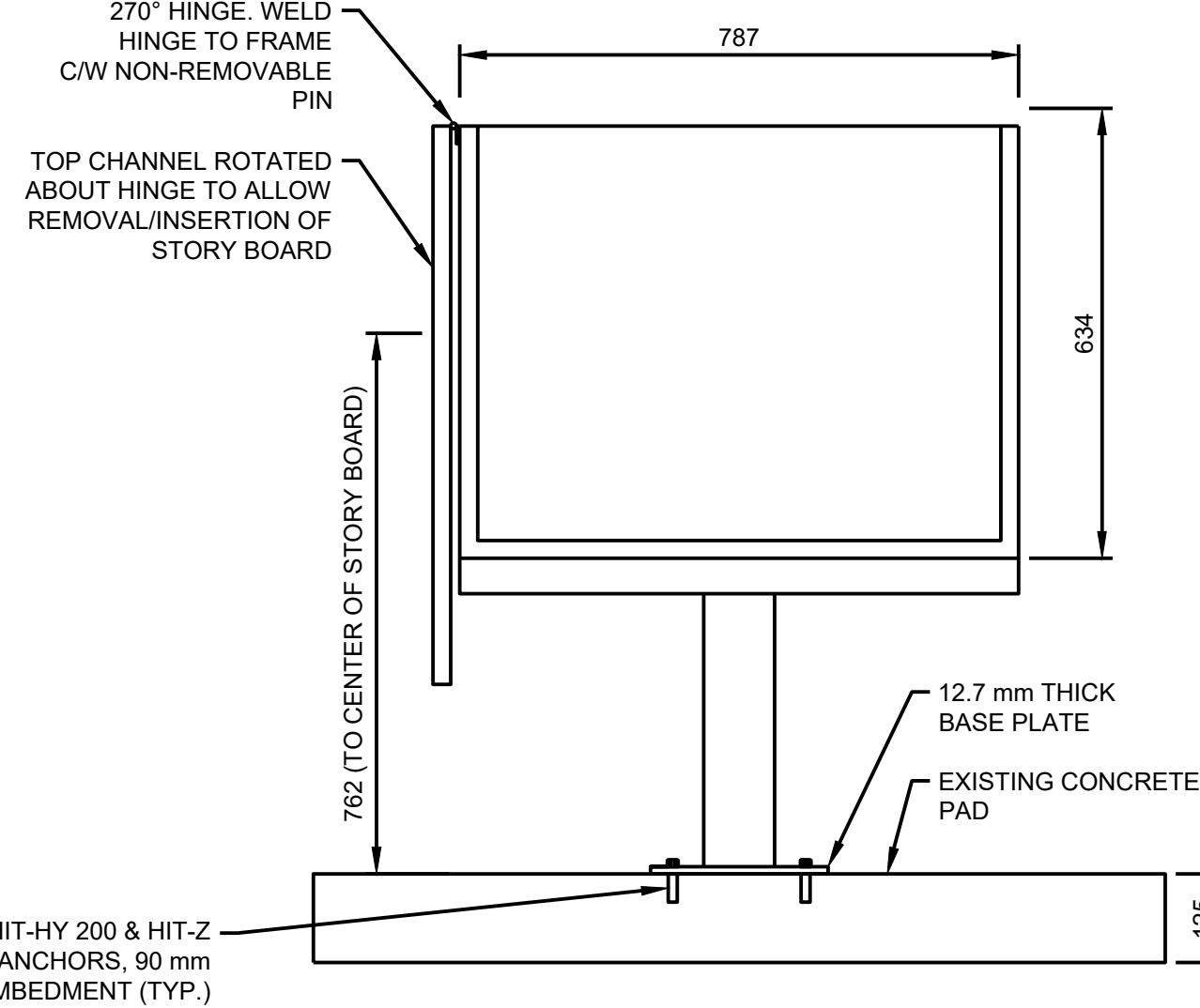
PLAN 1:10
BACK PLATE



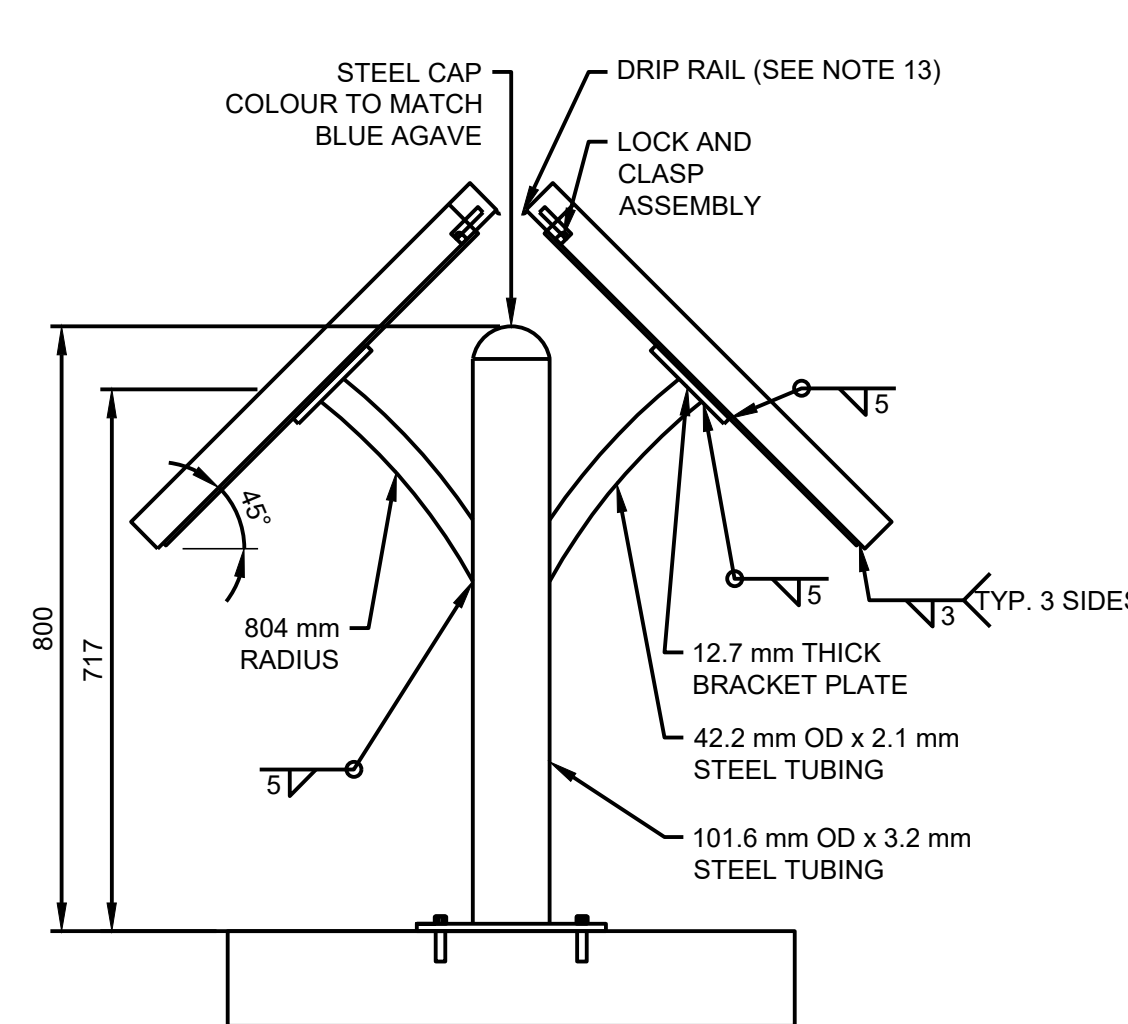
- NOTES:
- ALL DIMENSIONS IN mm UNLESS OTHERWISE NOTED.
 - STRUCTURAL STEEL SHALL BE IN ACCORDANCE WITH CSA G40.21.
 - STEEL TUBING SHALL BE IN ACCORDANCE WITH ASTM A500.
 - WELDING SHALL BE DONE IN ACCORDANCE WITH CSA W59.
 - ALL WELDS SHALL BE SHOP WELDS.
 - GRIND DOWN ALL WELDS.
 - ALL FASTENERS SHALL BE HOT DIP GALVANIZED ACCORDING TO ASTM A123 AFTER FABRICATION.
 - ZINC PRIMER TO BE APPLIED TO STEEL FRAME PRIOR TO POWDER COATING.
 - POWDER COAT THE ENTIRE STEEL SIGN STRUCTURE AS A UNIT. POWDER COATING TO BE MADE WITH CUSTOM MIX NIAGARA FALLS TEAL (PARA PAINT: BLUE AGAVE B800-S EQUIVALENT), PRIOR TO POWDER COATING. BLAST PREPARATION TO BE COMPLETED TO NEAR WHITE METAL BLAST CLEANING AS PER SSPC SP-10 AND IN ACCORDANCE WITH MANUFACTURERS RECOMMENDATIONS.
 - GRAFFITI SHIELD - GLASS SHIELD 6 POLY FILM OR APPROVED EQUIVALENT TO BE APPLIED IN ACCORDANCE WITH THE CORRESPONDING PRODUCT SPECIFICATIONS.
 - APPLY SILICONE SEALANT ALONG OPENING OF TOP CHANNEL TO WATERPROOF WHILE SIGN IS CLOSED.
 - FABRICATOR TO CONFIRM GLASS DIMENSIONS PRIOR TO ORDERING TO ENSURE FIT.
 - DRIP RAIL SHALL BE AT LEAST 15mm IN HEIGHT, AND EXTEND THE FULL LENGTH OF THE TOP CAP. THE THICKNESS SHALL BE AT LEAST 2mm, BUT NO MORE THAN THE THICKNESS OF THE HSS TUBE.



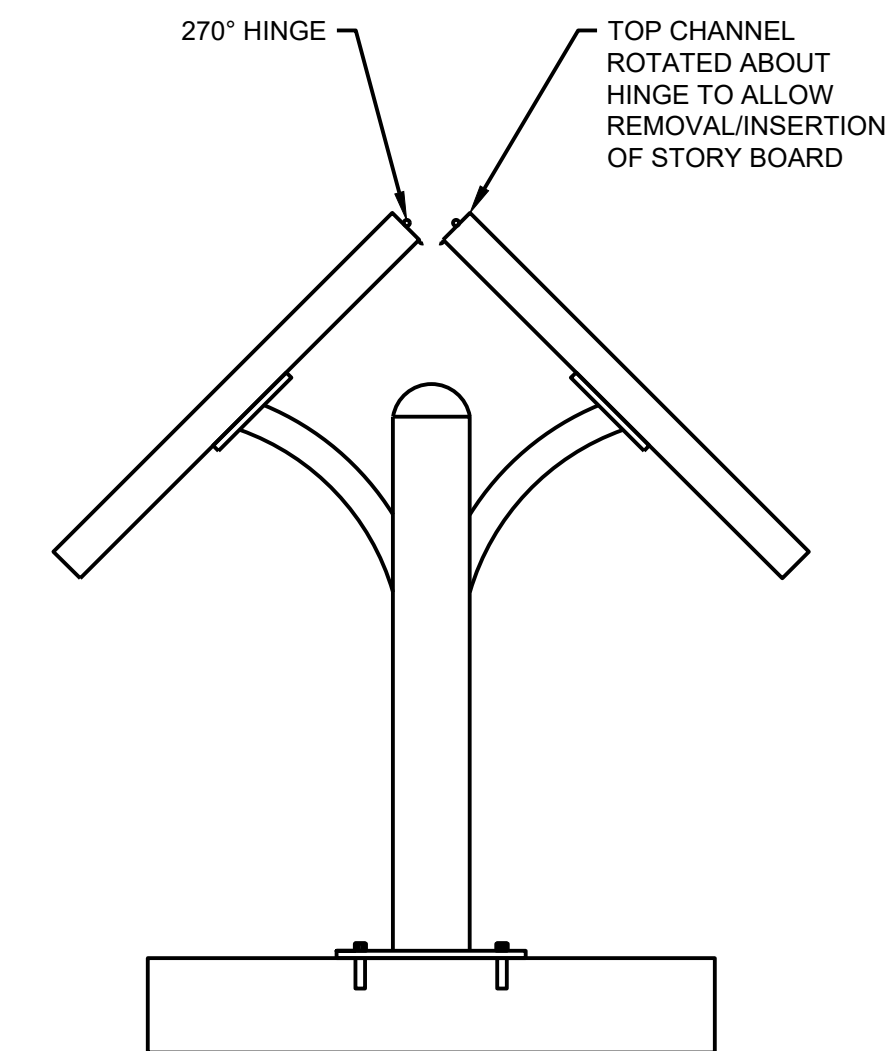
ELEVATION 1:10
FRONT ELEVATION - CLOSED



ELEVATION 1:10
FRONT ELEVATION - OPEN



ELEVATION 1:10
SIDE ELEVATION - CLOSED



ELEVATION 1:10
SIDE ELEVATION - OPEN

NO.	REVISION	DATE	INIT.
0	ISSUED FOR QUOTATIONS	27/05/2022	K.V.H.

DRAFTING	K.V.H.
DESIGN	M.W.
CHECKED BY	P.B.
APPROVED BY	M.B.



CITY OF NIAGARA FALLS
MILLENNIUM TRAIL STORY BOARD SIGN
STRUCTURAL

CAD No.	2021-5558
DATE	2022-05-27
SCALE	AS SHOWN
REF. No.	
DWG No.	5558-00-S-300
REV.	0