

SCHEDULE OF DRAWINGS & SPECIFICATIONS

I N D E X

| | DESCRIPTION | PAGE |
|----|---|---------------|
| 1. | CONTRACT DRAWINGS..... | SD - 1 |
| 2. | CITY OF NIAGARA FALLS STANDARD DRAWINGS | SD - 2 |
| 3. | ONTARIO PROVINCIAL STANDARD DRAWINGS (OPSDS) | SD - 2 |
| 4. | ONTARIO PROVINCIAL STANDARD SPECIFICATIONS (OPSSS) | SD - 3 |

SCHEDULE OF DRAWINGS & SPECIFICATIONS

1. CONTRACT DRAWINGS

| Description | Dwg. No. |
|-------------------------------------|-----------------|
| COVER | - |
| INDEX, NOTES AND LEGEND | CC-5300R4 |
| MULTI USE PATHWAY ALIGNMENTS | CC-9153 |
| WHIRLPOOL ROAD ALIGNMENTS – SHEET 1 | CC-9154 |
| WHIRLPOOL ROAD ALIGNMENTS – SHEET 2 | CC-9155 |
| WHIRLPOOL ROAD ALIGNMENTS – SHEET 3 | CC-9156 |
| REMOVALS – SHEET 1 | RM-01 |
| REMOVALS – SHEET 2 | RM-02 |
| REMOVALS – SHEET 3 | RM-03 |
| REMOVALS – SHEET 4 | RM-04 |
| REMOVALS – SHEET 5 | RM-05 |
| PROPOSED PLAN AND PROFILE – SHEET 1 | CC-9157 |
| PROPOSED PLAN AND PROFILE – SHEET 2 | CC-9158 |
| PROPOSED PLANS – SHEET 1 | CC-9159 |
| PROPOSED PLANS – SHEET 2 | CC-9160 |
| PROPOSED PLANS – SHEET 3 | CC-9161 |
| PROPOSED PLANS – SHEET 4 | CC-9162 |
| STREET LIGHTING – DRAWING 1 | CC-9163 |
| PAVEMENT MARKINGS – SHEET 1 | PM-01 |
| PAVEMENT MARKINGS – SHEET 2 | PM-02 |
| PAVEMENT MARKINGS – SHEET 3 | PM-03 |
| PAVEMENT MARKINGS – SHEET 4 | PM-04 |
| TYPICAL SECTIONS | CC-9164 |
| DETAIL SHEET 1 | DT-01 |

City of Niagara Falls
Contract 2020-396-16

Whirlpool Road Multi-Use Pathway, Pedestrian Bridge, and Roadway Widening
Construction from Millennium Trail to Victoria Avenue

| | |
|-------------------------|---------|
| DETAIL SHEET 2 | DT-02 |
| DETAIL SHEET 3 | DT-03 |
| GENERAL ARRANGEMENT | CC-9165 |
| FOUNDATIONS | CC-9166 |
| STEEL TRUSS | CC-9167 |
| STEEL TRUSS DETAILS | DT-04 |
| MISCELLANEOUS DETAILS 1 | MDT-01 |
| MISCELLANEOUS DETAILS 2 | MDT-02 |
| PILE DRIVING CONTROL | MDT-03 |

2. CITY OF NIAGARA FALLS STANDARD DRAWINGS

The following standard drawings may be found at the end of this section.

| Description | Dwg. No. |
|---|----------|
| Contract Sign | NFS-A04 |
| Concrete Curb Restoration (CB and C&G Detail) | NFS-B03 |

3. ONTARIO PROVINCIAL STANDARD DRAWINGS (OPSDs)

Contractors are advised that the City of Niagara Falls has adopted the Ontario Provincial Standard Drawings.

Copies of the relevant drawings **ARE NOT** included in this Contract; therefore, it is necessary for Contractors to obtain their own set of current Ontario Provincial Standard Drawings (OPSDs).

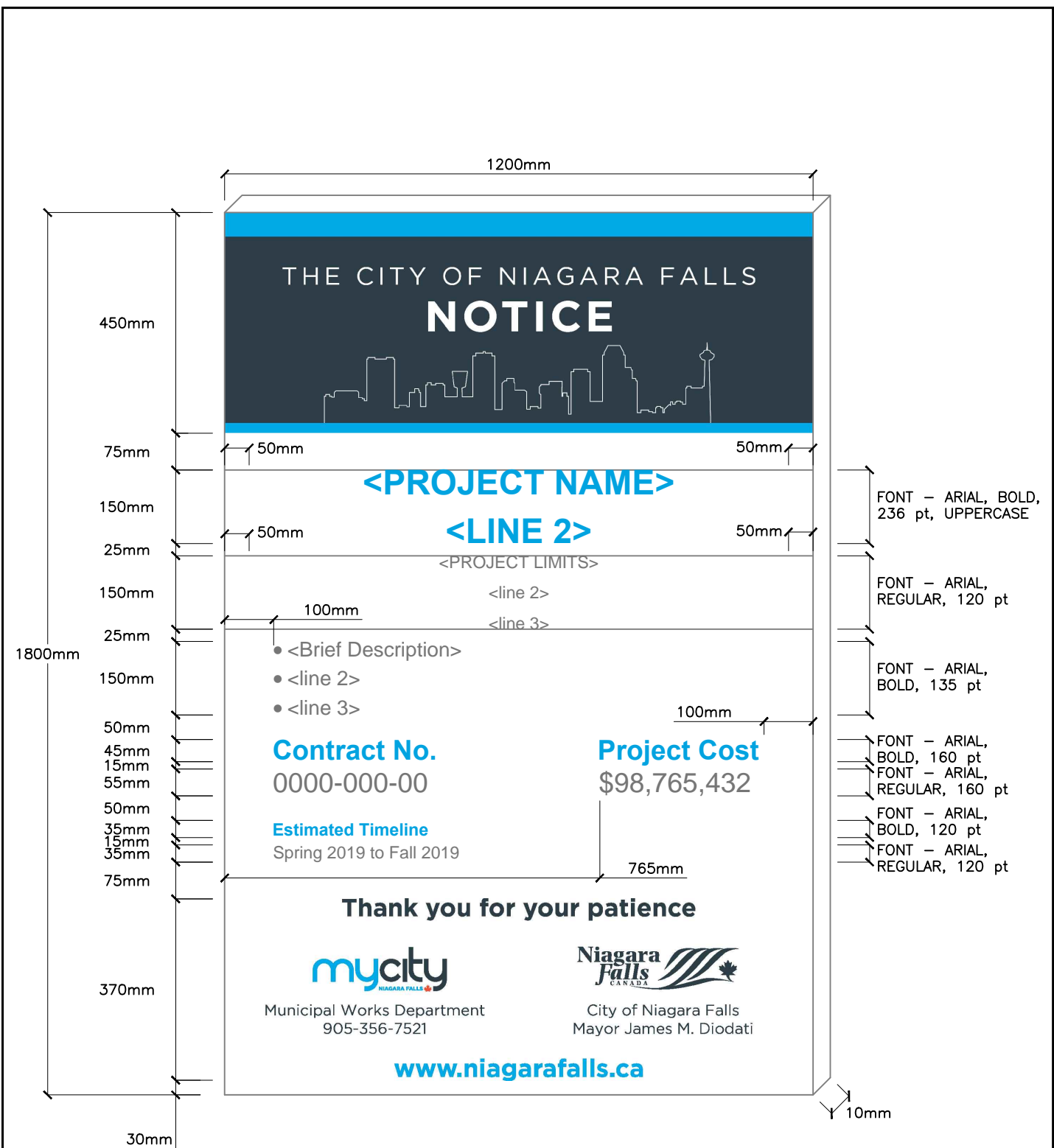
Applicable OPSDs shall be referenced on the contract drawings and within the contract specifications.

4. ONTARIO PROVINCIAL STANDARD SPECIFICATIONS (OPSSs)

Contractors are advised that the City of Niagara Falls has adopted the Ontario Provincial Standard Specifications.

Copies of the relevant specifications **ARE NOT** included in this Contract; therefore, it is necessary for Contractors to obtain their own set of current Ontario Provincial Standard Specifications (OPSSs).

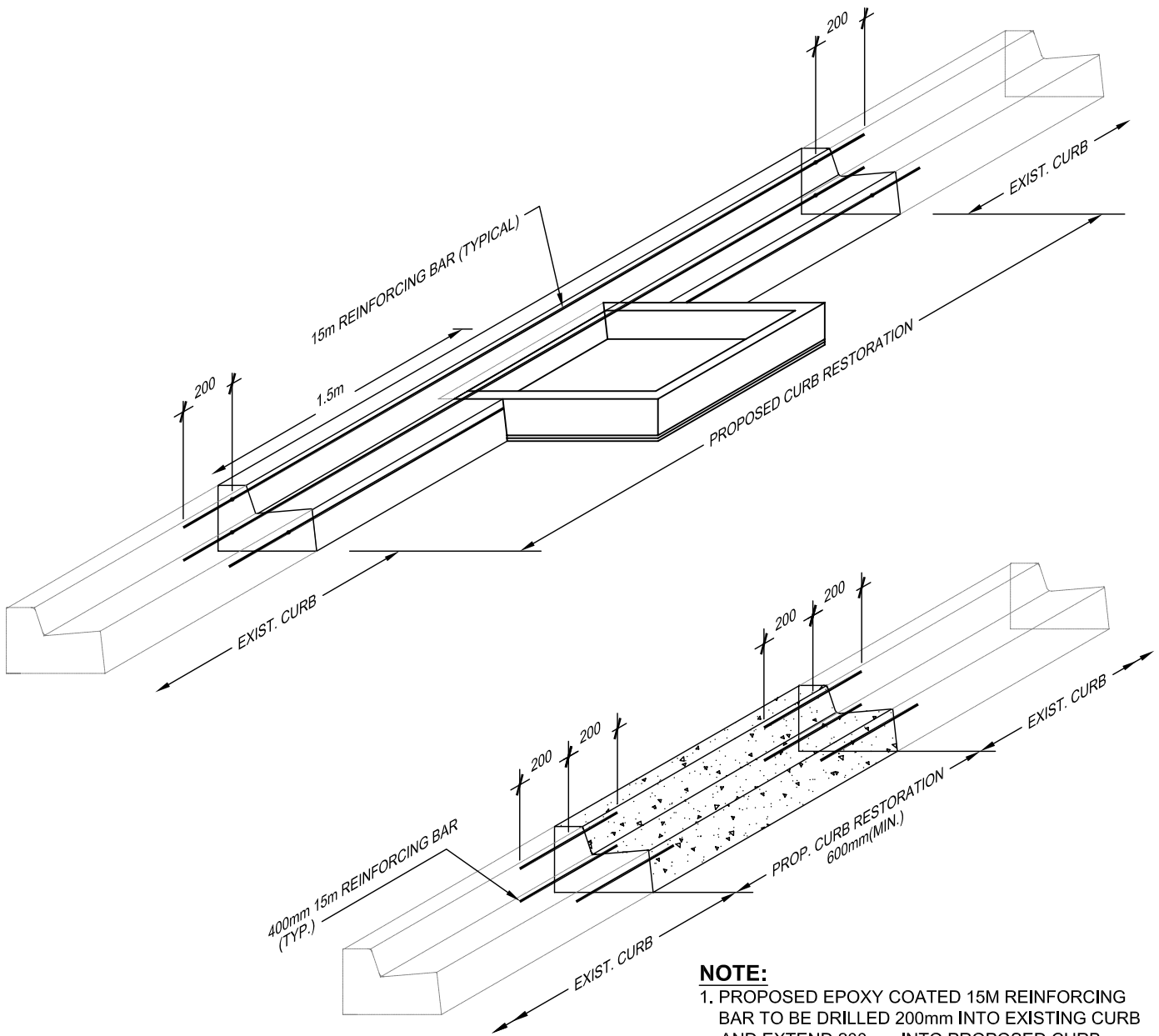
Applicable OPSSs shall be referenced on the contract drawings and within the contract specifications.



NOTES:

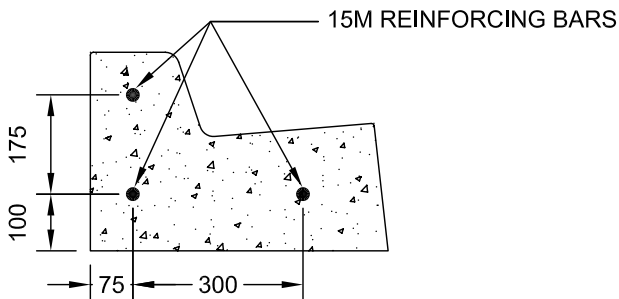
1. REFER TO CITY OF NIAGARA FALLS STANDARD DRAWING NFS-A03 FOR CONTRACT SIGN FRAME DETAILS.
2. PROJECT NAME, CONTRACT No., PROJECT COST, ESTIMATED TIMELINE, mycity LOGO AND URL SHALL BE BLUE COLOUR cmyk 86/8/0/0 (PMS 299C)
3. ALL OTHER TEXT, LOGOS, GRAPHIC ELEMENTS SHALL BE GREY COLOUR cmyk 25/0/0/88

| | | |
|--|----------------------------|------------------|
| CITY OF NIAGARA FALLS MUNICIPAL WORKS | SCALE N.T.S. | |
| | DATE MAY 2019 | |
| | DWG. NO. NFS-A04 | REV. 0 |
| CONTRACT SIGN | | |

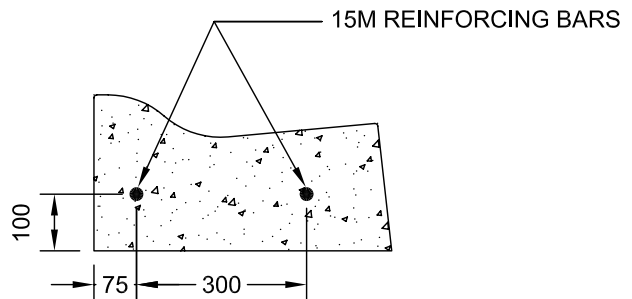


NOTE:
 1. PROPOSED EPOXY COATED 15M REINFORCING BAR TO BE DRILLED 200mm INTO EXISTING CURB AND EXTEND 200mm INTO PROPOSED CURB.
 2. DIMENSIONS IN mm UNLESS NOTED OTHERWISE.

CONCRETE BARRIER CURB



CONCRETE SEMI-MOUNTABLE CURB



CITY OF NIAGARA FALLS
 MUNICIPAL WORKS

CONCRETE CURB RESTORATION
 CATCHBASIN AND CURB & GUTTER DETAIL

SCALE N.T.S.

DATE APRIL 2008

DWG. NO.

NFS-B03

REV.

0