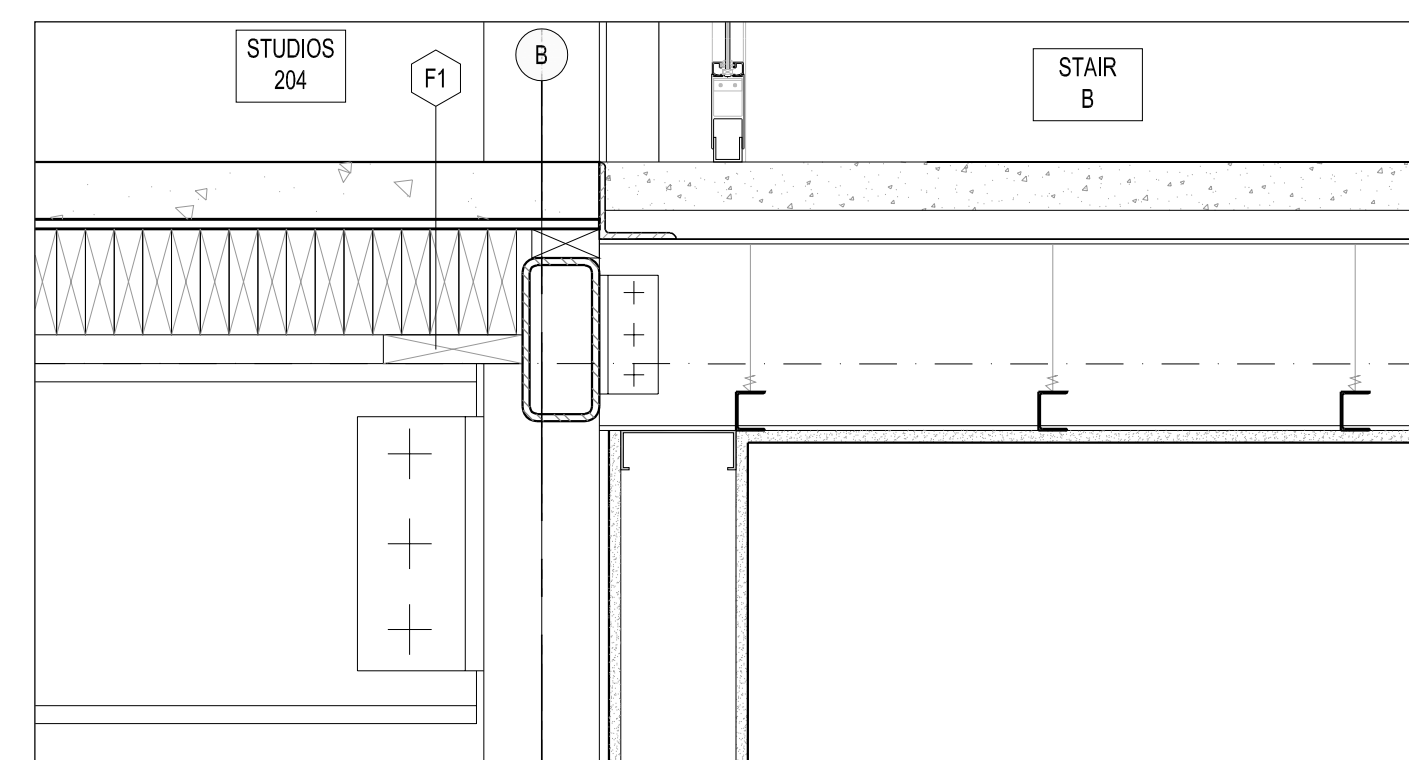
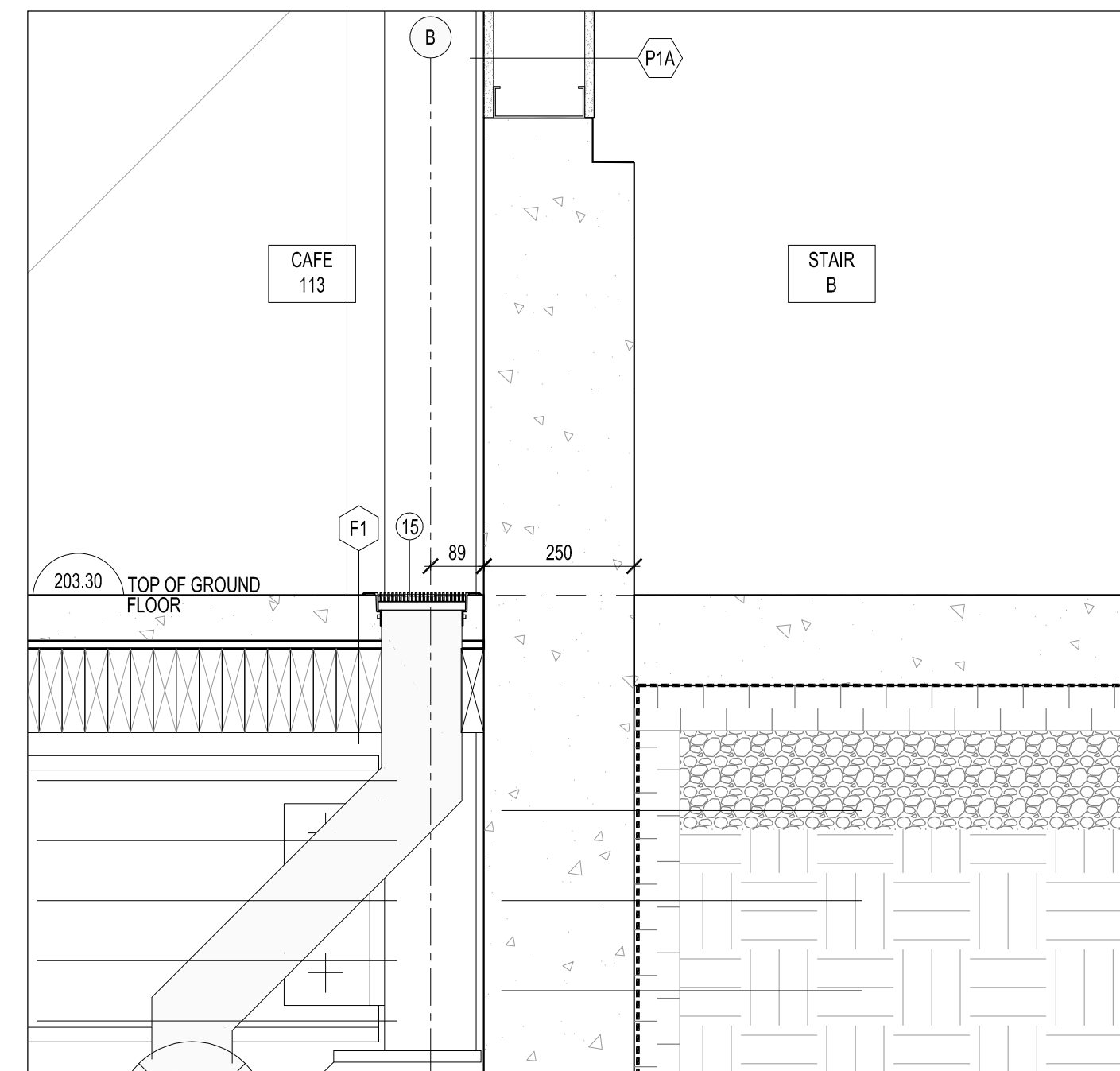


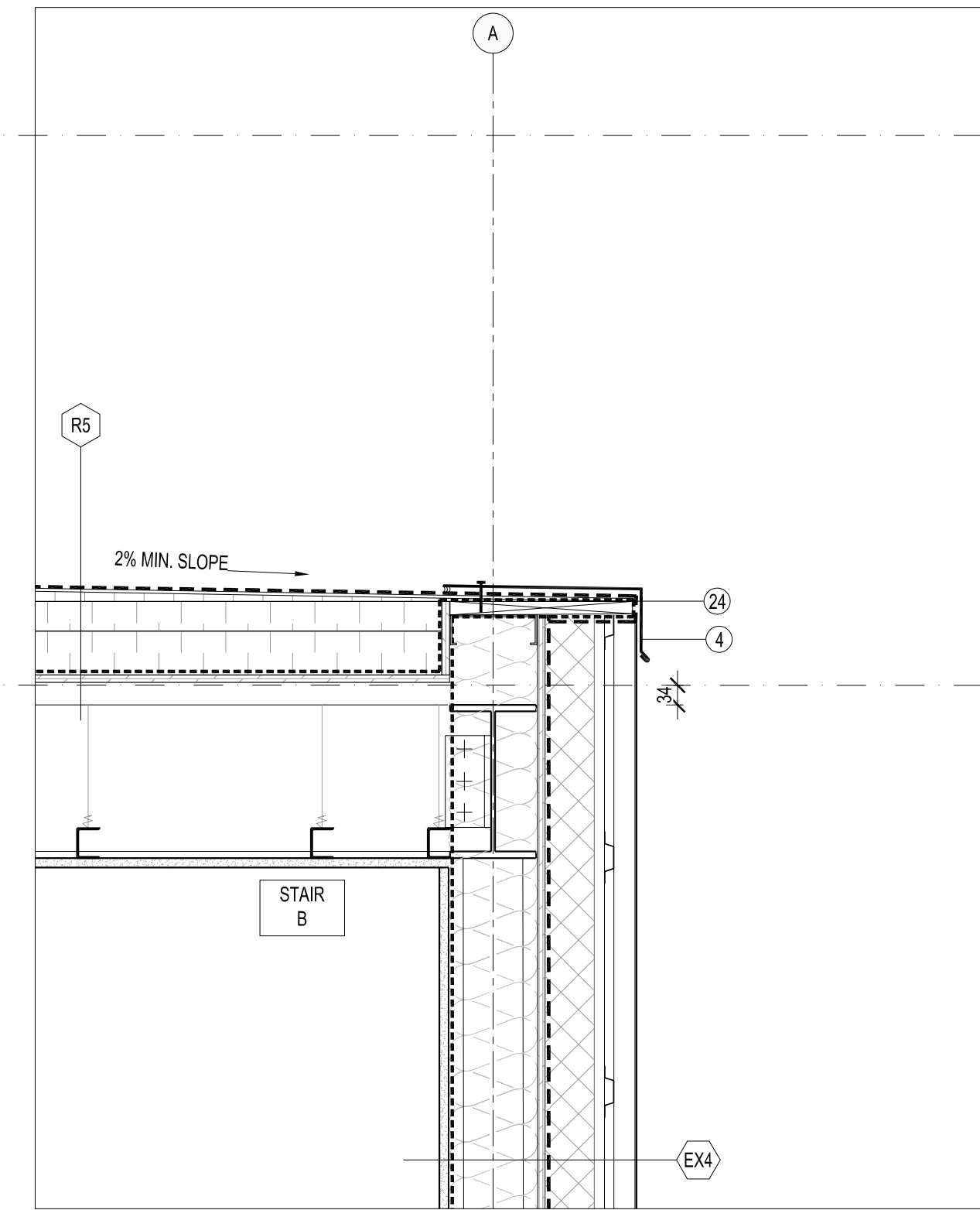
9 DETAIL SECTION THROUGH STUDIO BUILDING  
A602 1:10



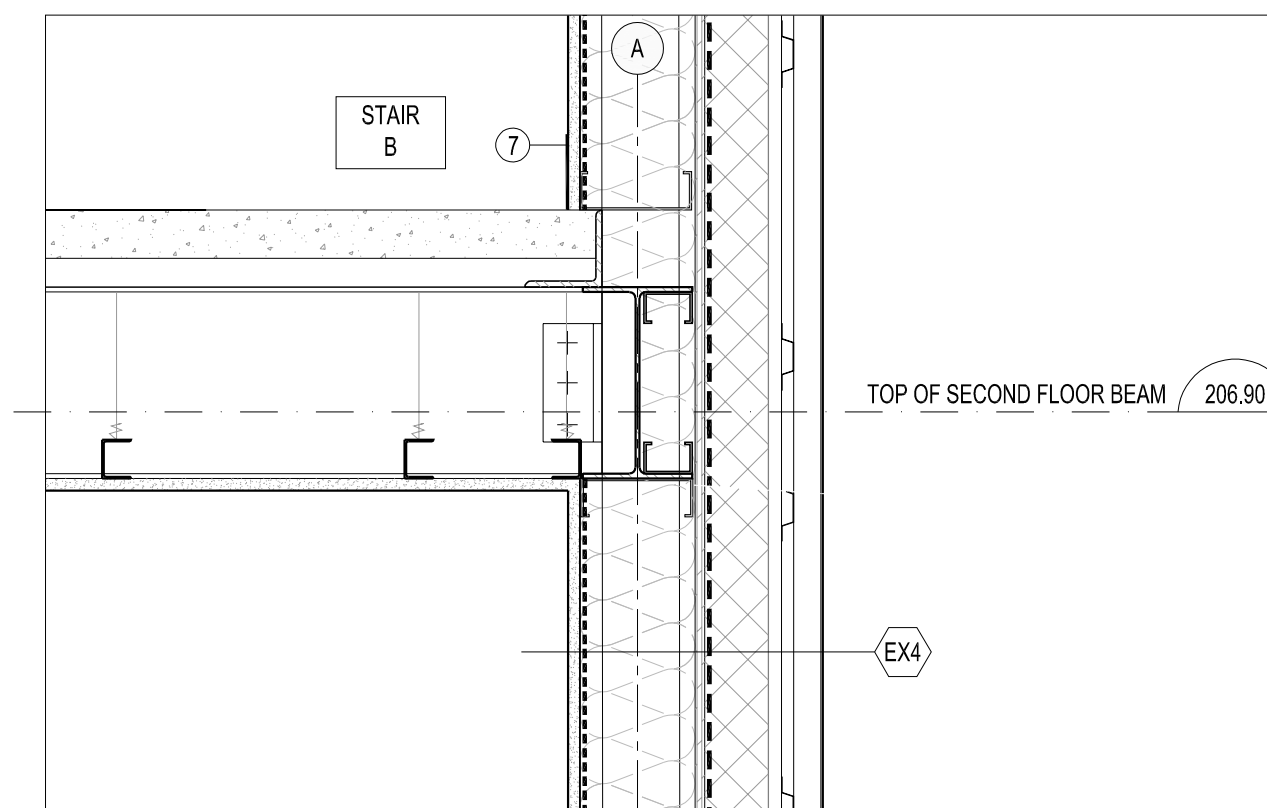
8 DETAIL SECTION THROUGH STUDIO BUILDING  
A602 1:10



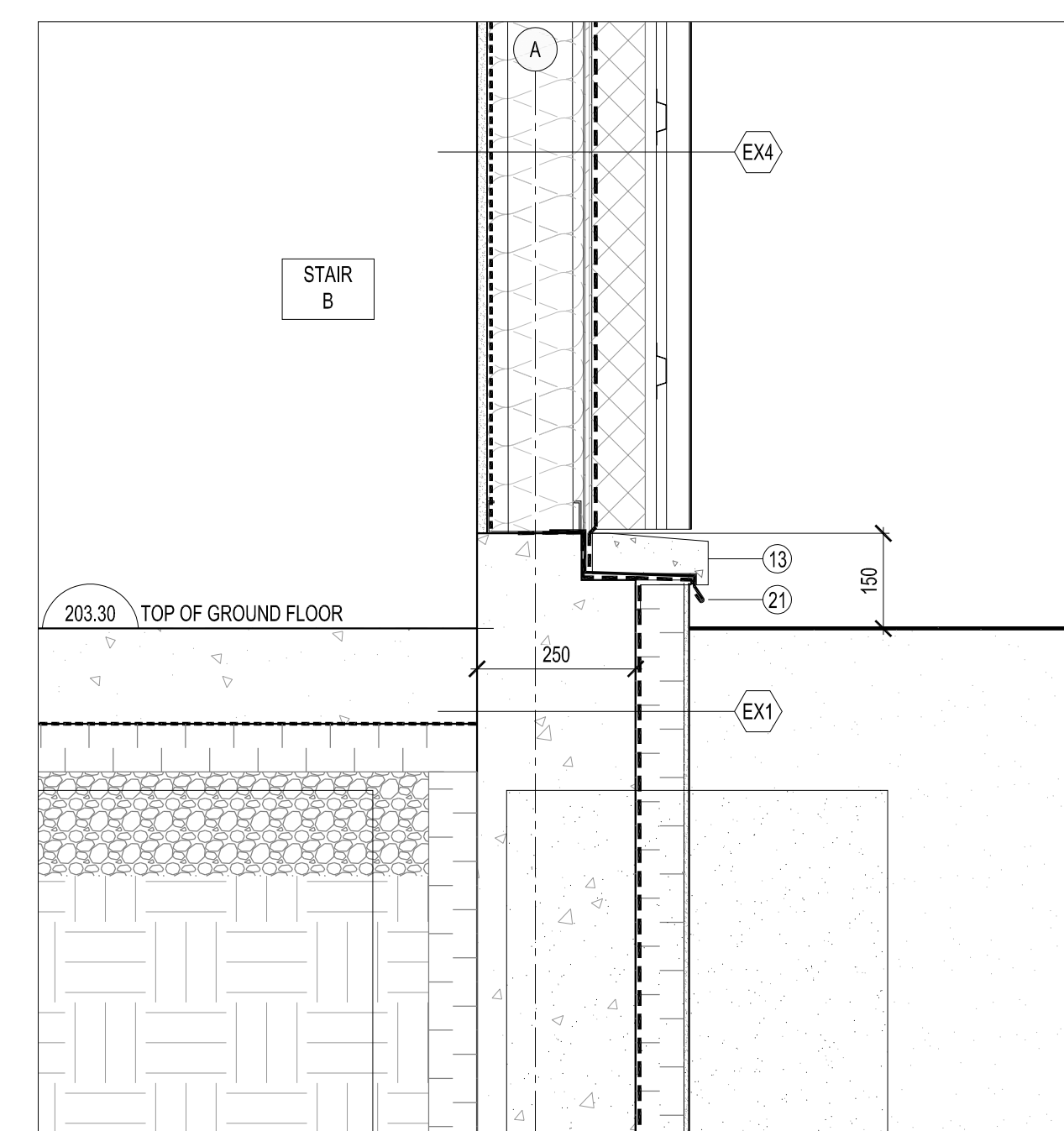
7 DETAIL SECTION THROUGH STUDIO BUILDING  
A602 1:10



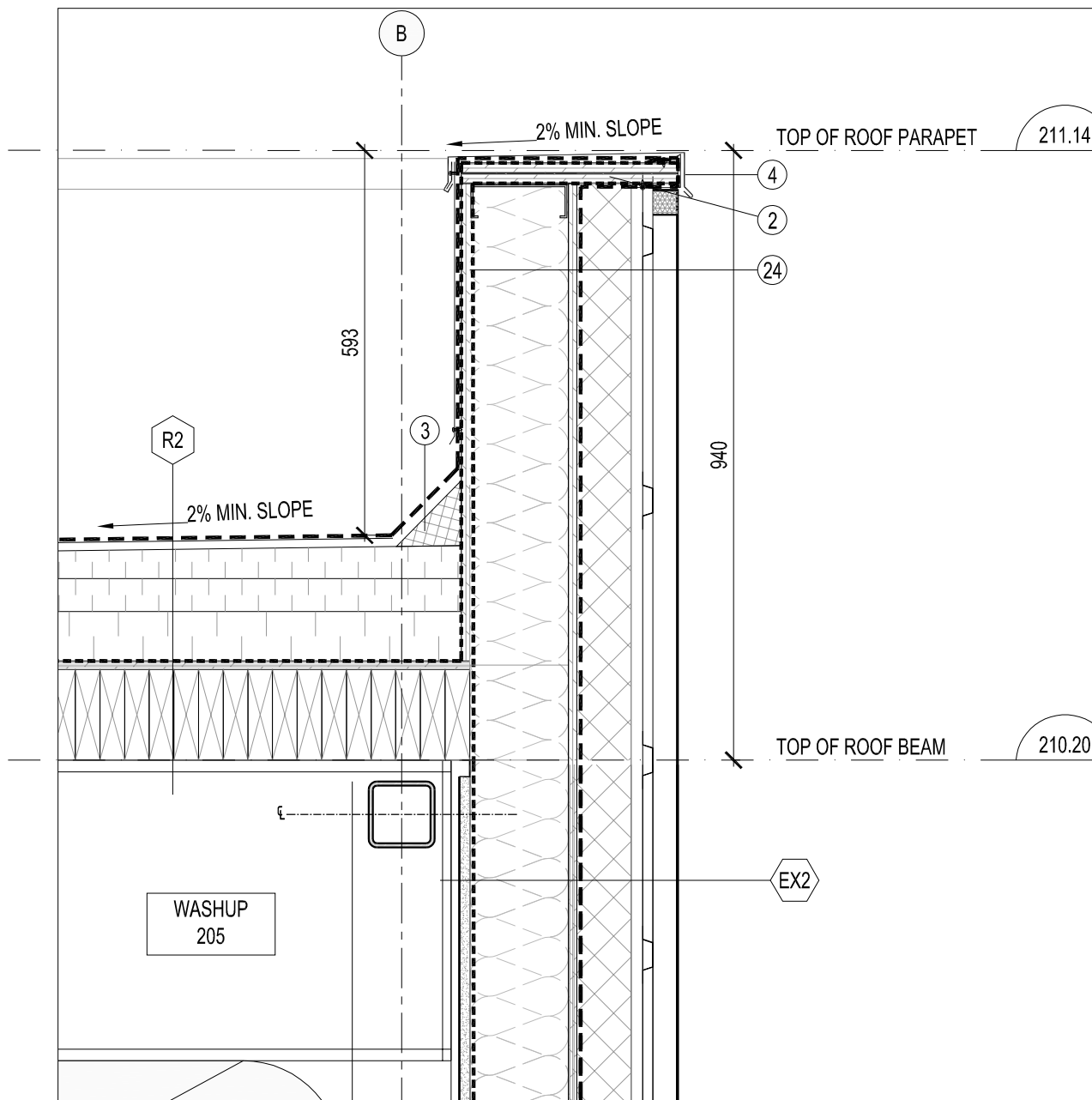
6 DETAIL SECTION THROUGH STUDIO BUILDING  
A602 1:10



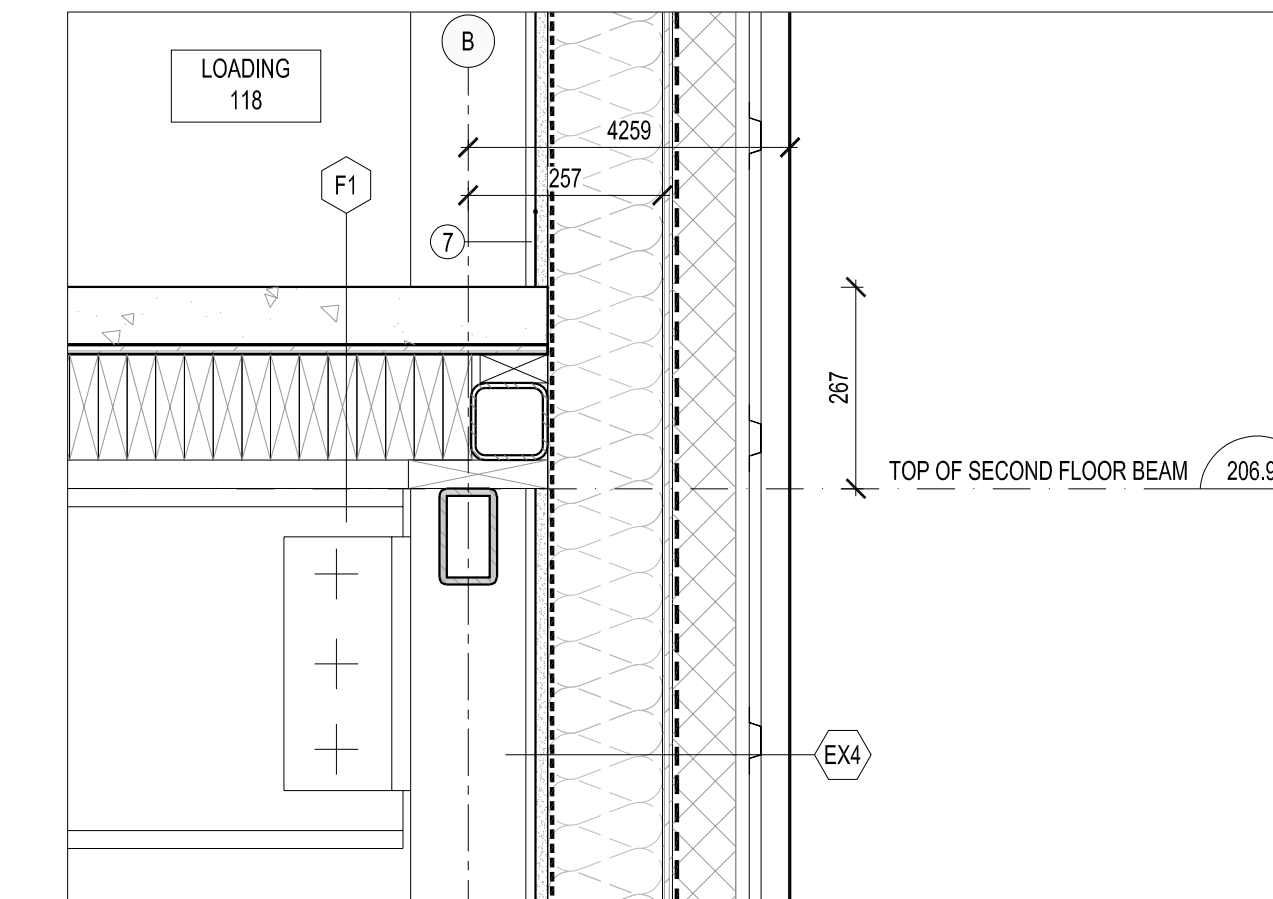
5 DETAIL SECTION THROUGH STUDIO BUILDING  
A602 1:10



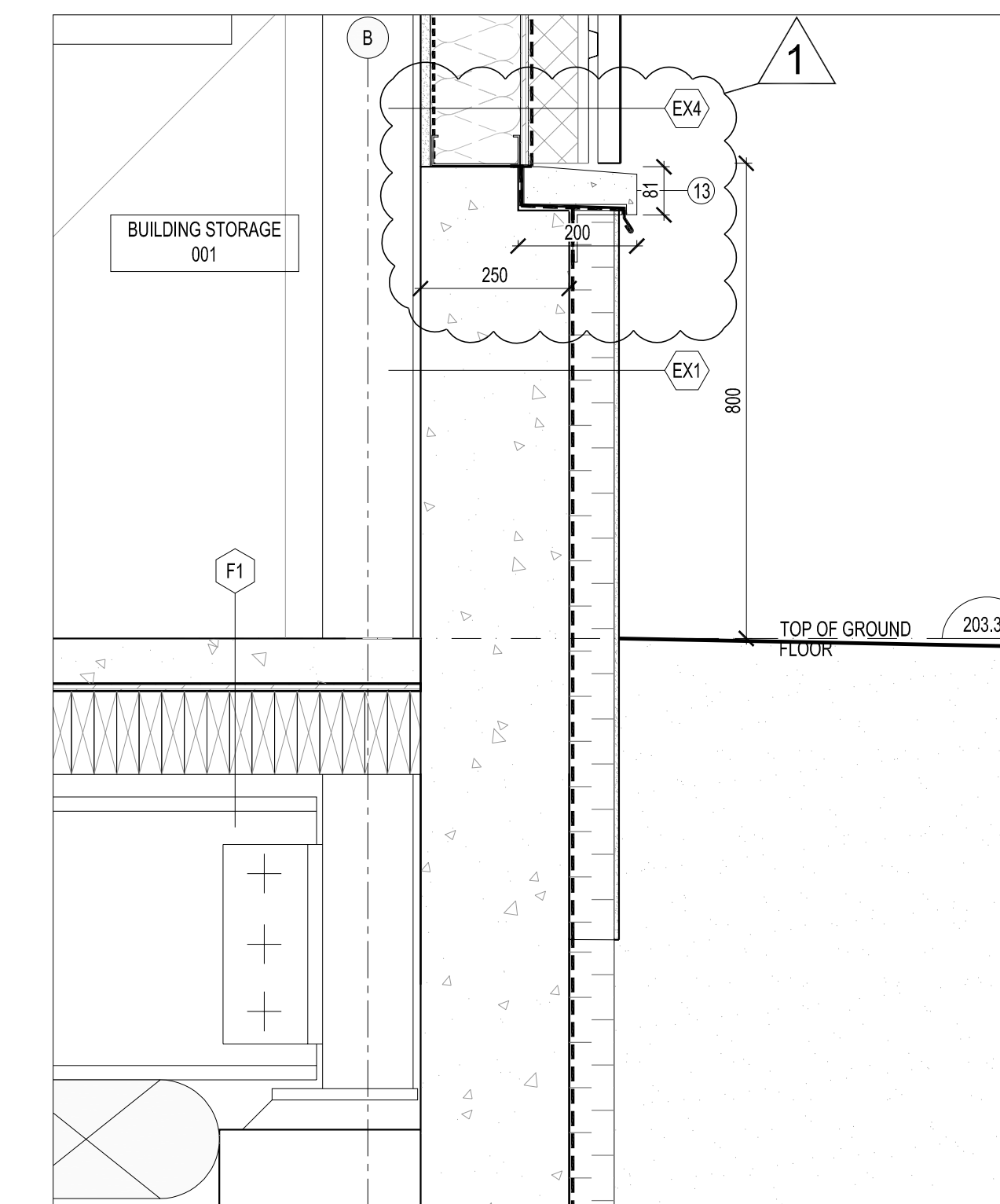
4 DETAIL SECTION THROUGH STUDIO BUILDING  
A602 1:10



3 DETAIL SECTION THROUGH STUDIO BUILDING  
A602 1:10



2 DETAIL SECTION THROUGH STUDIO BUILDING  
A602 1:10



1 DETAIL SECTION THROUGH STUDIO BUILDING  
A602 1:10

- LEGEND:
- 1 SEALANT AND BACKER ROD
  - 2 BLOCKING
  - 3 CONTINUOUS FIBRE CANT STRIP
  - 4 PREFINISHED METAL PARAPET FLASHING CW DRIP EDGE AND STARTER CLEAT
  - 5 PREFINISHED METAL FLASHING CW GRAVEL STOP
  - 6 PHOTOVOLTAIC PANELS MOUNTED ONTO S-SI CLIPS
  - 7 STAINLESS STEEL WALL BASE
  - 8 ROOF DRAIN AND RAINWATER LEADER
  - 9 CONCRETE FOUNDATION WALL, SANDBLASTED FINISH AT EXPOSED AREAS
  - 10 ALUMINUM CAP, SILL EXTRUSION, JAMB EXTRUSION OR CLOSURE PIECE TO MATCH WINDOW FRAME
  - 11 PREFINISHED METAL FASCIA PROFILE
  - 12 AIR/VAPOUR BARRIER, LAP AND SEAL AT JAMBS, TYP.
  - 13 PRECAST SILL ON STEEL ANGLE
  - 14 SOLID SURFACING WINDOW SILL
  - 15 PREFINISHED METAL DIFFUSER GRILLE, SEE MECH.
  - 16 GYPSUM WALL BOARD REVEAL
  - 17 PERFORATED ALUMINUM STRIP VENT
  - 18 FOOT GRILLE
  - 19 RESERVED
  - 20 PREFABRICATED CURB FOR ROOFTOP MECHANICAL ENCLOSURE
  - 21 THRU-WALL FLASHING
  - 22 HEAD FLASHING
  - 23 PREFINISHED METAL SILL EXTRUSION, JAMB EXTRUSION OR CLOSURE PIECE TO MATCH METAL WALL CLADDING
  - 24 LAP AND SEAL, WATERPROOF MEMBRANE OVER PARAPET AND THE INTO WALL AIR BARRIER SYSTEM AND/OR WINDOW FRAME
  - 25 ROLLER BLIND
  - 26 TAPER INSULATION TO FILL CAVITY AND PROVIDE SLOPE TO DRAIN
  - 27 HANDRAIL
  - 28 CORNER GUARD
  - 29 ALUMINUM SCUPPER

NO.	DATE	DESCRIPTION
3	2020-02-28	ADDENDUM #1
2	2020-02-06	ISSUED FOR TENDER
1	2019-08-23	CLASS A COSTING

ISSUE RECORD

THE CONTRACTOR SHALL VERIFY AND BE RESPONSIBLE FOR ALL DIMENSIONS AND CONDITIONS ON THE JOB SITE AND SHALL INFORM THE ARCHITECTS IMMEDIATELY OF ANY DISCREPANCY OR VARIATION FROM THE DRAWINGS. DO NOT SCALE THE DRAWINGS.

DRAWINGS ARE NOT TO BE USED FOR CONSTRUCTION UNTIL SIGNED BY THE ARCHITECT.

ALL DRAWINGS, SPECIFICATIONS AND RELATED DOCUMENTS ARE THE COPYRIGHT PROPERTY OF THE ARCHITECT AND MUST BE RETURNED UPON REQUEST. REPRODUCTION OF DRAWINGS, SPECIFICATIONS AND RELATED DOCUMENTS IN PART OR IN WHOLE IS FORBIDDEN WITHOUT WRITTEN PERMISSION.

DTAH Architects Limited  
50 Park Road  
Toronto, Ontario  
M4W 2N5  
T 416 968 7908  
F 416 968 0687  
www.dtah.com

**NIAGARA FALLS EXCHANGE**  
5943 SYLVIA PLACE  
NIAGARA FALLS, ONTARIO | L2G 1S9

DRAWING TITLE:  
STUDIO BUILDING SECTIONS

PRINT DATE: 2020-02-28  
SCALE: 1:10  
PROJECT NO. 17-034  
DRAWN BY: NP/JB/EC  
CHECKED BY: MT

**A602**

10 RESERVED  
A602 1:10