

# **SCHEDULE OF DRAWINGS & SPECIFICATIONS**

**SCHEDULE OF DRAWINGS & SPECIFICATIONS**

**I N D E X**

|    | <b>DESCRIPTION</b>   | <b>PAGE</b>   |
|----|--|---------------|
| 1. | <b>CONTRACT DRAWINGS.....</b>                                  | <b>SD - 1</b> |
| 2. | <b>CITY OF NIAGARA FALLS STANDARD DRAWINGS .....</b>           | <b>SD - 1</b> |
| 3. | <b>ONTARIO PROVINCIAL STANDARD DRAWINGS (OPSDs).....</b>       | <b>SD - 1</b> |
| 4. | <b>ONTARIO PROVINCIAL STANDARD SPECIFICATIONS (OPSSs).....</b> | <b>SD - 2</b> |

## SCHEDULE OF DRAWINGS & SPECIFICATIONS

### 1. CONTRACT DRAWINGS

| Description   | Dwg. No. |
|---|----------|
| Cover Page  | -        |
| General Information Legend  | CC-5300  |
| Cooper Drive - Dorchester Rd to 20m E of Jordan Ave - Sta. 0+000 to Sta. 0+140            | CC-8674  |
| Cooper Drive - 20m E of Jordan Ave to 20m E of Marieclaude Ave - Sta. 0+140 to Sta. 0+240 | CC-8675  |
| Cooper Drive - 20m E of Marieclaude Ave to Fern Ave - Sta. 0+240 to Sta. 0+314            | CC-8676  |
| Jill Drive - Dorchester Rd to 20m E of Jordan Ave - Sta. 0+000 to Sta. 0+140              | CC-8677  |
| Jill Drive - 20m E of Jordan Ave to 20m E of Marieclaude Ave - Sta. 0+140 to Sta. 0+240   | CC-8678  |
| Jill Drive - 20m E of Marieclaude Ave to Fern Ave - Sta. 0+240 to Sta. 0+326              | CC-8679  |
| Jordan Avenue - Jill Dr to 25m N of Jill Dr & Cooper Dr to 40m S of Cooper Dr             | CC-8680  |
| Marieclaude Avenue - Jill Dr to 30m N of Jill Dr & Cooper Dr to 30m S of Cooper Dr        | CC-8681  |

### 2. CITY OF NIAGARA FALLS STANDARD DRAWINGS

The following standard drawings may be found at the end of this section.

| Description   | Dwg. No. |
|---|----------|
| Contract Sign   | NFS-A01  |
| Concrete Curb Restoration (Catchbasin and Curb & Gutter Detail) | NFS-B03  |

### 3. ONTARIO PROVINCIAL STANDARD DRAWINGS (OPSDs)

Contractors are advised that the City of Niagara Falls has adopted the Ontario Provincial Standard Drawings.

Copies of the relevant drawings **ARE NOT** included in this Contract; therefore, it is necessary for Contractors to obtain their own set of current Ontario Provincial Standard Drawings (OPSDs).

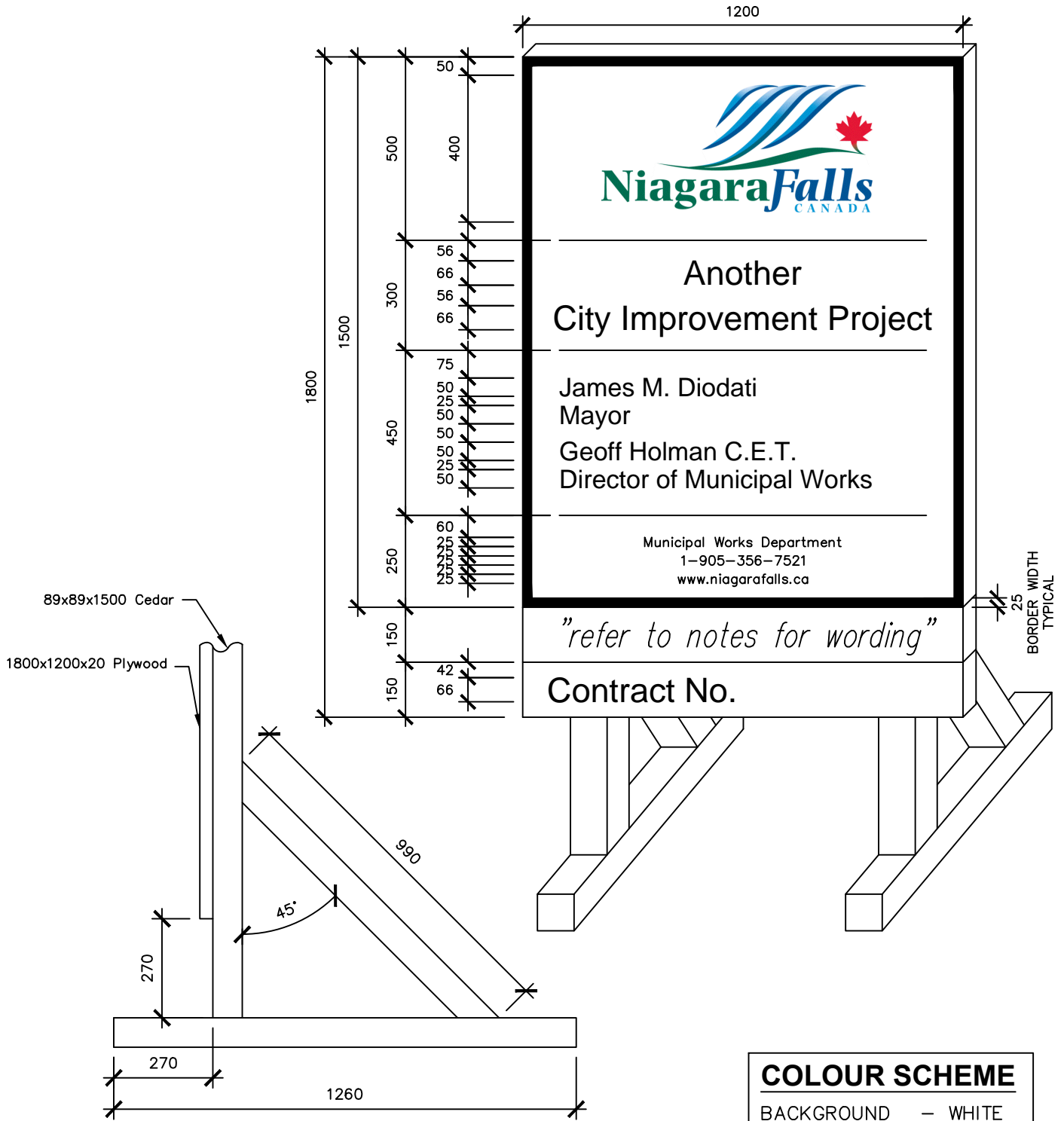
Applicable OPSDs shall be referenced on the contract drawings and within the contract specifications.

**4. ONTARIO PROVINCIAL STANDARD SPECIFICATIONS (OPSSs)**

Contractors are advised that the City of Niagara Falls has adopted the Ontario Provincial Standard Specifications.

Copies of the relevant specifications **ARE NOT** included in this Contract; therefore, it is necessary for Contractors to obtain their own set of current Ontario Provincial Standard Specifications (OPSSs).

Applicable OPSSs shall be referenced on the contract drawings and within the contract specifications.

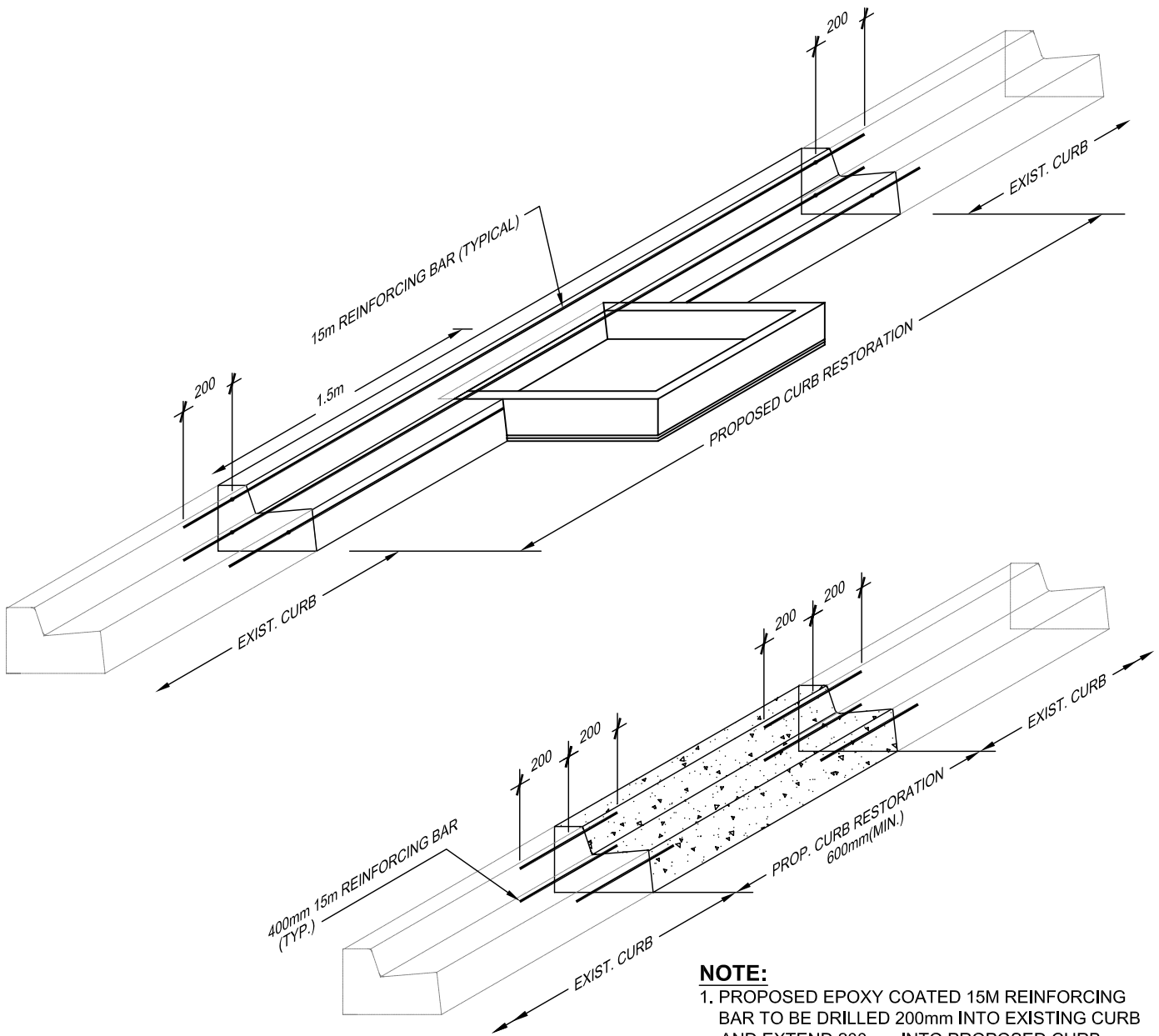


**NOTE**

For Road Construction projects change this line to "Road Improvements"  
 For Watermain Construction projects change this line to "Watermain Construction"  
 For Sewer Construction projects change this line to "Sewer Construction"  
 For Sidewalk Construction projects change this line to "Sidewalk Construction"

| COLOUR SCHEME |          |
|---------------|----------|
| BACKGROUND    | — WHITE  |
| LETTERING     | — BLUE   |
| LOGO          | — BLUE   |
|               | — GREEN  |
|               | — RED    |
| STAND         | — BLUE   |
| BORDER        | — ORANGE |

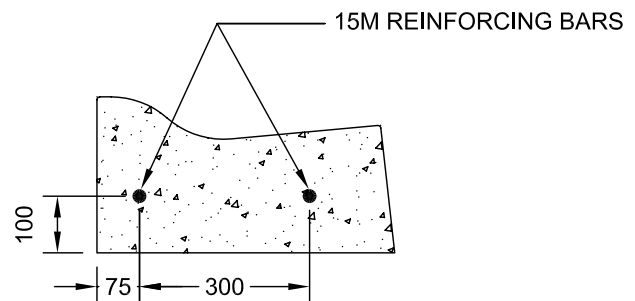
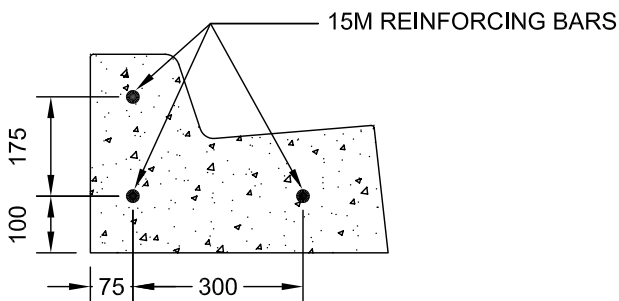
|  |               |      |
|--|---------------|------|
| <p>CITY OF NIAGARA FALLS<br/>MUNICIPAL WORKS</p> | SCALE N.T.S.  |      |
|  | DATE MAY 2015 |      |
| <p>CONTRACT SIGN</p>                             | DWG. NO.      | REV. |
|  | NFS-A01       | 0    |



**NOTE:**  
 1. PROPOSED EPOXY COATED 15M REINFORCING BAR TO BE DRILLED 200mm INTO EXISTING CURB AND EXTEND 200mm INTO PROPOSED CURB.  
 2. DIMENSIONS IN mm UNLESS NOTED OTHERWISE.

**CONCRETE BARRIER CURB**

**CONCRETE SEMI-MOUNTABLE CURB**



**CITY OF NIAGARA FALLS**  
 MUNICIPAL WORKS

**CONCRETE CURB RESTORATION**  
 CATCHBASIN AND CURB & GUTTER DETAIL

SCALE N.T.S.

DATE APRIL 2008

DWG. NO.

**NFS-B03**

REV.

**0**