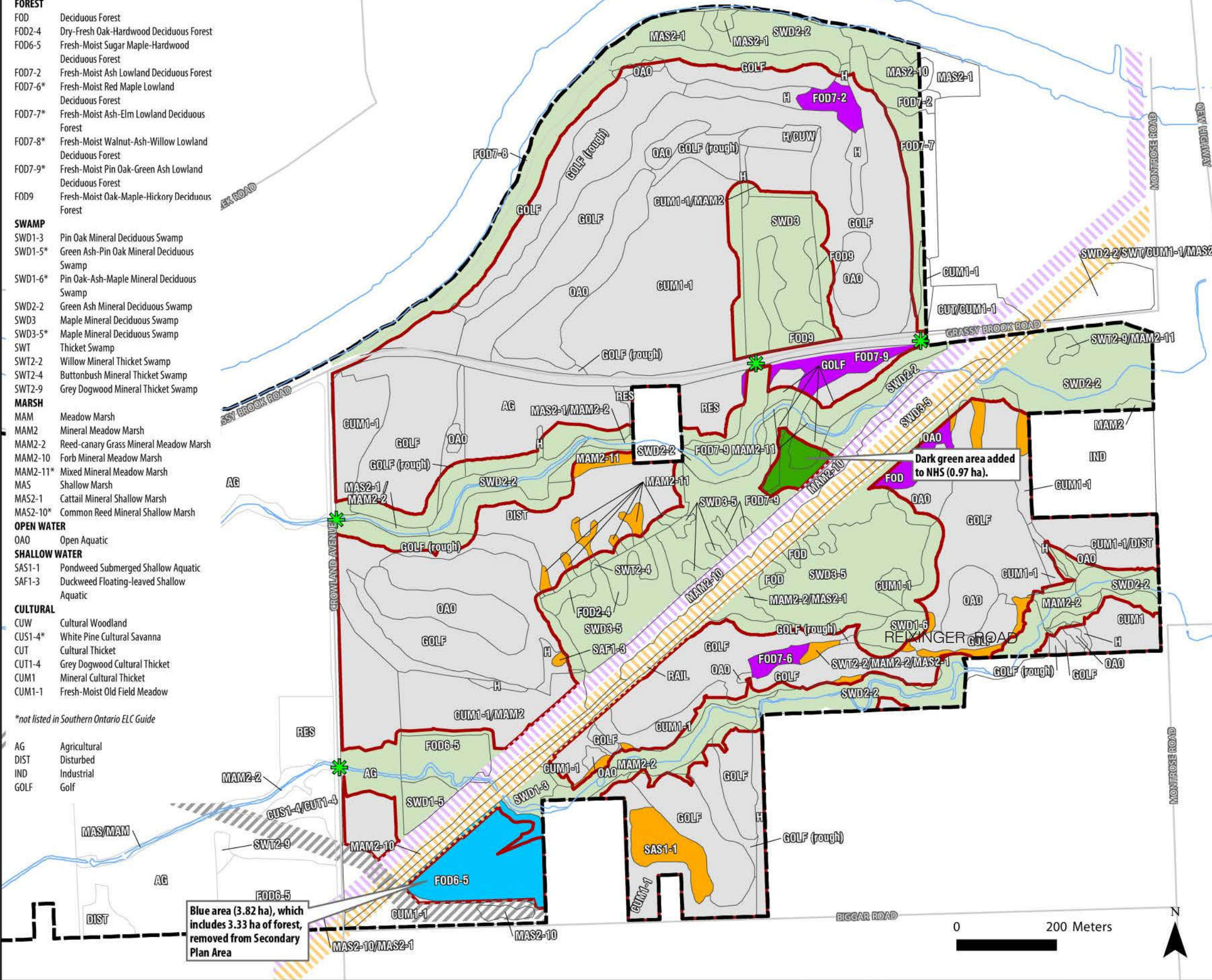


Appendix IX-C to the Official Plan Defined Natural Heritage System

GRAND NIAGARA SECONDARY PLAN

- ELC Legend**
- FOREST**
- FOD Deciduous Forest
 - FOD2-4 Dry-Fresh Oak-Hardwood Deciduous Forest
 - FOD6-5 Fresh-Moist Sugar Maple-Hardwood Deciduous Forest
 - FOD7-2 Fresh-Moist Ash Lowland Deciduous Forest
 - FOD7-6* Fresh-Moist Red Maple Lowland Deciduous Forest
 - FOD7-7* Fresh-Moist Ash-Elm Lowland Deciduous Forest
 - FOD7-8* Fresh-Moist Walnut-Ash-Willow Lowland Deciduous Forest
 - FOD7-9* Fresh-Moist Pin Oak-Green Ash Lowland Deciduous Forest
 - FOD9 Fresh-Moist Oak-Maple-Hickory Deciduous Forest
- SWAMP**
- SWD1-3 Pin Oak Mineral Deciduous Swamp
 - SWD1-5* Green Ash-Pin Oak Mineral Deciduous Swamp
 - SWD1-6* Pin Oak-Ash-Maple Mineral Deciduous Swamp
 - SWD2-2 Green Ash Mineral Deciduous Swamp
 - SWD3 Maple Mineral Deciduous Swamp
 - SWD3-5* Maple Mineral Deciduous Swamp
 - SWT Thicket Swamp
 - SWT2-2 Willow Mineral Thicket Swamp
 - SWT2-4 Buttonbush Mineral Thicket Swamp
 - SWT2-9 Grey Dogwood Mineral Thicket Swamp
- MARSH**
- MAM Meadow Marsh
 - MAM2 Mineral Meadow Marsh
 - MAM2-2 Reed-canary Grass Mineral Meadow Marsh
 - MAM2-10 Forb Mineral Meadow Marsh
 - MAM2-11* Mixed Mineral Meadow Marsh
 - MAS Shallow Marsh
 - MAS2-1 Cattail Mineral Shallow Marsh
 - MAS2-10* Common Reed Mineral Shallow Marsh
- OPEN WATER**
- OAO Open Aquatic
- SHALLOW WATER**
- SAS1-1 Pondweed Submerged Shallow Aquatic
 - SAF1-3 Duckweed Floating-leaved Shallow Aquatic
- CULTURAL**
- CUW Cultural Woodland
 - CUS1-4* White Pine Cultural Savanna
 - CUT Cultural Thicket
 - CUT1-4 Grey Dogwood Cultural Thicket
 - CUM1 Mineral Cultural Thicket
 - CUM1-1 Fresh-Moist Old Field Meadow
- *not listed in Southern Ontario ELC Guide*
- AG Agricultural
 - DIST Disturbed
 - IND Industrial
 - GOLF Golf

- Study Area
 - Ecological Land Classification
 - Pipeline Easement
 - Rail Line
 - Utility Corridor
 - Woodlands proposed for removal
 - Unevaluated wetlands (non-PSW) proposed for removal approved by MNRF Vineland
- Preliminary Natural Heritage System**
- Preliminary NHS (includes greater of wetland, watercourse and woodland buffers and 100 year floodline) 64.6 ha
 - Preliminary Development Area
 - Enhanced Wildlife Crossing



Note:
All provincially significant wetlands within the Study Area are retained with a 30 m buffer.