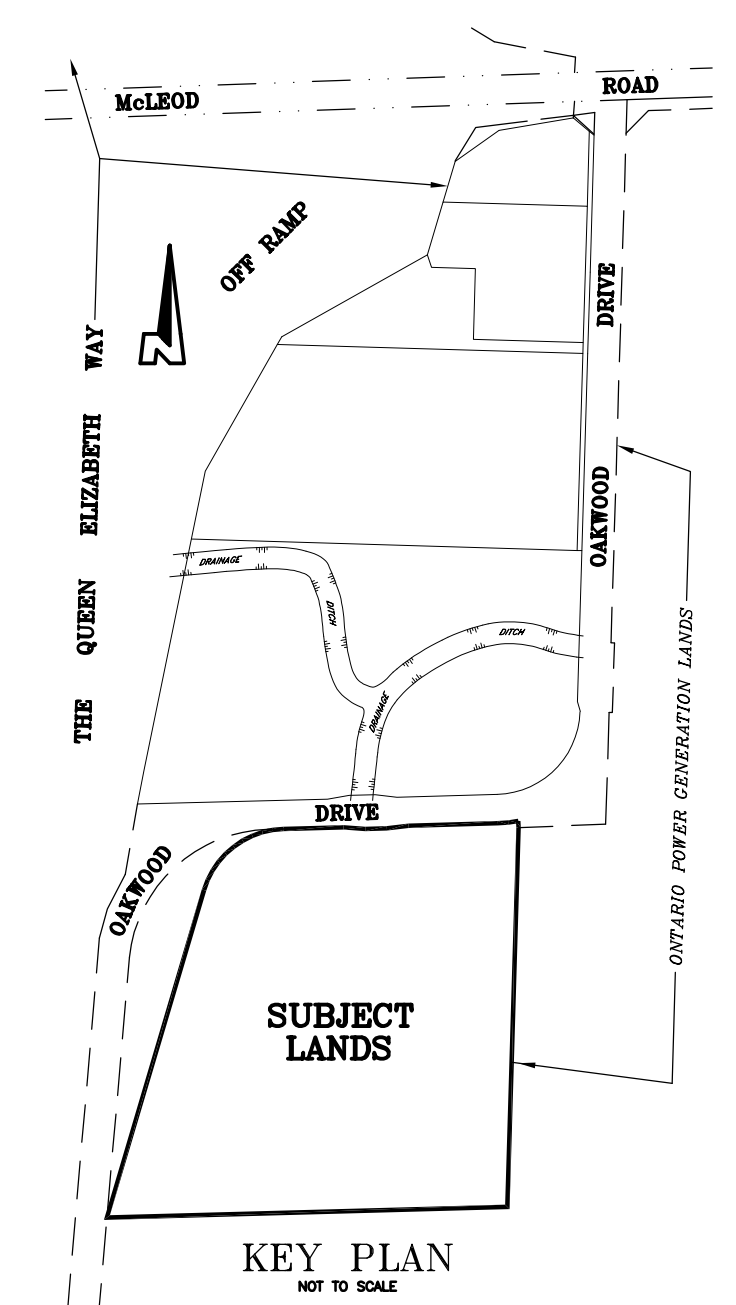


SKETCH
SHOWING TOPOGRAPHICAL INFORMATION



PART OF LOTS 187
GEOGRAPHIC TOWNSHIP OF STAMFORD
IN THE
CITY OF NIAGARA FALLS
REGIONAL MUNICIPALITY OF NIAGARA
SCALE 1 : 500

METRIC NOTE
DISTANCES SHOWN ON THIS PLAN ARE IN METRES AND CAN BE CONVERTED TO FEET BY DIVIDING BY 0.3048.

© COPYRIGHT 2020
THE REPRODUCTION, ALTERATION OR USE OF THIS SKETCH IN WHOLE OR IN PART WITHOUT THE EXPRESS WRITTEN PERMISSION OF CHAMBERS AND ASSOCIATES SURVEYING LTD., IS STRICTLY PROHIBITED.

NOTE
THIS BOUNDARY IS PREPARED FROM COMPILED AND CALCULATED INFORMATION, NOT FROM AN ACTUAL SURVEY.
DO NOT SCALE FROM THIS DRAWING.

"THIS IS NOT AN ORIGINAL COPY UNLESS EMBOSSED WITH SEAL."

CAUTION
THIS IS NOT A PLAN OF SURVEY AND SHALL NOT BE USED EXCEPT FOR THE PURPOSE INDICATED IN THE TITLE BLOCK

BENCHMARK
ELEVATIONS HEREON ARE GEODETIC AND ARE REFERRED TO THE CITY OF NIAGARA FALLS BENCHMARK NO. 90036053.
ELEVATION = 181.91 METRES.

LEGEND

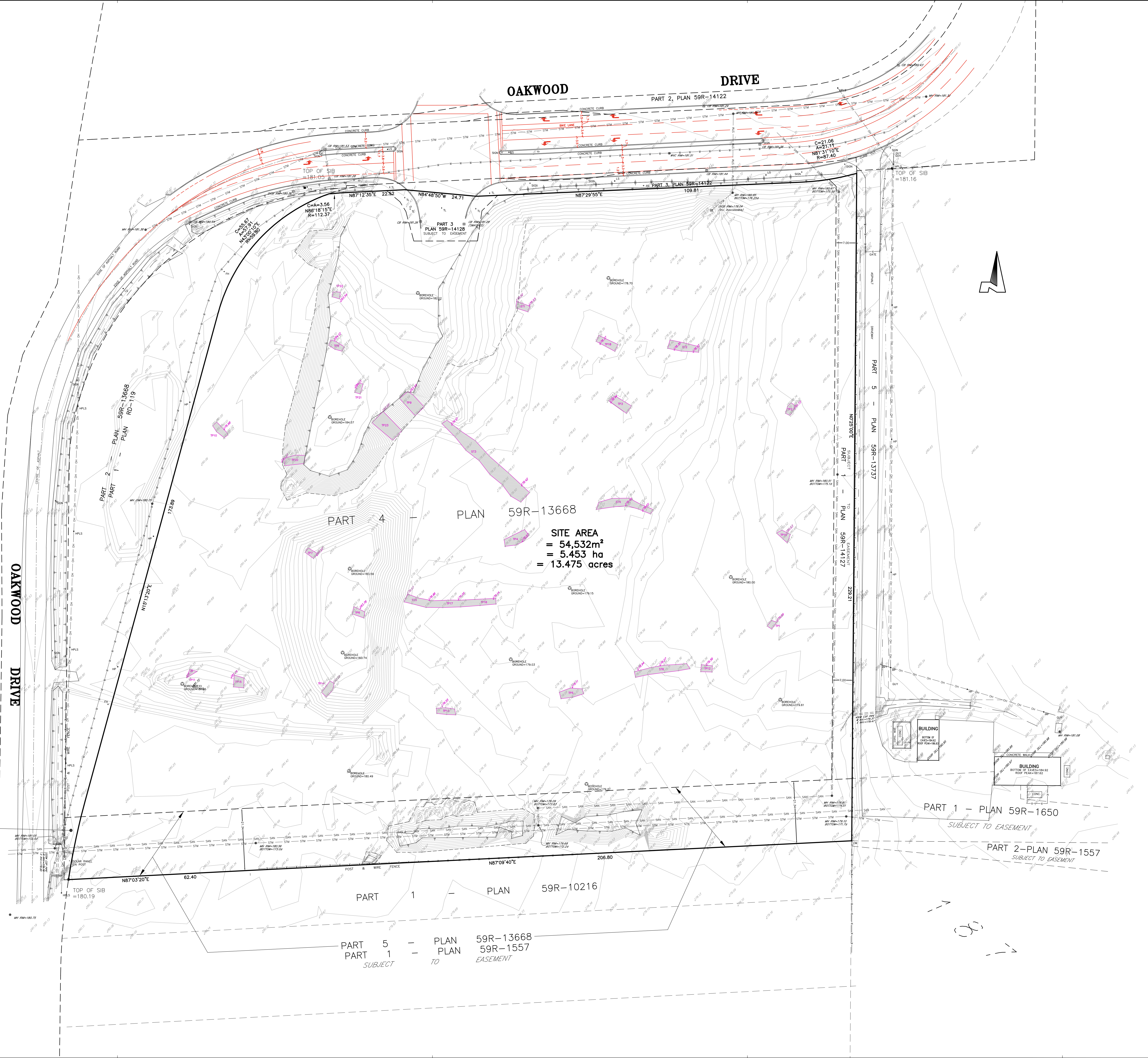
CB	EXISTING GROUND ELEVATION
MH	CATCH BASIN
FH	MANHOLE
OV	FIRE HYDRANT
LS	GAS VALVE
HP	LIGHT STANDARD
CSP	HYDRO POLE
---	CORRUGATED STEEL PIPE
---	SANITARY SEWER
---	STORM SEWER
---	WATERMAIN
---	OVERHEAD HYDRO

UTILITIES
LOCATION OF UNDERGROUND UTILITIES SHOWN WERE SUPPLIED BY THE VARIOUS AGENCIES; VERIFICATION OF THE EXISTENCE, LOCATION, SIZE, TYPE, ETC., OF THE UTILITY SHOULD BE MADE WITH THE PERTINENT AGENCY. ACCURATE LOCATION OF UTILITIES SHOULD BE VERIFIED BY FIELD LOCATES.

REVISIONS

Rev #	REVISION	Date
0	FIRST SUBMISSION TO CLIENT	Nov. 19/20
1	FINAL SUBMISSION	Dec. 1/20

CHAMBERS AND ASSOCIATES SURVEYING LTD.
12 THOROLD ROAD EAST WELLSLAND ONTARIO L3C 3T2
(905) 735-7841 / 735-7844
FAX (905) 735-7333
www.cas-surveying.com



0
1

PART 3, PLAN 59R-13668
SUBJECT TO EASEMENT AS
IN INST. NO. R0568853

PART 5 - PLAN 59R-13668
PART 1 - PLAN 59R-1557
SUBJECT TO EASEMENT

PART 1 - PLAN 59R-1650
SUBJECT TO EASEMENT
PART 2 - PLAN 59R-1557
SUBJECT TO EASEMENT

THE QUEEN ELIZABETH WAY

OAKWOOD DRIVE

OAKWOOD DRIVE

SITE AREA
= 54,532m²
= 5.453 ha
= 13.475 acres