

**SUITE TYPES (RESIDENTIAL)**

	BUILDING 'A' (COURTYARD BLDG)		TOTAL
	GROUND FLOOR	SECOND FLOOR	
STUDIO	31	34	65
1 BEDROOM	1	1	2
2 BEDROOM	1	1	2
TOTAL	33	36	69

	BUILDING 'B' (TOWER)		TOTAL
	GROUND FLOOR	SECOND FLOOR	
STUDIO	09	09	18
TOTAL	09	09	18

TOTAL UNIT COUNT (FOR BUILDINGS A & B) **87**

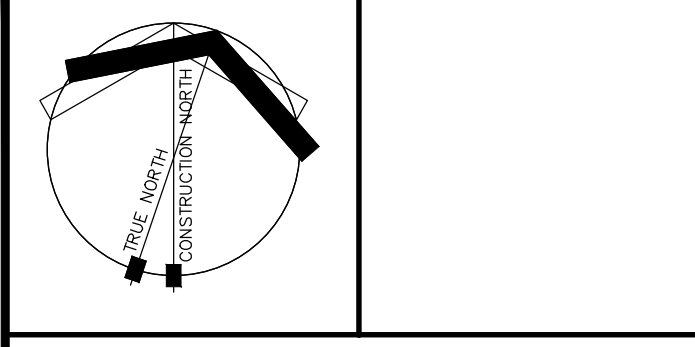
**LEGEND**

- EMERGENCY LIGHTING BATTERY UNIT WITH HEADS.
- ELECTRICAL PANEL
- FIRE PULL STATION
- F.E. FIRE EXTINGUISHER

REV	BY	DESCRIPTION	DATE
M2		ISSUED FOR OPA/ZBA	JUL 13-23

CONTRACTOR SHALL CHECK AND VERIFY ALL DIMENSIONS ON SITE. DO NOT SCALE DRAWINGS.

**ANTHONY ZAGARIA ARCHITECT**  
 3004 LUNDY'S LANE NIAGARA FALLS, ON  
 905.370.1111



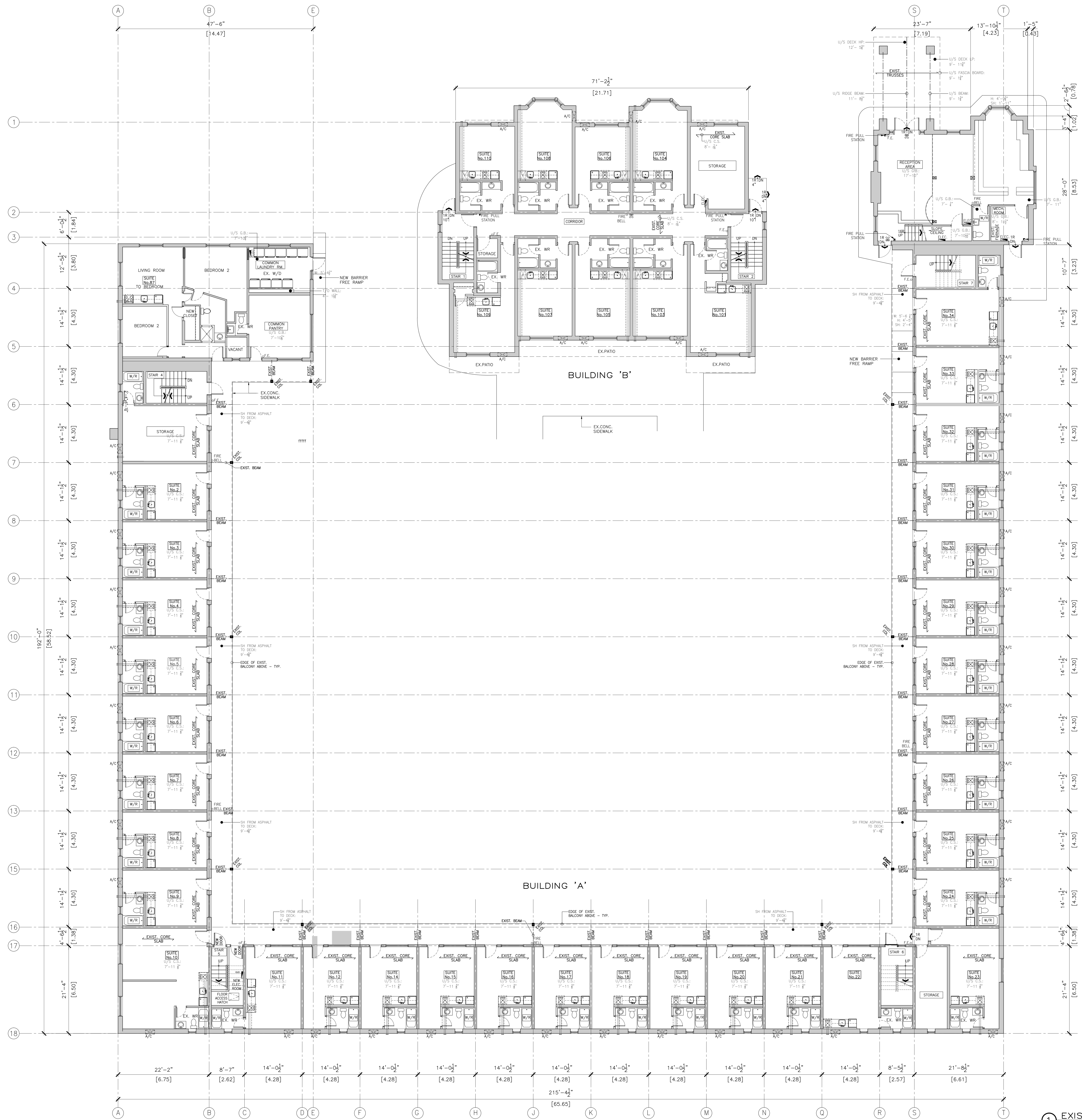
**PROJECT**  
**CARRIAGE HOUSE (BUILDING 1)**  
 3004 LUNDY'S LANE NIAGARA FALLS, ON

**EXIST. BASEMENT FLOOR PLAN**

DRAWN BY	J.L./M.G.	CONV. NO.	23-62
CHECKED	J.L.	DRAWING NO.	
SCALE	AS NOTED		
DATE	MAR. 27 2023		

**1 EXIST. BASEMENT FLOOR PLAN**  
 SCALE: 1/8" = 1'-0"

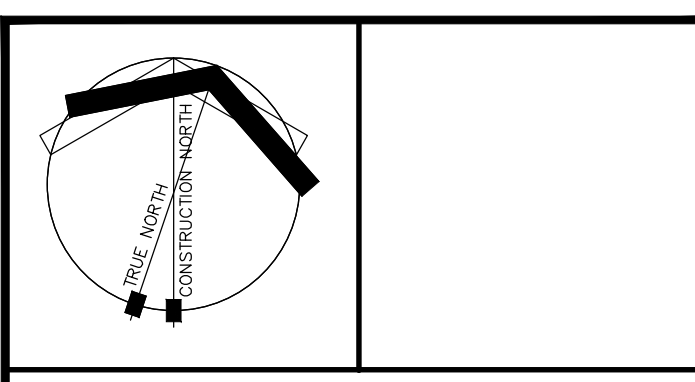
**EX1**



- LEGEND**
- EMERGENCY LIGHTING BATTERY UNIT WITH HEADS.
  - ELECTRICAL PANEL
  - FIRE PULL STATION
  - F.E. FIRE EXTINGUISHER

REV	BY	DESCRIPTION	DATE
M2		ISSUED FOR GPA/ZBA	JUL 13-23

CONTRACTOR SHALL CHECK AND VERIFY ALL DIMENSIONS ON SITE. DO NOT SCALE DRAWINGS.



**PROJECT**  
**CARRIAGE HOUSE**  
 (BUILDING 1)  
 3004 LUNDY'S LANE NIAGARA FALLS, ON

**EXIST. GROUND FLOOR PLAN**

DRAWN BY	M.G./R.L.	CONV. NO.	23-62
CHECKED	J.L.	DRAWING NO.	
SCALE	AS NOTED		
DATE	MAR. 27 2023		

**1 EXIST. GROUND FLOOR PLAN**  
 SCALE: 1/8" = 1'-0"

**EX2**



- LEGEND**
- EMERGENCY LIGHTING BATTERY UNIT WITH HEADS.
  - ▬ ELECTRICAL PANEL
  - ⬮ FIRE PULL STATION
  - F.E. FIRE EXTINGUISHER

REV	BY	DESCRIPTION	DATE
M2		ISSUED FOR OPA/ZBA	JUL 13-23

CONTRACTOR SHALL CHECK AND VERIFY ALL DIMENSIONS ON SITE. DO NOT SCALE DRAWINGS.



**PROJECT**  
CARRIAGE HOUSE (BUILDING 1)  
3004 LUNDY'S LANE NIAGARA FALLS, ON

DRAWN BY	M.G./R.L.	CONV. NO.	23-62
CHECKED	J.L.	DRAWING NO.	
SCALE	AS NOTED		
DATE	MAR. 27 2023		

**EXIST. SECOND FLOOR PLAN**  
SCALE: 1/8" = 1'-0"

**EX3**