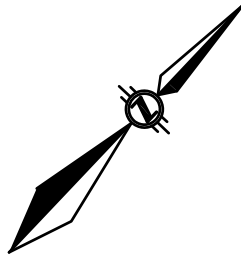
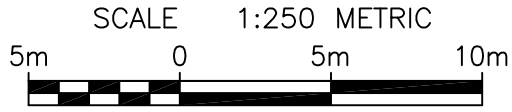


SITE CONDITION PLAN

LOTS 7 & 8 AND PART OF LOTS 6
REGISTERED PLAN No. 11
CITY OF NIAGARA FALLS
REGIONAL MUNICIPALITY OF NIAGARA



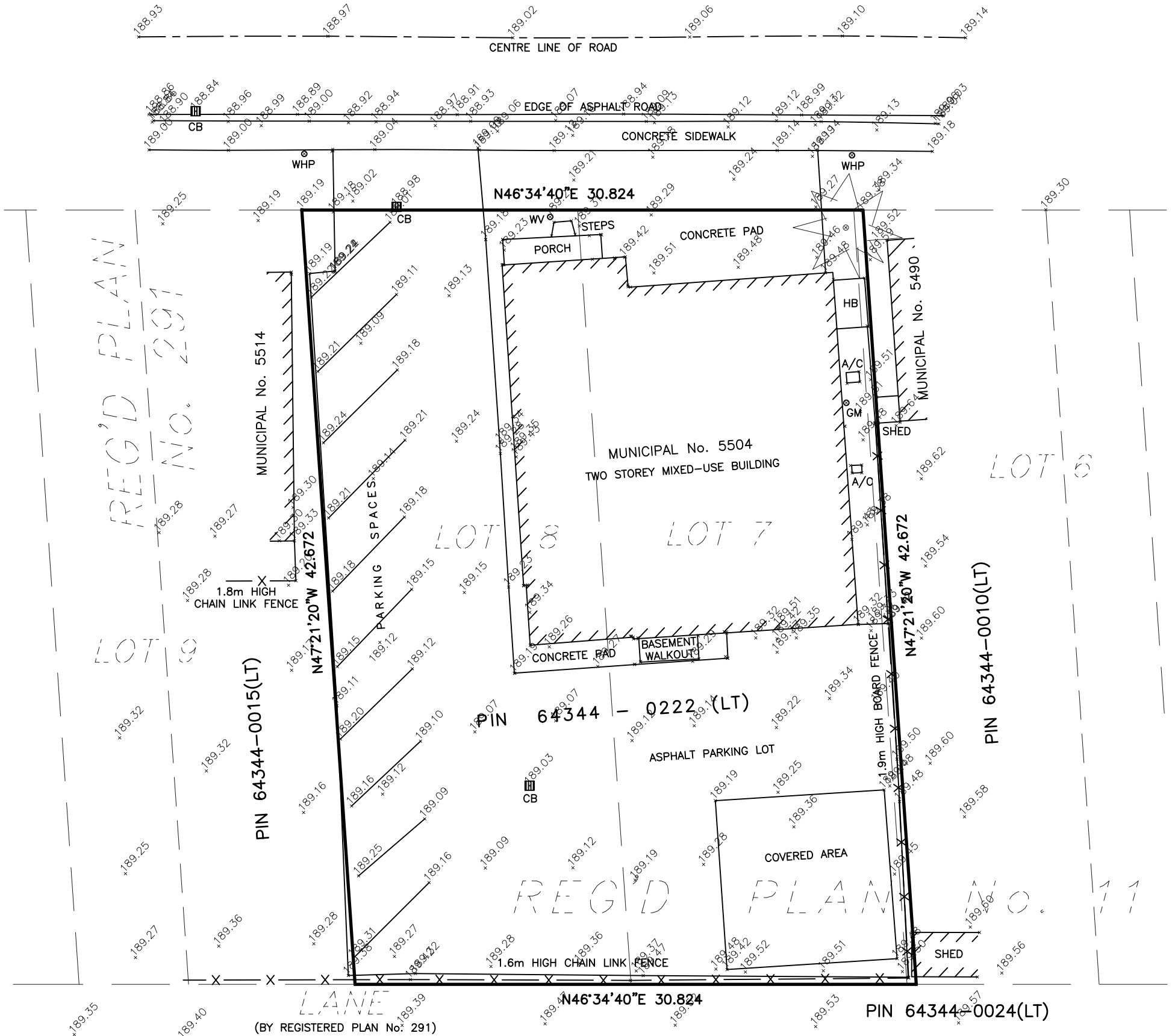
LEGEND

A/C	DENOTES	AIR CONDITIONING UNIT
CB	DENOTES	CATCH BASIN
GM	DENOTES	GAS METER
HB	DENOTES	HYDRO BOX
WHP	DENOTES	WOOD HYDRO POLE
WV	DENOTES	WATER VALVE
189.20	DENOTES	EXISTING ELEVATION
	DENOTES	CONIFEROUS TREE

LEWIS AVENUE

(BY REGISTERED PLAN No. 11)

PIN 64344-0003(LT)



BEARING NOTE

BEARINGS HEREON ARE GRID BEARINGS AND ARE DERIVED FROM OBSERVED REFERENCE POINTS BY REAL-TIME NETWORK OBSERVATIONS (LEICA SMARTNET) AND ARE REFERRED TO THE CENTRAL MERIDIAN 81°00'W LONGITUDE, ZONE 17, UNIVERSAL TRANSVERSE MERCATOR (6° UTM). THESE VALUES ARE NAD83 (CSRS v7) EPOCH 2010.0 REFERENCE SYSTEM.

ELEVATION NOTE

ELEVATIONS HEREON ARE ORTHOMETRIC AND ARE RELATED TO CGVD28, HT2, AS PREVIOUSLY ESTABLISHED BY THE LAROCQUE GROUP.

METRIC NOTE

DISTANCES SHOWN ON THIS PLAN ARE IN METRES AND CAN BE CONVERTED TO FEET BY DIVIDING BY 0.3048. DISTANCES SHOWN ON THIS PLAN ARE ADJUSTED GROUND LEVEL DISTANCES AND CAN BE USED TO COMPUTE GRID CO-ORDINATES BY MULTIPLYING THE DISTANCES BY A COMBINED SCALE FACTOR OF 0.99987708.



THE LAROCQUE GROUP
 O.L.S./PROJECT CONSULTANTS/LAND MANAGEMENT

12 LYMAN STREET, ST. CATHARINES, ONTARIO
 905-688-1413
 6385 COLBORNE STREET, NIAGARA FALLS, ONTARIO
 905-358-8400
 www.larocquegroup.ca

DATE : SEPTEMBER 22, 2022 FILE No. : NS2022-053
 DWG.FILE : NS2022-053-01