



**COLBORNE COURT
APARTMENTS**

ADDITIONS & ALTERATIONS

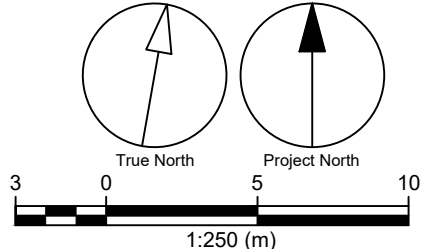
3777, 3791 & 3815 Portage Road
Niagara Falls, ON

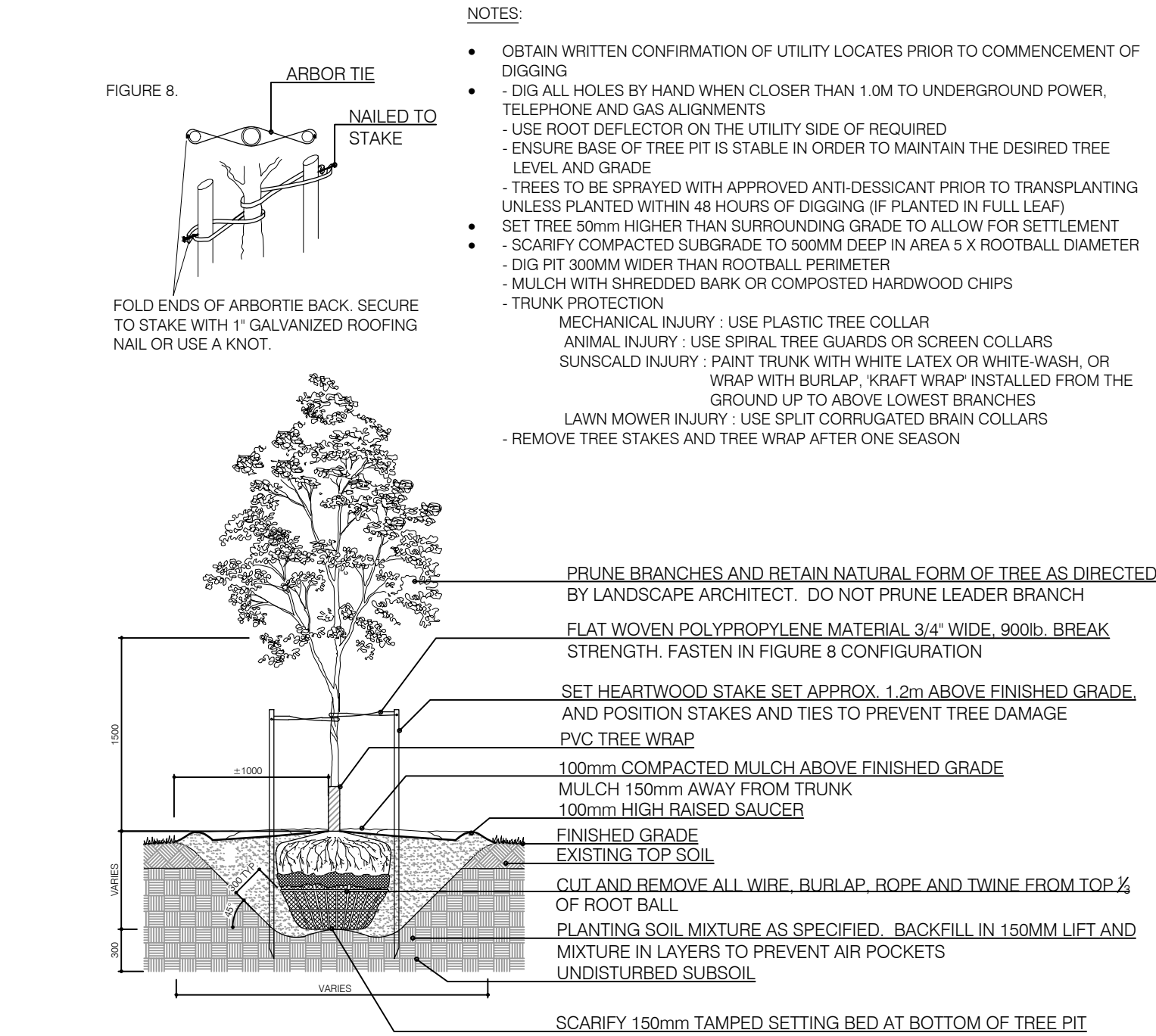
143308

L1.0



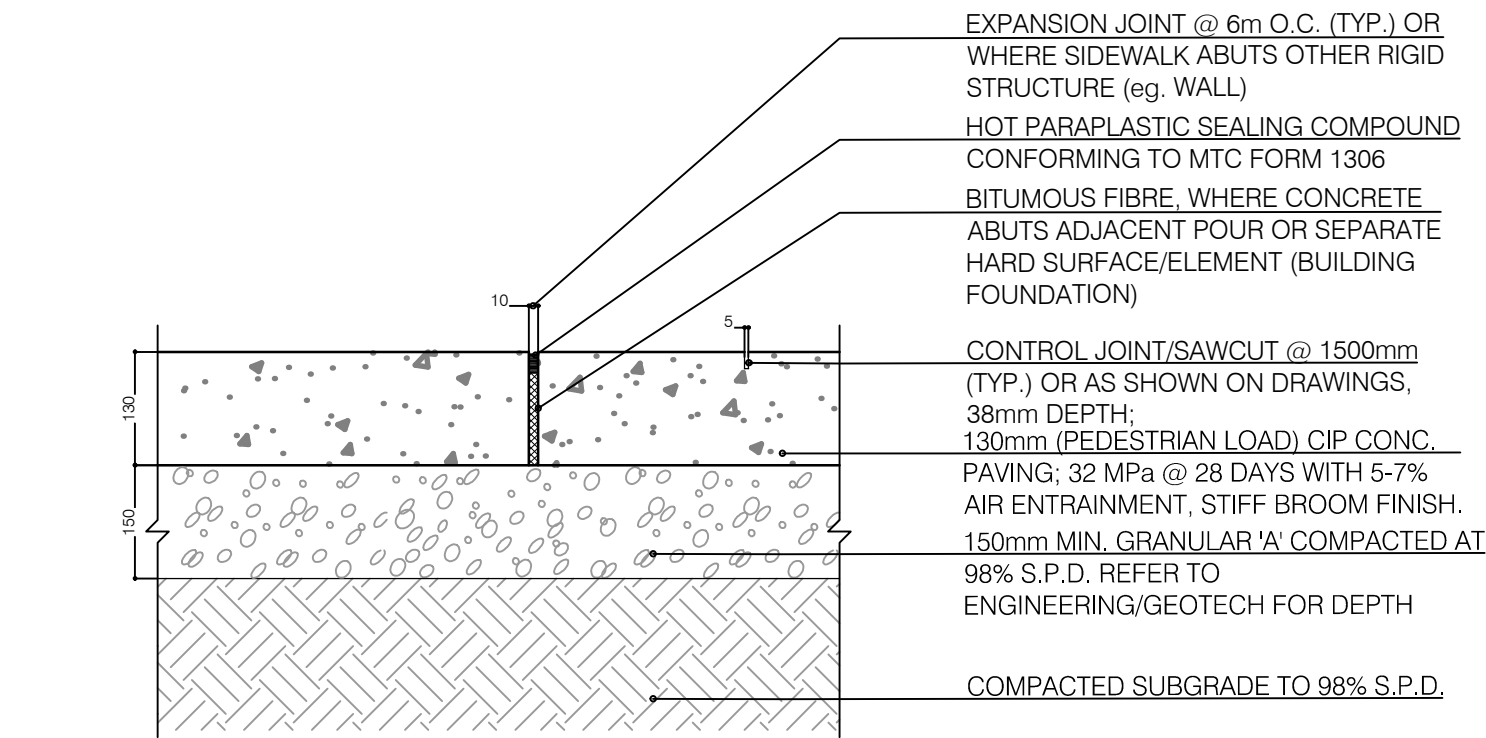
KEY	BOTANICAL NAME	COMMON NAME	CAL.	COND	MATURE HEIGHT (m)	MATURE SPREAD (m)	O.C. SPACING (m)	QNTY.	%	
DECIDUOUS TREES										
CC	<i>Cercis canadensis</i>	Eastern Redbud	50mm	W.B.	10.0	8.0	10.0	2	15.40%	
CO	<i>Celtis occidentalis</i>	Common Hackberry	50mm	W.B.	18.0	16.0	10.0	2	15.40%	
FG	<i>Fagus grandifolia</i>	American Beech	50mm	W.B.	25.0	20.0	10.0	2	15.40%	
LT	<i>Liriodendron tulipifera</i>	Tulip Tree	50mm	W.B.	25.0	15.0	10.0	2	15.40%	
OV	<i>Ostrya virginiana</i>	Ironwood	50mm	W.B.	12.0	8.0	10.0	2	15.40%	
TA	<i>Tilia americana</i>	Basswood	50mm	W.B.	25.0	15.0	10.0	2	15.40%	
							TOTAL	12		
CONIFEROUS TREES										
PB	<i>Picea pungens</i> 'Baby Blue'	Baby Blue Spruce		150cm	W.B.	10.0	5.0	6.0	1	7.70%
							TOTAL	1	100%	
SHRUBS										
Ha	<i>Hydrangea arborescens</i> 'Annabelle'	Annabelle Hydrangea			#3 cont.	1.5	1.5	1.5	5	
Hn	<i>Hydrangea macrophylla</i> 'Endless Crush'	Summer Crush Hydrangea			#3 cont.	0.8	0.8	0.8	26	
Jc	<i>Juniperus chinensis</i> 'Gold Coast'	Gold Coast Juniper		30cm	#3 cont.	1.0	1.5	1.5	4	
Jh	<i>Juniperus horizontalis</i> 'Blue Chip'	Blue Chip Juniper		30cm	#3 cont.	0.3	2.0	2.0	18	
Jv	<i>Juniperus virginiana</i> 'Taylor'	Taylor Eastern Cedar		30cm	#3 cont.	5.0	1.25	1.25	6	
Pl	<i>Potentilla fruticosa</i> 'Abbotswood'	Abbotswood Cinquefoil			#2 cont.	0.6	0.6	0.6	8	
To	<i>Thuja occidentalis</i> 'North Pole'	North Pole Cedar		30cm	#3 cont.	5.0	2.0	2.0	17	
							TOTAL	84		
PERENNIALS/ORNAMENTAL GRASSES										
as	<i>Astilbe x 'Sugarberg'</i>	False Spirea			#1 cont.	0.25	0.4	0.4	59	
ca	<i>Calamagrostos acutiflora</i> Karl Foerster'	Feather Reed Grass			#1 cont.	1.5	0.8	0.8	17	
hb	<i>Heuchera x Berry Smoothie</i>	Coral Bells			#1 cont.	0.5	0.6	0.6	16	
hc	<i>Heemerocalis</i> 'Cloud Baron'	Daylily			#1 cont.	0.75	0.6	0.6	8	
hd	<i>Hosta</i> 'Diana Remembered'	Plantain Lily			#1 cont.	0.4	0.8	0.8	28	
pa	<i>Pennisetum alopecuroides</i>	Fountain Grass			#1 cont.	1.2	1.0	1.0	22	
pc	<i>Pennisetum alopecuroides</i> 'Cassian'	Cassian Fountain Grass			#1 cont.	0.6	0.45	0.45	8	
ss	<i>Schizachyrium scoparium</i> 'The Blues'	Little Bluestem			#1 cont.	0.9	0.7	0.7	12	
							TOTAL	170		





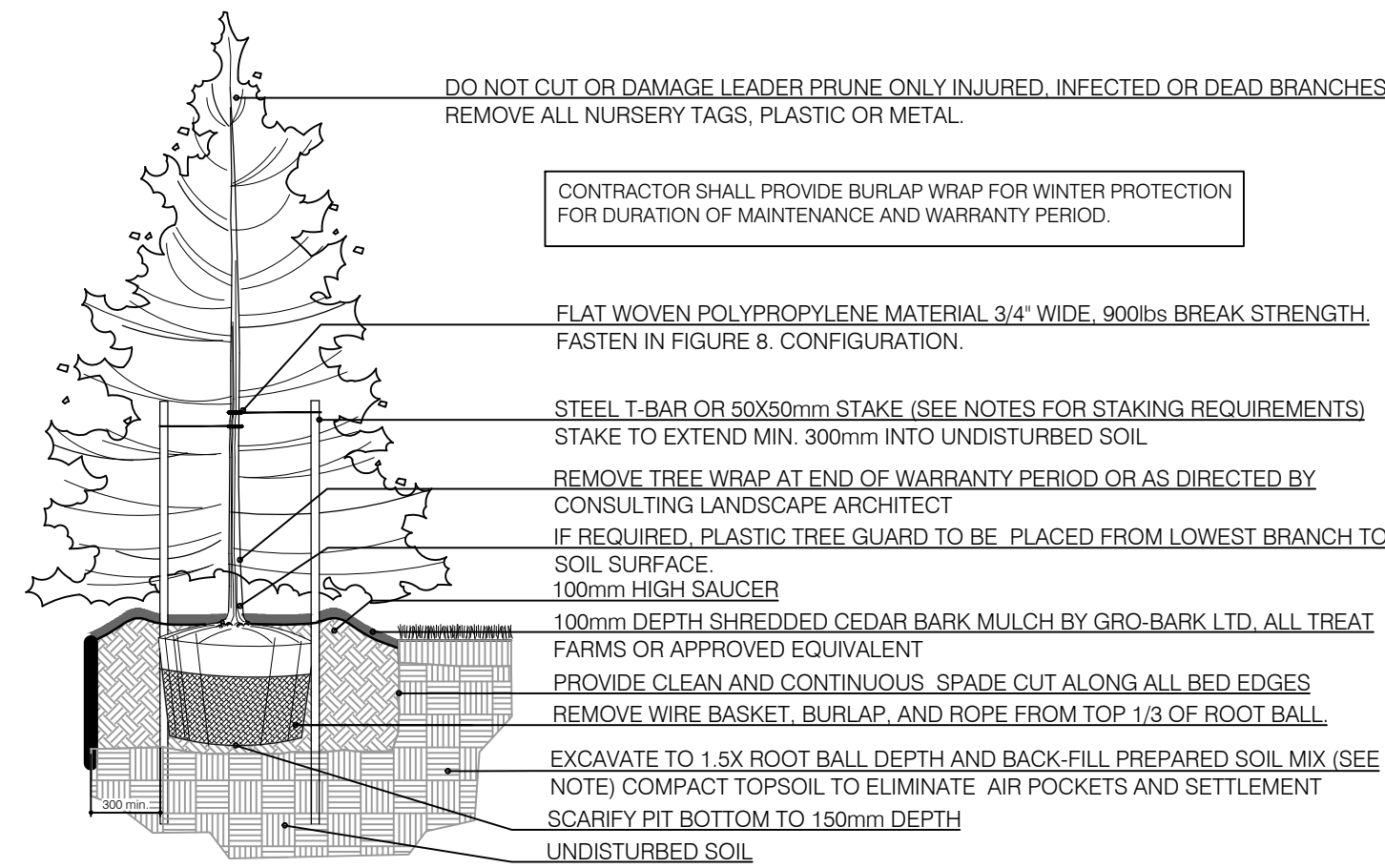
1
L2.0

BALLED & BURLAPPED/WIRE BASKET DECIDUOUS TREE
N.T.S.



5
L2.0

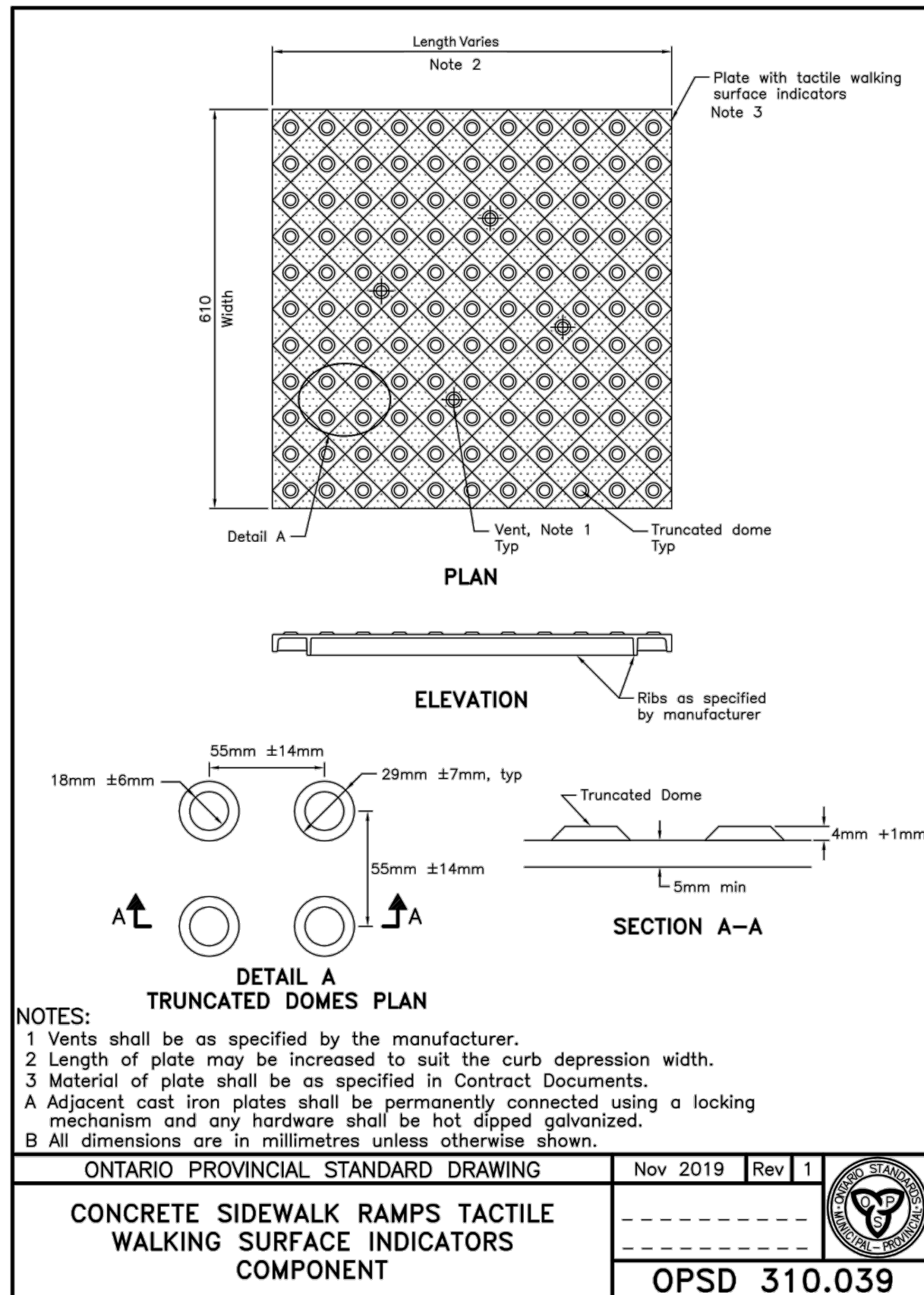
CIP PEDESTRIAN LOAD CONCRETE
N.T.S.



- NOTES:
- SOIL MIXTURE: FOUR (4) PARTS NATIVE SOIL, ONE (1) PART WELL ROTTED COMPOST.
 - SAUCER SHALL BE SOAKED WITH WATER AND MULCHED IMMEDIATELY FOLLOWING PLANTING.
 - ALL DIMENSIONS ARE IN mm.
 - STAKING SCHEDULE:
 - < 2500mm HT. - ONE STAKE
 - > 2500mm HT. - TWO STAKES
 - SPACED TREES - THREE STAKES OR GUY WIRES
 - ALL SUPPORT SYSTEMS MUST BE REMOVED ONCE TREE IS ESTABLISHED.
 - ALL TREES TO BE STRAIGHT AND PLANTED VERTICALLY REGARDLESS OF SLOPE.
 - TOP OF ROOT FLARE SHALL BE POSITIONED 50mm ABOVE GRADE.

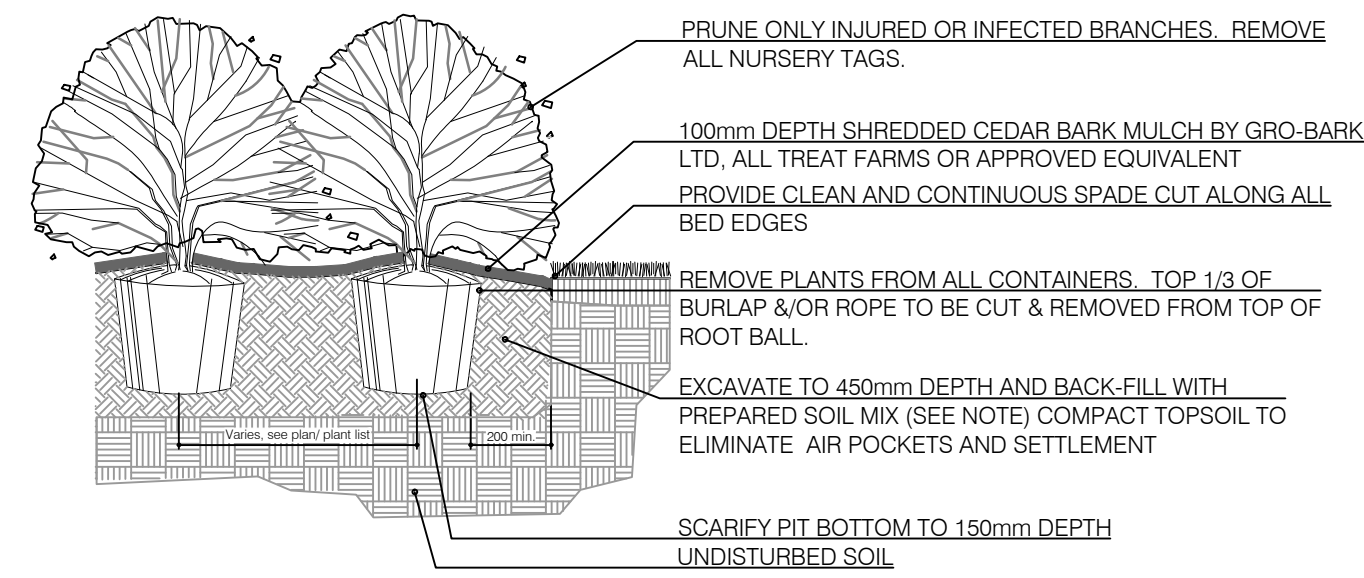
2
L2.0

BALLED & BURLAPPED/WIRE BASKET CONIFEROUS TREE
N.T.S.



6
L2.0

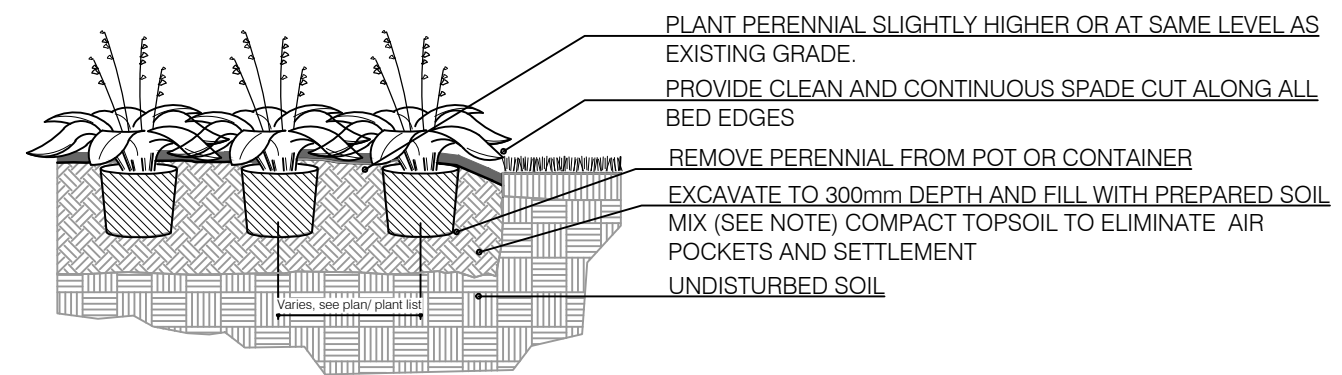
CONCRETE SIDEWALK TACTILE WALKING SURFACE INDICATOR
N.T.S.



- NOTES:
- SOIL MIXTURE: FOUR (4) PARTS NATIVE SOIL, ONE (1) PART WELL ROTTED COMPOST.
 - SAUCER SHALL BE SOAKED WITH WATER AND MULCHED IMMEDIATELY FOLLOWING PLANTING.
 - ALL DIMENSIONS ARE IN mm.
 - IN POORLY DRAINED SOILS PLANT SHRUB SLIGHTLY HIGHER THAN ADJACENT GRADE.
 - ALL PLANTS TO BE STRAIGHT AND PLANTED VERTICALLY REGARDLESS OF SLOPE.

3
L2.0

BALLED AND BURLAPPED/POTTED SHRUB
N.T.S.

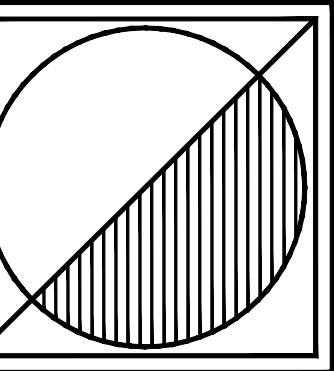


- NOTES:
- SOIL MIXTURE: FOUR (4) PARTS NATIVE SOIL, ONE (1) PART WELL ROTTED COMPOST
 - SAUCER SHALL BE SOAKED WITH WATER AND MULCHED IMMEDIATELY FOLLOWING PLANTING.
 - ALL DIMENSIONS ARE IN mm.
 - CUT AND REMOVE CONTAINER. SCARIFY ROOTBALL SIDES.
 - ALL PLANTS TO BE STRAIGHT AND PLANTED VERTICALLY REGARDLESS OF SLOPE.

CONTRACTOR SHALL PROVIDE 75mm MULCH FOR ALL PERENNIALS EXCEPT GROUNDCOVERS UNLESS SPECIFIED OTHERWISE.

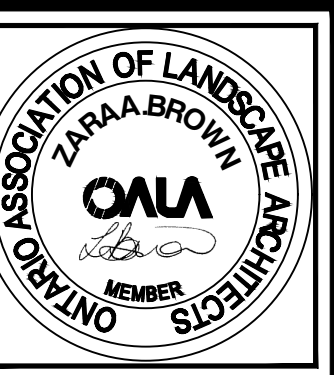
4
L2.0

CONTAINER GROWN PERENNIAL/GRASS
N.T.S.



Peter J. Lesdow
a r c h i t e c t

8157 Niagara River Parkway, Niagara Falls, Ontario L2G 0A8
Telephone: 905-352-1112 e-mail: plesdow@pjohnson.ca



LANDSCAPE DETAILS

DATE	REVISIONS
Dec. 01/24	ISSUED FOR ZBA

COLBORNE COURT
APARTMENTS
ADDITIONS & ALTERATIONS
3777, 3791 & 3815 Portage Road
Niagara Falls, ON

DATE:	2024-01-31
SCALE:	AS NOTED
DRAWN BY:	TK
CHECK BY:	ZB

145508

L2.0