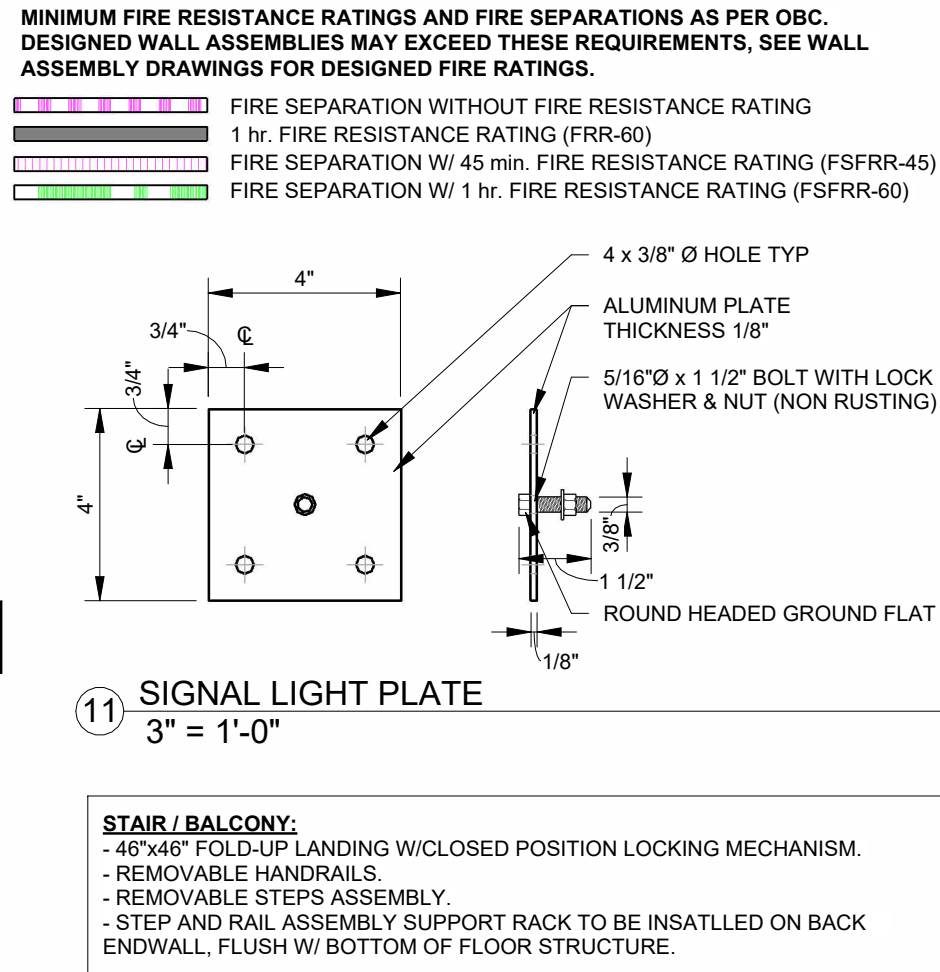
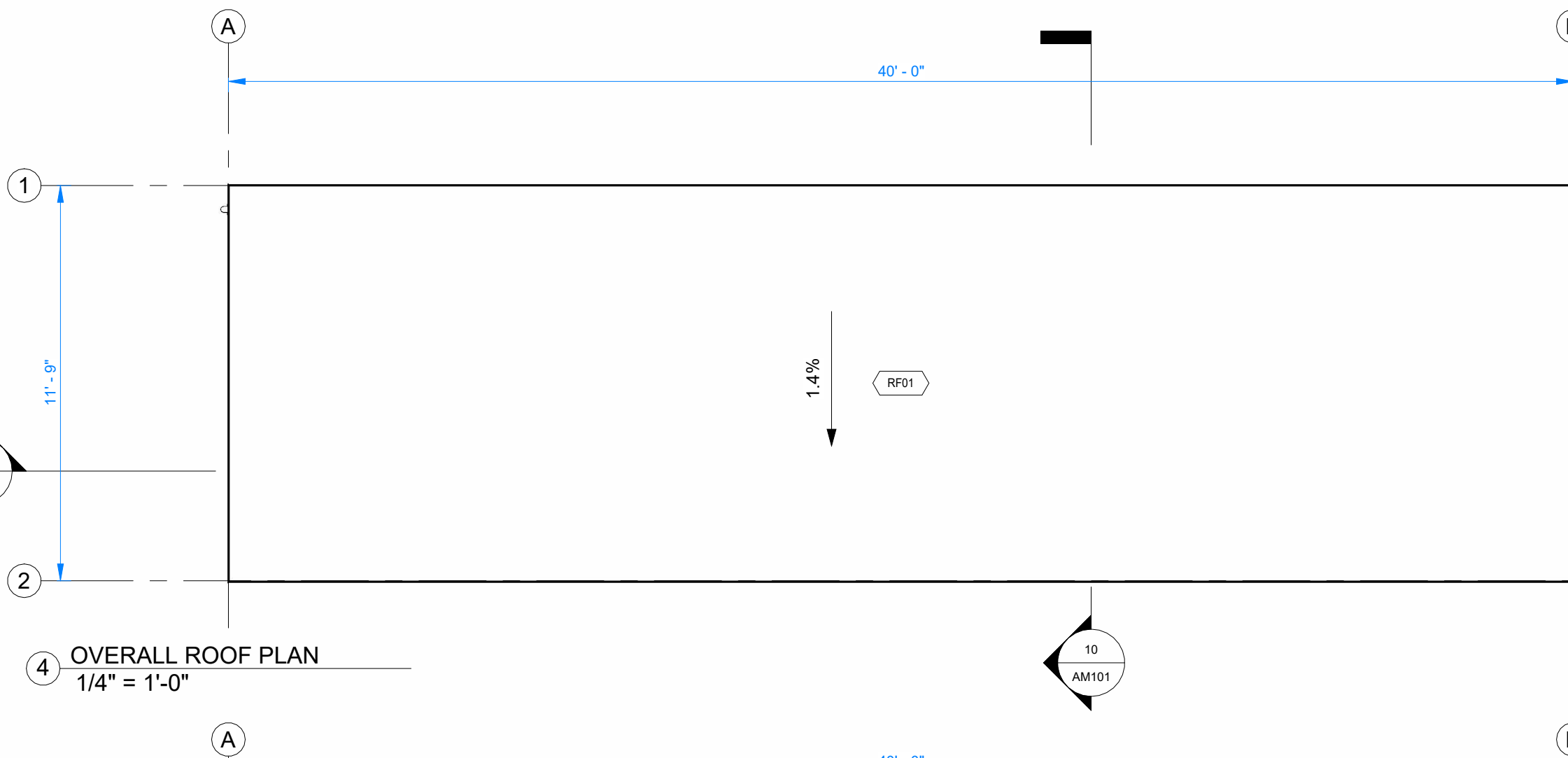
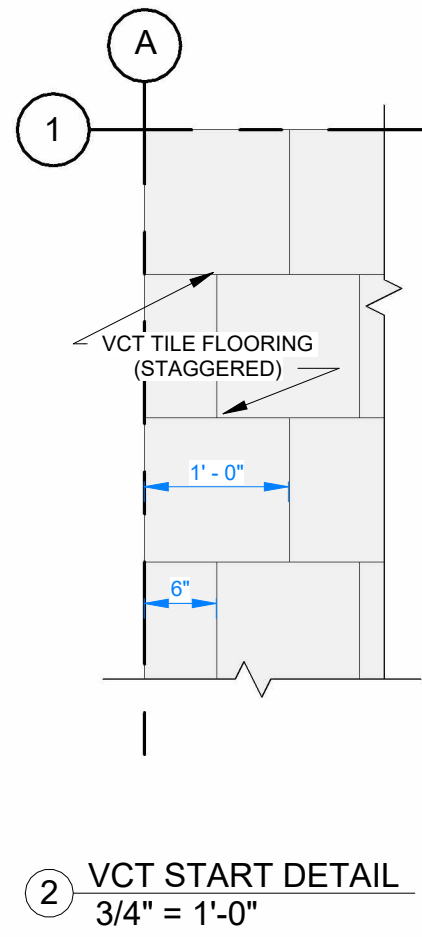
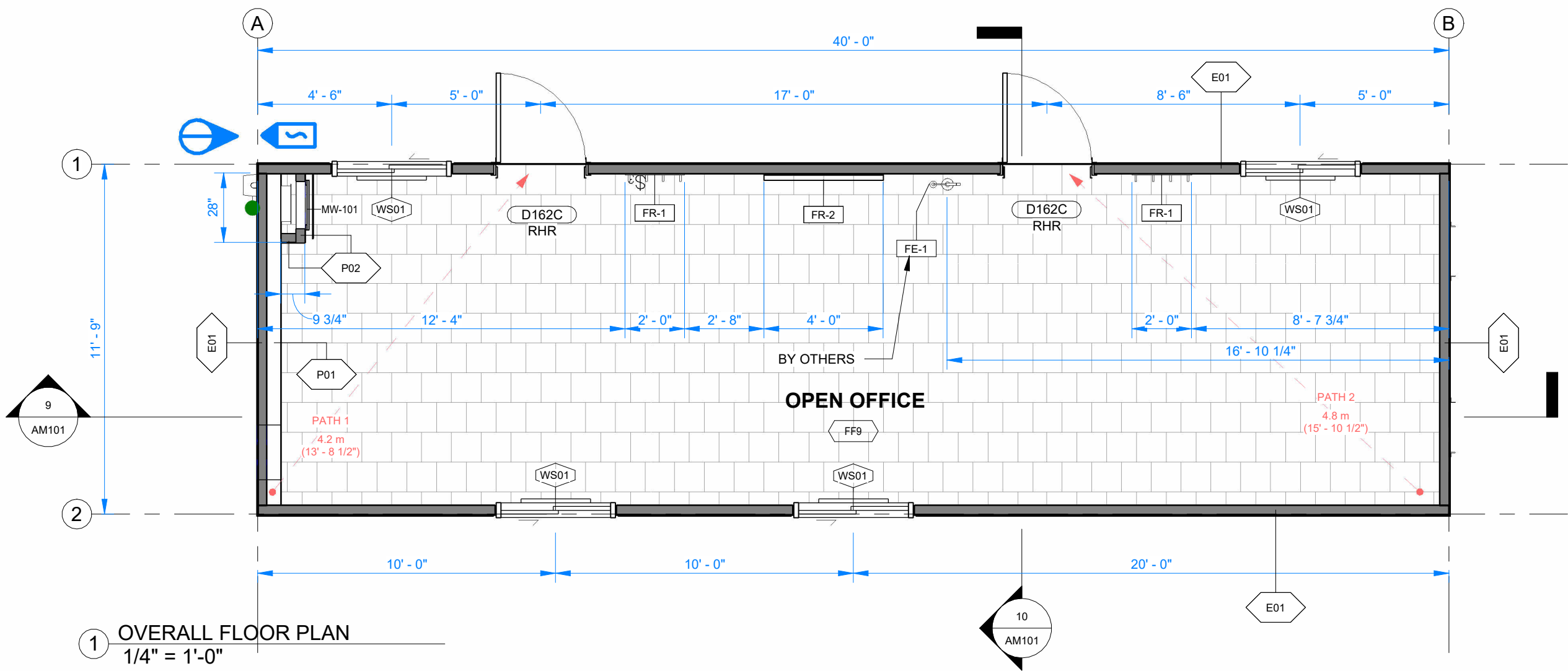


0	2025-08-13	ISSUED FOR CONSTRUCTION	DK	CM
A	2025-08-05	ISSUED FOR 90% REVIEW	DK	
REV.	DATE	DESCRIPTION	BY	CHK/APR

PROJECT NO:	DRAWING NO:	REV. #
1127059	AM001	0



OVERALL - ROOM FINISH SCHEDULE							
ROOM	FLOOR FINISH	BASE FINISH	WALL FINISH	WINDOW TRIM	CEILING FINISH	CROWN MOLDING	CEILING HEIGHT
OPEN OFFICE	SEALED & WAXED 12" x 12" ARMSTRONG VCT TILE COLOUR: COOL WHITE	4" RUBBER BASE COLOUR: GREY	1/4" VINYL COVERED LUAN BOARD COLOUR: OAKPLY ATOMIC GRANIT C/W MATCHING BATTENS	2 1/4" GREY PVC	VINYL COVERED GWB COLOUR: DELTA MOONLIGHT 698	MATCHING WALL BATTENS	8' - 0 1/2"

FURNISHING SCHEDULE			
TAG	QTY	DESCRIPTION	SCOPE
FR-1	2	4 HOOK COAT HOOK BOARD 5" x 24"	PSPI
FR-2	1	24" x 48" CORKBOARD	PSPI

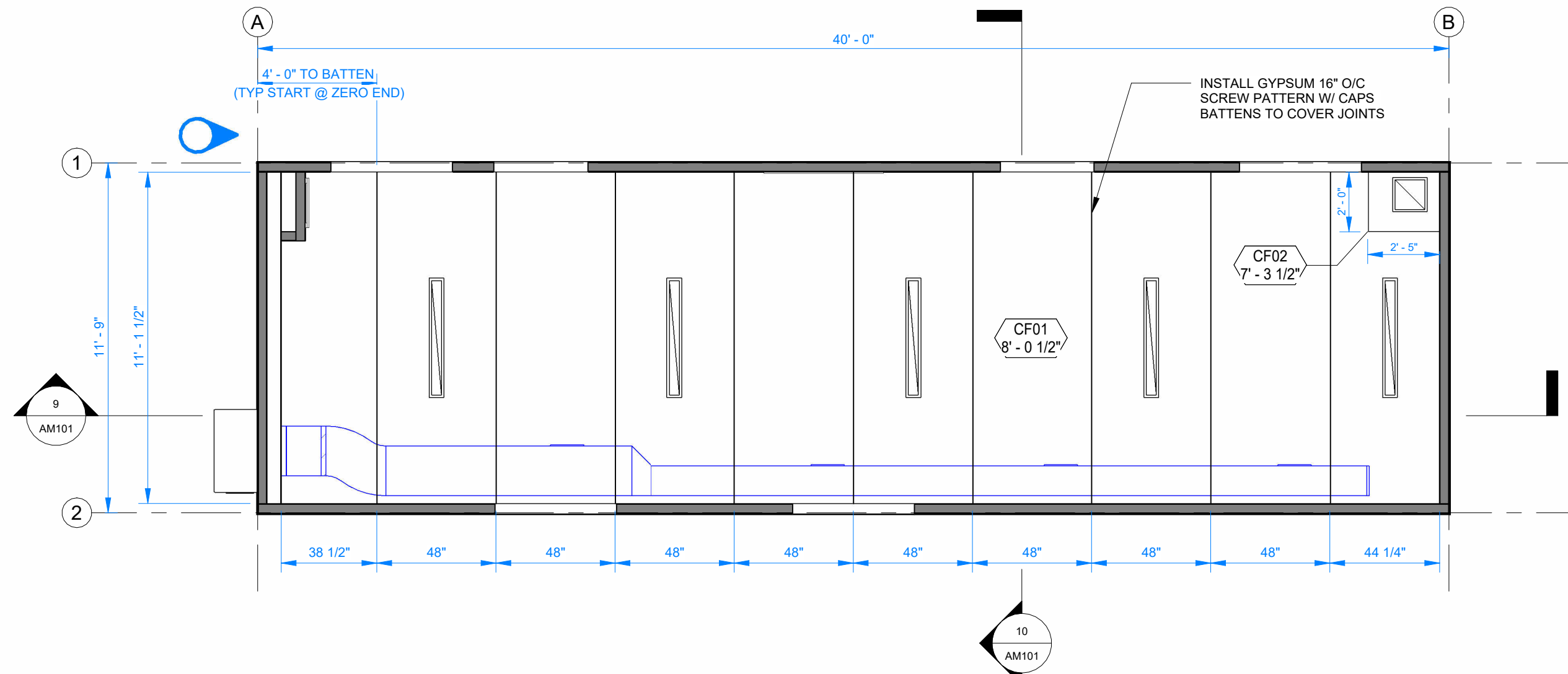
DOOR SCHEDULE			
DOOR TAG	QTY	WINDOW NO.	QTY
D162C	2	WS01	4
	2		

MILLWORK SCHEDULE - OVERALL			
ITEM	QTY	DESCRIPTION	COMMENTS
MW-101	1	3/4" x 20" x 67" FLAT MELAMINE DOOR PANEL W/ (3) FULL OVERLAY CONCEALED HINGES AND A MAGNETIC CATCH	FINISH: WHITE

PATH OF TRAVEL SCHEDULE			
PATH	ft	m	
PATH 1	13' - 8 1/2"	4 m	
PATH 2	15' - 10 5/8"	5 m	

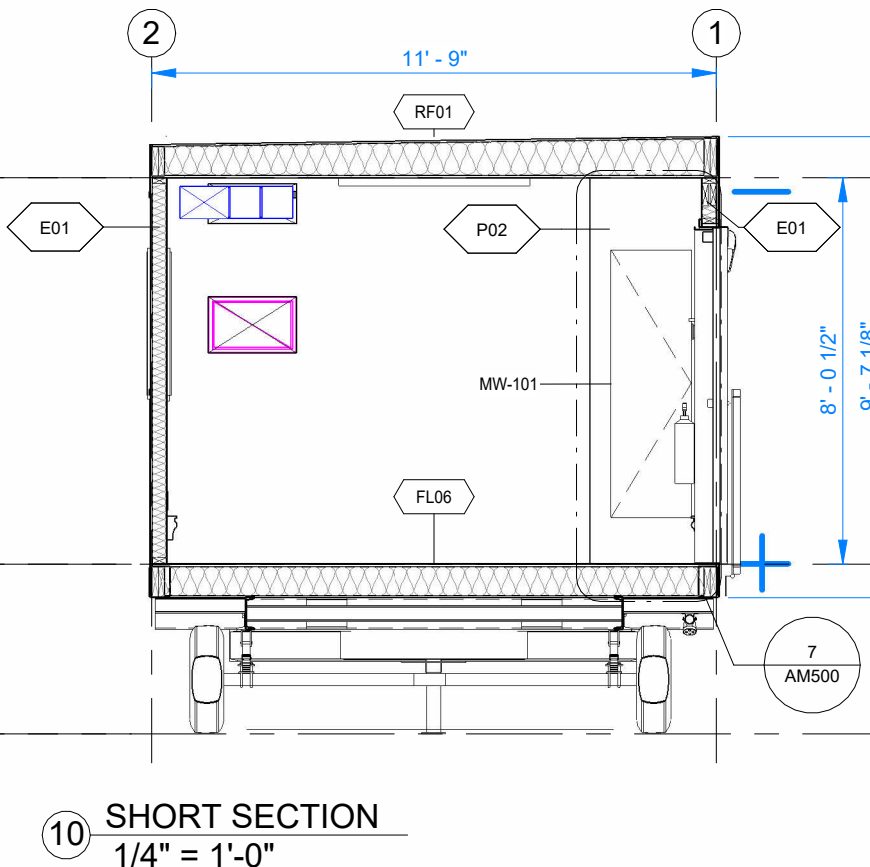
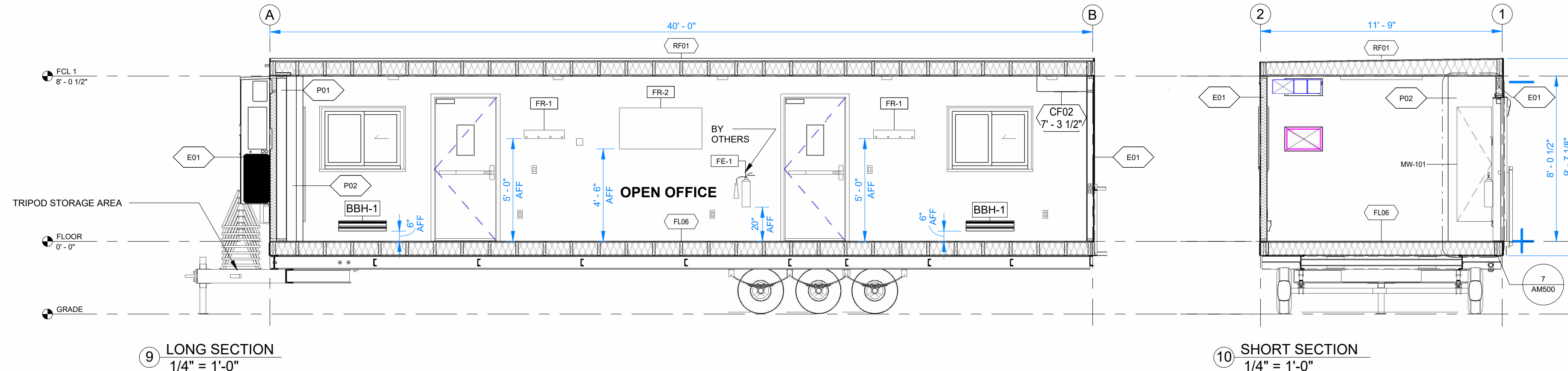
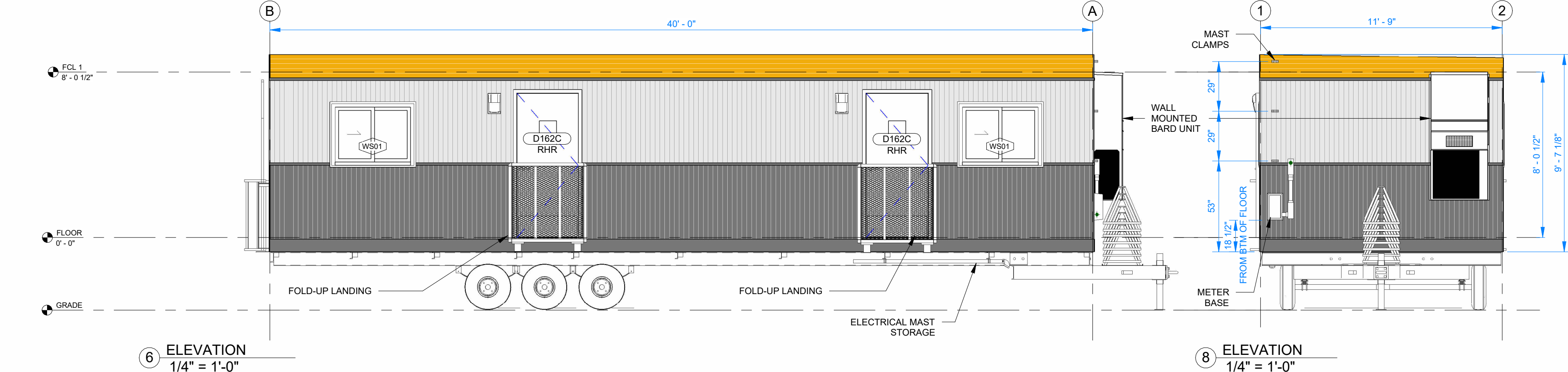
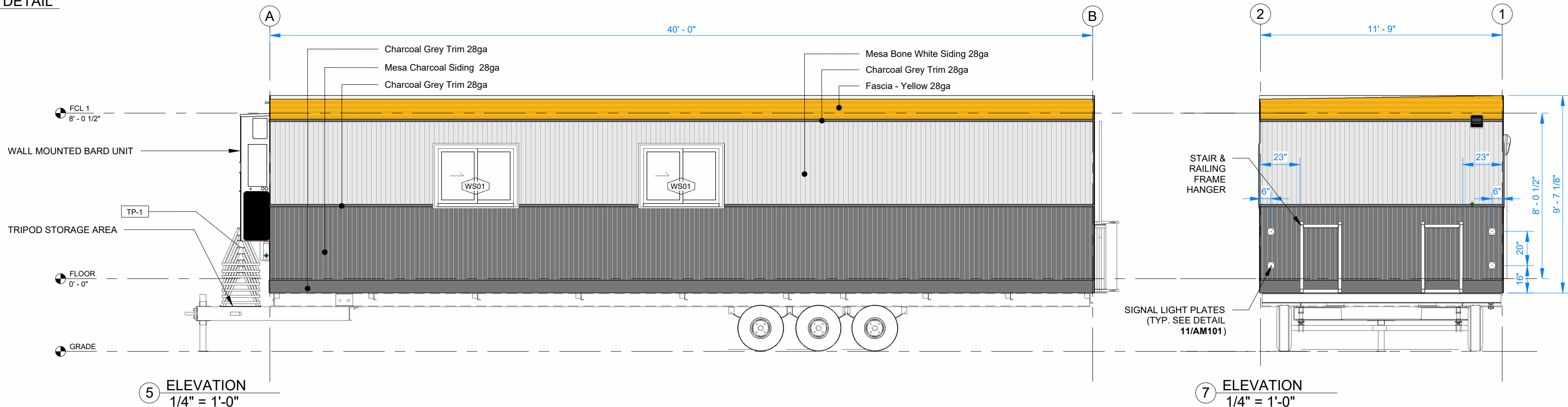
EQUIPMENT SCHEDULE		
ITEM	QTY	DESCRIPTION
TP-1	8	22" x 22" x 22"H STEEL ADJUSTABLE TRIPOD. BLACK PAINT FINISH (GLASS COAT 400)

FLOORING LEGEND	
<div><div></div><div></div><div></div></div>	ARMSTRONG VCT TILE
<div><div></div><div></div><div></div></div>	COOL WHITE



CEILING FINISHES LEGEND				
TAG	TYPE	COLOUR	CEILING HEIGHT	NOTES
CF01	1/2" GWB VINYL FINISH	DELTA MOONLIGHT 698	8' - 0 1/2"	
CF02	1/2" GWB VINYL FINISH	DELTA MOONLIGHT 698	7' - 3 1/2"	BULKHEAD

FIRE ALARM LEGEND		LIGHTING SYMBOL LEGEND		MECHANICAL LEGEND	
SYMBOL	DESCRIPTION	SYMBOL	DESCRIPTION	SYMBOL	DESCRIPTION
[Symbol]	SMOKE DETECTOR	[Symbol]	CEILING MOUNTED FIXTURE	[Symbol]	T-BAR CEILING DIFFUSER, NECK SIZE AS SHOWN.
[Symbol]	RATE OF RISE HEAT DETECTOR	[Symbol]	TROFFER FIXTURE	[Symbol]	LAY-IN EGGRATE RETURN AIR GRILLE
[Symbol]	STANDALONE SMOKE DETECTOR	[Symbol]	OCCUPANCY SENSOR		
[Symbol]	STANDALONE FIRE ALARM	[Symbol]	EMERGENCY LIGHT BATTERY UNIT		
		[Symbol]	EMERGENCY LIGHT DOUBLE REMOTE HEAD		



©2025 ATCO STRUCTURES & LOGISTICS LTD. ALL RIGHTS RESERVED THESE DRAWINGS CONTAIN CONFIDENTIAL INFORMATION AND ARE THE PROPERTY OF ATCO STRUCTURES & LOGISTICS LTD. THEY SHALL BE HELD IN STRICTEST CONFIDENCE AND CANNOT BE USED, COPIED, REPRODUCED DISCLOSED, PUBLISHED, DISTRIBUTED OR OTHERWISE EXPLOITED IN ANY FORM OR MANNER, IN WHOLE OR IN PART, FOR ANY REASON OTHER THAN THE REASON FOR WHICH THEY WERE PROVIDED TO YOU BY ATCO STRUCTURES & LOGISTICS LTD., WITHOUT EXPRESSED WRITTEN CONSENT OF ATCO STRUCTURES & LOGISTICS LTD.

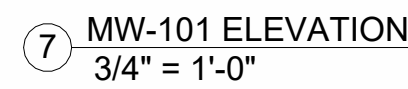
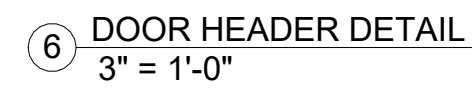
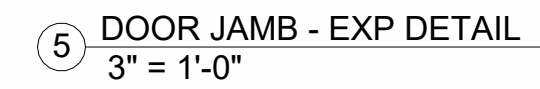
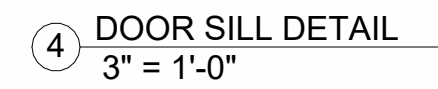
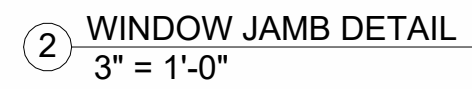
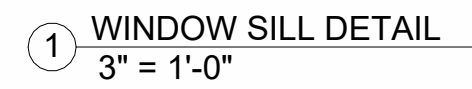
24X36 SHEET - DO NOT PRINT TO OTHER SCALE.

FOR CONSTRUCTION

REV.	DATE	DESCRIPTION	BY	CHK/APR
0	2025-08-13	ISSUED FOR CONSTRUCTION	DK	CM
A	2025-08-05	ISSUED FOR 90% REVIEW	DK	

PROJECT:	12x40 WHEELED OFFICE ONTARIO FLEET
CLIENT:	ATCO STRUCTURES

DRAWING TITLE:	OVERALL FLOOR PLAN
PROJECT NO:	1127059
DRAWING NO:	AM101
REV. #	0



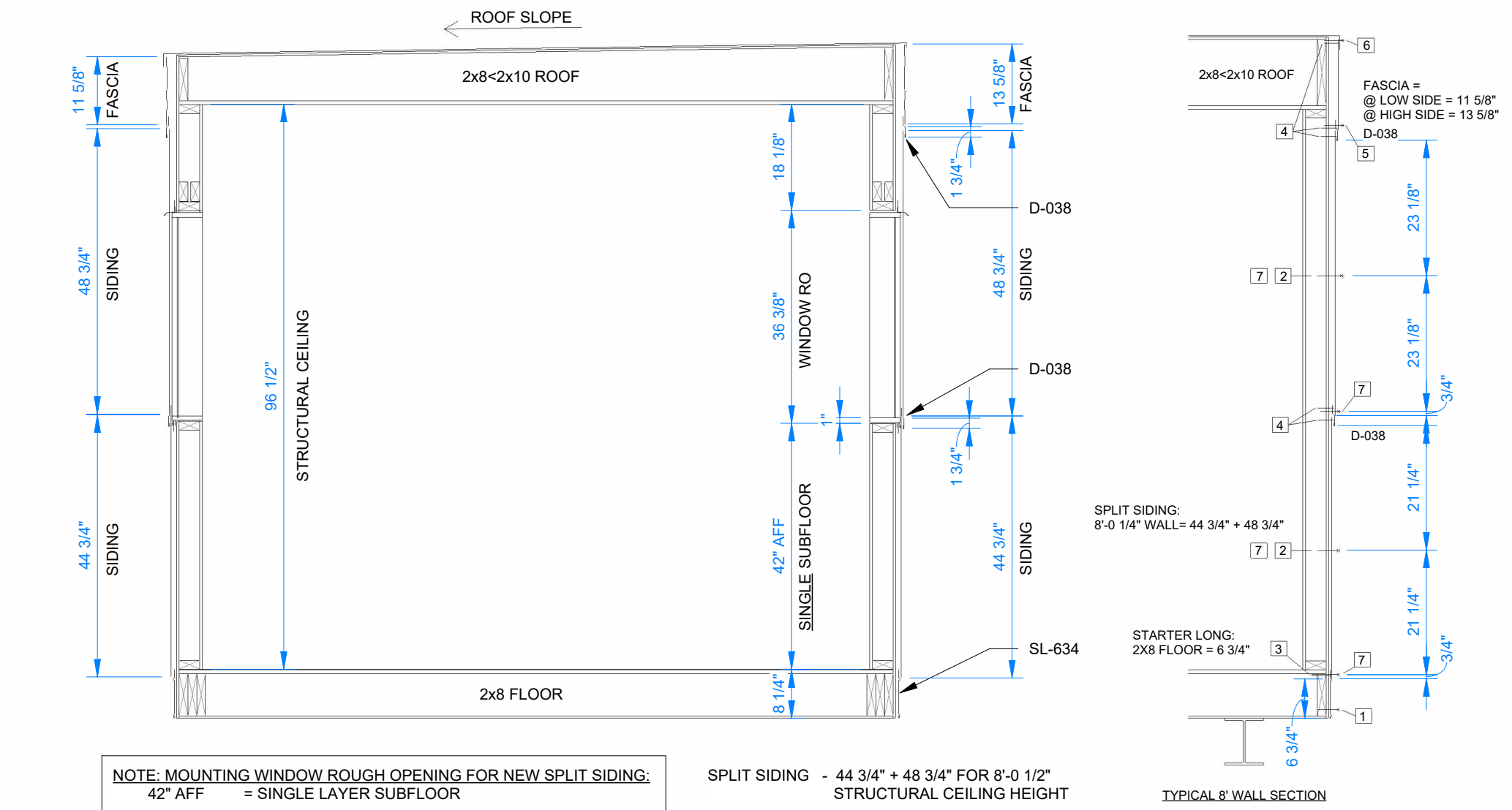
ATCO

FOR CONSTRUCTION

0	2025-08-13	ISSUED FOR CONSTRUCTION	DK	CM
A	2025-08-05	ISSUED FOR 90% REVIEW	DK	
REV.	DATE	DESCRIPTION	BY	CHK/APR

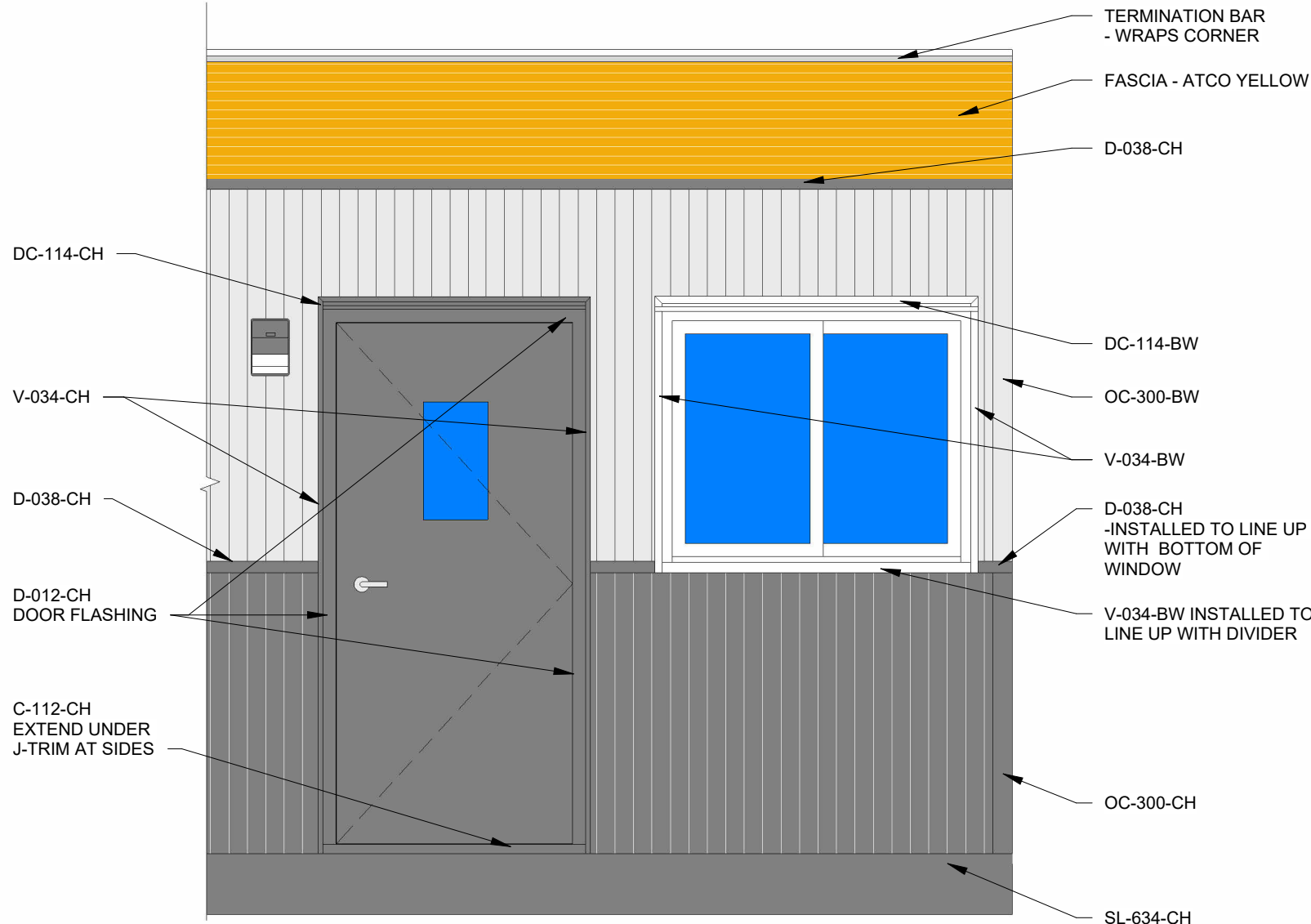
CLIENT: ATCO STRUCTURES

PROJECT NO:	DRAWING NO:	REV. #
1127059	AM500	0

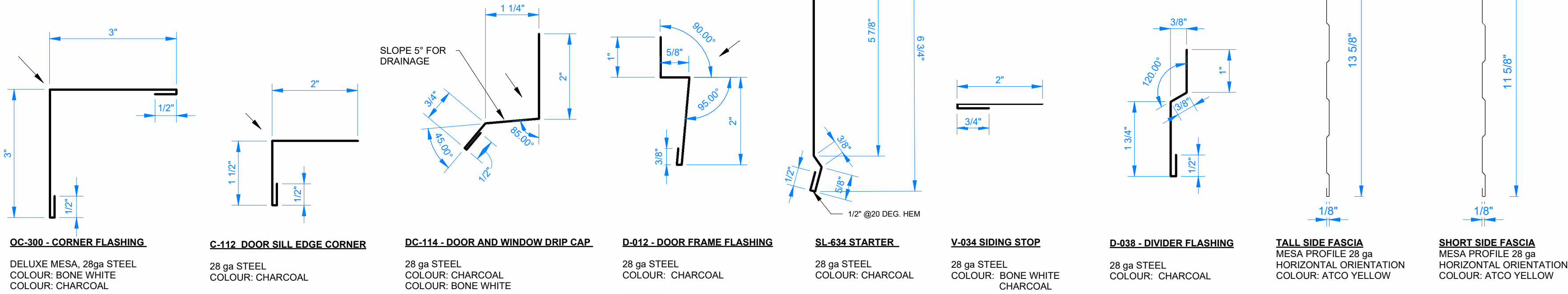


1 SI-2701 SPLIT SIDING SECTION
1/2" = 1'-0"

- FASTENING SCHEDULE:
- 1 SCREW STARTER @ 16" OC #10x1" MASTER GRIPPER
 - 2 STAPLE S-LOCK TAB @ 6" OC 3/16"x5/8" TO SHING
 - 3 STAPLE STARTER @ 32" OC 3/16"x5/8" TO SHING
 - 4 STAPLE MESA DIVIDER @ 8" OC 3/16"x5/8" TO SHING
 - 5 SCREW FASCIA @ 8-14" OC #10x1" MASTER GRIPPER
 - 6 #10 x 1-1/2" WOOD SCREW, [5] OC, ON TERMINATION BAR, GALVINIZED FINISH
 - 7 SCREW MESA @ 8-14" OC #10x1" MASTER GRIPPER



2 DOOR AND WINDOW TRIM
1/2" = 1'-0"



3 FLASHING PROFILES
6" = 1'-0"

4 FASCIA PROFILES
3" = 1'-0"

FLASHING PROFILE NAME CONVENTION

X - ### - CC

'X': TYPE OF PROFILE	'###' SIZE	'CC' COLOUR (OPTIONAL)
D - DIVIDER	IN FRATIONAL INCHES	BW - BONE WHITE
DC - DRIP CAP	SIMPLIFIED:	CH - CHARCOAL
S - STARTER FLASHING		AY - ATCO YELLOW
SL - STARTER, LONG	1/4" = 034	
SR - STARTER (FOR RUB RAILS)	3/4" = 058	
J - J-TRIM	1 1/2" = 114	
JW - J-TRIM, WIDE	2" = 200	
OC - OUTSIDE CORNER	3" = 300	
C - SILL OR ROOF CORNER	11 1/2" = 1112	
V - SIDING STOP		

EXTERIOR FINISH SCHEDULE

SKIRTING	FASCIA DIVIDER	FASCIA	STARTER FLASHING	DIVIDER FLASHING	UPPER SIDING	LOWER SIDING	DRIP CAP/ FLASHING	DOOR/ FRAME	SIDING STOP
28 GA. MESA - CHARCOAL (QC 18306)	28 GA. MESA - CHARCOAL (QC 18306)	28 GA. MESA - ATCO YELLOW (PANTON 130C)	28 GA. MESA - CHARCOAL (QC 18306)	28 GA. MESA - CHARCOAL (QC 18306) ATCO YELLOW (PANTON 130C)	28 GA. MESA - BONE WHITE (QC 18273)	28 GA. MESA - CHARCOAL (QC 18306)	28 GA. MESA - BONE WHITE (QC 18273) CHARCOAL (QC 18306)	CHARCOAL (QC 18306)	28 GA. MESA - BONE WHITE (QC 18273) CHARCOAL (QC 18306)



©2025 ATCO STRUCTURES & LOGISTICS LTD.
ALL RIGHTS RESERVED THESE DRAWINGS
CONTAIN CONFIDENTIAL INFORMATION AND ARE
THE PROPERTY OF ATCO STRUCTURES &
LOGISTICS LTD. THEY SHALL BE HELD IN
STRICTEST CONFIDENCE AND CANNOT BE
USED, COPIED, REPRODUCED DISCLOSED,
PUBLISHED, DISTRIBUTED OR OTHERWISE
EXPLOITED, IN ANY FORM OR MANNER, IN
WHOLE OR IN PART, FOR ANY REASON OTHER
THAN THE REASON FOR WHICH THEY WERE
PROVIDED TO YOU BY ATCO STRUCTURES &
LOGISTICS LTD., WITHOUT EXPRESSED
WRITTEN CONSENT OF ATCO STRUCTURES &
LOGISTICS LTD.
24X36 SHEET - DO NOT PRINT TO OTHER SCALE.

FOR CONSTRUCTION

0	2025-08-13	ISSUED FOR CONSTRUCTION	DK	CM	
A	2025-08-05	ISSUED FOR 90% REVIEW	DK		
REV.	DATE	DESCRIPTION	BY	CHK/APR	

PROJECT:		DRAWING TITLE:		
12x40 WHEELED OFFICE ONTARIO FLEET		BUILDING ENVELOPE DETAILS		
CLIENT:		PROJECT NO:	DRAWING NO:	REV. #
ATCO STRUCTURES		1127059	AM501	0

DRAWING LIST - ELECTRICAL MANUFACTURING	
SHEET NUMBER	SHEET NAME
EM001	ELECTRICAL DRAWING LIST & GENERAL INFORMATION
EM101	OVERALL POWER & DATA PLAN - LEVEL 1
Grand total: 2	

GENERAL ELECTRICAL NOTES:

1. ALL WIRE SHALL BE MIN OF #14 AWG, UNLESS OTHERWISE SPECIFIED.

2. ALL WIRING MUST CONFORM TO CEC 2024 (C22.1-24).

3. ALL ELECTRICAL DEVICES ARE TO BE WHITE IN COLOUR.

4. ALL DIMENSIONS ARE APPROXIMATE, UNLESS OTHERWISE SPECIFIED.

5. LOCATION OF ELECTRICAL DEVICES ARE APPROXIMATE, UNLESS OTHERWISE SPECIFIED.

6. ALL MOUNTING HEIGHTS ARE ABOVE FINISHED FLOOR (AFF), UNLESS OTHERWISE SPECIFIED.

7. ALL RECEPTACLE, SWITCH, AND JUNCTION BOX COVER PLATES SHALL BE LABELED WITH WHITE LABELS C/W BLACK LETTERING AND SHALL IDENTIFY THE PANEL NAME AND CIRCUIT BREAKER NUMBER.

8. ALL ELECTRICAL COMPONENTS SHALL CONFORM WITH CSA CERTIFICATIONS AND BEAR CSA LABELS.

9. WHERE DEVICE RELOCATION IS REQUIRED DUE TO CONFLICTS WITH OTHER DEVICES AND/OR EQUIPMENT, THE ELECTRICAL CONTRACTOR SHALL INSTALL THE DEVICES UP TO 1M3 FEET FROM ORIGINAL LOCATION WITHOUT APPROVAL FROM THE ENGINEER. THE ELECTRICAL CONTRACTOR SHALL PROVIDE ALL REDLINE DRAWINGS TO ATCO ENGINEERING UPON COMPLETION OF MANUFACTURING.

10. WHERE A DEVICE IS SPECIFIED WITH AN EXACT MODEL NUMBER AND AN ALTERNATE IS PROVIDED, ENGINEERING MUST BE NOTIFIED AND THE ALTERNATE DEVICES MUST BE APPROVED PRIOR TO INSTALLATION.

LIGHTING NOTES:

1. REFER TO LUMINAIRE SCHEDULE FOR LIGHT FIXTURE TYPES.

2. ALL WIRE SHALL BE #12 AWG FOR EMERGENCY REMOTE HEADS.

3. DISCONNECT LEADS OF THE EMERGENCY BATTERY PACKS FROM BATTERY TERMINALS PRIOR TO SHIPPING. ONCE ON SITE, RECONNECT LEADS, CHARGE FOR TWENTY-FOUR (24) HOURS THEN TEST ALL EMERGENCY/EXIT LIGHT BATTERIES FOR 30 MINUTES.

POWER NOTES:

1. TELEPHONE/DATA OUTLETS SHALL HAVE 3/4" EMT CONDUIT STUBBED UP TO ABOVE DROPPED CEILING COMPLETE WITH PLASTIC BUSHING AND PULL STRING. METALLIC DEVICE BOXES USED FOR TELEPHONE/DATA TO BE BONDED TO NEAREST RECEPTACLE.

2. ALL BASEBOARD HEATER THERMOSTAT WIRES SHALL BE LINE VOLTAGE WITH THE CORRECT AMPACITY FOR THE DEVICE SERVED.

3. ALL THERMOSTAT AND HVAC CONTROL WIRING TO BE CONNECTED AS PER MANUFACTURING SPECIFICATIONS.

4. ALL ELECTRIC RESISTANCE SPACE HEATERS SHALL BE CONTROLLED BY INDEPENDENT THERMOSTATS LOCATED IN THE SPACE AS PER CAN/CSA-C828.

5. HEAT TRACE PROVISION IS AN EMT STUB DOWN FROM MAIN ELECTRICAL PANEL AND PROVISIONAL 30 MILLIAMP RATED GFCI BREAKER INSTALLED IN THE ELECTRICAL PANEL.

6. REFER TO MECHANICAL DRAWINGS FOR EXACT LOCATIONS AND MOUNTING HEIGHTS OF ALL MECHANICAL EQUIPMENT PRIOR TO INSTALLATION.

7. ALL ELECTRICAL MATERIAL AND INSTALLATIONS SHOWN AND/OF SPECIFIED SHALL BE INSTALLED AS PER THE MANUFACTURER'S RECOMMENDATIONS AND SHALL COMPLY IN STRICT ACCORDANCE WITH THE LATEST EDITION OF CSA STANDARDS AND THE CEC (C22.1-24).

PANELBOARD NOTES:

1. PANELBOARDS SHALL BE COMPLETE WITH PANEL SCHEDULES, ARC FLASH STICKERS.

2. MAIN SERVICE CONNECTION TO MAIN PANELBOARD TO BE COMPLETED ON SITE (BY OTHERS).

LIGHTING SYMBOL LEGEND		
SYMBOL	DESCRIPTION	MOUNTING HEIGHT
	LIGHT SWITCH	48" AFF TO CENTRE, UNLESS OTHERWISE SPECIFIED
	UNIVERSAL RUNNING MAN EXIT SIGN	84" AFF TO CENTRE, UNLESS OTHERWISE SPECIFIED
	EMERGENCY LIGHT BATTERY UNIT	84" AFF TO TOP, UNLESS OTHER WISE SPECIFIED
	EMERGENCY LIGHT DOUBLE REMOTE HEAD	84" AFF TO CENTRE, UNLESS OTHERWISE SPECIFIED
	EXTERIOR LIGHT FIXTURE	77" AFF TO WIRE STUB OUT, UNLESS OTHERWISE SPECIFIED
	CEILING MOUNTED FIXTURE	
	WALL SCONCE FIXTURE	84" AFF TO CENTRE, UNLESS OTHERWISE SPECIFIED
	TROFFER FIXTURE	
	FIXTURE TYPE TAG - REFER TO LUMINAIRE SCHEDULE	N/A

POWER SYMBOL LEGEND		
SYMBOL	DESCRIPTION	MOUNTING HEIGHT
	5-15R, 120VAC, TAMPER-PROOF, DUPLEX RECEPTACLE	18" AFF TO CENTRE OF DEVICE BOX, UNLESS OTHERWISE SPECIFIED
	SPECIAL RECEPTACLE, REFER TO DRAWING FOR DETAILS	REFER TO DRAWING FOR DETAILS
	HARDWIRED ELECTRICAL CONNECTION TO EQUIPMENT	
	JUNCTION BOX, CONTAINING CIRCUIT FEEDS AS INDICATED	
	ELECTRICAL PANELBOARD, REFER TO PANEL SCHEDULE FOR SIZING, MODEL AND BREAKER LAYOUT. SURFACE MOUNTED.	60" AFF TO HIGHEST OVERCURRENT DEVICE
	120V 15A MOTOR RATED SWITCH	48" AFF TO CENTRE OF DEVICE BOX, UNLESS OTHERWISE SPECIFIED

FIRE ALARM SYMBOL LEGEND		
SYMBOL	DESCRIPTION	MOUNTING HEIGHT
	ISOLATION MODULE	84" AFF TO CENTRE, UNLESS OTHERWISE SPECIFIED
	MANUAL PULL STATION	42" AFF TO CENTRE, UNLESS OTHERWISE SPECIFIED
	MONITOR MODULE	
	CONTROL MODULE	
	SMOKE DETECTOR	
	HEAT DETECTOR	
	MINI HORN	90" AFF TO CENTRE, OR MIN 6" BELOW FCL TO TOP
	HORN / STROBE COMBO	78" AFF TO BOTTOM, UNLESS OTHERWISE SPECIFIED
	HORN STROBE COMBO	78" AFF TO BOTTOM, UNLESS OTHERWISE SPECIFIED
	END OF LINE RESISTOR	N/A

ELECTRICAL ABBREVIATIONS	
ABBREVIATION	DESCRIPTIONS
AFCI	ARC FAULT CIRCUIT INTERRUPTER
AFF	ABOVE FINISHED FLOOR
DP	DISTRIBUTION PANEL
FACP	FIRE ALARM CONTROL PANEL
GFCI	GROUND FAULT CIRCUIT INTERRUPTER
MCA	MINIMUM CIRCUIT AMPACITY
MCB	MAIN CIRCUIT BREAKER
MLO	MAIN LUG ONLY
MOCP	MAXIMUM OVERCURRENT CIRCUIT PROTECTION
MP	MAIN PANEL
SP	SUB PANEL
WP	WEATHER PROOF

CODE & DESIGN COMPLIANCE	
REFERENCE	
1.	NATIONAL BUILDING CODE 2023, PART 10
2.	CANADIAN ELECTRICAL CODE 2024 (C22.1-24)



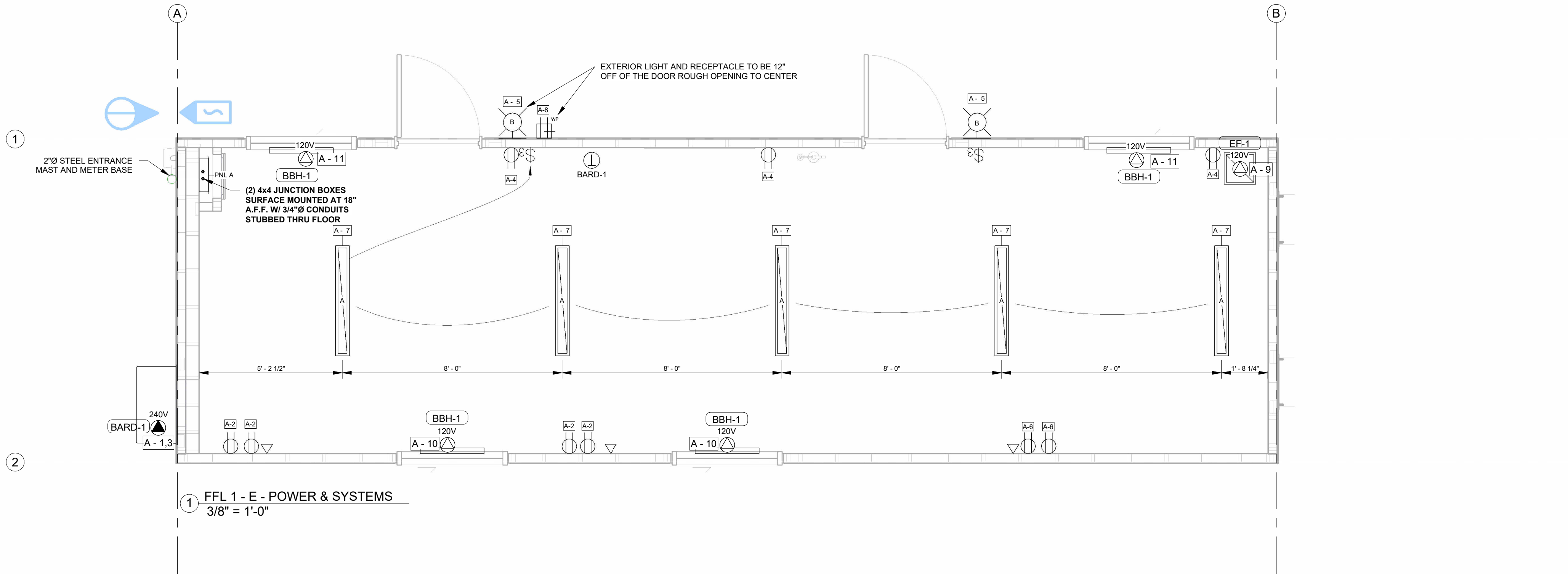
©2025 ATCO STRUCTURES & LOGISTICS LTD. ALL RIGHTS RESERVED. THESE DRAWINGS CONTAIN CONFIDENTIAL INFORMATION AND ARE THE PROPERTY OF ATCO STRUCTURES & LOGISTICS LTD. THEY SHALL BE HELD IN STRICTEST CONFIDENCE AND CANNOT BE USED, COPIED, REPRODUCED, DISCLOSED, PUBLISHED, DISTRIBUTED OR OTHERWISE EXPLOITED, IN ANY FORM OR MANNER, IN WHOLE OR IN PART, FOR ANY REASON OTHER THAN THE REASON FOR WHICH THEY WERE PROVIDED TO YOU BY ATCO STRUCTURES & LOGISTICS LTD., WITHOUT EXPRESSED WRITTEN CONSENT OF ATCO STRUCTURES & LOGISTICS LTD.

24X36 SHEET - DO NOT PRINT TO OTHER SCALE.

FOR CONSTRUCTION

0	2025-08-13	ISSUED FOR CONSTRUCTION	JW	CM	
A	2025-08-05	ISSUED FOR 90% REVIEW	JW		
REV.	DATE	DESCRIPTION	BY	CHK/APR	

PROJECT:		DRAWING TITLE:	
12x40 WHEELED OFFICE ONTARIO FLEET		ELECTRICAL DRAWING LIST & GENERAL INFORMATION	
CLIENT:		PROJECT NO:	DRAWING NO:
ATCO STRUCTURES		1127059	EM001
			REV. #
			0



ELECTRICAL EQUIPMENT SCHEDULE						
Panel Name	Manufacturer	Model	Bussing	# CCT's	Mounting	Description
A	EATON	CBRPM130		30	SURFACE MTD.	PANELBOARD - MAIN BREAKER - 120/240V - 1Ø 3W - 100A - 30 CCT's - AI BUS

ELECTRICAL DEVICE SCHEDULE						
DESCRIPTION	MANUFACTURER	MODEL	SYMBOL	TOTAL	A.F.F.L.	
RECEPTACLE - DUPLEX - 120V 15A - NEMA 5-15R - DECORA - COMMERCIAL - WHITE	LEVITON	S325-W		9	1' - 6"	
RECEPTACLE - DUPLEX - 120V 20A - NEMA 5-20R - GFCI - WHITE - C/W WEATHERPROOF BOX	LEVITON	GFNT2-W		1	1' - 6"	
THERMOSTAT				1	5' - 0"	

DATA DEVICE SCHEDULE				
NAME	SYM	TOTAL	COMMENTS	A.F.F.L.
LVT - DATA JACK (CAT 6) - SINGLE		3	ROUGH-IN ONLY. STUB 3/4\"/>	1' - 6"

LIGHTING DEVICE SCHEDULE					
DESCRIPTION	MANUFACTURER	MODEL	SYM	TOTAL	A.F.F.L.
SWITCH - 3 WAY - 120/277V - 15A - DECORA - COMMERCIAL - WHITE	LEVITON	5603-P2W		2	3' - 8"

LIGHT FIXTURE SCHEDULE						
LIGHT TYPE	DEVICE NAME	MANUFACTURER	MODEL NUMBER	IMAGE	TOTAL	A.F.F.L.
A	LIGHTING - 6"x48" CEILING MNTD SURFACE LED - 120V	RAB	SMW4N-LED48		5	
B	EXTERIOR WALL MOUNTED LED C/W PHOTOCELL	AIMLITE	W3I-L		2	7' - 0"

EXHAUST FAN SCHEDULE											
TAG	QTY	DESCRIPTION	MANUFACTURER	MODEL	E.S.P. ("W.C)	AIR FLOW (CFM)	SONES	OPERATION	AMPERAGE (A)	VOLTAGE (V)	PHASE
EF-1	1	EXHAUST FAN	ORTECH	OD-9005PB	0.1	90	0.5	W/ LIGHTING	0.21	120	1

BARD UNIT SCHEDULE											
TAG	QTY	MANUFACTURER	MODEL	SOURCE	HEATING INPUT/ OUTPUT	COOLING CAPACITY	SUPPLY AIR FLOW (CFM)	ELECTRICAL VOLTAGE (V)	PHASE	FREQUENCY (HZ)	REMARKS
BARD-1	1	Bard	W18AF-A10XP4XXE	ELECTRIC	10 kW	1.5 TON	600	230	1	60	INTERLOCK W/ BASEBOARD HEATERS TO PREVENT SIMULTANEOUS HEATING AND COOLING

BASEBOARD HEATER SCHEDULE							
TAG	QTY	MANUFACTURER	MODEL	HEATING CAPACITY (W)	ELECTRICAL VOLTAGE (V)	PHASE	A.F.F.L.
BBH-1	4	STELPRO	B0501	500	120	1	0' - 6"

Panel A											
Location:				Volts: 120/240 Single				Panel Model #: CBRPM130			
Unit #:				Phases: 1				Bus Rating: 100 A			
Supply From:				Wires: 3				MCB Rating: 100 A			
Mounting: SURFACE MTD.				Cable Size:				MLO Rating: N/A			
Enclosure:				Stub Requirements: 1 1/4" STUB				Est. Demand Load: 16 kW			
#	Circuit Description	Trip	Ø	A		B		Ø	Trip	Circuit Description	#
1	BARD UNIT (BARD-1)	60 A	2	5000 VA	1440 VA			1	15 A	RECEPTACLES	2
3						5000 VA	1080 VA	1	15 A	RECEPTACLES	4
5	EXTERIOR LIGHTS	15 A	1	28 VA	720 VA			1	15 A	RECEPTACLES	6
7	INTERIOR LIGHTS	15 A	1			190 VA	360 VA	1	20 A	EXTERIOR RECEPTACLE GFCI	8
9	EXHAUST FAN (EF-1)	15 A	1	25 VA	1000 VA			1	15 A	BASEBOARD HEATERS (BBH-1)	10
11	BASEBOARD HEATERS (BBH-1)	15 A	1			1000 VA					12
13											14
15											16
17											18
19											20
21											22
23											24
25											26
27											28
29											30
				A		B					
Total Load				8213 VA		7630 VA					
Total Amp				68.4 A		63.6 A					
TOTAL LOAD: 15843 VA											
TOTAL CURRENT: 66 A											



©2025 ATCO STRUCTURES & LOGISTICS LTD. ALL RIGHTS RESERVED. THESE DRAWINGS CONTAIN CONFIDENTIAL INFORMATION AND ARE THE PROPERTY OF ATCO STRUCTURES & LOGISTICS LTD. THEY SHALL BE HELD IN STRICTEST CONFIDENCE AND CANNOT BE USED, COPIED, REPRODUCED, DISCLOSED, PUBLISHED, DISTRIBUTED OR OTHERWISE EXPLOITED IN ANY FORM OR MANNER, IN WHOLE OR IN PART, FOR ANY REASON OTHER THAN THE REASON FOR WHICH THEY WERE PROVIDED TO YOU BY ATCO STRUCTURES & LOGISTICS LTD., WITHOUT EXPRESSED WRITTEN CONSENT OF ATCO STRUCTURES & LOGISTICS LTD.


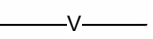


24X36 SHEET - DO NOT PRINT TO OTHER SCALE.

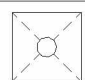
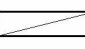
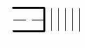

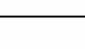
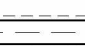
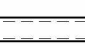


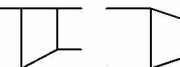
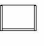
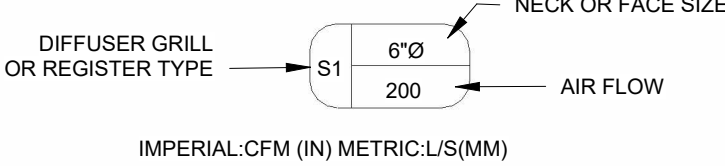
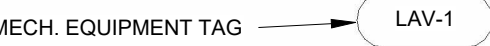
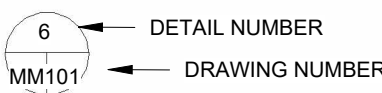
FOR CONSTRUCTION

0	2025-08-13	ISSUED FOR CONSTRUCTION	JW	CM	
A	2025-08-05	ISSUED FOR 90% REVIEW	JW		
REV.	DATE	DESCRIPTION	BY	CHK/APR	

PROJECT:				DRAWING TITLE:		
12x40 WHEELED OFFICE ONTARIO FLEET				OVERALL POWER & DATA PLAN - LEVEL 1		
CLIENT:				PROJECT NO:	DRAWING NO:	REV. #
ATCO STRUCTURES				1127059	EM101	0

DRAWING LIST - MECHANICAL MANUFACTURING	
SHEET NUMBER	SHEET NAME
MM001	MECHANICAL DRAWING LIST & GENERAL INFORMATION
MM101	OVERALL HVAC PLAN - LEVEL 1
Grand total: 2	

PLUMBING LEGEND	
SYMBOL	DESCRIPTION
	DRAINAGE PIPING
	VENT PIPING
	COLD WATER PIPING
	HOT WATER PIPING

MECHANICAL LEGEND	
SYMBOL	DESCRIPTION
	T-BAR CEILING DIFFUSER, NECK SIZE AS SHOWN.
	LAY-IN EGGRATE RETURN AIR GRILLE.
	FLEXIBLE DUCT, SIZE TO MATCH DIFFUSER NECK SIZE.
	DUCT TAKE-OFF CW BALANCING DAMPER, DUCT SIZE TO MATCH DIFFUSER NECK SIZE.
	SUPPLY/RETURN AIR GALV. DUCTWORK
	DUCT WITH EXTERNAL INSULATION
	DUCT WITH INTERNAL INSULATION / LINING
	WALL MOUNTED THERMOSTAT
	FIRE DAMPER
	DUCT REDUCERS, SIZES AS SHOWN.
	FIRE EXTINGUISHER
	
	
	

MECHANICAL ABBREVIATIONS	
ABBREVIATION	DEFINITION
AFF	ABOVE FINISHED FLOOR
AFR	ABOVE FINISHED ROOF
CWSR	CLOTHES WASHER
DCW	DOMESTIC COLD WATER
DHW	DOMESTIC HOT WATER
DHWR	DOMESTIC HOT WATER RECIRCULATION
DW	DISH WASHER
E/A	EXHAUST AIR
FD	FIRE DAMPER
FIM	FREE ISSUED MATERIAL
NFHB	NON-FREEZE HOSE BIBB
PL	REFRIGERANT PIPING LIQUID
PSPi	PLANT SUPPLIED PLANT INSTALLED
PSSi	PLANT SUPPLIED SITE INSTALLED
R/A	RETURN AIR
RS	REFRIGERANT PIPING SUCTION
S/A	SUPPLY AIR
SAN	SANITARY PIPING
SD	SMOKE DAMPER
SSSi	SITE SUPPLIED SITE INSTALLED
T/A	TRANSFER AIR
VENT	VENTING PIPING

BUILDING HEAT LOSS/GAIN:	
INTERIOR DESIGN TEMP: 22°C	
EXTERIOR WINTER TEMP: -21°C	
EXTERIOR SUMMER TEMP: 34°C	
DESIGN HEAT LOSS CALCULATED: 9,200 W	
HEATING OUTPUT: 12,000 W	



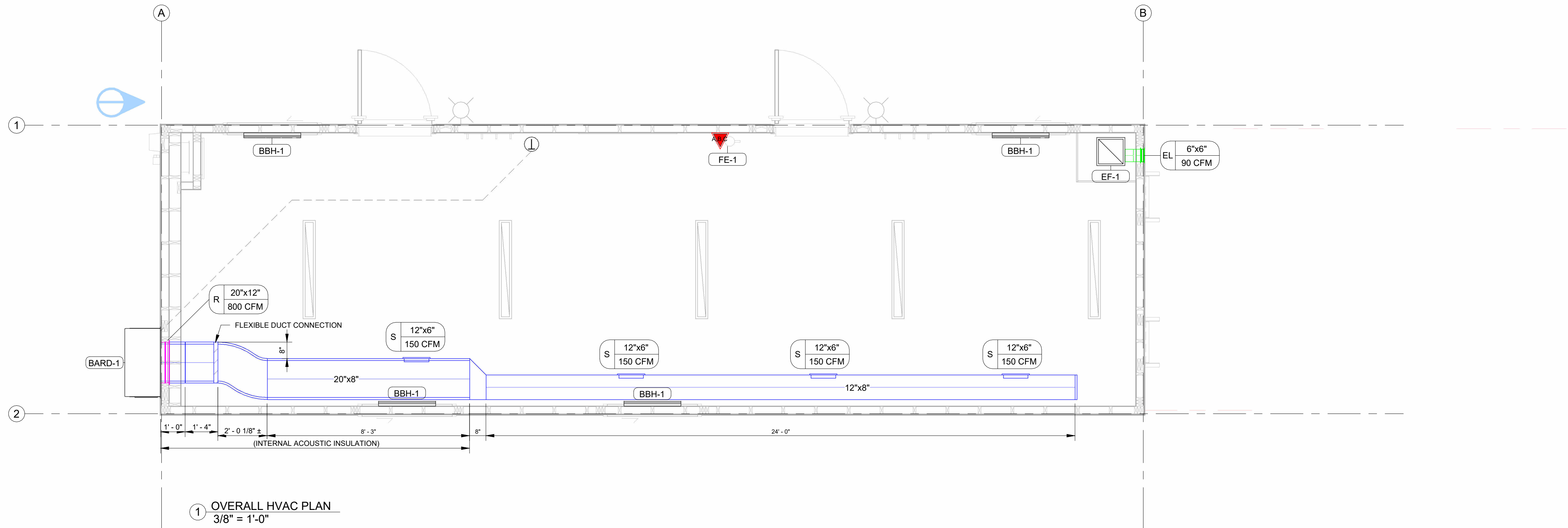
©2025 ATCO STRUCTURES & LOGISTICS LTD. ALL RIGHTS RESERVED THESE DRAWINGS CONTAIN CONFIDENTIAL INFORMATION AND ARE THE PROPERTY OF ATCO STRUCTURES & LOGISTICS LTD. THEY SHALL BE HELD IN STRICTEST CONFIDENCE AND CANNOT BE USED, COPIED, REPRODUCED DISCLOSED, PUBLISHED, DISTRIBUTED OR OTHERWISE EXPLOITED, IN ANY FORM OR MANNER, IN WHOLE OR IN PART, FOR ANY REASON OTHER THAN THE REASON FOR WHICH THEY WERE PROVIDED TO YOU BY ATCO STRUCTURES & LOGISTICS LTD., WITHOUT EXPRESSED WRITTEN CONSENT OF ATCO STRUCTURES & LOGISTICS LTD.

24X36 SHEET - DO NOT PRINT TO OTHER SCALE.

FOR CONSTRUCTION

0	2025-08-13	ISSUED FOR CONSTRUCTION	JW	CM	
A	2025-08-05	ISSUED FOR 90% REVIEW	JW		
REV.	DATE	DESCRIPTION	BY	CHK/APR	

PROJECT:		DRAWING TITLE:		
12x40 WHEELED OFFICE ONTARIO FLEET		MECHANICAL DRAWING LIST & GENERAL INFORMATION		
CLIENT:		PROJECT NO:	DRAWING NO:	REV. #
ATCO STRUCTURES		1127059	MM001	0



BARD UNIT SCHEDULE											
TAG	QTY.	MANUFACTURER	MODEL	SOURCE	HEATING INPUT/ OUTPUT	COOLING CAPACITY	SUPPLY AIR FLOW (CFM)	VOLTAGE (V)	ELECTRICAL PHASE	FREQUENCY (HZ)	REMARKS
BARD-1	1	Bard	W18AF-A10XP4XXE	ELECTRIC	10 kW	1.5 TON	600	230	1	60	INTERLOCK W/ BASEBOARD HEATERS TO PREVENT SIMULTANEOUS HEATING AND COOLING

EXHAUST FAN SCHEDULE											
TAG	QTY.	DESCRIPTION	MANUFACTURER	MODEL	E.S.P. ("W.G.)	AIR FLOW (CFM)	SONES	OPERATION	AMPERAGE (A)	VOLTAGE (V)	REMARKS
EF-1	1	EXHAUST FAN	ORTECH	OD-9005PB	0.1	90	0.5	W/ LIGHTING	0.21	120	

BASEBOARD HEATER SCHEDULE						
TAG	QTY.	MANUFACTURER	MODEL	HEATING CAPACITY (W)	ELECTRICAL VOLTAGE (V)	REMARKS
BBH-1	4	STELPRO	B0501	500	120	C/W BUILT-IN THERMOSTAT

AIR TERMINAL SCHEDULE					
TYPE MARK	SIZE	MANUFACTURER	MODEL	COUNT	DESCRIPTION
EL	6"x6"	IMPERIAL	VT0737 OR =	1	6X6 EXHAUST LOUVRE C/W BACKDRAFT DAMPER
R	20"x12"	PRICE	510Z	1	RETURN REGISTER
S	12"x6"	DAYUS	DAHVD	4	DOUBLE DEFLECTION, OPPOSED BLADE DAMPER

FIRE EXTINGUISHER SCHEDULE				
TAG	QTY.	DESCRIPTION	REMARKS	COMMENTS
FE-1	1	5 LB. ABC (2A:10BC)	C/W WALL MOUNT BRACKET	BY OTHERS



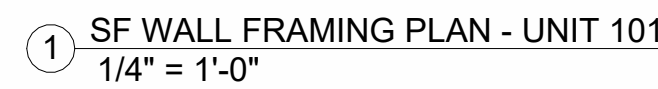
©2025 ATCO STRUCTURES & LOGISTICS LTD. ALL RIGHTS RESERVED THESE DRAWINGS CONTAIN CONFIDENTIAL INFORMATION AND ARE THE PROPERTY OF ATCO STRUCTURES & LOGISTICS LTD. THEY SHALL BE HELD IN STRICTEST CONFIDENCE AND CANNOT BE USED, COPIED, REPRODUCED DISCLOSED, PUBLISHED, DISTRIBUTED OR OTHERWISE EXPLOITED, IN ANY FORM OR MANNER, IN WHOLE OR IN PART, FOR ANY REASON OTHER THAN THE REASON FOR WHICH THEY WERE PROVIDED TO YOU BY ATCO STRUCTURES & LOGISTICS LTD., WITHOUT EXPRESSED WRITTEN CONSENT OF ATCO STRUCTURES & LOGISTICS LTD.

24X36 SHEET - DO NOT PRINT TO OTHER SCALE.

FOR CONSTRUCTION

0	2025-08-13	ISSUED FOR CONSTRUCTION	JW	CM	
A	2025-08-05	ISSUED FOR 90% REVIEW	JW		
REV.	DATE	DESCRIPTION	BY	CHK/APR	

PROJECT:		DRAWING TITLE:		
12x40 WHEELED OFFICE ONTARIO FLEET		OVERALL HVAC PLAN - LEVEL 1		
CLIENT:		PROJECT NO:	DRAWING NO:	REV. #
ATCO STRUCTURES		1127059	MM101	0



UNIT 101 FRAMED WALLS	
	Mark
SF101-01	
SF101-02	
SF101-03	
SF101-04	
SF101-05	
SF101-06	

WALL FRAMING UNIT 101	
SHEET NUMBER	SHEET NAME
SF101	WALL FRAMING PLAN & WALLS - UNIT 101
SF102	WALL FRAMING - UNIT 101
Grand total: 2	

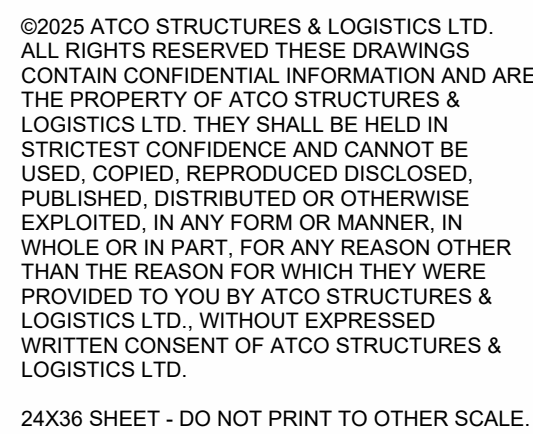
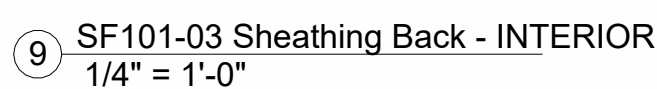
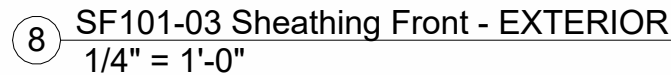
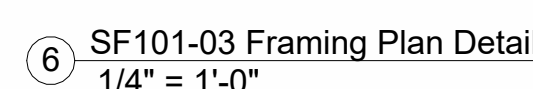
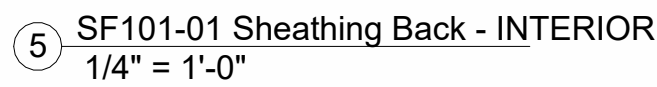
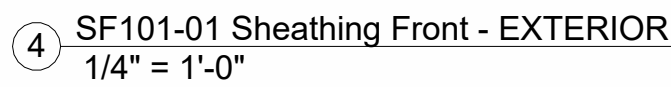
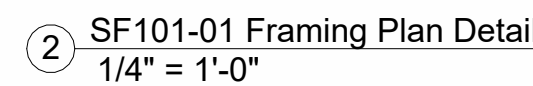
WALL FINISH SCHEDULE - UNIT 101	
ROOM	WALL FINISH
OPEN OFFICE	1/4" VINYL COVERED LUAN BOARD COLOUR: OAKPLY ATOMIC GRANIT C/W MATCHING BATTENS

E01
EXTERIOR SIDE
METAL CLADDING - MESA 1/8" PROFILE
WRB COMMERCIAL, AIR BARRIER
PLYWOOD SHEATHING - 3/8" SE
3 1/2" FIBREGLASS BATT INSULATION - R12
WOOD STUD - 2x4, 16" O/C
POLY VAPOUR & AIR BARRIER - 6 MIL
1/4" VINYL COVERED LUAN PANEL

SF101-03 Frame					
Framing Member	FM SortMark	Count	Cut Length	Type	
SF101-03					
Blocking	BL-1	4	1'- 2 1/2"	LMBR 2x6	
Blocking	BL-2	1	1'- 2"	LMBR 2x6	
Blocking	BL-3	2	0'- 6 1/4"	LMBR 2x6	
Bottom Cripple	BC-1	5	3'- 2 1/2"	LMBR 2x4 1	
Bottom Plate	BP-1	1	40'- 0"	LMBR 2x4	
Bottom Trimmer	BT-1	4	3'- 2 1/2"	LMBR 2x4 1	
Header	HP-1	2	4'- 4"	LMBR 2x4	
Header	HP-2	4	4'- 4"	LMBR 2x6	
Ring Stud	RS-1	4	7'- 9 1/2"	LMBR 2x4	
L Connection Stud	LS-1	6	7'- 9 1/2"	LMBR 2x4	
Sill Plate	SP-1	2	4'- 1"	LMBR 2x4	
Stud	VS-1	22	7'- 9 1/2"	LMBR 2x4 1	
Top Cripple	TC-1	5	0'- 10 1/2"	LMBR 2x4 1	
Top Plate	TP-1	1	40'- 0"	LMBR 2x4	
Top Trimmer	TT-1	8	7'- 9 1/2"	LMBR 2x4 1	
Trimmer	TS-1	4	6'- 5"	LMBR 2x4 1	

E01
EXTERIOR SIDE
METAL CLADDING - MESA 1/8" PROFILE
WRB COMMERCIAL, AIR BARRIER
PLYWOOD SHEATHING - 3/8" SE
3 1/2" FIBREGLASS BATT INSULATION - R12
WOOD STUD - 2x4, 16" O/C
POLY VAPOUR & AIR BARRIER - 6 MIL
1/4" VINYL COVERED LUAN PANEL

NAILING PATTERN:
2 1/2" x 0.131" NAILS
@ 6"/12" (EDGE/FIELD)

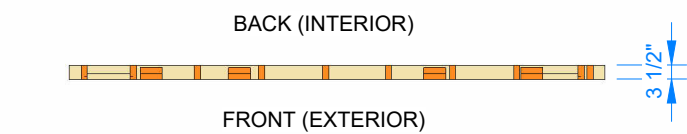


FOR CONSTRUCTION

0	2025-08-13	ISSUED FOR CONSTRUCTION	DK	CM
A	2025-08-05	ISSUED FOR 90% REVIEW	DK	
REV.	DATE	DESCRIPTION	BY	CHK/APR

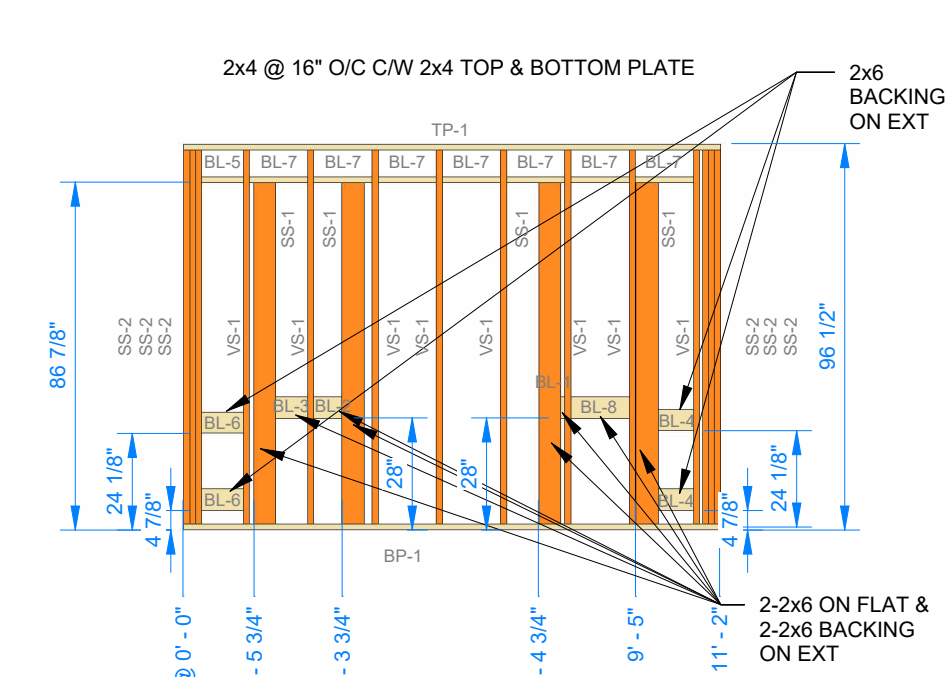
CLIENT: ATCO STRUCTURES

PROJECT NO:	DRAWING NO:	REV. #
1127059	SF101	0

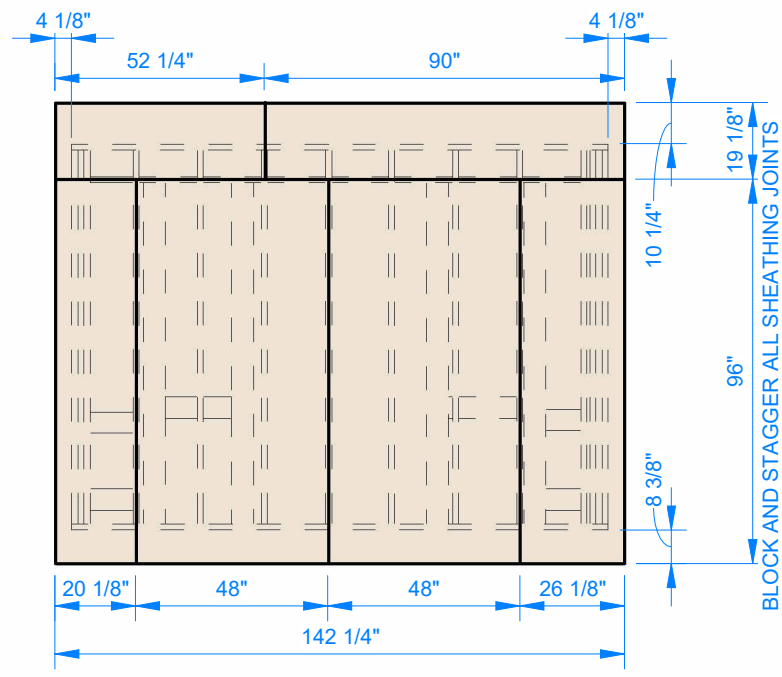


① SF101-02 Framing Plan Detail
1/4" = 1'-0"

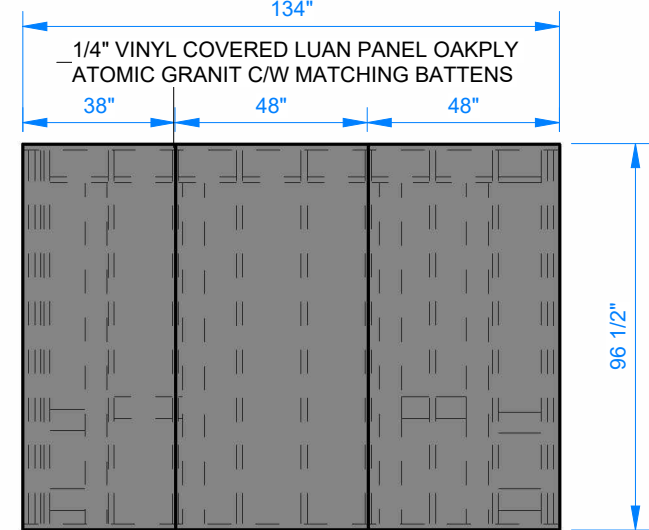
E01
EXTERIOR SIDE
METAL CLADDING - MESA 1/8" PROFILE
WRB COMMERCIAL AIR BARRIER
PLYWOOD SHEATHING - 3/8" SE
3 1/2" FIBREGLASS BATT INSULATION - R12
WOOD STUD - 2x4, 16" O/C
POLY VAPOUR & AIR BARRIER - 6 MIL
1/4" VINYL COVERED LUAN PANEL



② SF101-02 Frame Front - EXTERIOR
1/4" = 1'-0"



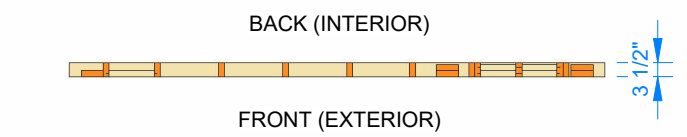
③ SF101-02 Sheathing Front - EXTERIOR
1/4" = 1'-0"



④ SF101-02 Sheathing Back - INTERIOR
1/4" = 1'-0"

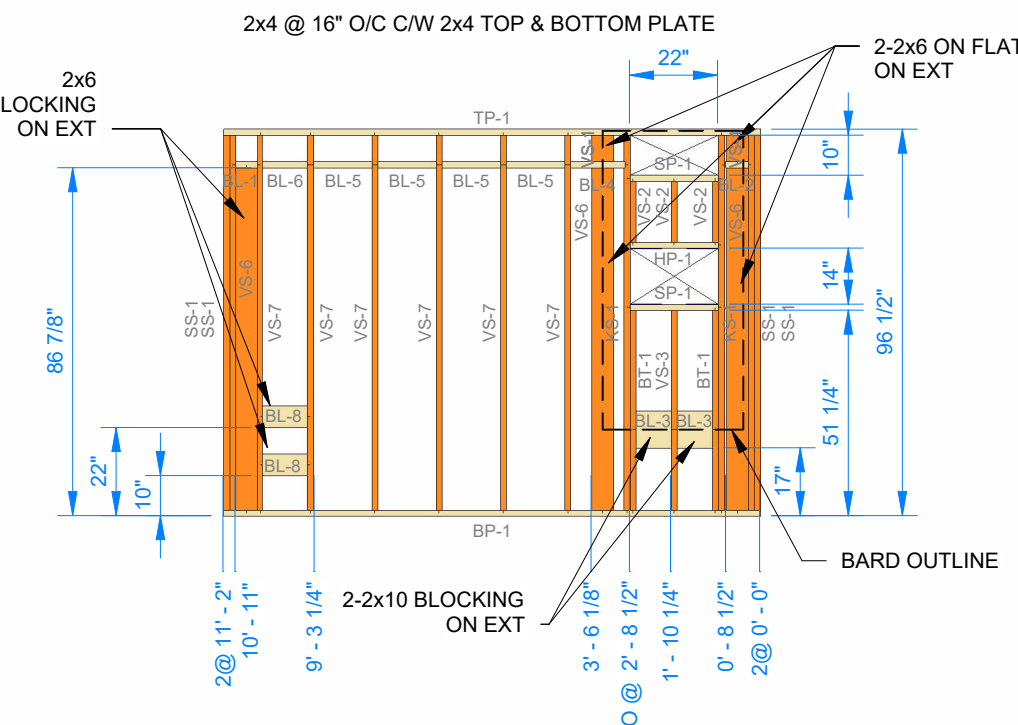
SF101-02 Frame				
Framing Member	FM SortMark	Count	Cut Length	Type
SF101-02				
Blocking	BL-1	2	0' - 1"	LMBR 2x6
Blocking	BL-2	2	0' - 7"	LMBR 2x6
Blocking	BL-3	2	0' - 8"	LMBR 2x6
Blocking	BL-4	2	0' - 8 3/4"	LMBR 2x6
Blocking	BL-5	1	0' - 10 3/4"	LMBR 2x4
Blocking	BL-6	2	0' - 10 3/4"	LMBR 2x6
Blocking	BL-7	7	1' - 2 1/2"	LMBR 2x4
Blocking	BL-8	2	1' - 2 1/2"	LMBR 2x6
Bottom Plate	BP-1	1	11' - 2"	LMBR 2x4
Side Stud	SS-1	8	7' - 1 3/8"	LMBR 2x6
Side Stud	SS-2	6	7' - 9 1/2"	LMBR 2x4 1
Stud	VS-1	8	7' - 9 1/2"	LMBR 2x4 1
Top Plate	TP-1	1	11' - 2"	LMBR 2x4
44				

NAILING PATTERN:
2 1/2" x 0.131 NAILS
@ 3 7/12" (EDGE/FIELD)
C/W BLOCKING AT ALL
SHEATHING JOINTS

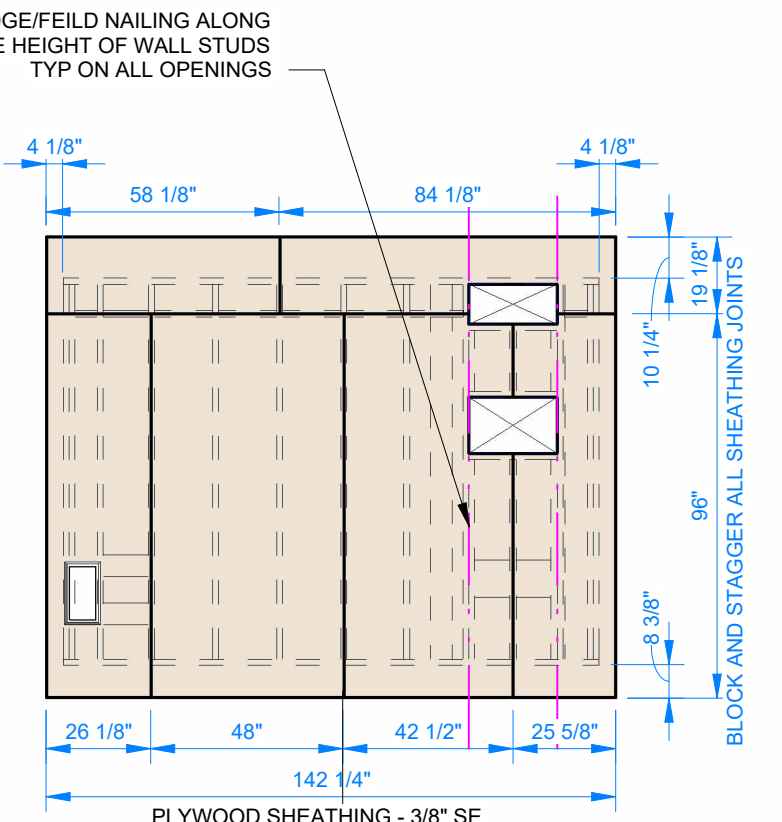


⑤ SF101-04 Framing Plan Detail
1/4" = 1'-0"

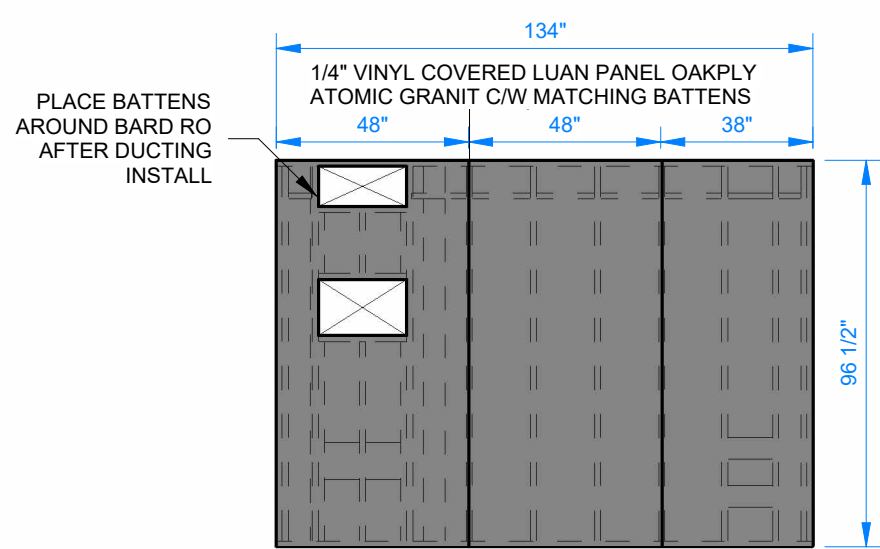
E01
EXTERIOR SIDE
METAL CLADDING - MESA 1/8" PROFILE
WRB COMMERCIAL AIR BARRIER
PLYWOOD SHEATHING - 3/8" SE
3 1/2" FIBREGLASS BATT INSULATION - R12
WOOD STUD - 2x4, 16" O/C
POLY VAPOUR & AIR BARRIER - 6 MIL
1/4" VINYL COVERED LUAN PANEL



⑥ SF101-04 Frame Front - EXTERIOR
1/4" = 1'-0"

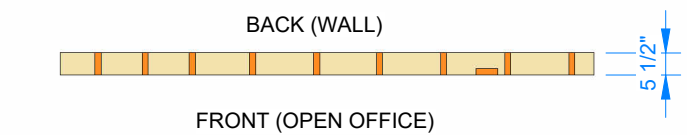


⑦ SF101-04 Sheathing Front - EXTERIOR
1/4" = 1'-0"



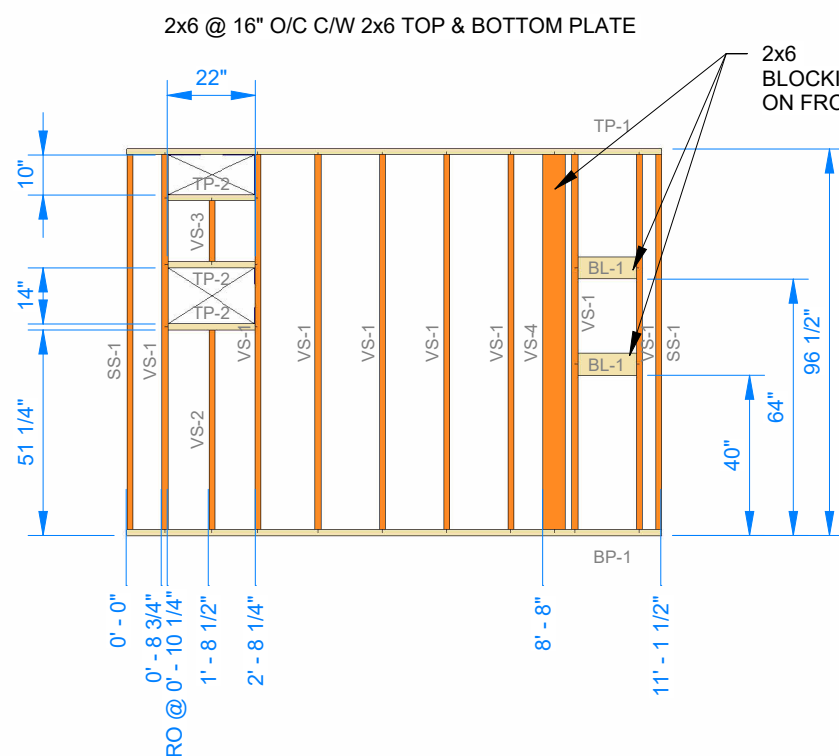
⑧ SF101-04 Sheathing Back - INTERIOR
1/4" = 1'-0"

SF101-04 Frame				
Framing Member	FM SortMark	Count	Cut Length	Type
SF101-04				
Blocking	BL-1	1	0' - 5 1/2"	LMBR 2x4
Blocking	BL-2	1	0' - 5 3/4"	LMBR 2x4
Blocking	BL-3	4	0' - 8 3/4"	LMBR 2x10
Blocking	BL-4	1	1' - 1 1/2"	LMBR 2x4
Blocking	BL-5	4	1' - 2 1/2"	LMBR 2x4
Blocking	BL-6	1	0' - 11 1/4"	LMBR 2x4
Blocking	BL-8	2	0' - 11 1/4"	LMBR 2x6
Bottom Plate	BP-1	1	11' - 2"	LMBR 2x4
Bottom Trimmer	BT-1	2	4' - 1 3/4"	LMBR 2x4 1
Header	HP-1	1	1' - 10"	LMBR 2x4
King Stud	KS-1	2	7' - 9 1/2"	LMBR 2x4 1
Side Stud	SS-1	4	7' - 9 1/2"	LMBR 2x4 1
Sill Plate	SP-1	2	1' - 10"	LMBR 2x4
Stud	VS-1	4	0' - 6 5/8"	LMBR 2x6
Stud	VS-2	3	1' - 3 1/4"	LMBR 2x4 1
Stud	VS-3	1	4' - 1 3/4"	LMBR 2x4 1
Stud	VS-6	5	7' - 1 3/8"	LMBR 2x6
Stud	VS-7	6	7' - 9 1/2"	LMBR 2x4 1
Top Plate	TP-1	1	11' - 2"	LMBR 2x4
46				

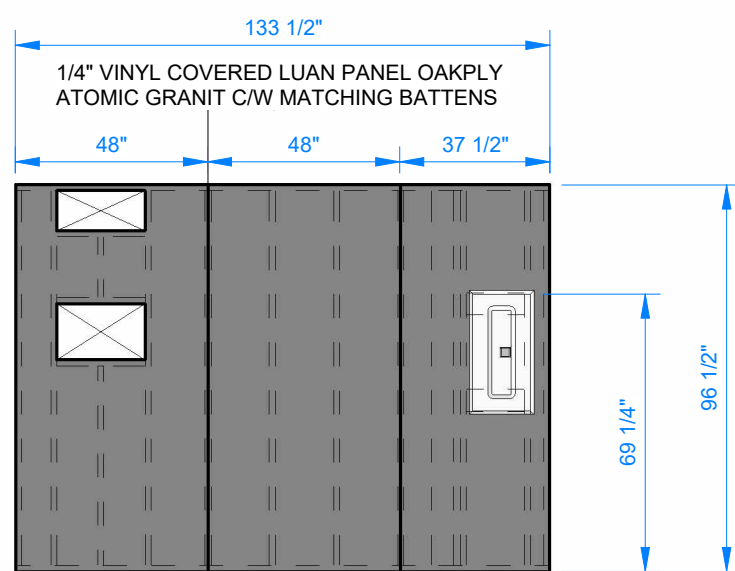


⑨ SF101-05 Framing Plan Detail
1/4" = 1'-0"

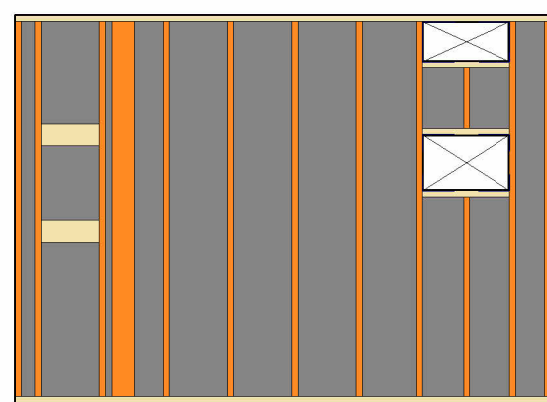
P01
INTERIOR 'A'
1/4" VINYL COVERED LUAN PANEL
WOOD STUD - 2x6, 16" O/C



⑩ SF101-05 Frame Front - OPEN OFFICE
1/4" = 1'-0"



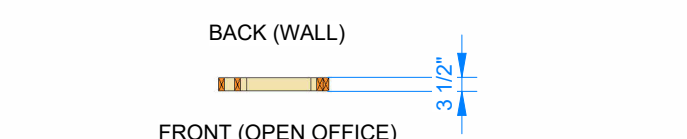
⑪ SF101-05 Sheathing Front - OPEN OFFICE
1/4" = 1'-0"



⑫ SF101-05 Sheathing Back - WALL
1/4" = 1'-0"

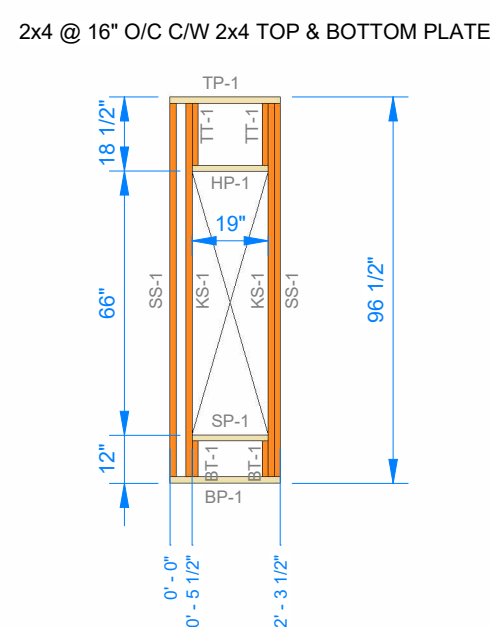
SF101-05 Frame				
Framing Member	FM SortMark	Count	Cut Length	Type
SF101-05				
Blocking	BL-1	2	1' - 2 1/2"	LMBR 2x6
Bottom Plate	BP-1	1	11' - 1 1/2"	LMBR 2x6
Side Stud	SS-1	2	7' - 9 1/2"	LMBR 2x6
Stud	VS-1	8	7' - 9 1/2"	LMBR 2x6
Stud	VS-2	1	4' - 1 3/4"	LMBR 2x6
Stud	VS-3	1	1' - 3 1/4"	LMBR 2x6
Stud	VS-4	1	7' - 9 1/2"	LMBR 2x6
Top Plate	TP-1	1	11' - 1 1/2"	LMBR 2x6
Top Plate	TP-2	3	1' - 10"	LMBR 2x6
20				

NO SHEATHING ON THIS SIDE

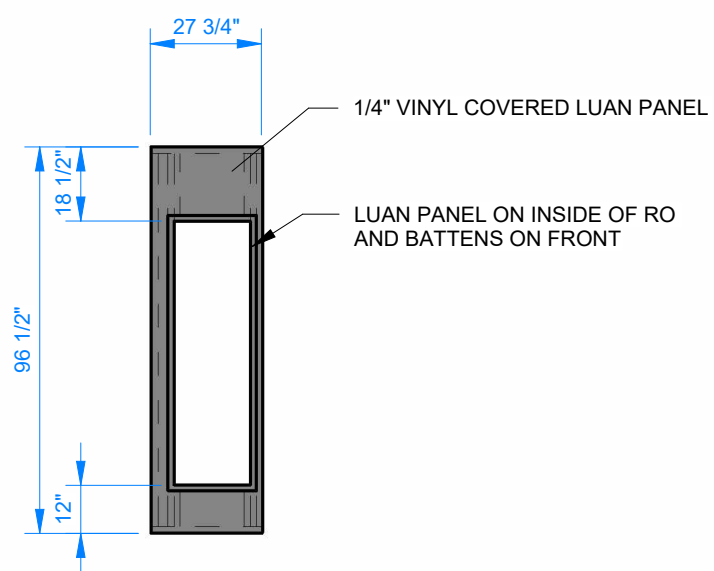


⑬ SF101-06 Framing Plan Detail
1/4" = 1'-0"

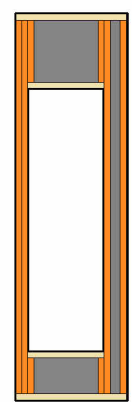
P02
INTERIOR 'A'
1/4" VINYL COVERED LUAN PANEL
WOOD STUD - 2x4, 16" O/C



⑭ SF101-06 - OPEN WORKSPACE
1/4" = 1'-0"



⑮ SF101-06 Sheathing Front - OPEN WORKSPACE
1/4" = 1'-0"



⑯ SF101-06 Sheathing Back - CLOSET
1/4" = 1'-0"

SF101-06				
Framing Member	FM SortMark	Count	Cut Length	Type
SF101-06				
Bottom Plate	BP-1	1	2' - 3 1/2"	LMBR 2x4
Bottom Trimmer	BT-1	2	0' - 9"	LMBR 2x4 1
Header	HP-1	1	1' - 7"	LMBR 2x4
King Stud	KS-1	2	7' - 9 1/2"	LMBR 2x4 1
L Connection Stud	SS-1	1	7' - 9 1/2"	LMBR 2x4 1
Side Stud	SS-1	3	7' - 9 1/2"	LMBR 2x4 1
Sill Plate	SP-1	1	1' - 7"	LMBR 2x4
Top Plate	TP-1	1	2' - 3 1/2"	LMBR 2x4
Top Trimmer	TT-1	2	1' - 3 1/2"	LMBR 2x4 1
12				

NO SHEATHING ON THIS SIDE

**NOTE: FOR ELECTRICAL EQUIPMENT MOUNTING HEIGHTS
AND LOCATIONS REFER TO ELECTRICAL DRAWINGS.
ELECTRICAL DRAWINGS SUPERSEDE THE INFORMATION
ON FRAMING PRINTS**

ATCO

©2025 ATCO STRUCTURES & LOGISTICS LTD.
ALL RIGHTS RESERVED THESE DRAWINGS
CONTAIN CONFIDENTIAL INFORMATION AND ARE
THE PROPERTY OF ATCO STRUCTURES &
LOGISTICS LTD. THEY SHALL BE HELD IN
STRICTEST CONFIDENCE AND CANNOT BE
USED, COPIED, REPRODUCED DISCLOSED,
PUBLISHED, DISTRIBUTED OR OTHERWISE
EXPLOITED IN ANY FORM OR MANNER, IN
WHOLE OR IN PART, FOR ANY REASON OTHER
THAN THE REASON FOR WHICH THEY WERE
PROVIDED TO YOU BY ATCO STRUCTURES &
LOGISTICS LTD., WITHOUT EXPRESSED
WRITTEN CONSENT OF ATCO STRUCTURES &
LOGISTICS LTD.
24X36 SHEET - DO NOT PRINT TO OTHER SCALE.

FOR CONSTRUCTION

REV.	DATE	DESCRIPTION	BY	CHK/APR
0	2025-08-13	ISSUED FOR CONSTRUCTION	DK	CM
A	2025-08-05	ISSUED FOR 90% REVIEW	DK	

PROJECT:		DRAWING TITLE:		
12x40 WHEELED OFFICE ONTARIO FLEET		WALL FRAMING - UNIT 101		
CLIENT:		PROJECT NO:	DRAWING NO:	REV. #
ATCO STRUCTURES		1127059	SF102	0