



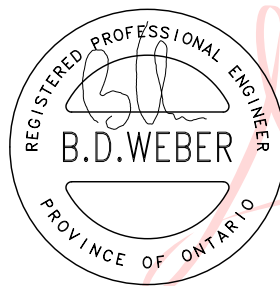
STANDARD ECF

SPECIFICATION

FOR

10' x 20' WHEELED LAVATORY

QUALITY SERIES



Digitally signed
by Brian Weber

Date:

2018.01.25

23:00:26 -05'00'

DATE:

ATCO STRUCTURES INC.
LA PRAIRIE, QUEBEC
January 1, 2007

PRECEDENCE OF SPECIFICATION

The following specifications will take precedence over the drawings.

CODE COMPLIANCE

The proposed building will be manufactured in accordance with the following code(s) and occupancy specified herein or as per specific design criteria identified on the cover sheet of the proposal / specification.

All changes required by federal, provincial, municipal and local authorities or due to proximity to existing building will be extra to this proposal.

Architectural	-	Canadian Building Code 1995
Electrical	-	Canadian Electrical Code 2002
Plumbing	-	Canadian Plumbing Code 1995

APPROVED EQUIPMENT

All mechanical equipment, electrical devices, fixtures and equipment is approved for use intended by C.S.A. and/or U.L.C.

COLOR MATCHING

ATCO shall not be held responsible for any discrepancies of color or pattern matching due to suppliers manufacturing tolerances.

ALTERNATE EQUIPMENT

ATCO reserves the right to make substitutions of material and equipment with material and equipment equal in quality due to delays in delivery or discontinued product lines. All equivalent materials or applications must first be approved by ATCO prior to manufacturer incorporating into finish product.

TOLERANCES

Maximum difference from one stud or joist to the next: $\pm 1/8"$

Maximum difference diagonally in roof, floor, or walls: $1/4"$

Maximum discrepancy in overall length, width or height: $\pm 1/8"$

Maximum misalignment on unit to unit openings: $1/8"$

Maximum difference diagonally in door and window openings: $1/8"$

All joists and studs to be leveled with the interior edges of framing structure

ARCHITECTURAL**STRUCTURAL**

Modular wood framed unit, fully erected in manufacturing facility.

DESIGN CRITERIA

Occupancy Group	-	Office
Live floor load	-	100 psf.
Live roof load	-	52 psf.
Structural ceiling height	-	8' 1/4"
Finished ceiling height	-	8' 1/4"
All lumber	-	kiln dried, SPF, #2 and better
Colors	-	as specified

FRAME

Type	-	G-40-21-44W steel main frame with outriggers designed for running gear installation
Longitudinal members	-	C6 x 8.2# steel channel at 75" o/c
Crossmembers	-	Front: (1) 6C x 8.2# steel channel
	-	Back: (1) 4C x 5.4# steel channel
	-	Internal: (4) 4C x 5.4# steel channel
	-	Outriggers: (8) 4C x 5.4# steel channel
A-Frame	-	bolt-on, 6C x 8.2# steel channel; complete with Marvel ball hitch 2 5/16"
	-	6000 lbs capacity adjustable parking leg 2 1/2" Ø Sch 40 steel pipe with 1/4" x 6" x 6" steel base plate and 1/2" Ø pin with 12" chain link welded to A-frame; provide drain hole at bottom of parking leg
Paint	-	tripod support with pin/seat box and tie-down anchor points
	-	frame, hitch, parking leg, and pin & seat box to be wire brushed, and painted one coat of Glass-Coat 400 corrosion resistant paint (or approved equivalent)
Running gear	-	tandem axle 14" rims; 75" track; 6,000 lb. capacity, electric brakes, backplates and slipper springs
	-	axle brackets installed with a spacer HSS 2" x 3" x 1/4"
	-	tires 8.00 x 14.5, 14-ply, 3090 lbs. capacity; Goodyear or approved equivalent

FLOORS

(from exterior to interior)

Undersheathing	-	1/4" aspenite panel, stapled
Joists & plates	-	2" x 6" at 16" o/c with double perimeter plates
Insulation	-	6" fiberglass batt (R-20)
Sub-floor	-	5/8" select tongue and groove plywood, glued, screwed and stapled. Note: plywood finish to be filled and sanded as required for floor covering application
Floor Covering	-	2.0 mm Polyflor XL, color # 9010 nougat, joints welded with matching cord
Floor Wax / Sealant	-	combination type Swish ES80 High Gloss Finish or approved equivalent; applied at factory to finished floor

WALLS

(from exterior to interior)

Finish	-	bottom starter strip, black color ID #1386, pre-finished embossed aluminum, 6 3/4", stapled and screwed
	-	30 gauge steel siding, bone white QC 8273, pre-finished, deluxe mesa profile MRD33, screwed and stapled
	-	top divider, black color ID #1386, pre-finished embossed aluminum, 2 3/4", stapled
	-	fascia, yellow color ID #3315, pre-finished embossed aluminum, 15 5/8" - 13 5/8", deluxe mesa profile MRD33, installed horizontally, stapled and screwed
	-	all siding fastened with pre-colored cap screws, rust and corrosion resistant
Sheathing	-	3/8" O.S.B., glued and stapled.
Studs and plates	-	2" x 4" at 16" o/c with single top and bottom plates
Special blocking:	-	on each side of exterior door for hinged landing support
	-	in rear endwall for stair and railing support bracket
	-	in rear endwall for road signal lighting kit support plates
Insulation	-	3 1/2" fiberglass (R12).
Vapor barrier	-	6 mil. polyethylene with all openings and joints taped
Sheathing	-	1/2" plywood stapled
Finish	-	ABTCO smooth PVC finish panel; white, with matching PVC battens over panel joints; all panel joints sealed prior to batten installation
Trim	-	base: 3" PVC colonial style, brown; wall/floor joint caulked prior to molding installation
		casing: 2" PVC colonial style, brown
		ceiling: 1" PVC flat, brown

PARTITION

Finish	-	ABTCO smooth PVC finish panel; white, with matching PVC battens over panel joints; all panel joints sealed prior to batten installation
Sheathing	-	1/2" plywood stapled
Studs and plates	-	2" x 4" at 16" o/c with single top and bottom plates
	-	frame doorway opening 32" x 80" for removable panel
Sheathing	-	1/2" plywood stapled
Finish	-	ABTCO smooth PVC finish panel; white, with matching PVC battens over panel joints; all panel joints sealed prior to batten installation
Trim	-	base: 3" PVC colonial style, brown; wall/floor joint caulked prior to molding installation
		casing: 2" PVC colonial style, brown
		ceiling: 1" PVC flat, brown

ROOF

(from exterior to interior)

Finish	-	47 mil., fully adhered, Dectec R12000 PVC membrane roofing, white, with splices running lengthwise, fully adhered; PVC termination bar c/w snap cap; corners should not be splices but wrapped around a minimum of 12"
Sheathing	-	1/2" plywood, glued, stapled and sanded
Joists and plates	-	2" x 8" sloped to 2" x 6" at 16" o/c with single perimeter plates
Insulation	-	6" (R20) to 8" (R28) fiberglass batt; cavity filled
Vapor barrier	-	6 mil. polyethylene with openings and joints taped
Finish	-	1/2" fireguard gypsum board, vinyl covered Snowdrift c/w matching vinyl covered battens over panel joints and rosettes at intermediate joists

DOORS

Exterior doors	-	(2) 36" x 80", metal insulated door, PVC or aluminum covered wood frame with handicap accessible sill, exterior face painted to match yellow fascia (Sico SM9769; base 977-404, semi-gloss latex) and interior face painted bone white; complete with aluminum frame and fixed thermo window 10" x 18"
Hardware	-	exterior drip caps (steel - bone white QC8273)
	-	(2) Kwikset Eclipse passage set (P/N 247130); components code 200Ex2994x3796, 20 min rating, C26D finish
	-	(2) Kwikset deadbolt with thumb latch (P/N 247185); components code 630x4504x5279; C26D finish; keyed to ATCO master (21222) and keyed differently; MK marked cylinder
	-	(2) Kwikset locksets and deadbolts provided by ATCO
	-	(2) vinyl covered check chain; heavy duty 25 1/2"
Trims	-	2" PVC colonial style, brown
Interior Removable Panel	-	32" x 80" plywood panel, painted to match brown PVC casing moldings (Sico SM9725, base 977-403, semi-gloss latex); leave 3" gap at the floor level and 2" gap at the opening header level for air circulation
Hardware	-	Aluminum channel jambs with non-corrosion screws into plywood panel
Trims	-	2" PVC colonial style, brown, around framed opening

WINDOWS

- None

FURNISHINGS AND EQUIPMENT

- (4) ATCO decals 6" x 22" (provided by ATCO)
- (2) Tel / Web signs decals 10" x 41" (provided by ATCO)
- (1) MBI sticker installed at bottom front corner above starter flashing (provided by ATCO)
- (1) unit Serial Number painted on frame front cross member at the right end; using 3" high numbers stencil
- (1) SAAQ registration plate (provided by ATCO)
- (2) 42" x 46" fold-up landing, with 2 handrails and 4 tread step 35"H; double step/rail support to be centered on back endwall; wire brush and painted one coat of Glass Coat 400 corrosion resistant paint (or approved equivalent)
- (6) steel adjustable tripods painted black; pin and nuts wire brushed and greased
- (4) 4" x 4" aluminum road signal light kit support plates with non-corrosion threaded studs, washers and lock washers; installed with top of upper plate at 38" from bottom of wood floor framing

MECHANICAL**DESIGN CRITERIA**

Temperature differential (heating)	- 60 degrees Celsius (110 degrees F.)
Temperature differential (cooling)	- 8 degrees Celsius (15 degrees F.)
Heating	- (2) forced air heaters 1500 watts
Cooling	- None
Control	- (2) integrated thermostats for forced air heaters
Supply Air	- indirect
Return Air	- (2) wall-mounted exhaust fans; switched

PLUMBING

Design Criteria	- maximum water supply pressure - 80 psi
Supply Lines	- all supply lines to be exposed
	- all fixtures to be installed with gate valves
	- copper pipe type "L" and fittings; male adapter at entry
	- cold water lines insulated
Drainage, Waste & Vent Piping	- drainage lines and fittings to be ABS
	- all drainage lines to be exposed
	- central floor drain
	- washroom fixture drain lines harnessed below floor of unit with female adapter and threaded metal pipe supports
Fixtures	- (5) water closets c/w reservoirs, lids, and open front seat
	- (2) wall-mounted urinals with flush valves
	- (4) washbasins c/w faucet sets, mounted in plastic laminate counter tops c/w backsplash and apron; beige to match PVC metal toilet partitions
Washroom Accessories	- (5) metal toilet stalls, beige finish, with doors and coat hooks
	- (2) metal urinal privacy screens, beige finish
	- (5) single roll toilet paper holders
	- (2) paper towel dispensers; folded sheets type
	- (2) liquid soap dispensers; push-button type
	- (4) 16" x 20" mirrors with clips and piece of Tremco tape on back side to hold in place during transportation

- | | | |
|--------------|---|--|
| Water Heater | - | (1) 20 gallon electric water heater, enclosed under counter top with hinged access panel |
|--------------|---|--|

ELECTRICAL**DESIGN CRITERIA**

- | | | |
|-----------------|---|---|
| Power supply | - | 120/240 volt AC, single phase, three wires, 60 Hertz. |
| Lighting levels | - | 60-70 foot candles (average). |
| Demand load | - | 3.6 kW estimated demand load. |

SERVICE ENTRANCE

- | | | |
|------|---|---|
| Type | - | main panel with circuit breakers; installed in full-height melamine enclosure with hinged door and access below with screws / snap cap covers |
| | - | pre-wired mast and meter base; with transportation support clips on underside of main building frame for mast |

DISTRIBUTION

- | | | |
|------------|---|--|
| Loadcenter | - | 100A – 24 CCT main distribution panel c/w door and main breaker sized for design load; branch circuit breakers as required; Square-D |
| Wiring | - | concealed, non-metallic, sheathed, copper cable, sized for circuit requirement; minimum #14 AWG conductors |
| Devices | - | all wiring must be concealed within wall/roof cavity. |
| | - | (2) 15A duplex receptacles; white |
| | - | (2) GFI, 15A duplex receptacles; white |
| | - | (1) WP 15A receptacle below floor for heat tracing cable; on independent circuit; installed close to water service entrance |
| | - | (2) exterior light switches |
| | - | (2) interior lights switches |
| | - | (2) exhaust fan switches |
| | - | all wiring devices - "Pass & Seymour" or equal |
| | - | all devices to be identified with circuit number |

LIGHTING

- | | | |
|--------------|---|---|
| Fluorescent | - | (4) two lamp, 48" long; diffusers with security clips and T8 cool white lamps |
| Incandescent | - | (2) exterior lighting fixtures, polished aluminum with glass globe ("Danbel"-#RWG100.or equal). |

COMMUNICATION

- | | | |
|------------------|---|------|
| Telephone / Data | - | None |
|------------------|---|------|

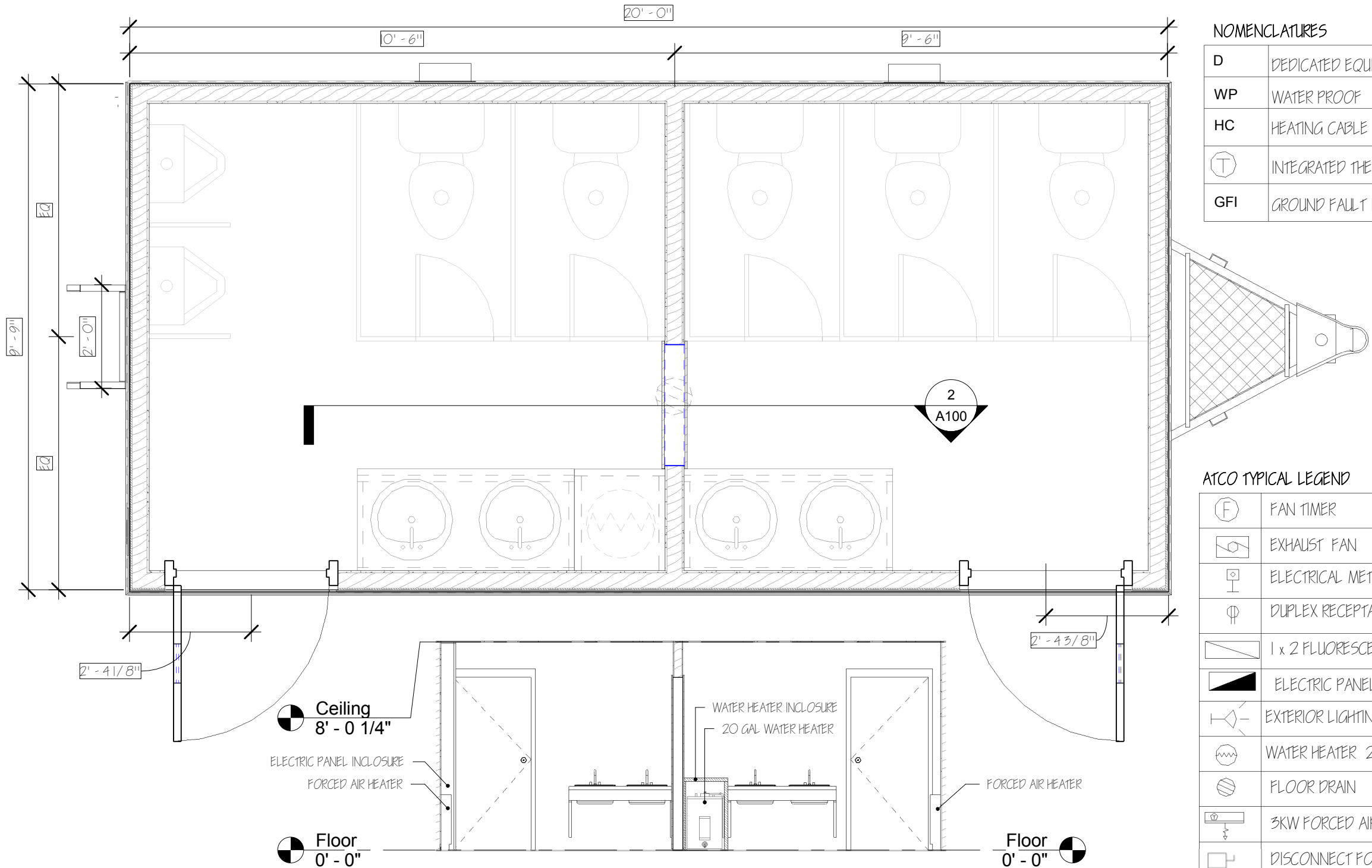
DRAWINGS

(to be reviewed with this specification)

- Floor Plan
- Production Plan
- Electrical Plan and Panel Schematic
- Typical Building Section
- Elevations
- Steel Building Frame (Wheeled)

ATCO Standards Details:

- Aluminum road signal light kit support plates
- Steel parking leg
- Tripod support
- Pin & seat box within A-Frame structure
- Hinged landing 35" high, stair 5 risers at 7", and handrail assembly
- Corporate identification labeling locations
- Front endwall labels locations
- Back endwall labels and road signal light plates locations



NOMENCLATURES	
D	DEDICATED EQUIPMENT
WP	WATER PROOF
HC	HEATING CABLE OUTLET
	INTEGRATED THERMOSTAT
GFI	GROUND FAULT INTERRUPTER

ATCO TYPICAL LEGEND	
	FAN TIMER
	EXHAUST FAN
	ELECTRICAL METER BOX
	DUPLEX RECEPTACLE 15A 120V
	1 x 2 FLUORESCENT FXURES CEILING MOUNT WITH DIFFUSER
	ELECTRIC PANEL 120V -240V 100A MAIN 24 CCTS
	EXTERIOR LIGHTING WITH PHOTOCELL
	WATER HEATER 20 GAL - 240V
	FLOOR DRAIN
	3KW FORCED AIR ELECT. HEATER
	DISCONNECT FOR 20G WATER HEATER

2 INTERIOR ELEVATION
1/4" = 1'-0"

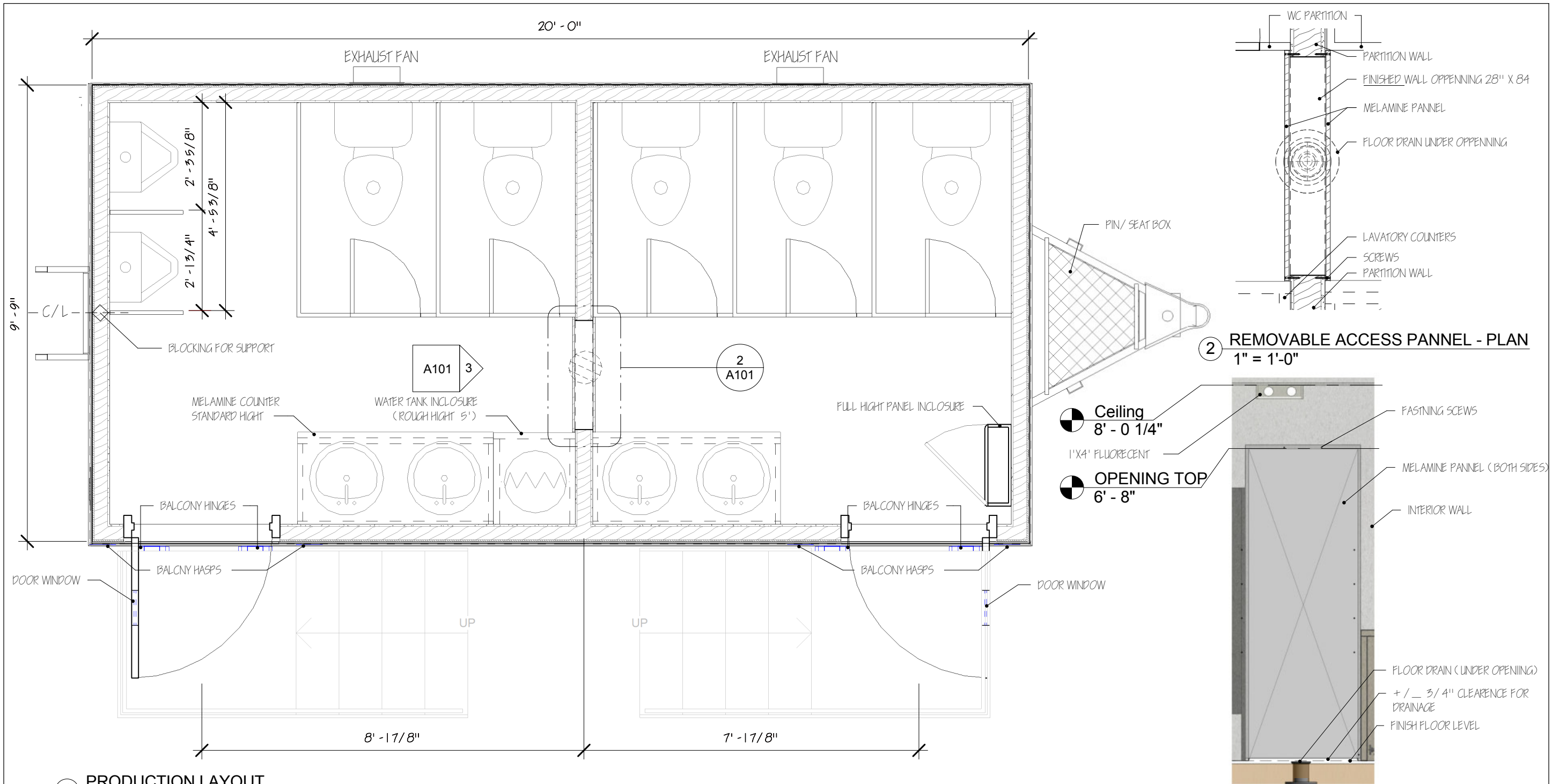
No.	Description	Date

Project number	
Date	2017-09-08 8:56:37 AM
Drawn by	Author
Checked by	Checker

1020 QSL
Scale As indicated

1500 rue De Guise, La Prairie, QC J5R 5W6
T 450.619.2699 | F 450.619.1887 | www.atco.com

GENERAL LAYOUT	A100
----------------	------



1 PRODUCTION LAYOUT
1/2" = 1'-0"

2 REMOVABLE ACCESS PANNEL - PLAN
1" = 1'-0"

3 REMOVABLE ACCESS PANNEL - ELEV.
1/2" = 1'-0"

No.	Description	Date

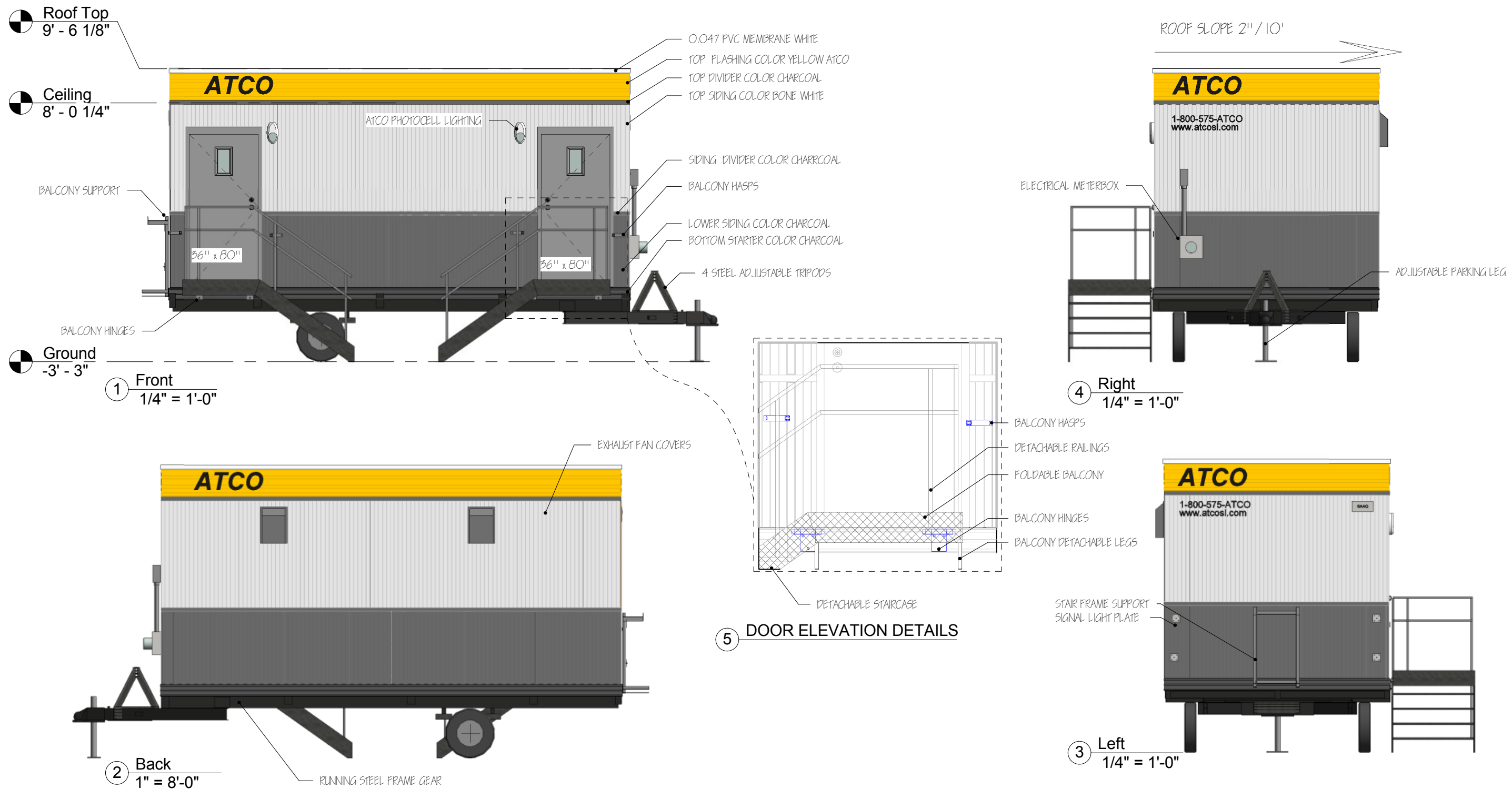
Project number	
Date	2017-09-08 8:56:42 AM
Drawn by	Author
Checked by	Checker

1020 QSL
Scale As indicated

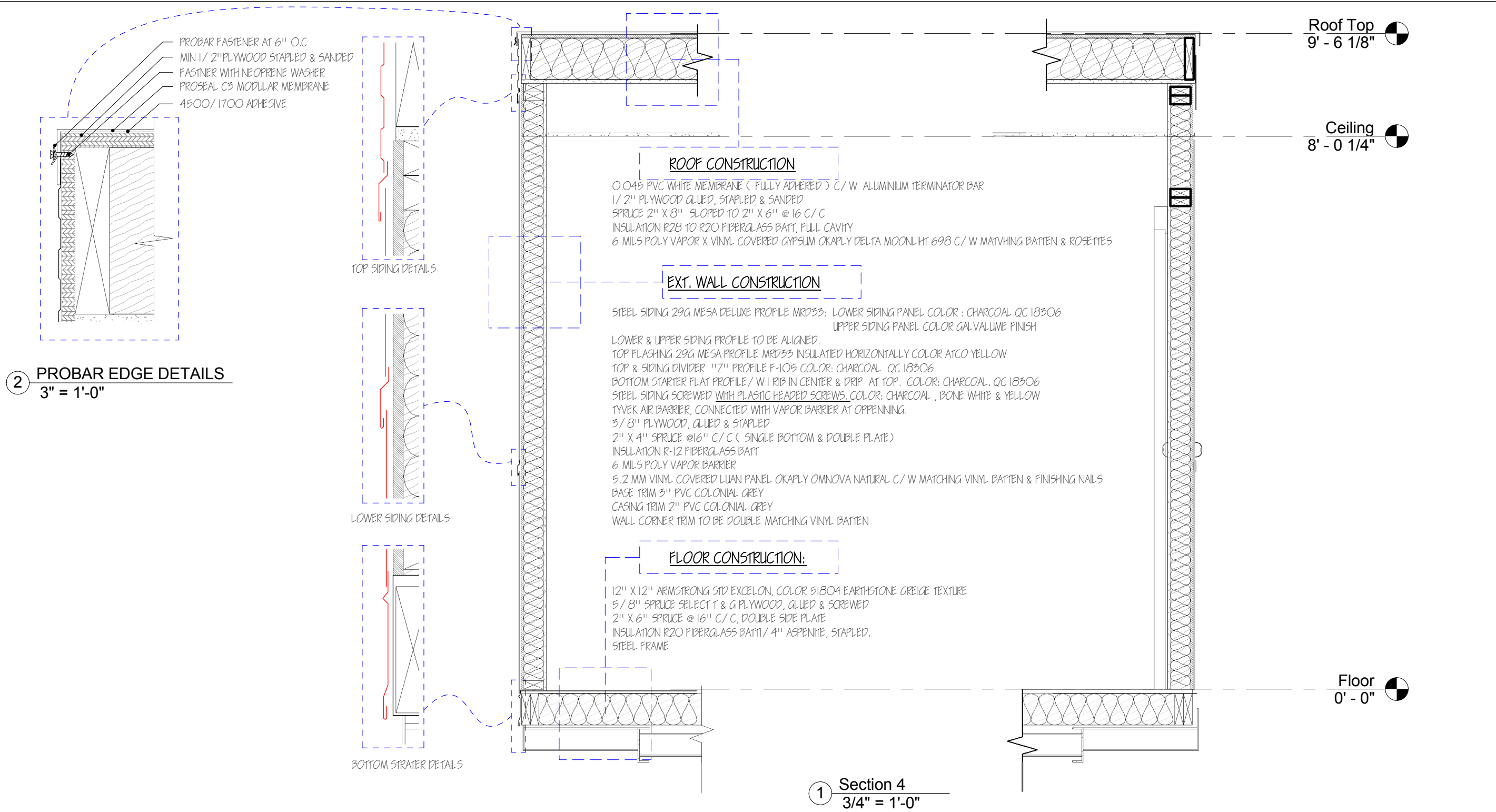


1500 rue De Guise, La Prairie, QC J5R 5W6
T 450.619.2699 | F 450.619.1887 | www.atco.com

PRODUCTION LAYOUT A101



<table><tr><th>No.</th><th>Description</th><th>Date</th></tr><tr><td> </td><td> </td><td> </td></tr><tr><td> </td><td> </td><td> </td></tr><tr><td> </td><td> </td><td> </td></tr><tr><td> </td><td> </td><td> </td></tr></table>			No.	Description	Date													<table><tr><td>Project number</td><td> </td></tr><tr><td>Date</td><td>2017-09-08 8:56:48 AM</td></tr><tr><td>Drawn by</td><td>Author</td></tr><tr><td>Checked by</td><td>Checker</td></tr></table>		Project number		Date	2017-09-08 8:56:48 AM	Drawn by	Author	Checked by	Checker	<table><tr><td colspan="2">1020 QSL</td></tr><tr><td colspan="2">Scale 1/4" = 1'-0"</td></tr><tr><td colspan="2"> </td></tr></table>		1020 QSL		Scale 1/4" = 1'-0"				<div><div>ATCO Structures & Logistics</div><div>1500 rue De Guise, La Prairie, QC J5R 5W6 T 450.619.2699 F 450.619.1887 www.atco.com</div></div>	
No.	Description	Date																																			
Project number																																					
Date	2017-09-08 8:56:48 AM																																				
Drawn by	Author																																				
Checked by	Checker																																				
1020 QSL																																					
Scale 1/4" = 1'-0"																																					
ELEVATIONS							A102																														



2 PROBAR EDGE DETAILS
3" = 1'-0"

1 Section 4
3/4" = 1'-0"

No.	Description	Date

Project number	
Date	2017-09-08 8:56:52 AM
Drawn by	Author
Checked by	Checker

1020 QSL
Scale As indicated



1500 rue De Guise, La Prairie, QC J5R 5W6
T 450.619.2699 | F 450.619.1887 | www.atco.com

TYPICAL SECTIONS

A103



① 3D PERSPECTIVE



② 3D PERSPECTIVE INTERIOR

No.	Description	Date

Project number	
Date	2017-09-08 8:56:58 AM
Drawn by	Author
Checked by	Checker

1020 QSL
Scale

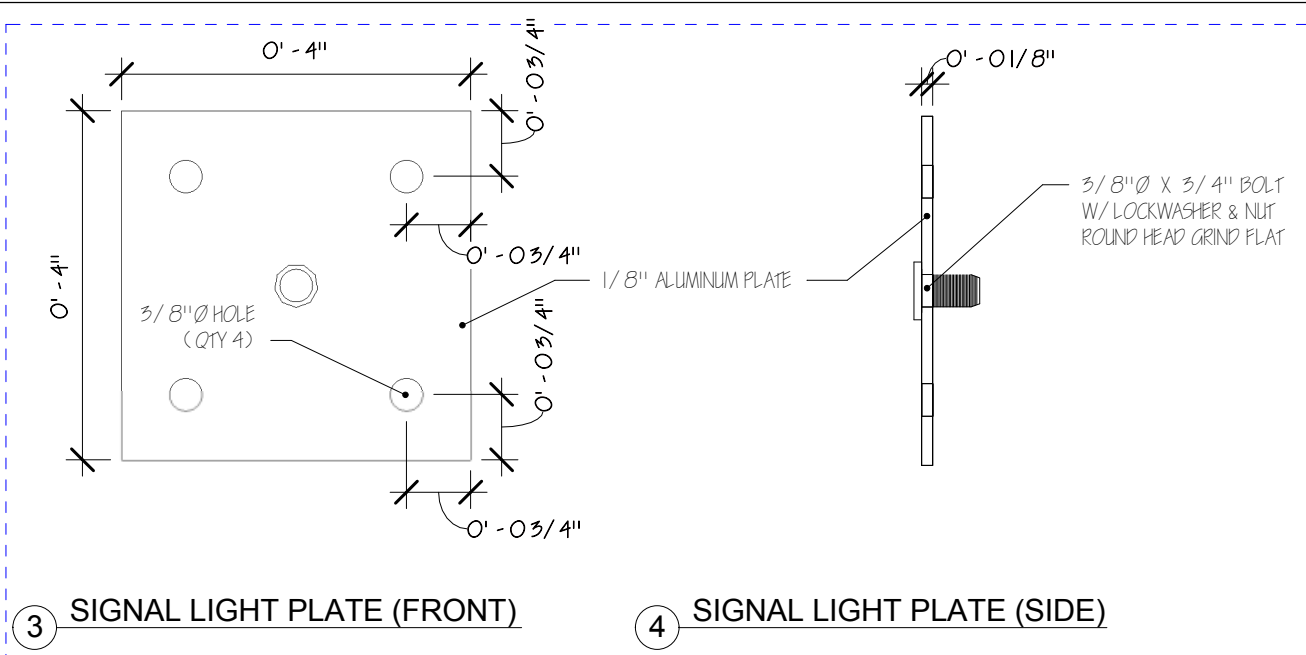
ATCO Structures & Logistics

1500 rue De Guise, La Prairie, QC J5R 5W6
T 450.619.2699 | F 450.619.1887 | www.atco.com

PERSPECTIVE DRAWINGS

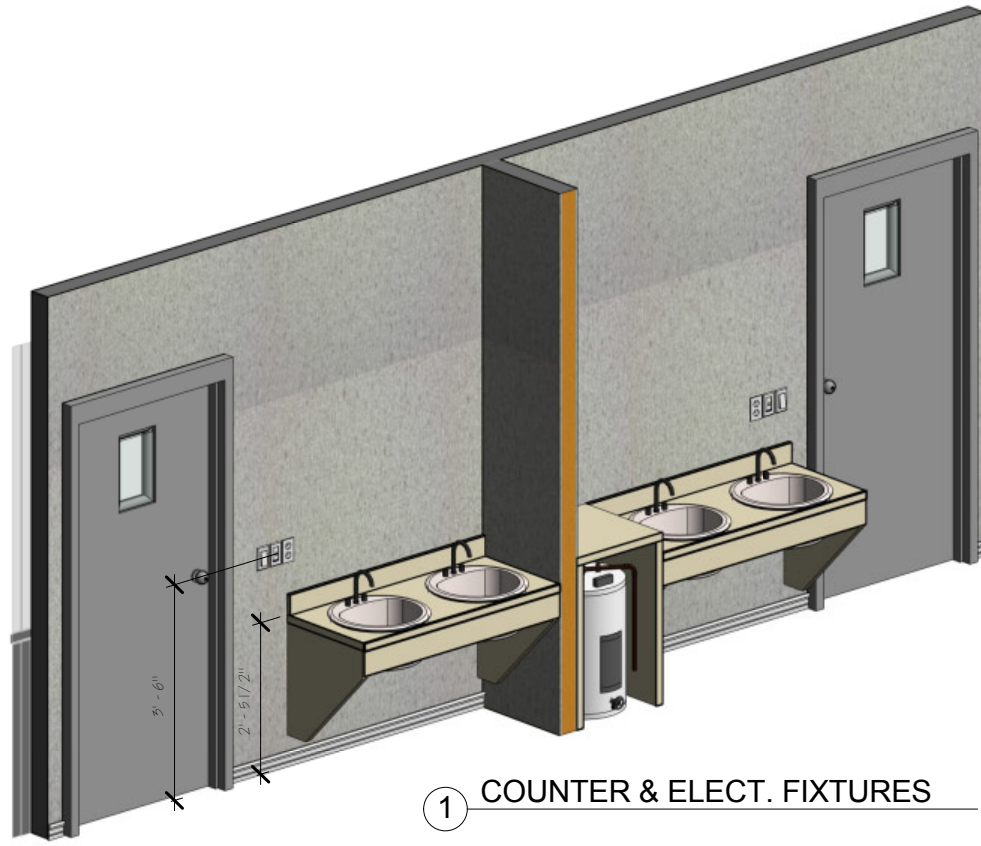
A104

2017-09-08 8:56:58 AM

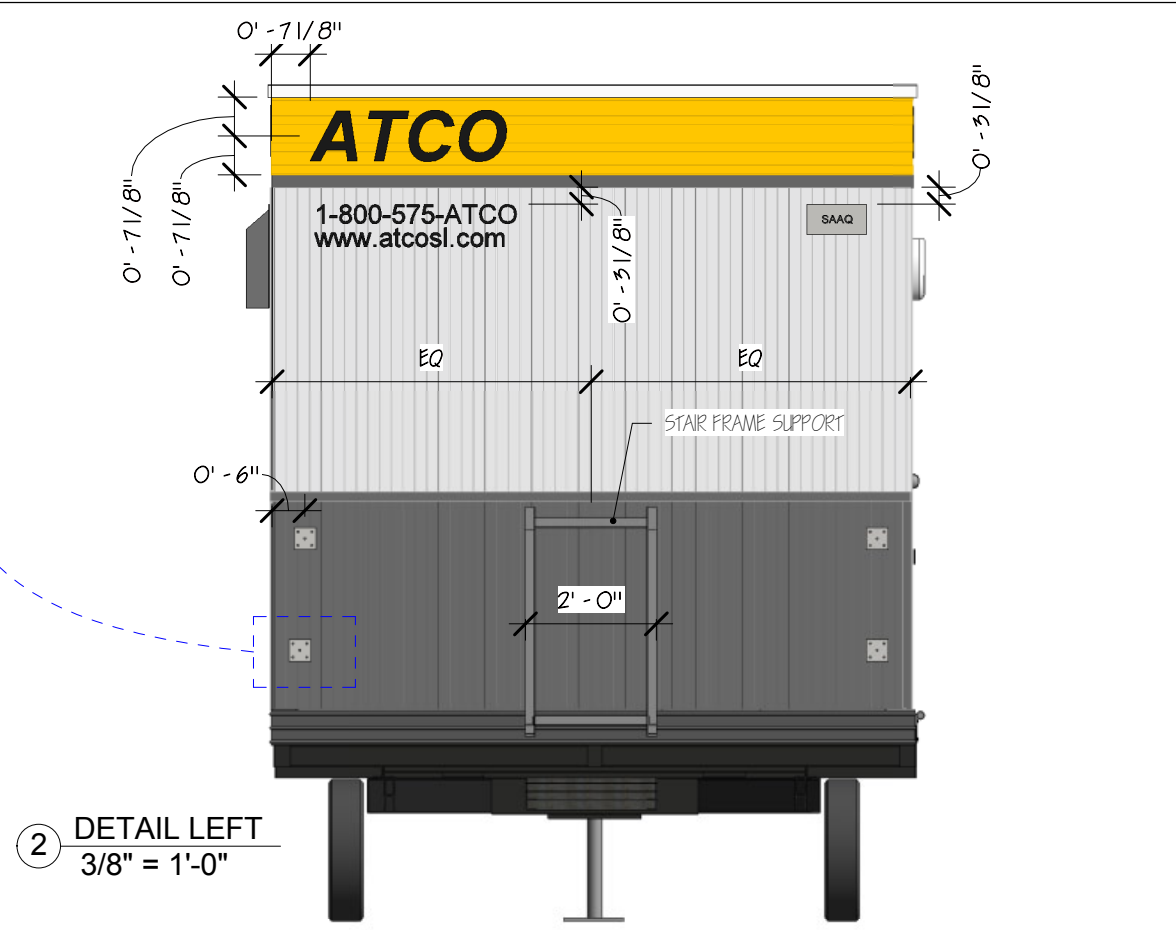


3 SIGNAL LIGHT PLATE (FRONT)

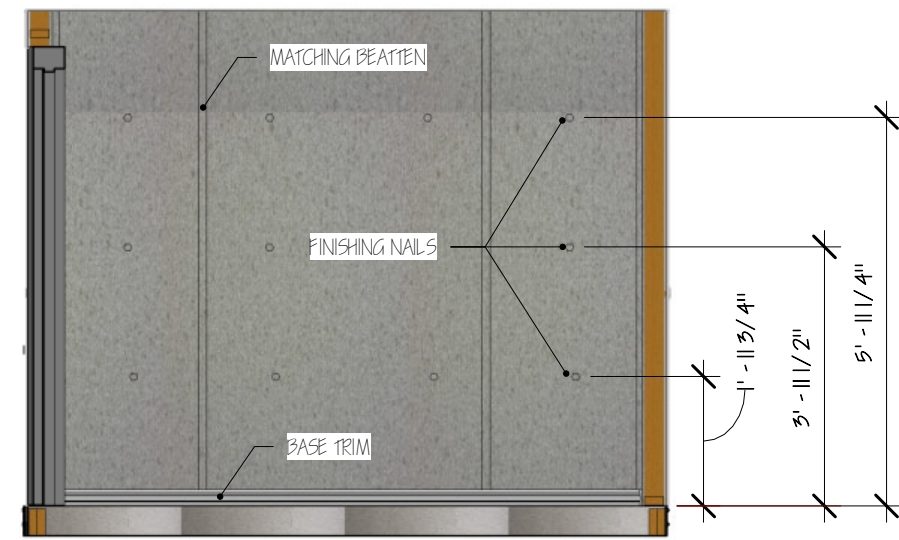
4 SIGNAL LIGHT PLATE (SIDE)



1 COUNTER & ELECT. FIXTURES



2 DETAIL LEFT
3/8" = 1'-0"



5 INTERIOR WALL FINISH

No.	Description	Date

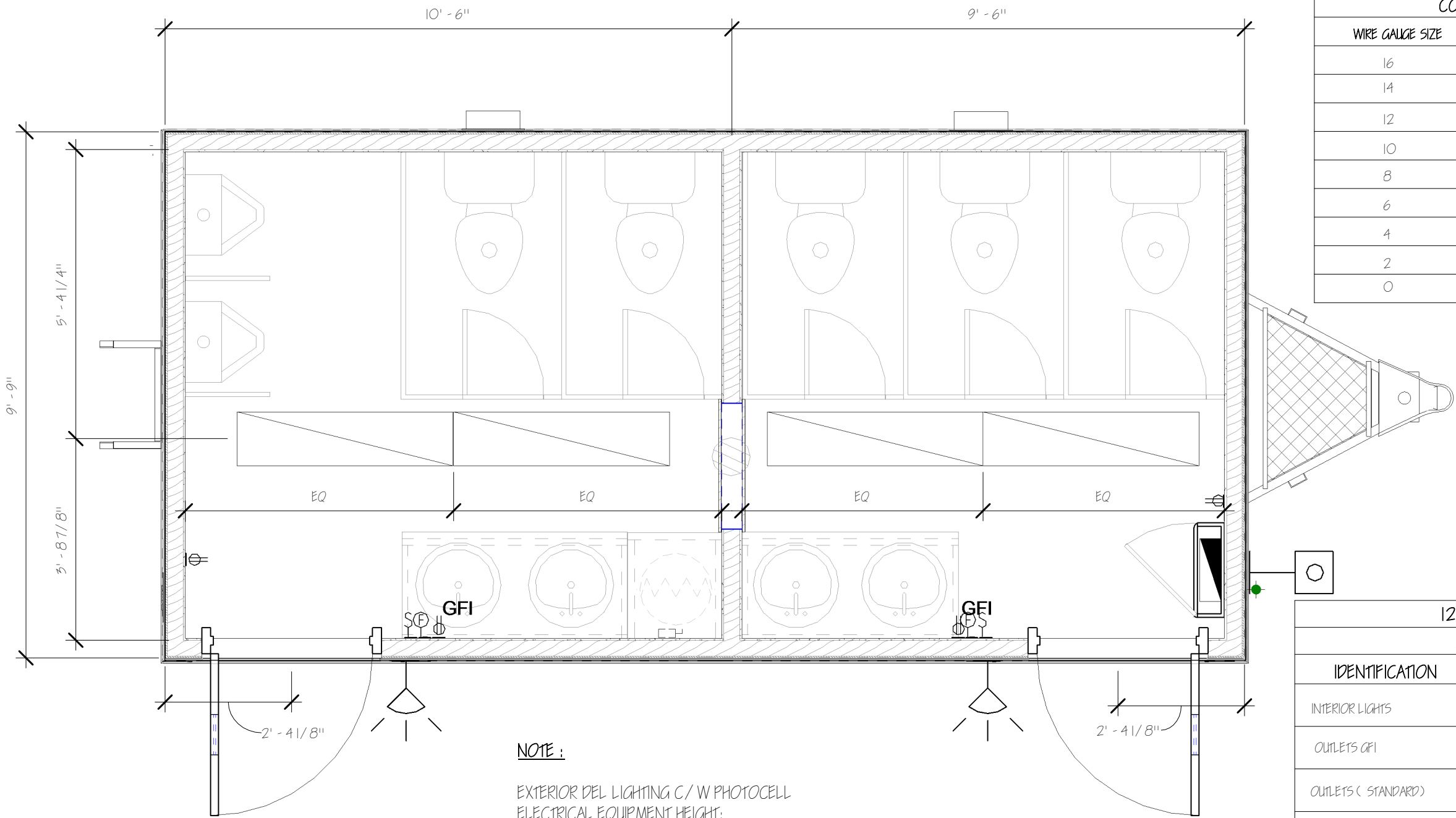
Project number	
Date	2017-09-08 8:57:08 AM
Drawn by	Author
Checked by	Checker

1020 QSL
Scale 3/8" = 1'-0"



1500 rue De Guise, La Prairie, QC J5R 5W6
T 450.619.2699 | F 450.619.1887 | www.atco.com

DETAILD100



NOTE :
EXTERIOR DEL LIGHTING C / W PHOTOCELL
ELECTRICAL EQUIPMENT HEIGHT:
SWICHT , GFI & FAN TIMER @ 42" CENTER
RECEPTACLE @ 18" CENTER

COOPPER SIZE AMP RATING	
WIRE GAUGE SIZE	AMP RATING
16	10
14	15
12	20
10	30
8	55
6	75
4	95
2	130
0	170

120 / 240 3W 1 PH			
MAIN 100 AMP.			
IDENTIFICATION	BREAKER	CCT#	QTY
INTERIOR LIGHTS	15A	1	2
OUTLETS GFI	15A	2	2
OUTLETS (STANDARD)	15A	3	2
FORCED AIR HEATER	30A	4	2
W. HEATER CONNECTION	30A	5	1

No.	Description	Date

Project number	
Date	2017-09-08 8:57:13 AM
Drawn by	Author
Checked by	Checker

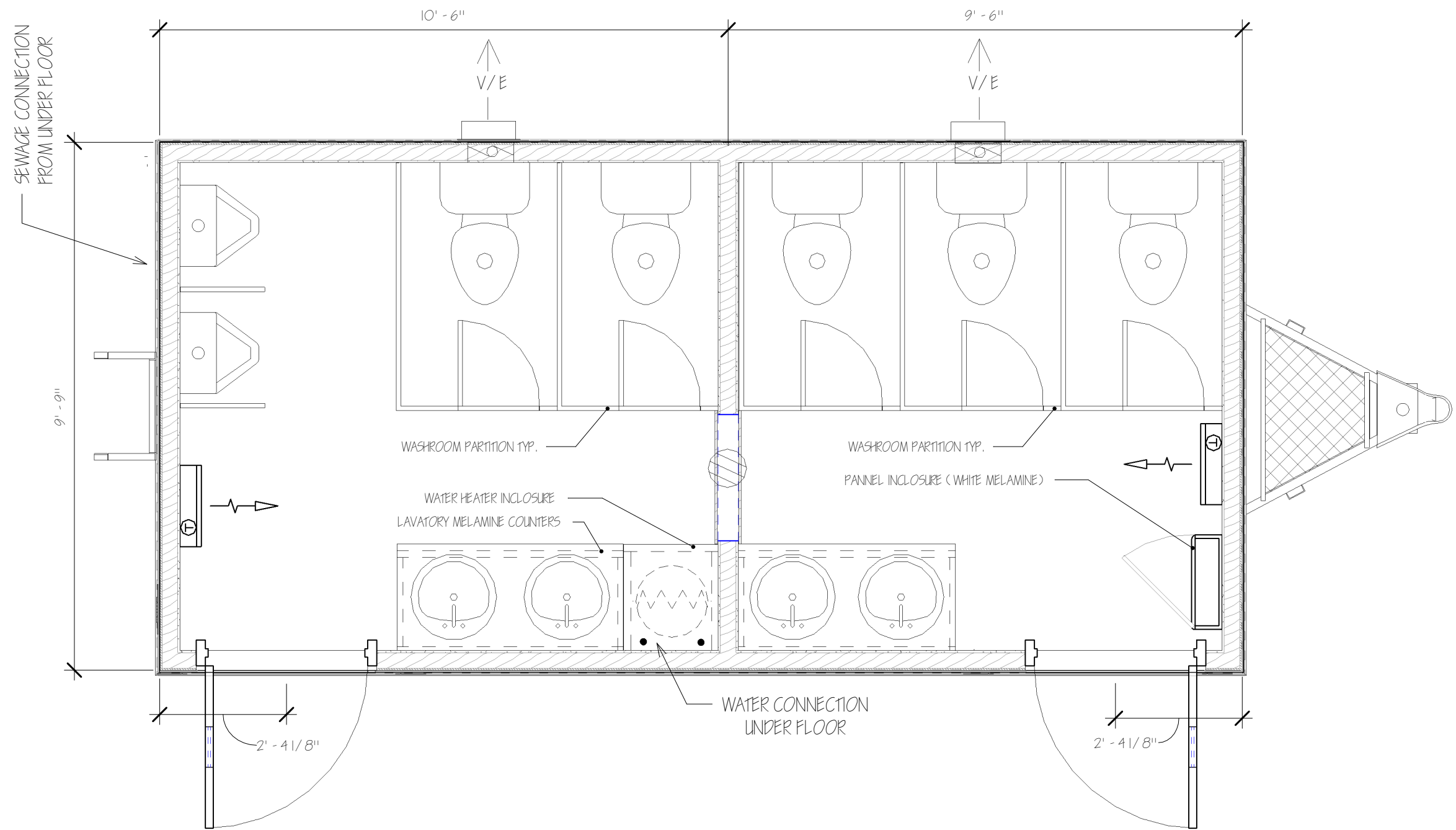
1020 QSL
Scale 1/2" = 1'-0"



1500 rue De Guise, La Prairie, QC J5R 5W6
T 450.619.2699 | F 450.619.1887 | www.atco.com

ELECTRICAL & LIGHTING

E 100



No.	Description	Date

Project number	
Date	2017-09-08 8:57:19 AM
Drawn by	Author
Checked by	Checker

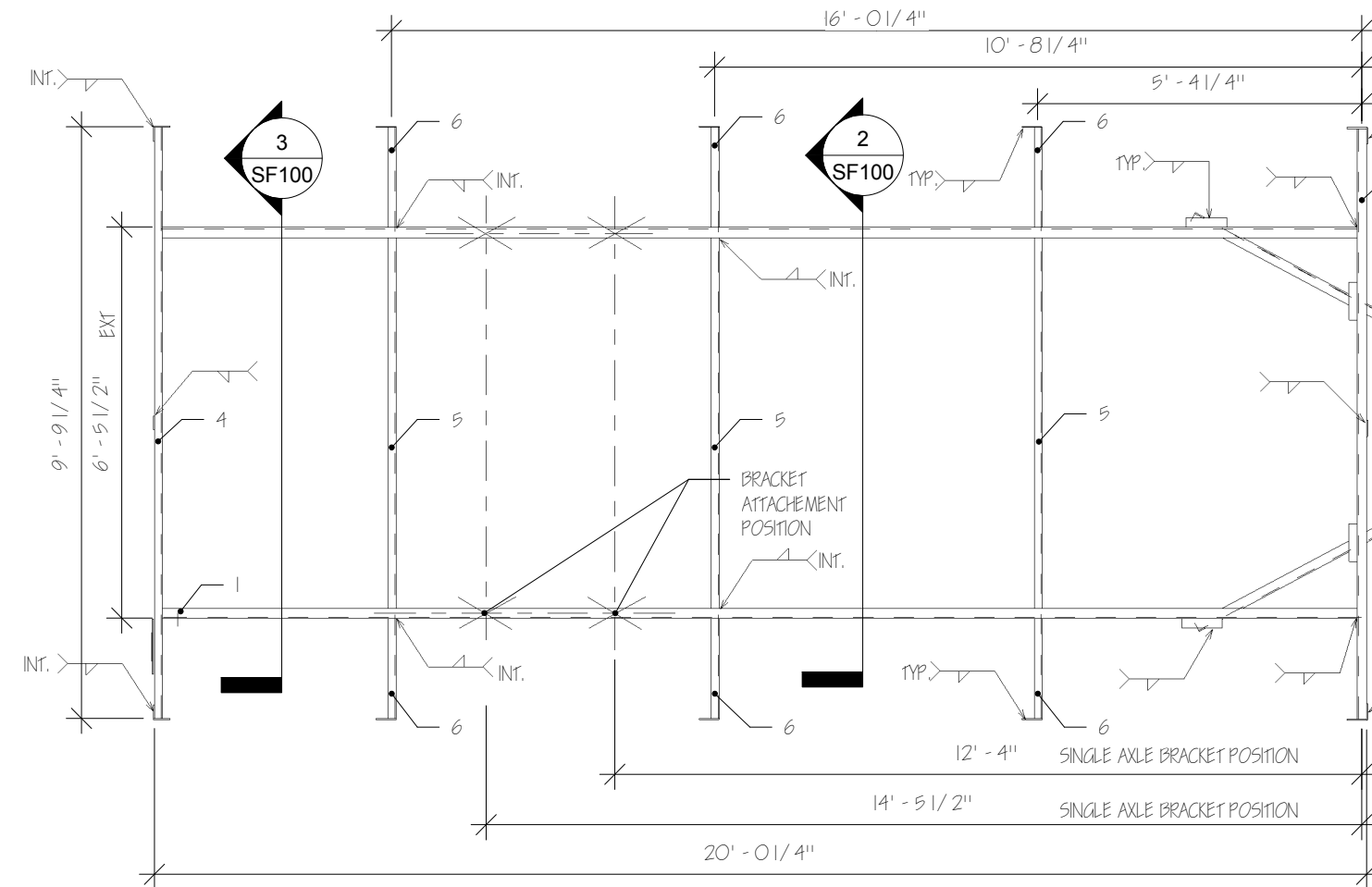
1020 QSL
Scale 1/2" = 1'-0"



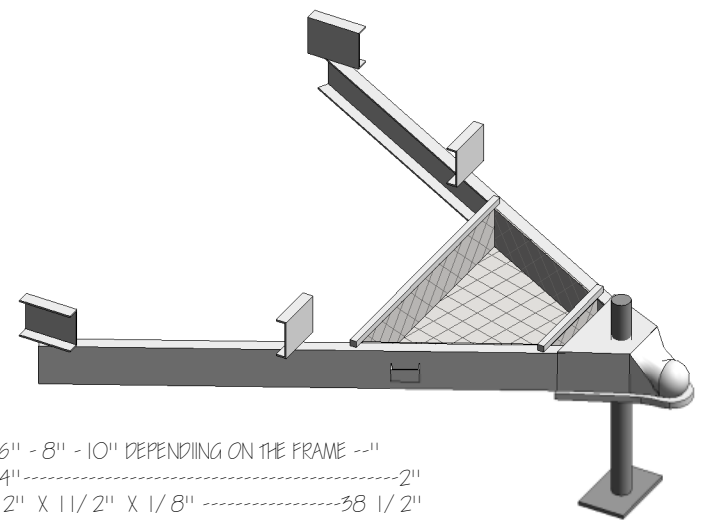
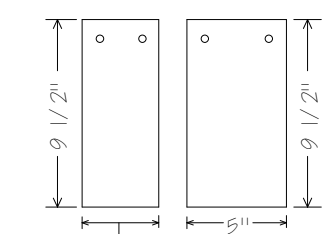
1500 rue De Guise, La Prairie, QC J5R 5W6
T 450.619.2699 | F 450.619.1887 | www.atco.com

MECHANICAL & VENTILATION M 100

2017-09-08 8:57:19 AM



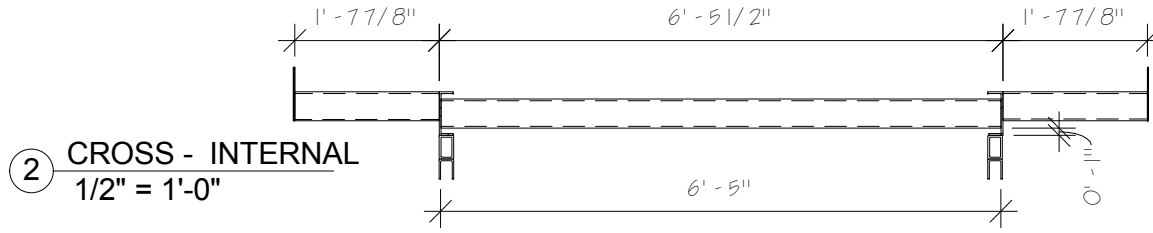
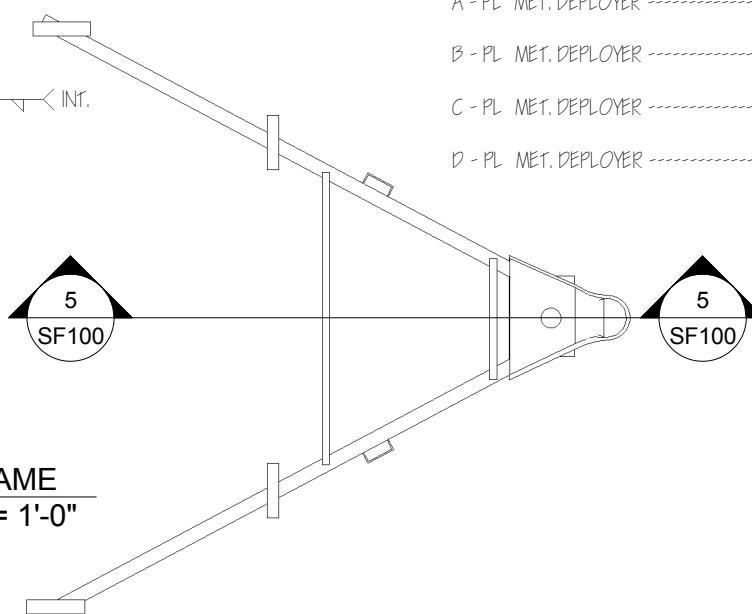
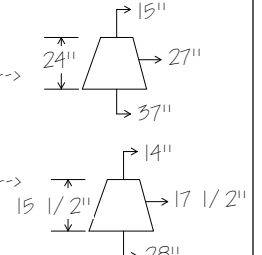
OUTRIGGER TYPICAL DETAIL
END OF PLATE (LEFT) & CORNER PLATE (RIGHT).
3/16" THICK STEEL.



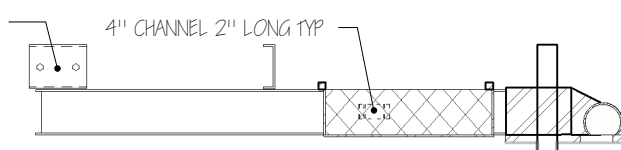
MATERIAL :

- #1 CHANNEL @ 6" - 8" - 10" DEPENDING ON THE FRAME --1"
- #2 CHANNEL @ 4" -----2"
- #3 ANGLE 1 1/2" X 1 1/2" X 1/8" -----38 1/2"
- #4 ANGLE 1 1/2" X 1 1/2" X 1/8" -----28 1/4"
- #5 ANGLE 1 1/2" X 1 1/2" X 1/8" -----27 1/2"
- #6 ANGLE 1 1/2" X 1 1/2" X 1/8" -----14 1/2"

- A - PL MET. DEPLOYER -----6-8-10 X 15"
- B - PL MET. DEPLOYER -----
- C - PL MET. DEPLOYER -----6-8-10 X 31"
- D - PL MET. DEPLOYER -----



8" CHANNEL WITH 2 HOLES



PARKING LEG
2 1/2" Ø SCH40 STEEL PIPE
C/ W 1/4" X 6" X 6" STEEL BASE

#	DESCRIPTION	
<u>6C @ 8.2</u>		
1	19' - 8 3/4"	X 2
2	9' - 9 1/4"	X 1
3	-----"	X 2
<u>4C @ 5.4</u>		
4	9' - 9 1/4"	X 1
5	6' - 5"	X 3
6	1' - 7 7/8"	X 6

No.	Description	Date

Project number	
Date	2017-09-08 8:57:24 AM
Drawn by	ALI H.
Checked by	Checker

1020 QSL
Scale As indicated

1500 rue De Guise, La Prairie, QC J5R 5W6
T 450.619.2699 | F 450.619.1887 | www.atco.com

QSL1020

SF100