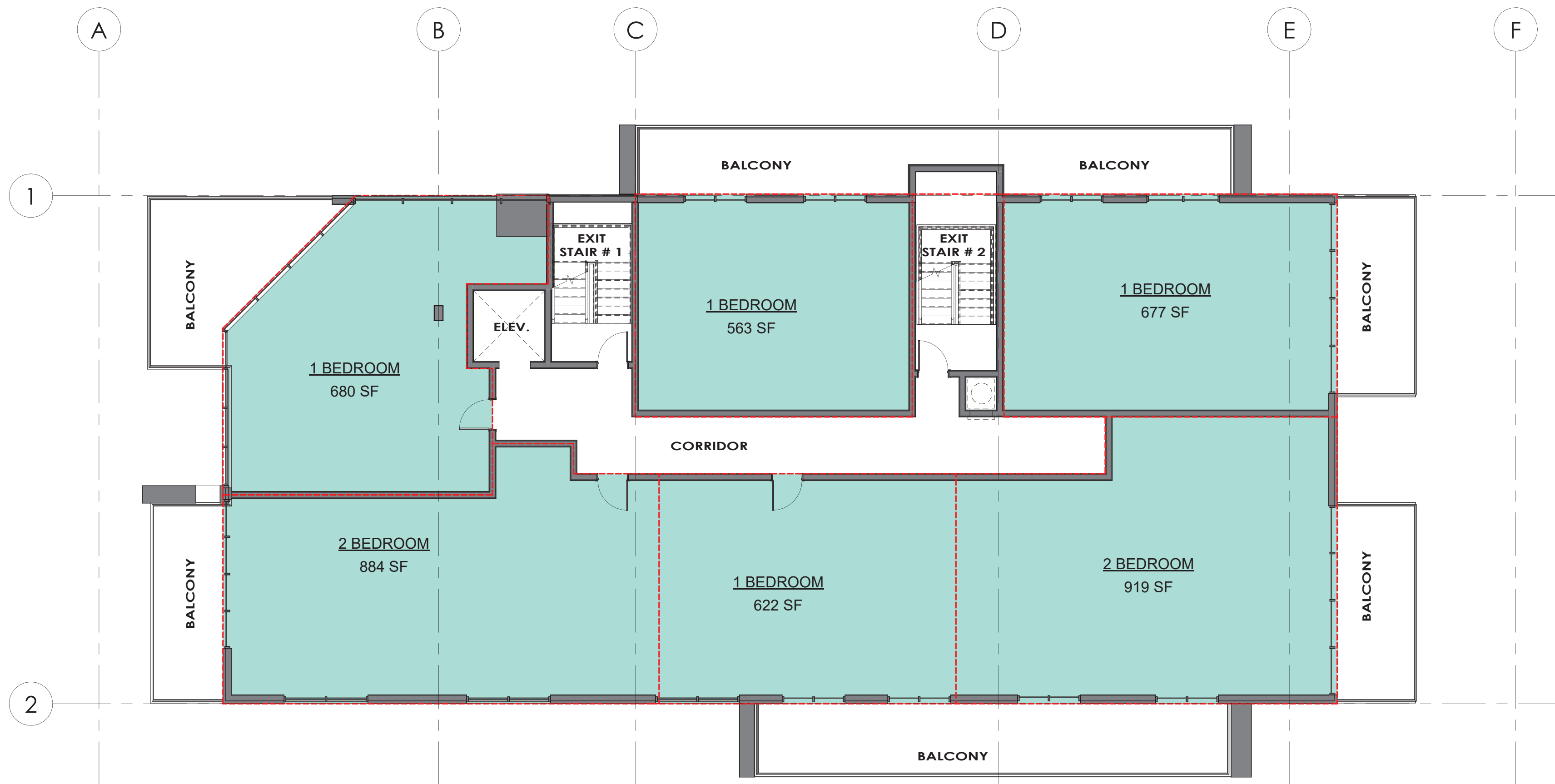


BUILDING C 2ND FL. PLATE

1 : 100



BUILDING C 3RD - 4TH FL. PLATE

1 : 100

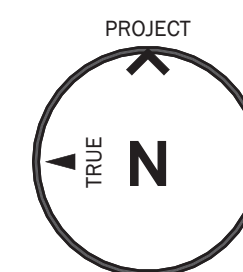
UNIT STATISTICS
(FINAL UNIT COUNTS AND SQUARE
FOOTAGES TO BE DETERMINED AT
DESIGN DEVELOPMENT STAGE
DETAIL SEE SITE PLANS)

DISCLAIMER:
: RENDERINGS/FLOORPLANS ARE ARTISTS
CONCEPTIONS. ALL FLOOR PLANS ARE APPROXIMATE
DIMENSIONS. ACTUAL USABLE FLOOR SPACE MAY
VARY FROM THE STATED FLOOR AREA. ALL PLANS MAY
BE SUBJECT TO MIRRORING. DESIGN TO BE CONFIRMED
WITH ACTUAL ZONING BY-LAW FOR SUBJECT LOTS ONCE
AN ACTUAL PARCEL AND MUNICIPALITY HAS BEEN
CONFIRMED BY THE CLIENT

ALL CONTRACTORS AND/OR TRADES SHALL VERIFY ALL DIMENSIONS,
NOTES, SITE AND REPORT ANY DISCREPANCIES PRIOR TO
COMMENCEMENT OF THE WORK. THIS DRAWING NOT TO BE SCALED. ALL
DRAWINGS, PRINTS AND RELATED DOCUMENTS ARE THE PROPERTY OF
THE ARCHITECT AND MUST BE RETURNED UPON REQUEST.
REPRODUCTION OF DRAWINGS AND RELATED DOCUMENTS IN PART OR IN
WHOLE IS STRICTLY FORBIDDEN WITHOUT WRITTEN CONSENT.
DRAWINGS TO BE FOR THE PURPOSE FOR WHICH THEY ARE ISSUED.

No.	DATE:	DESCRIPTION:	BY:
1	MARCH 12/25	ZBA SUBMISSION	CH

COMMISSION: 216-146

VISCA RESIDENTIAL
DEVELOPMENTFRASER STREET /GEORGE
STREET, NIAGARA FALLS, ONTARIO**A · C · K**
architects
STUDIO INC.Architectural Office:
290 Glendale Ave., St. Catharines, ON, L2T 2L3
905 984 5545

SHEET TITLE:

BUILDING C
2ND - 4TH FLOOR
PLATE

DRAWN BY:	JMR	DRAWING No.:
CHECKED BY:	MDA	A.BC 1
DATE ISSUED:		
PROJECT No.:	216-146	