



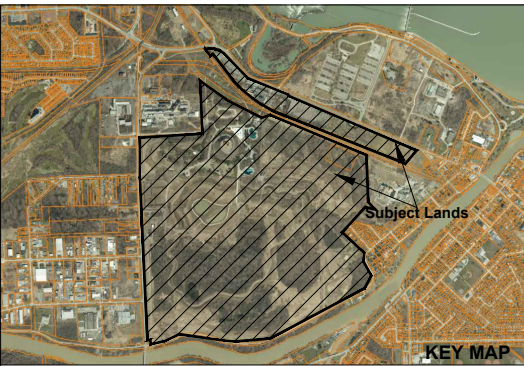
PART 5
AREA=±1124 Sq.m
ROAD WIDENING

PART 1
AREA = 7.65 HA

PART 2
AREA = 14.75 HA

PART 4
AREA = 170.82 HA

VOIDED LAYOUT
NOT INCLUDED IN THIS SURVEY



SITE STATISTICS

PART 1 PARKING	1,154
PART 3 PARKING	68
PART 4 PARKING	30
PART 1 LOT COVERAGE	14.9%
PART 3 LOT COVERAGE	1.05%
PART 4 LOT COVERAGE	0.067%
PART 1 BUILDING & RIDE CAPACITY	5,344
PART 3 BUILDING & RIDE CAPACITY	329

LEGEND

	Main Building & Structures
	Accessory Building & Structure

**SITE PLAN
PART 2**

7657 PORTAGE ROAD

For: MarineLand of Canada Inc. Scale: 1:4,500
Drawing No.: 20501.03.01 Date: January 29, 2025

THIS SKETCH HAS BEEN PREPARED USING SURVEY DATA PRODUCED BY J. D. BARNES. THE SKETCH IS NOT A CERTIFIED SURVEY AND SHOULD NOT BE RELIED UPON FOR LEGAL OR TECHNICAL REASONS.

THIS DRAWING SHALL ONLY BE USED IN CIRCUMSTANCES FOR WHICH IT WAS ORIGINALLY PREPARED AND FOR WHICH NPG PLANNING SOLUTIONS INC. WAS RETAINED.

NPG PLANNING SOLUTIONS INC. DOES NOT TAKE RESPONSIBILITY FOR THE ACCURACY OF THE LOCAL INFORMATION OR OTHER MAPPED FEATURES FROM SECONDARY SOURCES SHOWN ON THIS DRAWING. THE INFORMATION ISSUED MAY BE CONFIDENTIAL AND MUST NOT BE USED OTHER THAN BY THE INTENDED RECIPIENT UNLESS AUTHORIZED BY NPG PLANNING SOLUTIONS INC. NPG PLANNING SOLUTIONS INC. ACCEPTS NO LIABILITY OR RESPONSIBILITY FOR ANY LOSS OR DAMAGE SUFFERED BY THE RECIPIENT ARISING OUT OF, OR IN CONNECTION WITH, THE USE OR MISUSE OF THE INFORMATION ISSUED.

ALL DRAWINGS ARE THE PROPERTY OF NPG PLANNING SOLUTIONS INC. AND MAY NOT BE ALTERED WITHOUT WRITTEN PERMISSION FROM NPG PLANNING SOLUTIONS INC.
DO NOT SCALE THE DRAWING.

