

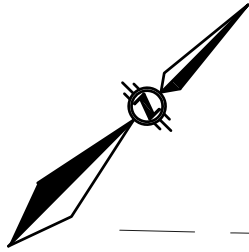
SITE CONDITION PLAN

LOTS 15 & 16
REGISTERED PLAN No. 328
CITY OF NIAGARA FALLS
REGIONAL MUNICIPALITY OF NIAGARA

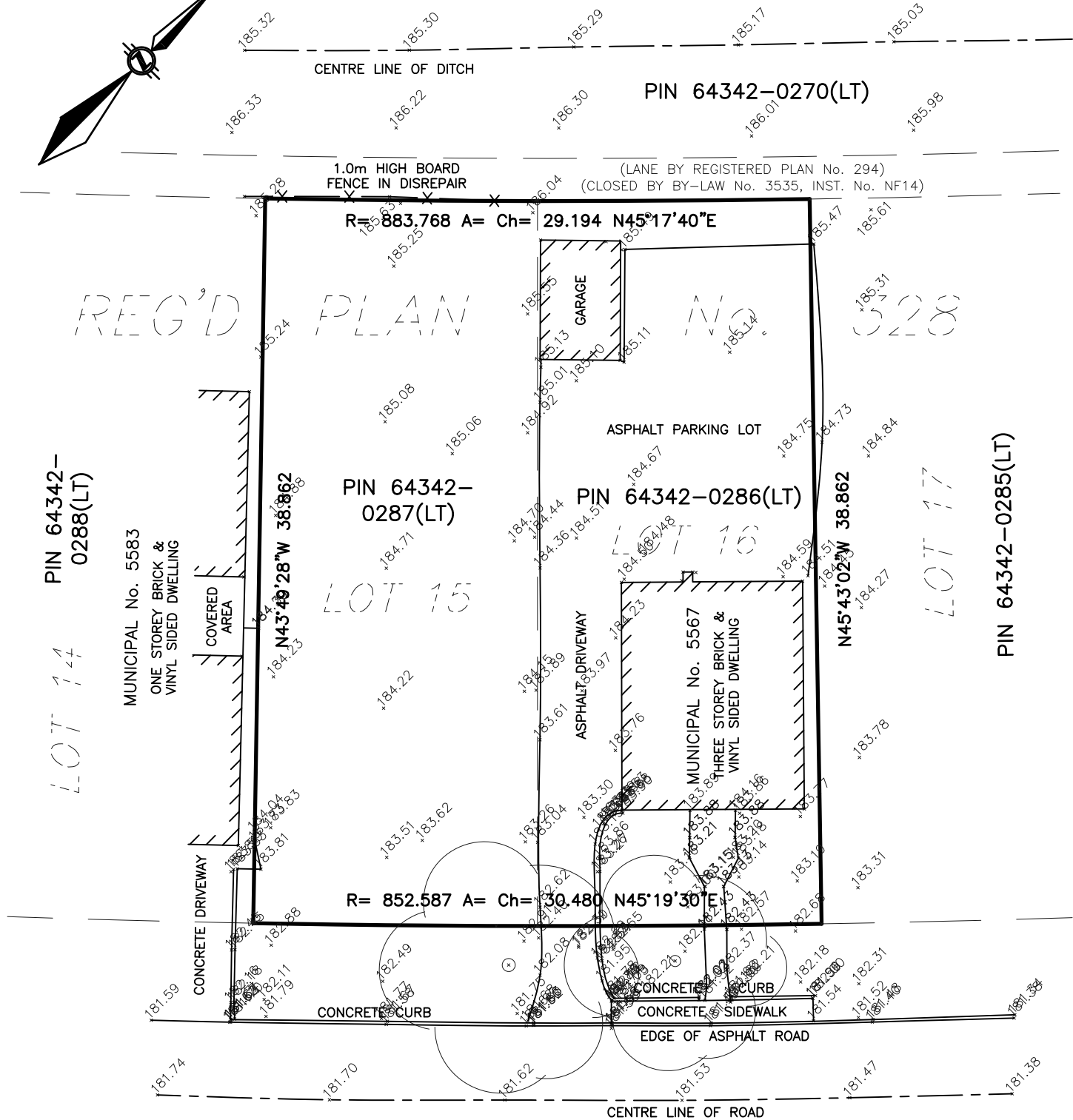
BEARING NOTE

BEARINGS HEREON ARE GRID BEARINGS AND ARE DERIVED FROM OBSERVED REFERENCE POINTS BY REAL-TIME NETWORK OBSERVATIONS (LEICA SMARTNET) AND ARE REFERRED TO THE CENTRAL MERIDIAN 81°00'W LONGITUDE, ZONE 17, UNIVERSAL TRANSVERSE MERCATOR (6° UTM). THESE VALUES ARE NAD83 (CSRS v7) EPOCH 2010.0 REFERENCE SYSTEM.

SCALE 1:300 METRIC



TOWNSHIP LOT 128



LEGEND

- 181.72 DENOTES EXISTING ELEVATION
- DENOTES DECIDUOUS TREE

ONTARIO AVENUE

(BY REGISTERED PLAN No. 294)

PIN 64342-0292(LT)

ELEVATION NOTE

ELEVATIONS HEREON ARE ORTHOMETRIC AND ARE RELATED TO CGVD28, HT2, AS PREVIOUSLY ESTABLISHED BY THE LAROCQUE GROUP.

METRIC NOTE

DISTANCES SHOWN ON THIS PLAN ARE IN METRES AND CAN BE CONVERTED TO FEET BY DIVIDING BY 0.3048.

DISTANCES SHOWN ON THIS PLAN ARE ADJUSTED GROUND LEVEL DISTANCES AND CAN BE USED TO COMPUTE GRID CO-ORDINATES BY MULTIPLYING THE DISTANCES BY A COMBINED SCALE FACTOR OF 0.99990342.



THE LAROCQUE GROUP

O.L.S./PROJECT CONSULTANTS/LAND MANAGEMENT

12 LYMAN STREET, ST. CATHARINES, ONTARIO
 905-688-1413
 6385 COLBORNE STREET, NIAGARA FALLS, ONTARIO
 905-358-8400
www.larocquegroup.ca

DATE : NOVEMBER 17, 2020 FILE No. : NS2020-070
 DWG.FILE : NS2020-070-01