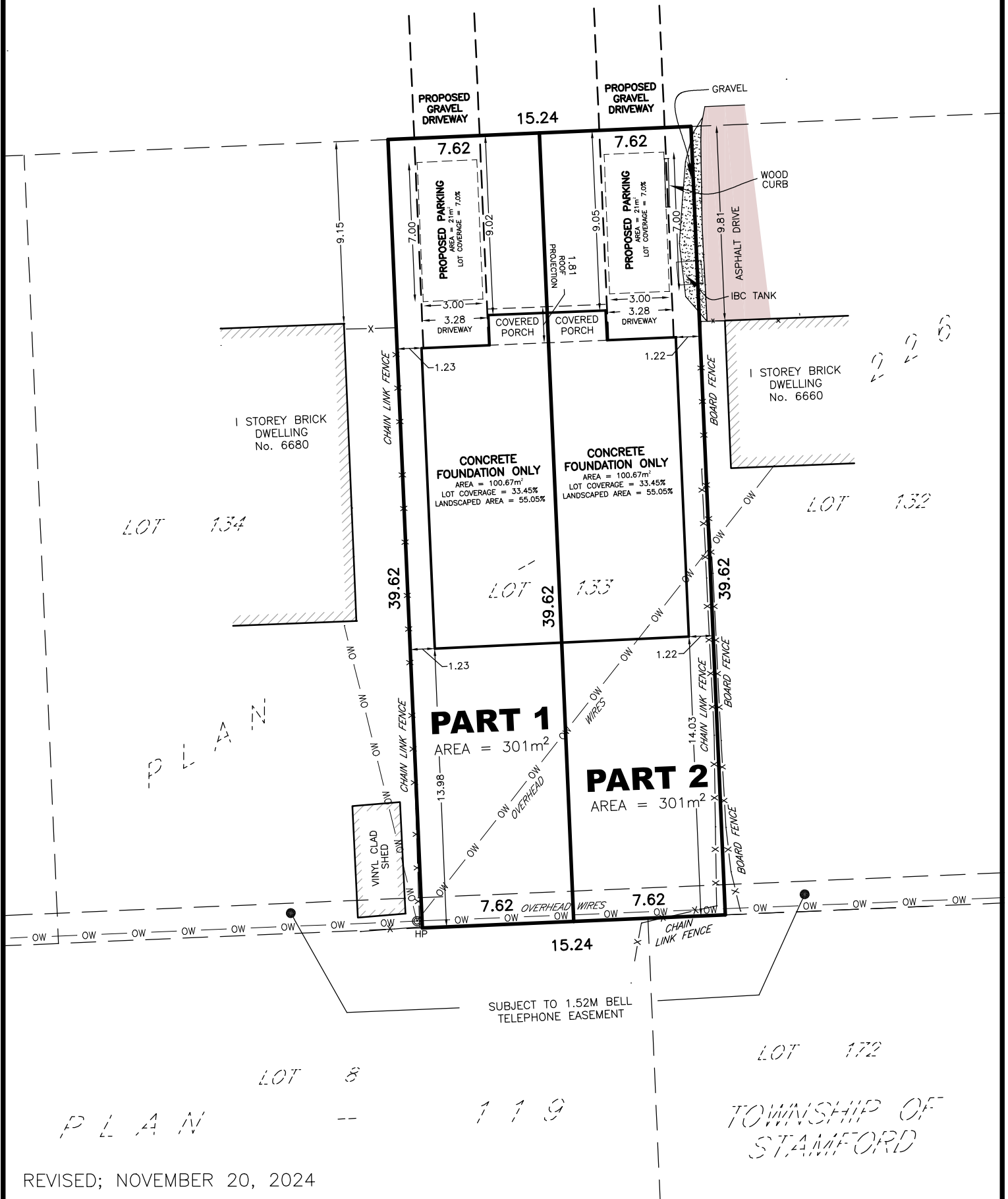


HAWKINS STREET

(20.12M WIDE)



REVISED; NOVEMBER 20, 2024

SKETCH

PREPARED FOR SEVERANCE APPLICATION

LOT 133
 PLAN 226

IN THE
CITY OF NIAGARA FALLS
 REGIONAL MUNICIPALITY OF NIAGARA
 SCALE 1 : 250 (METRIC)

NOTE: THIS SKETCH IS PREPARED FROM COMPILED AND CALCULATED INFORMATION, NOT FROM AN ACTUAL SURVEY.
 DO NOT SCALE FROM THIS DRAWING.
 ALL MEASUREMENTS ARE +/- MEASUREMENTS.

CAUTION: THIS IS NOT A PLAN OF SURVEY AND SHALL NOT BE USED EXCEPT FOR THE PURPOSE INDICATED IN THE TITLE BLOCK.

"THIS IS NOT AN ORIGINAL COPY UNLESS EMBOSSED WITH SEAL"

© COPYRIGHT 2024

THE REPRODUCTION, ALTERATION OR USE OF THIS SKETCH, IN WHOLE OR IN PART WITHOUT THE EXPRESS WRITTEN PERMISSION OF CHAMBERS AND ASSOCIATES SURVEYING LTD. IS STRICTLY PROHIBITED.

SEPT. 26, 2024
 DATE

Don Chambers
 DONALD G. CHAMBERS, B. Sc., O.L.S.

CHAMBERS AND ASSOCIATES SURVEYING LTD

12 THOROLD ROAD EAST (905) 735-7841 / 735-7844
 WELAND ONTARIO L3C 3T2 FAX (905) 735-7333
 www.casl-surveying.com

DWG **23035_SEV1** FILE **23-35**

