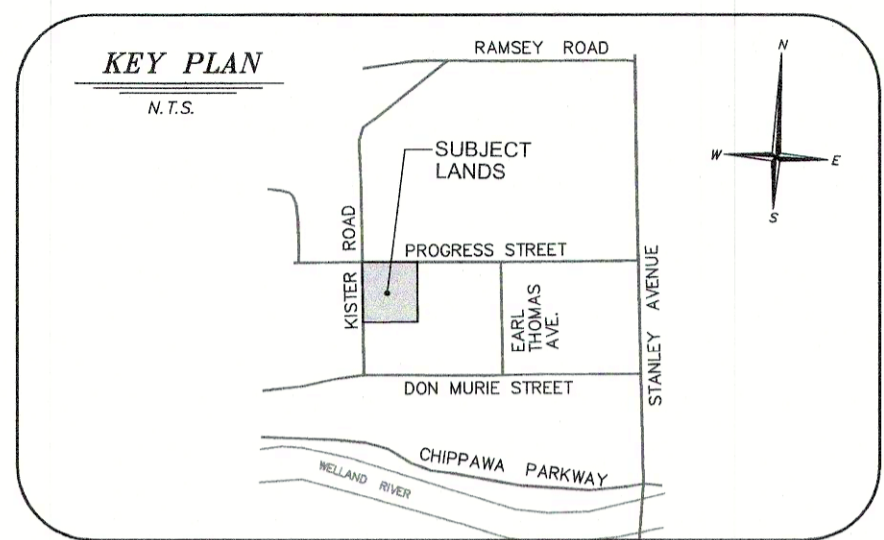
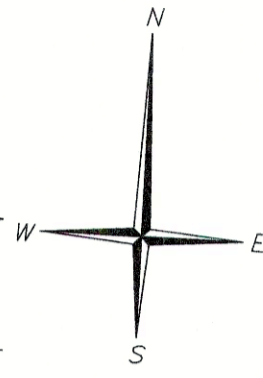
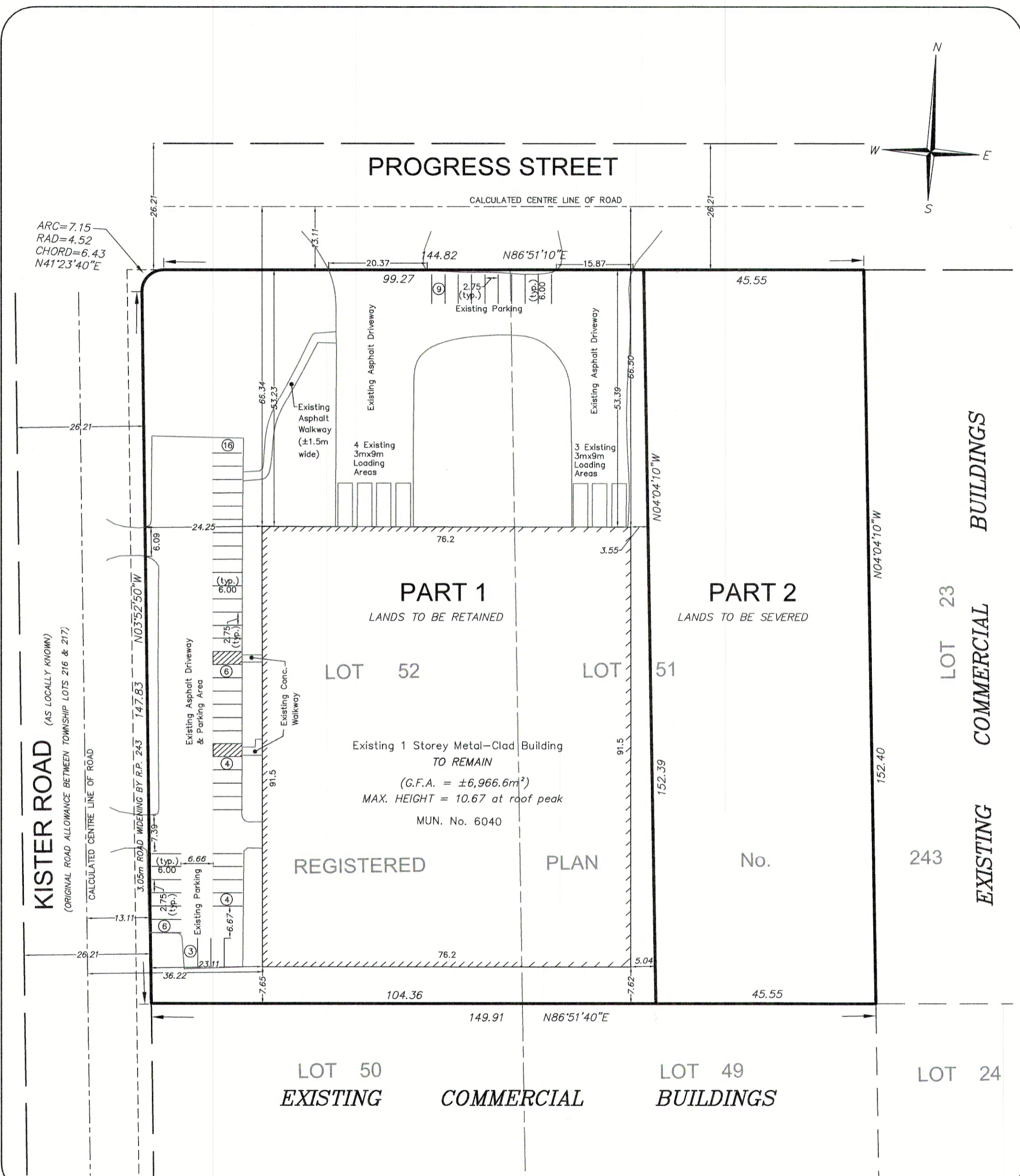


E-18904

E-18904



SKETCH FOR CONSENT TO SEVER
6040 PROGRESS STREET
CITY OF NIAGARA FALLS
SCALE 1:750

THE ABOVE NOTED LANDS ARE LEGALLY DESCRIBED AS:
LOT 51 AND LOT 52, REGISTERED PLAN No. 243
CITY OF NIAGARA FALLS
REGIONAL MUNICIPALITY OF NIAGARA

METRIC:
DISTANCES SHOWN ON THIS SKETCH ARE IN METRES AND CAN BE CONVERTED TO FEET BY DIVIDING BY 0.3048.

NOTE:
THIS SKETCH IS BASED ON PLANS FILED IN OUR OFFICE AND NOT ON AN ACTUAL FIELD SURVEY.

THIS SKETCH IS PREPARED TO ACCOMPANY AN APPLICATION TO THE LAND DIVISION COMMITTEE REQUESTING A GRANT OF SEVERANCE AND IS NOT INTENDED FOR REGISTRATION.

CAUTION:
THIS IS NOT A PLAN OF SUBDIVISION AND SHALL NOT BE USED FOR TRANSACTION OR MORTGAGE PURPOSES.

CONSENT SCHEDULE:
PART 1 - LANDS TO BE RETAINED AREA = 15,854.8m²
PART 2 - LANDS TO BE SEVERED AREA = 6,940.7m²

NOTE:
PART 1 - TOTAL LANDSCAPED OPEN SPACE AREA=4,923.1m²
- FRONT YARD LANDSCAPED OPEN SPACE AREA=2,257.5m²
- EXTERIOR SIDE YARD LANDSCAPED OPEN SPACE AREA=1,650.1m²

SEPT. 30, 2024
DATE

NICHOLAS P. MUTH
ONTARIO LAND SURVEYOR

A. J. Clarke and Associates Ltd.
SURVEYORS • ENGINEERS • PLANNERS
25 MAIN STREET WEST, SUITE 300
HAMILTON, ONTARIO, L8P 1H1
TEL. 905-528-8761 FAX 905-528-2289
email: ajc@ajclarke.com

DRAWN BY: TL/LH CHECKED BY: NPM PROJECT No. 248035 INDEX No. E-18904

© COPYRIGHT, 2024 A. J. CLARKE & ASSOCIATES LTD.
THE REPRODUCTION, ALTERATION OR USE OF THIS REPORT, IN WHOLE OR IN PART, WITHOUT THE EXPRESS PERMISSION OF A. J. CLARKE & ASSOCIATES LTD. IS STRICTLY PROHIBITED.