

INTEGRATION DATA

OBSERVED REFERENCE POINTS (ORPs): UTM ZONE 17, NAD83 (CSRS) (2010.0).
 COORDINATES TO URBAN ACCURACY PER SECTION 14 (2) OF O.REG 216/10.

POINT ID	EASTING	NORTHING
ORP (A)	652 359.59	4 772 874.86
ORP (B)	652 422.61	4 772 850.99

COORDINATES CANNOT, IN THEMSELVES, BE USED TO RE-ESTABLISH CORNERS OR BOUNDARIES SHOWN ON THIS PLAN.

THE RESULTANT TIE BETWEEN ORP (A) AND ORP (B) IS 67.40 (GROUND), N59°15'30"W

NOTES

BEARINGS ARE UTM GRID, DERIVED FROM OBSERVED REFERENCE POINTS A AND B, BY REAL TIME NETWORK (RTN) OBSERVATIONS, UTM ZONE 17, NAD83 (CSRS)(2010.0).

DISTANCES ARE GROUND AND CAN BE CONVERTED TO GRID BY MULTIPLYING BY THE COMBINED SCALE FACTOR OF 0.999861

SCHEDULE

PART	LOT	PLAN	PIN	AREA
1	PART OF 21	87	ALL OF 64305-0754 (LT)	414 sq.m
2				515.9 sq.m

PLAN 59R-16791

Received and deposited

September 30th, 2020

Larissa Arseneau

Representative for the
 Land Registrar for the
 Land Titles Division of
 Niagara South (No.59)

RYSDALE STREET
 (BY PLAN 87)
 PIN 64305-0127 (LT)

NE CORNER
 LOT 21, PLAN 87

PART 3
 PLAN 59R-12348
 PIN 64305-0752 (LT)

PLAN OF SURVEY OF
PART LOT 21
REGISTERED PLAN 87
 CITY OF NIAGARA FALLS
 REGIONAL MUNICIPALITY OF NIAGARA

SCALE 1 : 250



THE INTENDED PLOT SIZE OF THIS PLAN IS 457mm IN WIDTH BY 356mm IN HEIGHT WHEN PLOTTED AT A SCALE OF 1:250

J. D. BARNES LIMITED

METRIC DISTANCES AND/OR COORDINATES SHOWN ON THIS PLAN ARE IN METRES AND CAN BE CONVERTED TO FEET BY DIVIDING BY 0.3048.

SURVEYOR'S CERTIFICATE

I CERTIFY THAT:

1. THIS SURVEY AND PLAN ARE CORRECT AND IN ACCORDANCE WITH THE SURVEYS ACT, THE SURVEYORS ACT AND THE LAND TITLES ACT AND THE REGULATIONS MADE UNDER THEM.
2. THE SURVEY WAS COMPLETED ON JULY 15, 2020

SEPTEMBER 17, 2020
 DATE

Alan J. Heywood
 ALLAN J. HEYWOOD
 ONTARIO LAND SURVEYOR

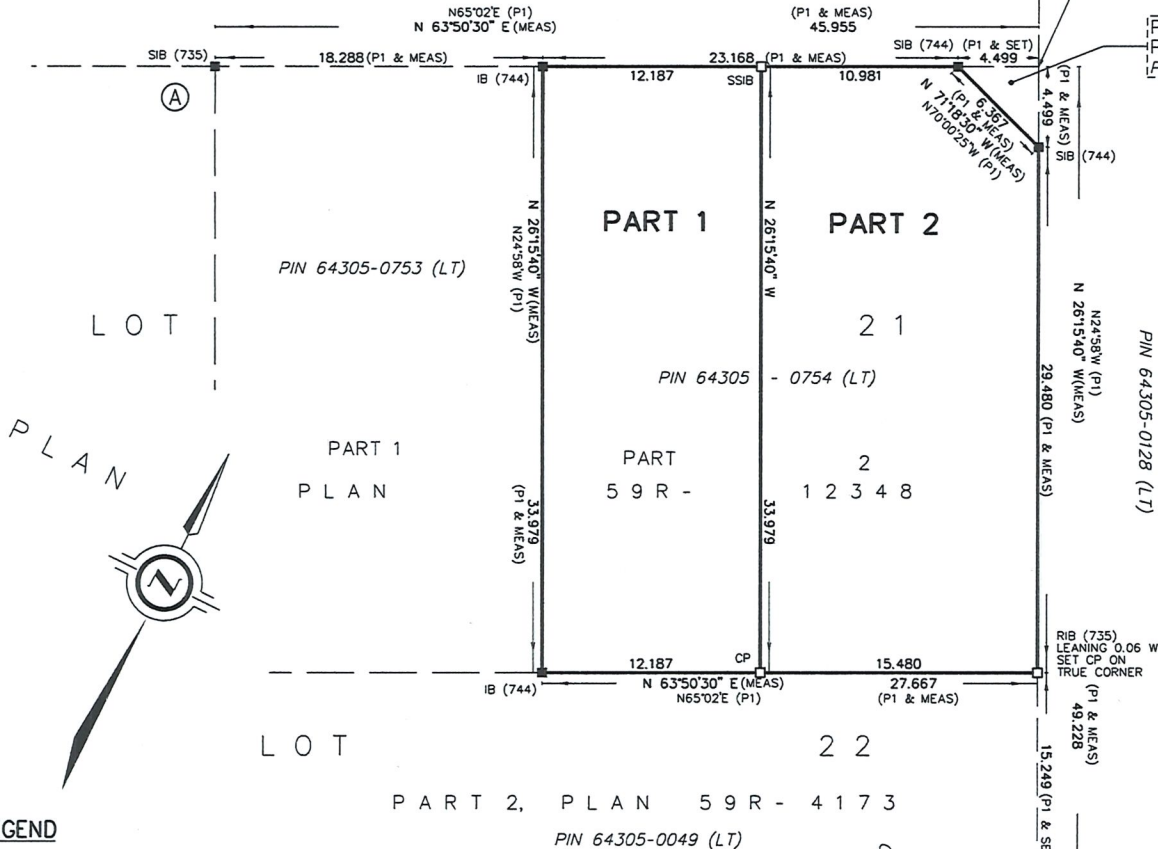
THIS PLAN OF SURVEY RELATES TO A.O.L.S. PLAN SUBMISSION FORM #2121290

J.D. BARNES LIMITED SURVEYING
 MAPPING
 GIS

LAND INFORMATION SPECIALISTS
 4318 PORTAGE ROAD - UNIT 2, NIAGARA FALLS, ON L2E 6A4
 T: (905) 358-3693 F: (905) 358-6224 www.jdbarnes.com

DRAWN BY: TW	CHECKED BY: AH	REFERENCE NO.: 20-16-025-00
FILE: G:\2020\20-16-025\00\Drawing\20-16-025 REF.dgn		

PLOTTED: 9/24/2020



LEGEND

- DENOTES SURVEY MONUMENT FOUND
- DENOTES SURVEY MONUMENT SET
- SIB DENOTES STANDARD IRON BAR
- SSIB DENOTES SHORT STANDARD IRON BAR
- IB DENOTES IRON BAR
- RIB DENOTES ROUND IRON BAR
- CP DENOTES CONCRETE PIN AND WASHER
- MEAS DENOTES MEASURED
- P1 DENOTES PLAN 59R-12348
- 735 DENOTES K.T. HOWE, O.L.S.
- 744 DENOTES MATTHEWS, CAMERON, HEYWOOD-KERRY T. HOWE SURVEYING LTD.
- 1399 DENOTES W.A. MASCOE, O.L.S.

ALL SET SSIB MONUMENTS WERE USED DUE TO LACK OF OVERBURDEN AND/OR PROXIMITY OF UNDERGROUND UTILITIES IN ACCORDANCE WITH SECTION 11 (4) OF O.REG. 525/91.