

LEGEND

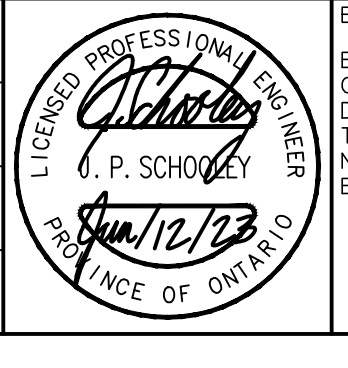
WV	EX WATER VALVE
WC	EX WATER VALVE CHAMBER
HYD	EX HYDRANT
CB	EX CATCHBASIN
DCB	EX DOUBLE CATCHBASIN
CBM	EX CATCHBASIN MANHOLE
STM	EX STORM MANHOLE
SAN	EX SANITARY MANHOLE
PLUG	EX PLUG
HP	EX HYDRO POLE
LS	EX LIGHT STANDARD
---	EX WATERMAIN
---	EX STORM SEWER
---	EX SANITARY SEWER

#	REVISION	DATE	INIT
0	ISSUED FOR APPROVAL	2023-06-08	ZC

NOTES:

1. THE POSITION OF POLE LINES, CONDUITS, WATERMANS, SEWER, AND OTHER UNDERGROUND AND OVERGROUND UTILITIES AND STRUCTURES IS NOT NECESSARILY SHOWN ON THE CONTRACT DRAWINGS AND, WHERE SHOWN, THE ACCURACY OF THE POSITION OF SUCH UTILITIES AND STRUCTURES IS NOT GUARANTEED. BEFORE STARTING WORK, THE CONTRACTOR SHALL INFORM HIMSELF OF THE EXACT LOCATION OF ALL SUCH UTILITIES AND STRUCTURES AND SHALL ASSUME ALL LIABILITY FOR DAMAGE TO THEM.
2. PROPERTY LINES WERE PLOTTED USING REGISTERED PLANS AND BARS LOCATED IN THE FIELD. TO VERIFY THE ACCURACY OF THESE PROPERTY LINES, A LEGAL SURVEY SHOULD BE PERFORMED PRIOR TO CONSTRUCTION.
3. ALL CONSTRUCTION MUST COMPLY WITH THE NIAGARA PENINSULA STANDARD CONTRACT DOCUMENT.

DRAFTING
GS/ZC
DESIGN
JS
CHECKED BY
JS
APPROVED BY
JS



BENCHMARK:
ELEVATIONS HEREON ARE GEODETIC AND WERE DERIVED FROM THE TOPNET RKT NETWORK, NAD83 CSRS, VERSION 3, EPOC 2010.

7302 KALAR ROAD, NIAGARA FALLS
EXISTING CONDITIONS PLAN

CONSULTANT FILE No.	2197
DATE	2023-06-12
PRINTED	2023-06-12
SCALE	1:300 m
REF No.	
DWG No.	2197-ECP
REV	0