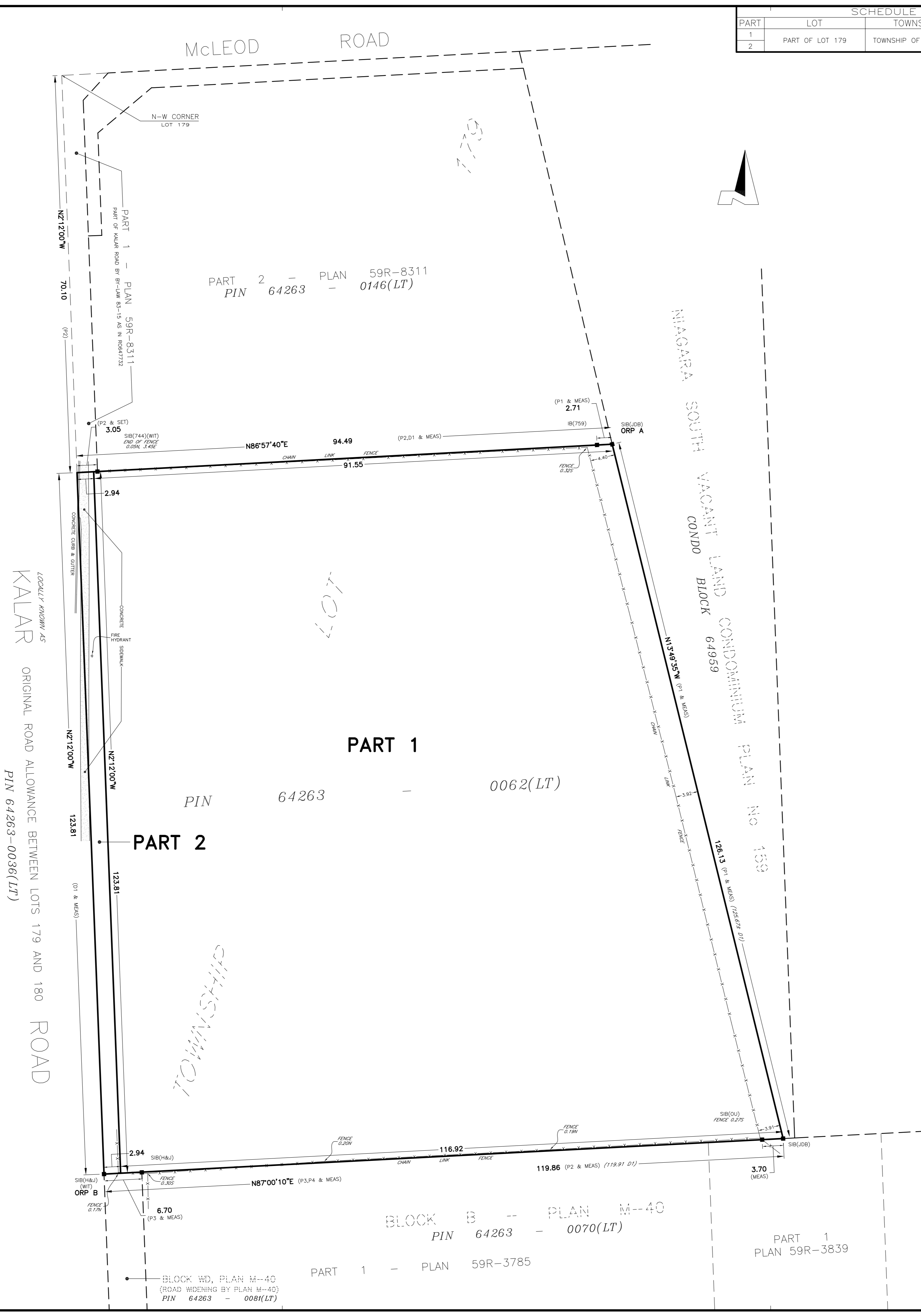


SCHEDULE			
PART	LOT	TOWNSHIP	PIN
1	PART OF LOT 179	TOWNSHIP OF STAMFORD	ALL OF PIN 64263-0062(LT)
2			



PLAN OF SURVEY OF
PART OF LOT 179
 GEOGRAPHIC TOWNSHIP OF STAMFORD
 IN THE
CITY OF NIAGARA FALLS
 REGIONAL MUNICIPALITY OF NIAGARA
 SCALE 1 : 400

0 5 10 20 40 METRES

DONALD G. CHAMBERS
 ONTARIO LAND SURVEYOR

THE INTENDED PLOT SIZE OF THIS PLAN IS 645mm IN WIDTH BY 605mm IN HEIGHT WHEN PLOTTED AT A SCALE OF 1:400

METRIC NOTE
 DISTANCES AND COORDINATES SHOWN ON THIS PLAN ARE IN METRES AND CAN BE CONVERTED TO FEET BY DIVIDING BY 0.3048.

BEARING NOTE
 BEARINGS ARE UTM GRID, DERIVED FROM OBSERVED REFERENCE POINTS A AND B BY REAL TIME NETWORK (RTN) OBSERVATIONS, UTM ZONE 17, NAD83 (CSRS) (2010).
 FOR BEARING COMPARISONS, A ROTATION OF 1°18'20" COUNTERCLOCKWISE WAS APPLIED TO P2, A ROTATION OF 1°17'30" COUNTERCLOCKWISE WAS APPLIED TO P3 AND P4, AND A ROTATION OF 1°24'20" COUNTERCLOCKWISE WAS APPLIED TO D1.

DISTANCE NOTE
 DISTANCES ARE GROUND AND CAN BE CONVERTED TO GRID BY MULTIPLYING BY THE COMBINED SCALE FACTOR OF 0.999861.

OBSERVED REFERENCE POINTS (ORPs): UTM ZONE 17, NAD 83 (CSRS) (2010). CO-ORDINATES TO URBAN ACCURACY PER SEC. 14 (2) OF O.REG. 216/10

POINT ID	NORTHING	EASTING
ORP A	4770193.79	651914.15
ORP B	4770065.08	651824.59

CO-ORDINATES CANNOT, IN THEMSELVES, BE USED TO RE-ESTABLISH CORNERS OR BOUNDARIES SHOWN ON THIS PLAN.

LEGEND

—■—	DENOTES	SURVEY MONUMENT FOUND
—□—		SURVEY MONUMENT SET
SIB		STANDARD IRON BAR
SSIB		SHORT STANDARD IRON BAR
IB		IRON BAR
MEAS		MEASURED
WIT		WITNESS
OU		ORIGIN UNKNOWN
N/S/E/W		NORTH/SOUTH/EAST/WEST
PIN		PROPERTY IDENTIFICATION NUMBER
P1		NIAGARA SOUTH VACANT LAND CONDOMINIUM PLAN 159
P2		DEPOSITED PLAN 59R-8311
P3		PLAN M-40
P4		DEPOSITED PLAN 59R-3839
D1		INSTRUMENT No R0484133 - PIN 64263-0062(LT)
744		R. J. MATTHEWS, O.L.S.
759		C. J. CLARKE, O.L.S.
H&J		HOLDINGS & JONES, O.L.S.
JDB		J. D. BARNES, O.L.S.

SURVEYOR'S CERTIFICATE
 I CERTIFY THAT:
 1) THIS SURVEY AND PLAN ARE CORRECT AND IN ACCORDANCE WITH THE SURVEYS ACT AND THE SURVEYORS ACT AND THE REGULATIONS MADE UNDER THEM;
 2) THE SURVEY WAS COMPLETED ON THE 26th DAY OF MARCH, 2024.

APRIL 23, 2024
 DATE

Donald G. Chambers
 DONALD G. CHAMBERS, B. Sc., O.L.S.

THIS PLAN OF SURVEY RELATES TO A.O.L.S. PLAN SUBMISSION FORM V-52327

CHAMBERS AND ASSOCIATES SURVEYING LTD
 12 THOROLD ROAD EAST (905) 735-7841 / 735-7844
 WELLAND ONTARIO FAX (905) 735-7333
 L3C 3T2 www.cas1-surveying.com

DRAWN BY: DHT MSCAD: 20011-2_MS DWG: 20011-2 FILE NO: 20-11-2