

1 WEST ELEVATION (KALAR ROAD)
1:200

3100.00 37.71'	224750.000	ROOF LEVEL
3450	221300.000	LEVEL 12
3450	217850.000	LEVEL 11
3450	214400.000	LEVEL 10
3450	210950.000	LEVEL 9
3450	207500.000	LEVEL 8
3450	204050.000	LEVEL 7
3450	200600.000	LEVEL 6
3450	197150.000	LEVEL 5
3450	193700.000	LEVEL 4
3450	190250.000	LEVEL 3
3450	186800.000	LEVEL 2
3450	183350.000	LEVEL 1
4000 131.17'	179350.000	PARKING LEVEL P1
2800 92.14'	176550.000	PARKING LEVEL P2

ALL CONTRACTORS AND/OR TRADES SHALL VERIFY ALL DIMENSIONS, NOTES, SITE AND REPORT ANY DISCREPANCIES PRIOR TO COMMENCEMENT OF THE WORK. THIS DRAWING NOT TO BE SCALED. ALL DRAWINGS, PRINTS AND RELATED DOCUMENTS ARE THE PROPERTY OF THE ARCHITECT AND MUST BE RETURNED UPON REQUEST. REPRODUCTION OF DRAWINGS AND RELATED DOCUMENTS IN PART OR IN WHOLE IS STRICTLY FORBIDDEN WITHOUT WRITTEN CONSENT. DRAWINGS TO BE FOR THE PURPOSE FOR WHICH THEY ARE ISSUED.

No.	DATE:	DESCRIPTION:	BY:
A	04-10-2024	ISSUED FOR SITE PLAN APPROVAL	ACK

COMMISSION:
RESIDENTIAL DEVELOPMENT
KALAR/ MCLEOD, NIAGARA FALLS, ON

A · C · K
architects
STUDIO INC.
Architectural Office:
290 Glendale Ave. St. Catharines, ON, L2T 2L3
905 984 5545

SHEET TITLE:
EXTERIOR ELEVATION WEST (KALAR RD)

DRAWN BY:	XX	DRAWING No.:	A7.00
CHECKED BY:	XX		
DATE ISSUED:	04-10-2024		
PROJECT No.:	2006-131		

V U T S R Q P O N M L K J I H G F E D C B A



1100	7'7 1/4"	T/O ROOF	228200.000
		ROOF LEVEL	224750.000
3450	11'3 3/4"	LEVEL 12	221300.000
3450	11'3 3/4"	LEVEL 11	217850.000
3450	11'3 3/4"	LEVEL 10	214400.000
3450	11'3 3/4"	LEVEL 9	210950.000
3450	11'3 3/4"	LEVEL 8	207500.000
3450	11'3 3/4"	LEVEL 7	204050.000
3450	11'3 3/4"	LEVEL 6	200600.000
3450	11'3 3/4"	LEVEL 5	197150.000
3450	11'3 3/4"	LEVEL 4	193700.000
3450	11'3 3/4"	LEVEL 3	190250.000
3450	11'3 3/4"	LEVEL 2	186800.000
3450	11'3 3/4"	LEVEL 1	183350.000
4000	13'5 1/2"	PARKING LEVEL P1	179950.000
2800	9'2 1/4"	PARKING LEVEL P2	176550.000

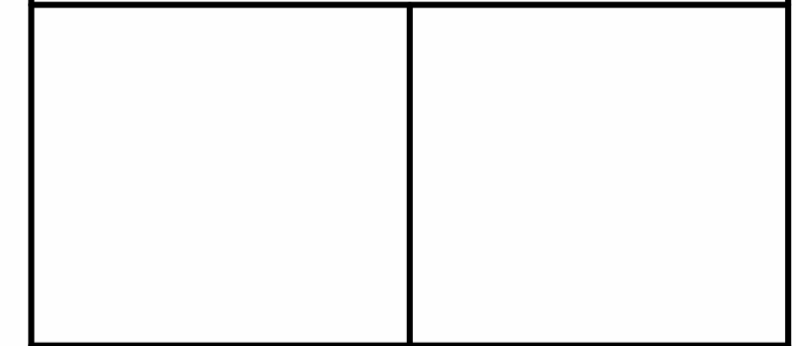
ALL CONTRACTORS AND/OR TRADES SHALL VERIFY ALL DIMENSIONS, NOTES, SITE AND REPORT ANY DISCREPANCIES PRIOR TO COMMENCEMENT OF THE WORK. THIS DRAWING NOT TO BE SCALED. ALL DRAWINGS, PRINTS AND RELATED DOCUMENTS ARE THE PROPERTY OF THE ARCHITECT AND MUST BE RETURNED UPON REQUEST. REPRODUCTION OF DRAWINGS AND RELATED DOCUMENTS IN PART OR IN WHOLE IS STRICTLY FORBIDDEN WITHOUT WRITTEN CONSENT. DRAWINGS TO BE FOR THE PURPOSE FOR WHICH THEY ARE ISSUED.

No.	DATE:	DESCRIPTION:	BY:
A	04-10-2024	ISSUED FOR SITE PLAN APPROVAL	ACK

COMMISSION:

RESIDENTIAL DEVELOPMENT

KALAR/ MCLEOD, NIAGARA FALLS, ON



Architectural Office:
 290 Glendale Ave. St. Catharines, ON, L2T 2L3
 905 984 5545

SHEET TITLE:

EXTERIOR ELEVATION SOUTH (McLEOD RD)

DRAWN BY:	XX	DRAWING No.:	
CHECKED BY:	XX		
DATE ISSUED:	04-10-2024		A7.01
PROJECT No.:	2006-131		

1 SOUTH ELEVATION (McLEOD ROAD)
 1:200



T/O ROOF	228200.000
ROOF LEVEL	224750.000
LEVEL 12	221300.000
LEVEL 11	217850.000
LEVEL 10	214400.000
LEVEL 9	210950.000
LEVEL 8	207500.000
LEVEL 7	204050.000
LEVEL 6	200600.000
LEVEL 5	197150.000
LEVEL 4	193700.000
LEVEL 3	190250.000
LEVEL 2	186800.000
LEVEL 1	183350.000
PARKING LEVEL P1	179950.000
PARKING LEVEL P2	176850.000

1 NORTH ELEVATION
1:200

ALL CONTRACTORS AND/OR TRADES SHALL VERIFY ALL DIMENSIONS, NOTES, SITE AND REPORT ANY DISCREPANCIES PRIOR TO COMMENCEMENT OF THE WORK. THIS DRAWING NOT TO BE SCALED. ALL DRAWINGS, PRINTS AND RELATED DOCUMENTS ARE THE PROPERTY OF THE ARCHITECT AND MUST BE RETURNED UPON REQUEST. REPRODUCTION OF DRAWINGS AND RELATED DOCUMENTS IN PART OR IN WHOLE IS STRICTLY FORBIDDEN WITHOUT WRITTEN CONSENT. DRAWINGS TO BE FOR THE PURPOSE FOR WHICH THEY ARE ISSUED.

No.	DATE:	DESCRIPTION:	BY:
A	04-10-2024	ISSUED FOR SITE PLAN APPROVAL	ACK

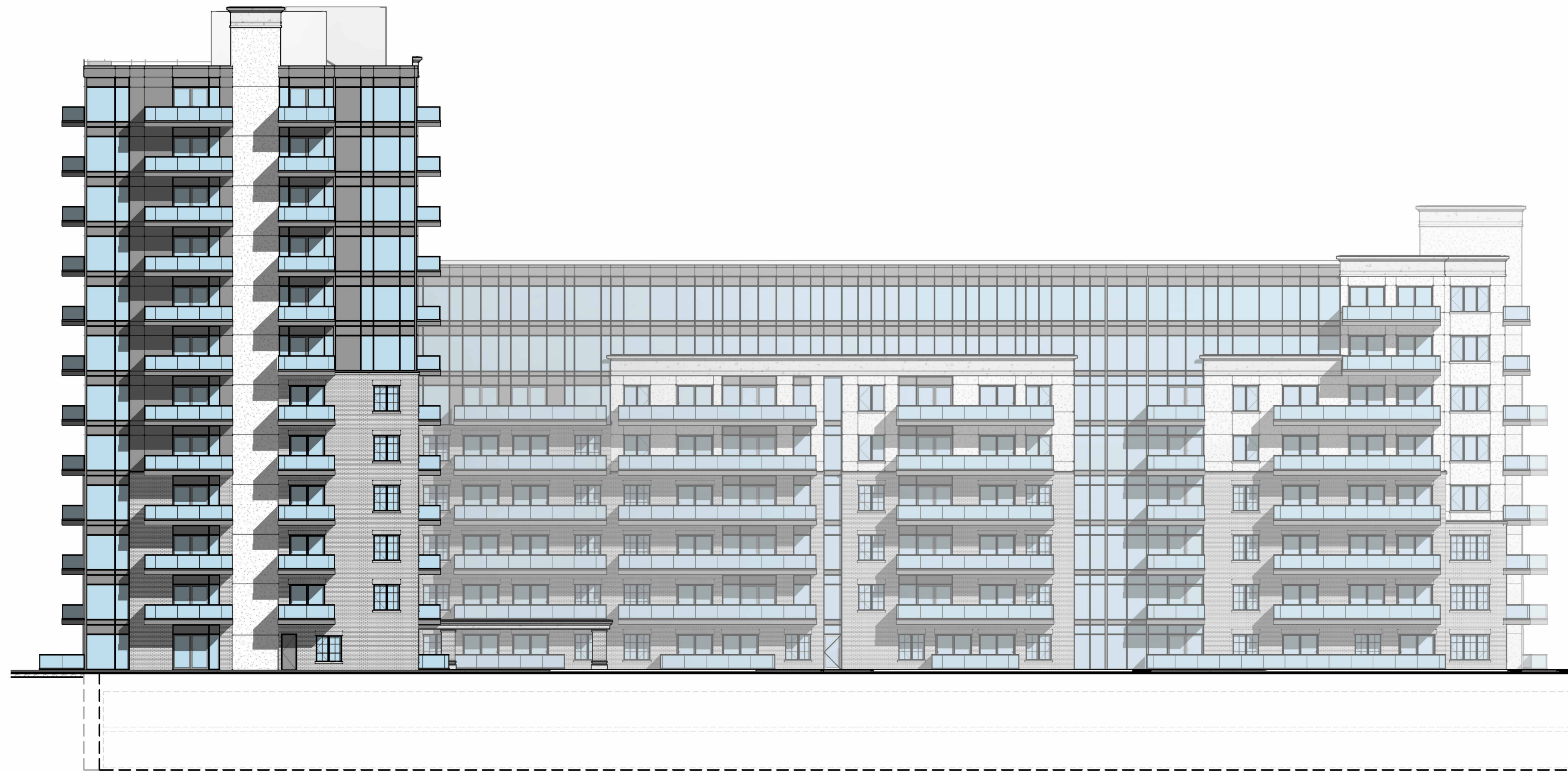
COMMISSION:
RESIDENTIAL DEVELOPMENT
KALAR/ MCLEOD, NIAGARA FALLS, ON

A · C · K
architects
STUDIO INC.
Architectural Office:
290 Glendale Ave. St. Catharines, ON, L2T 2L3
905 984 5545

SHEET TITLE:
EXTERIOR ELEVATION NORTH FACADE

DRAWN BY:	XX	DRAWING No.:	A7.02
CHECKED BY:	XX		
DATE ISSUED:	04-10-2024		
PROJECT No.:	2006-131		

28 27 26 25 24 23 22 21 20 19 18 17 16 15 14 13 12 11 10 9 8x 8 7 6 5 4 3 2 1



1100 377.4"	T/O ROOF	228200.000
	ROOF LEVEL	224750.000
3450 1133.4"	LEVEL 12	221300.000
3450 1133.4"	LEVEL 11	217850.000
3450 1133.4"	LEVEL 10	214400.000
3450 1133.4"	LEVEL 9	210950.000
3450 1133.4"	LEVEL 8	207500.000
3450 1133.4"	LEVEL 7	204050.000
3450 1133.4"	LEVEL 6	200600.000
3450 1133.4"	LEVEL 5	197150.000
3450 1133.4"	LEVEL 4	193700.000
3450 1133.4"	LEVEL 3	190250.000
3450 1133.4"	LEVEL 2	186800.000
3450 1133.4"	LEVEL 1	183350.000
4000 1311.7"	PARKING LEVEL P1	179950.000
2800 921.4"	PARKING LEVEL P2	176550.000

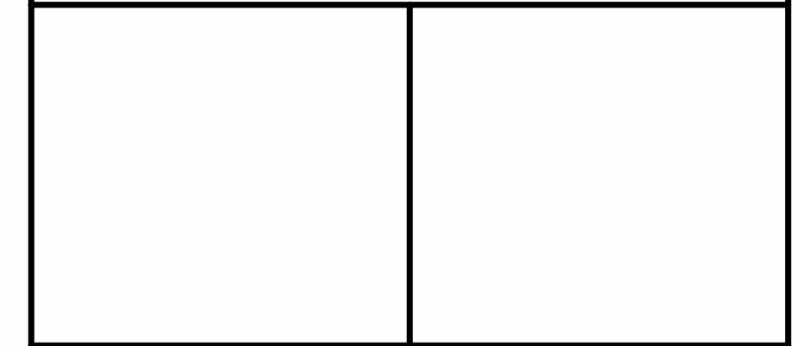
ALL CONTRACTORS AND/OR TRADES SHALL VERIFY ALL DIMENSIONS, NOTES, SITE AND REPORT ANY DISCREPANCIES PRIOR TO COMMENCEMENT OF THE WORK. THIS DRAWING NOT TO BE SCALED. ALL DRAWINGS, PRINTS AND RELATED DOCUMENTS ARE THE PROPERTY OF THE ARCHITECT AND MUST BE RETURNED UPON REQUEST. REPRODUCTION OF DRAWINGS AND RELATED DOCUMENTS IN PART OR IN WHOLE IS STRICTLY FORBIDDEN WITHOUT WRITTEN CONSENT. DRAWINGS TO BE FOR THE PURPOSE FOR WHICH THEY ARE ISSUED.

No.	DATE:	DESCRIPTION:	BY:
A	04-10-2024	ISSUED FOR SITE PLAN APPROVAL	ACK

COMMISSION:

RESIDENTIAL DEVELOPMENT

KALAR/ MCLEOD, NIAGARA FALLS, ON



Architectural Office:
290 Glendale Ave. St. Catharines, ON, L2T 2L3
905 984 5545

SHEET TITLE:

EXTERIOR ELEVATION EAST FACADE

DRAWN BY:	XX	DRAWING No.:	A7.03
CHECKED BY:	XX		
DATE ISSUED:	04-10-2024		
PROJECT No.:	2006-131		

1 EAST ELEVATION
1:200