

T/O ROOF	228.200 m
LEVEL 13	224.750 m
LEVEL 12	221.300 m
LEVEL 11	217.850 m
LEVEL 10	214.400 m
LEVEL 9	210.950 m
LEVEL 8	207.500 m
LEVEL 7	204.050 m
LEVEL 6	200.600 m
LEVEL 5	197.150 m
LEVEL 4	193.700 m
LEVEL 3	190.250 m
LEVEL 2	186.800 m
LEVEL 1	183.350 m
PARKING LEVEL P1	179.350 m
PARKING LEVEL P2	176.550 m
GROUND WATER TABLE RANGE (HIGH)	175.900 m
GROUND WATER TABLE (LOW)	175.300 m

ALL CONTRACTORS AND/OR TRADES SHALL VERIFY ALL DIMENSIONS, NOTES, SITE AND REPORT ANY DISCREPANCIES PRIOR TO COMMENCEMENT OF THE WORK. THIS DRAWING NOT TO BE SCALED. ALL DRAWINGS, PRINTS AND RELATED DOCUMENTS ARE THE PROPERTY OF THE ARCHITECT AND MUST BE RETURNED UPON REQUEST. REPRODUCTION OF DRAWINGS AND RELATED DOCUMENTS IN PART OR IN WHOLE IS STRICTLY FORBIDDEN WITHOUT WRITTEN CONSENT. DRAWINGS TO BE FOR THE PURPOSE FOR WHICH THEY ARE ISSUED.

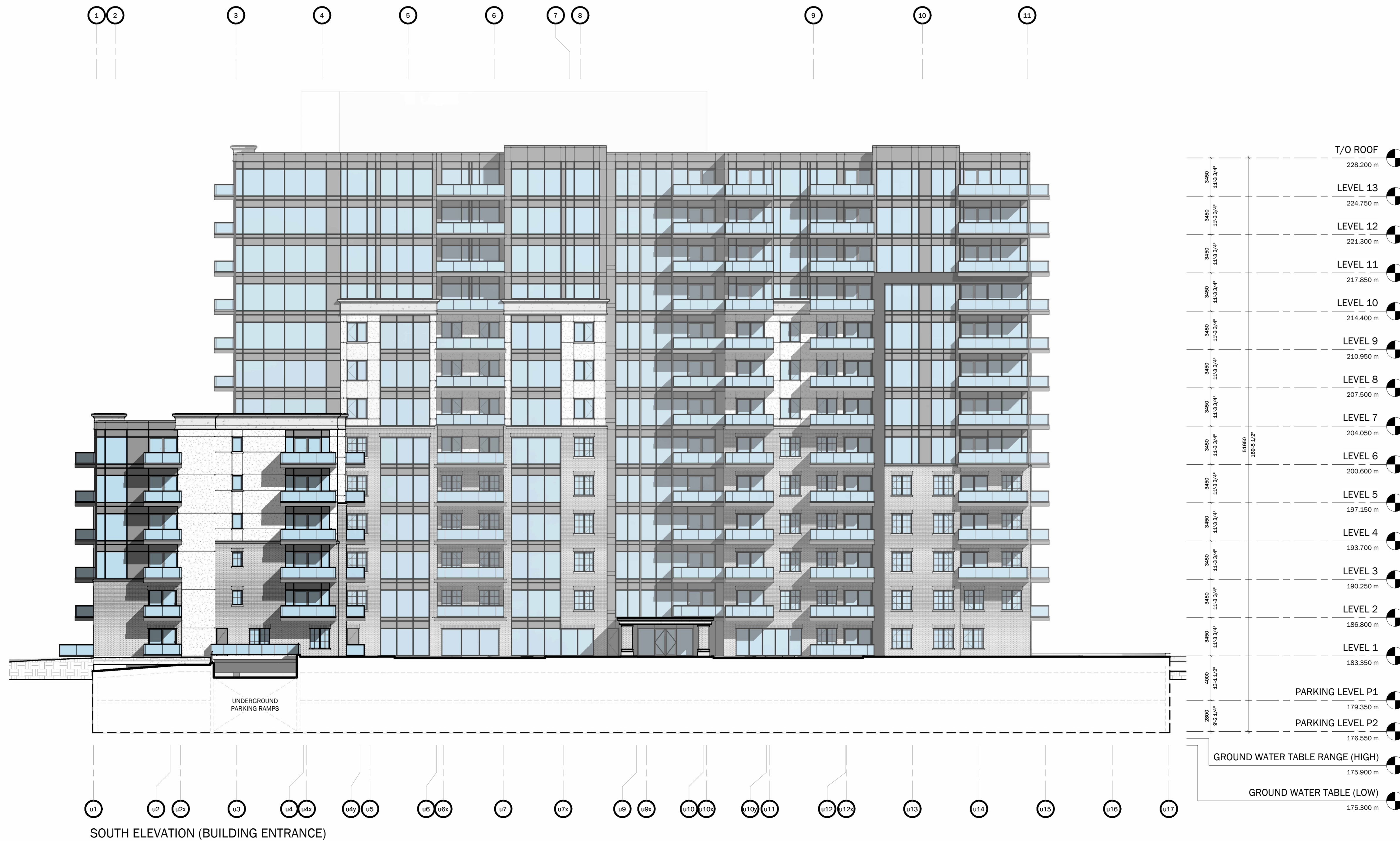
No.	DATE:	DESCRIPTION:	BY:
A	02-12-2024	ISSUED FOR COORDINATION	ACK
B	04-10-2024	ISSUED FOR SITE PLAN APPROVAL	ACK

COMMISSION:
RESIDENTIAL DEVELOPMENT
KALAR/McLEOD, NIAGARA FALLS, ON

A · C · K
architects
STUDIO INC.
Architectural Office:
290 Glendale Ave. St. Catharines, ON, L2T 2L3
905 984 5545

SHEET TITLE:
EXTERIOR ELEVATIONS EAST & WEST

DRAWN BY:	XX	DRAWING No.:
CHECKED BY:	XX	A7.00
DATE ISSUED:	04-10-2024	
PROJECT No.:	2006-131	



ALL CONTRACTORS AND/OR TRADES SHALL VERIFY ALL DIMENSIONS, NOTES, SITE AND REPORT ANY DISCREPANCIES PRIOR TO COMMENCEMENT OF THE WORK. THIS DRAWING NOT TO BE SCALED. ALL DRAWINGS, PRINTS AND RELATED DOCUMENTS ARE THE PROPERTY OF THE ARCHITECT AND MUST BE RETURNED UPON REQUEST. REPRODUCTION OF DRAWINGS AND RELATED DOCUMENTS IN PART OR IN WHOLE IS STRICTLY FORBIDDEN WITHOUT WRITTEN CONSENT. DRAWINGS TO BE FOR THE PURPOSE FOR WHICH THEY ARE ISSUED.

No.	DATE:	DESCRIPTION:	BY:
A	02-12-2024	ISSUED FOR COORDINATION	ACK
B	04-10-2024	ISSUED FOR SITE PLAN APPROVAL	ACK

COMMISSION:

RESIDENTIAL DEVELOPMENT

KALAR/McLEOD, NIAGARA FALLS, ON

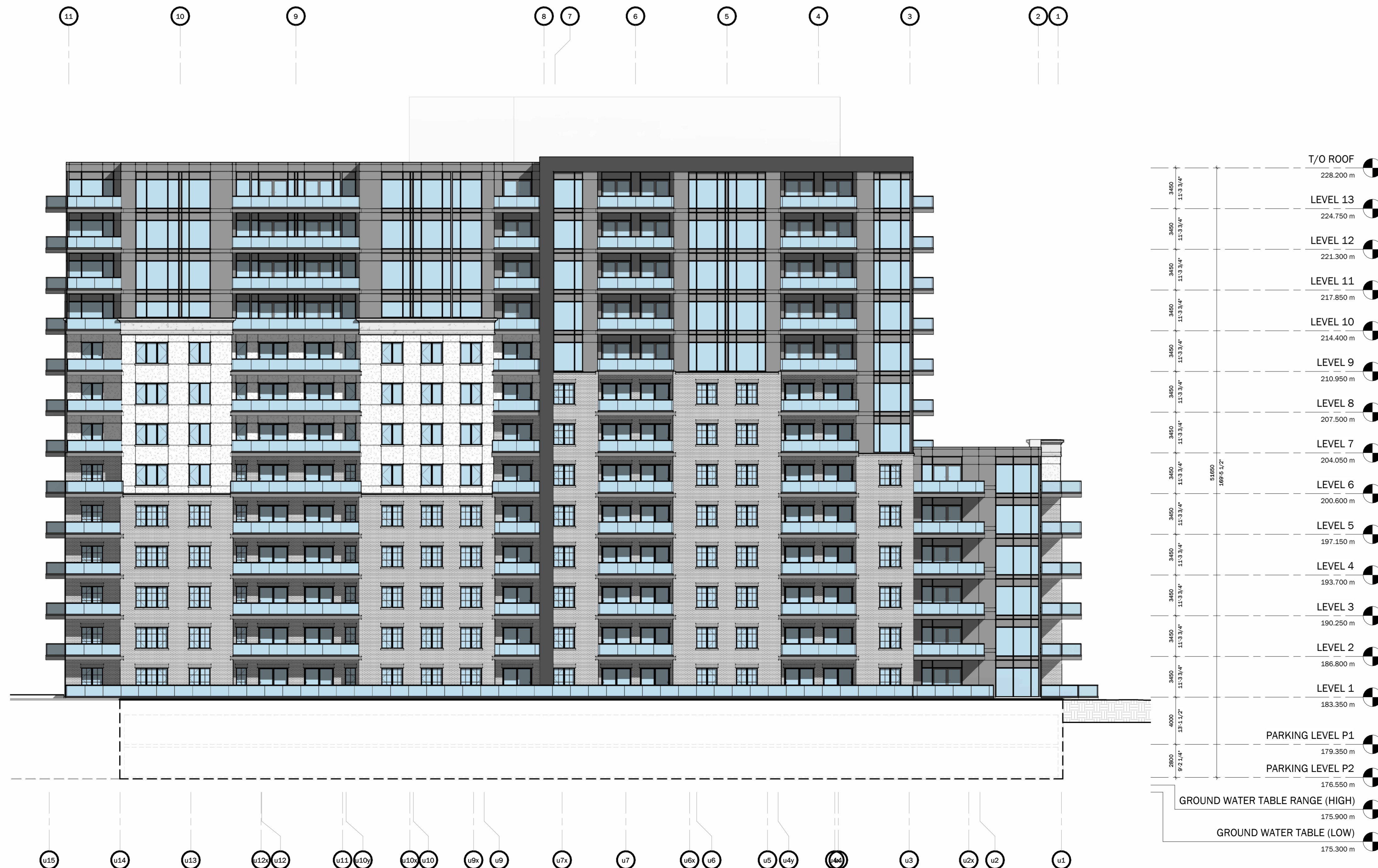
A · C · K
architects
STUDIO INC.

Architectural Office:
290 Glendale Ave. St. Catharines, ON, L2T 2L3
905 984 5545

SHEET TITLE:

EXTERIOR ELEVATION SOUTH

DRAWN BY:	XX	DRAWING No.:	A7.01
CHECKED BY:	XX		
DATE ISSUED:	04-10-2024		
PROJECT No.:	2006-131		



NORTH ELEVATION
1:200

ALL CONTRACTORS AND/OR TRADES SHALL VERIFY ALL DIMENSIONS, NOTES, SITE AND REPORT ANY DISCREPANCIES PRIOR TO COMMENCEMENT OF THE WORK. THIS DRAWING NOT TO BE SCALED. ALL DRAWINGS, PRINTS AND RELATED DOCUMENTS ARE THE PROPERTY OF THE ARCHITECT AND MUST BE RETURNED UPON REQUEST. REPRODUCTION OF DRAWINGS AND RELATED DOCUMENTS IN PART OR IN WHOLE IS STRICTLY FORBIDDEN WITHOUT WRITTEN CONSENT. DRAWINGS TO BE FOR THE PURPOSE FOR WHICH THEY ARE ISSUED.

No.	DATE	DESCRIPTION	BY:
A	02-12-2024	ISSUED FOR COORDINATION	ACK
B	04-10-2024	ISSUED FOR SITE PLAN APPROVAL	ACK

COMMISSION:

RESIDENTIAL DEVELOPMENT

KALAR/McLEOD, NIAGARA FALLS, ON

A · C · K
architects
STUDIO INC.

Architectural Office:
290 Glendale Ave. St. Catharines, ON, L2T 2L3
905 984 5545

SHEET TITLE:

EXTERIOR ELEVATION NORTH

DRAWN BY:	XX	DRAWING No.:	A7.02
CHECKED BY:	XX		
DATE ISSUED:	04-10-2024		
PROJECT No.:	2006-131		