

INTEGRATION DATA		
OBSERVED REFERENCE POINTS (ORPs): UTM ZONE 17, NAD83 (CSRS) (2010.0).		
COORDINATES TO URBAN ACCURACY PER SECTION 14 (2) OF O.REG 216/10.		
POINT ID	EASTING	NORTHING
ORP (A)	654 489.19	4 777 725.37
ORP (B)	654 652.21	4 777 667.26

COORDINATES CANNOT, IN THEMSELVES, BE USED TO RE-ESTABLISH CORNERS OR BOUNDARIES SHOWN ON THIS PLAN.

THE RESULTANT TIE BETWEEN ORP (A) AND ORP (B) IS 173.10 (GROUND), N70°22'50"W

NOTES

BEARINGS ARE UTM GRID, DERIVED FROM OBSERVED REFERENCE POINTS A AND B, BY REAL TIME NETWORK (RTN) OBSERVATIONS, UTM ZONE 17, NAD83 (CSRS)(2010.0).

DISTANCES ARE GROUND AND CAN BE CONVERTED TO GRID BY MULTIPLYING BY THE COMBINED SCALE FACTOR OF 0.999871.

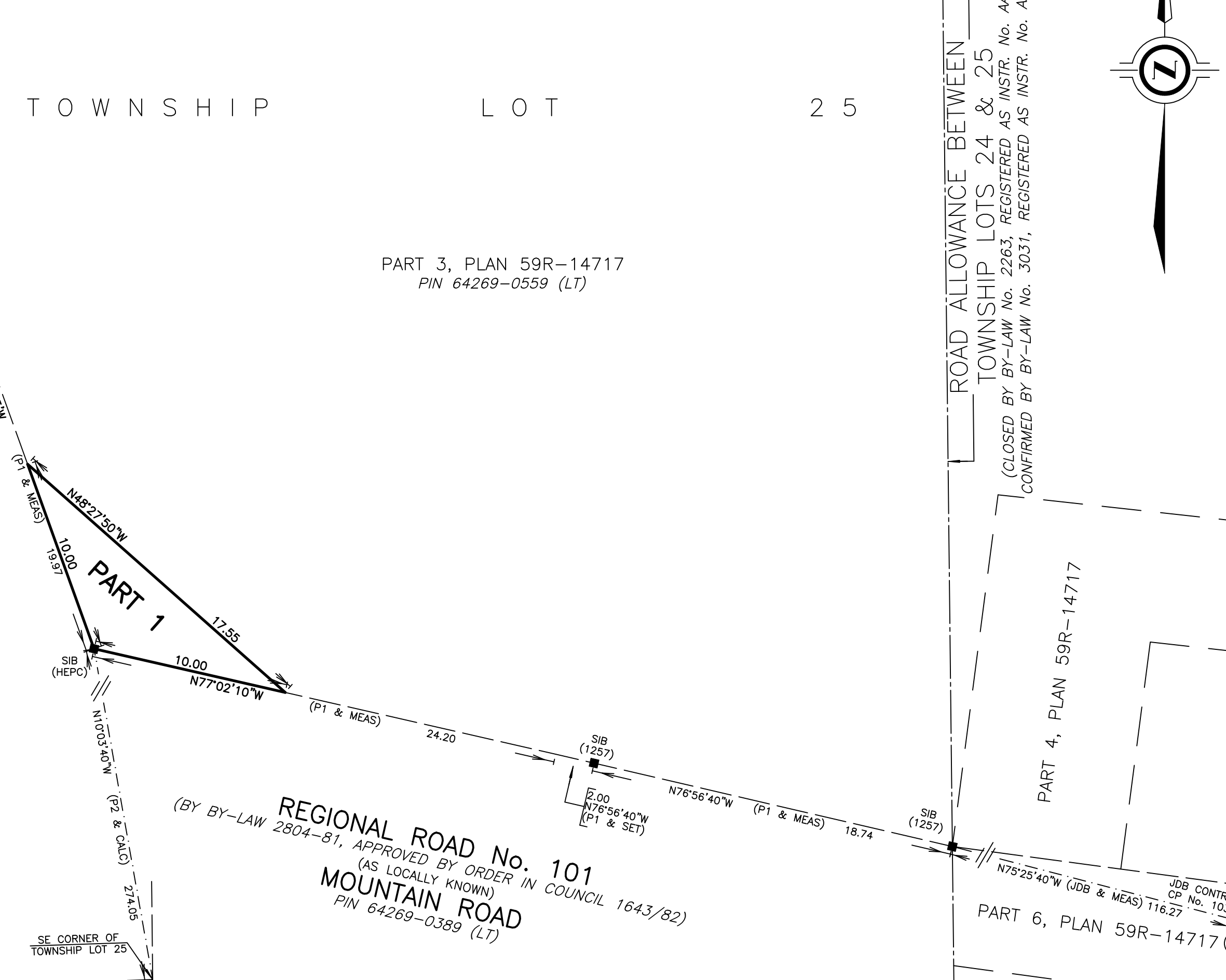
FOR BEARING COMPARISONS, A ROTATION OF 1°15'20" COUNTER-CLOCKWISE HAS BEEN APPLIED TO BEARINGS ON P2.

SCHEDULE				
PART	LOT	TOWNSHIP	PIN	AREA
1	PART OF 25	STAMFORD	PART OF 64269-0559 (LT)	41.9 sq.m

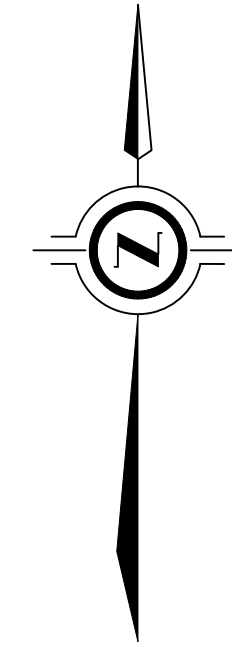
STAMFORD TOWNSHIP LOT 25

PART 3, PLAN 59R-14717
PIN 64269-0559 (LT)

REGIONAL ROAD No. 100
(BY BY-LAW 2804-81, APPROVED BY ORDER IN COUNCIL 1643/82 AND DEDICATED BY BY-LAW 90-1999, REGISTERED AS INSTR. No. 1141498)
ST. PAUL AVENUE
PIN 64269-0002 (LT)



ROAD ALLOWANCE BETWEEN TOWNSHIP LOTS 24 & 25
(CLOSED BY BY-LAW No. 2263, REGISTERED AS INSTR. No. A47308, CONFIRMED BY BY-LAW No. 3031, REGISTERED AS INSTR. No. A412960)



PLAN OF SURVEY OF
PART OF TOWNSHIP LOT 25

GEOGRAPHIC TOWNSHIP OF STAMFORD
NOW IN THE
CITY OF NIAGARA FALLS
REGIONAL MUNICIPALITY OF NIAGARA

SCALE 1 : 200



THE INTENDED PLOT SIZE OF THIS PLAN IS 610mm IN WIDTH BY 356mm IN HEIGHT WHEN PLOTTED AT A SCALE OF 1:200

J. D. BARNES LIMITED

METRIC DISTANCES AND/OR COORDINATES SHOWN ON THIS PLAN ARE IN METRES AND CAN BE CONVERTED TO FEET BY DIVIDING BY 0.3048.

SURVEYOR'S CERTIFICATE

- I CERTIFY THAT:
1. THIS SURVEY AND PLAN ARE CORRECT AND IN ACCORDANCE WITH THE SURVEYS ACT, THE SURVEYORS ACT AND THE LAND TITLES ACT AND THE REGULATIONS MADE UNDER THEM.
 2. THE SURVEY WAS COMPLETED ON

DATE _____ ALLAN J. HEYWOOD
ONTARIO LAND SURVEYOR

THIS PLAN OF SURVEY RELATES TO AOLS PLAN SUBMISSION FORM NUMBER V-57769

LEGEND

■	DENOTES	SURVEY MONUMENT FOUND
□	DENOTES	SURVEY MONUMENT SET
SIB	DENOTES	STANDARD IRON BAR
CP	DENOTES	CONCRETE PIN AND WASHER
MEAS	DENOTES	MEASURED
1257	DENOTES	R. LAROCQUE, O.L.S.
HEPC	DENOTES	HYDRO-ELECTRIC POWER COMMISSION OF ONTARIO
JDB	DENOTES	J.D. BARNES LIMITED
P1	DENOTES	PLAN 59R-14717
P2	DENOTES	PLAN P-1907-25

N=NORTH / S=SOUTH / E=EAST / W=WEST

J.D. BARNES LIMITED
LAND INFORMATION SPECIALISTS
4318 PORTAGE ROAD - UNIT 2, NIAGARA FALLS, ON L2E 6A4
T: (905) 358-3693 F: (905) 358-6224 www.jdbarnes.com

DRAWN BY: JN	CHECKED BY: BM/AH	REFERENCE NO.: 17-16-504-02
-----------------	----------------------	--------------------------------