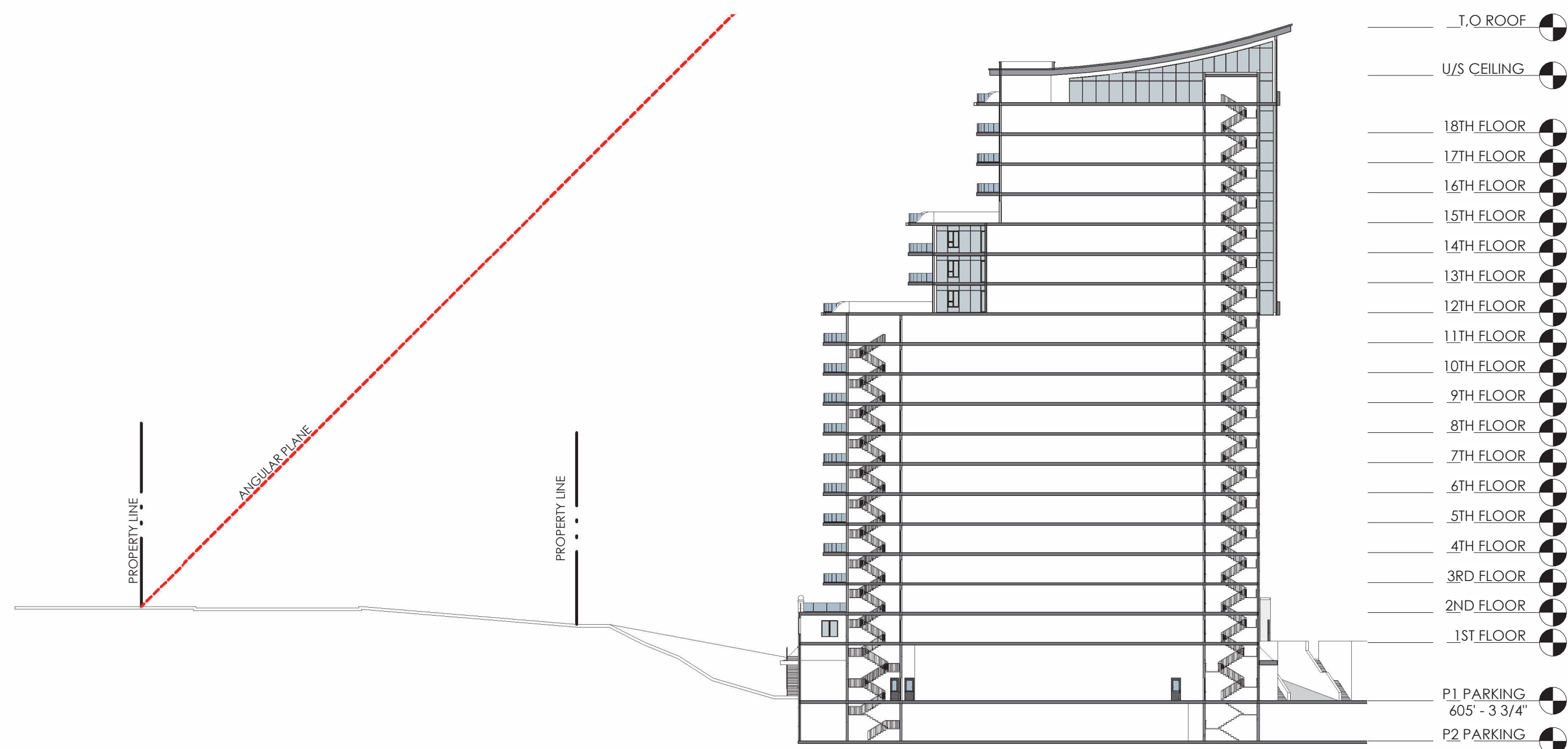


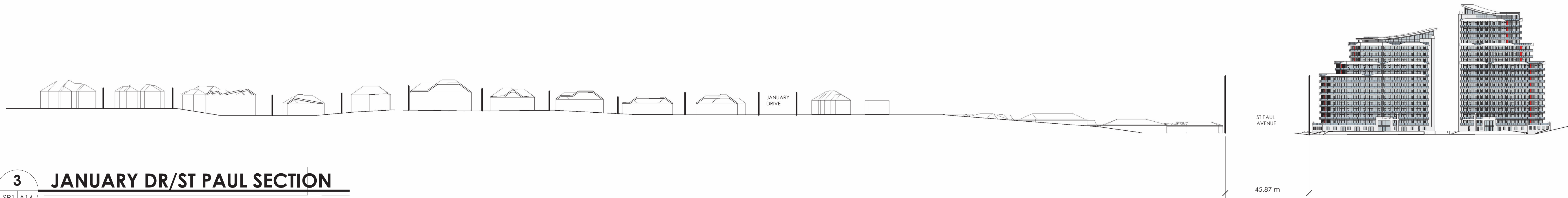
- T.O. ROOF
- U/S 15TH CEILING
- 15TH FLOOR
- 14TH FLOOR
- 13TH FLOOR
- 12TH FLOOR
- 11TH FLOOR
- 10TH FLOOR
- 9TH FLOOR
- 8TH FLOOR
- 7TH FLOOR
- 6TH FLOOR
- 5TH FLOOR
- 4TH FLOOR
- 3RD FLOOR
- 2ND FLOOR
- 1ST FLOOR
- P1 PARKING
- P2 PARKING

1 TOWER A - ANGULAR PLANE
 SP1 | A14
 1" = 40'-0"



- T.O. ROOF
- U/S CEILING
- 18TH FLOOR
- 17TH FLOOR
- 16TH FLOOR
- 15TH FLOOR
- 14TH FLOOR
- 13TH FLOOR
- 12TH FLOOR
- 11TH FLOOR
- 10TH FLOOR
- 9TH FLOOR
- 8TH FLOOR
- 7TH FLOOR
- 6TH FLOOR
- 5TH FLOOR
- 4TH FLOOR
- 3RD FLOOR
- 2ND FLOOR
- 1ST FLOOR
- P1 PARKING
- P2 PARKING

2 TOWER B - ANGULAR PLANE
 SP1 | A14
 1" = 40'-0"

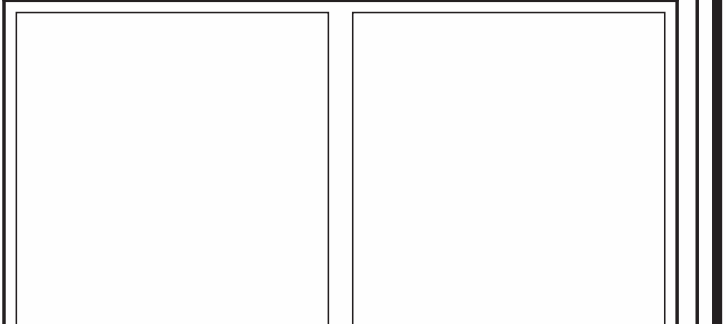


3 JANUARY DR/ST PAUL SECTION
 SP1 | A14
 1" = 100'-0"

GENERAL NOTES

NO.	DATE:	REVISION:	BY:
0	02/01/2022	MASSING CONCEPT	JKC
1	03/03/2022	ALT. SITE PLAN / MASSING	JKC
2	11/08/2023	REV. CONCEPT	JKC
3	02/08/2024	SHADOW STUDY	DD
4	02/12/2024	REV. ARCH PACKAGE	JKC
5	03/14/2024	ZBA+OPA SUBMISSION 1	JKC

COMMISSION:
ST PAUL DEVELOPMENT
 2430 ST PAUL AVE, NIAGARA FALLS, ON L2E 6S4



A · C · K
 architects
 STUDIO INC.
 Architectural Office:
 290 Glendale Ave. St. Catharines, ON, L2T 2L3
 905 984 5545

SHEET TITLE:
ANGULAR PLANE SECTIONS

Issued for Re-Zoning
 Issued for Site Plan Agreement
 Issued for Permit
 Issued for Tender
 Issued for Construction

DRAWN BY:	JC	DWG. No.
CHECKED BY:	MAJR	A14
DATE:	NOV 30 2022	
SCALE:	AS SHOWN	
PROJECT No.:	2022-187	