

1 EAST ELEVATION
A-2.1 SCALE: 1:400

- Copyright of this drawing is reserved by the Architect. The drawing and all associated documents are an instrument of service by the Architect. The drawing and the information contained therein may not be reproduced in whole or in part without prior written permission of the Architect.
- These Contract Documents are the property of the Architect. The Architect bears no responsibility for the interpretation of these documents by the Contractor. Upon written application, the Architect will provide written/ graphic clarification or supplementary information regarding the intent of the Contract Documents. The Architect will review Shop Drawings submitted by the Contractor for design conformance only.
- Drawings are not to be scaled for construction. The Contractor is to verify all existing conditions and dimensions required to perform the work and report any discrepancies with the Contract Documents to the Architect before commencing any work.
- Positions of exposed finished mechanical or electrical devices, fittings, and fixtures are indicated on architectural drawings. The locations shown on the architectural drawings govern over the Mechanical and Electrical drawings. Those items not clearly located will be located as directed by the Architect.
- These drawings are not to be used for construction unless noted below as "Issuance: For Construction"
- All work is to be carried out in conformance with the Code and Bylaws of the authorities having jurisdiction.
- The Architect of these plans and specifications gives no warranty or representation to any party about the constructability of the building(s) represented by them. All contractors or subcontractors must satisfy themselves when bidding and at all times ensure that they can properly construct the work represented by these plans.
- Geodetic Elevations provided in these drawings are measured in accordance with the Canadian Geodetic Vertical Datum (CGVD2013).

© 2022 architects—Alliance

No	Issued For	Date
1.	DRAFT SET	2023 - 03 - 14
2.	FOR ZBLA SUBMISSION (FINAL)	2024 - 02 - 01

a—A architects—Alliance
 317 Adelaide Street West, 2nd Flr
 Toronto, ON, M5V 1P9, Canada
 www.architectsalliance.com
 +1. 416. 593. 6500

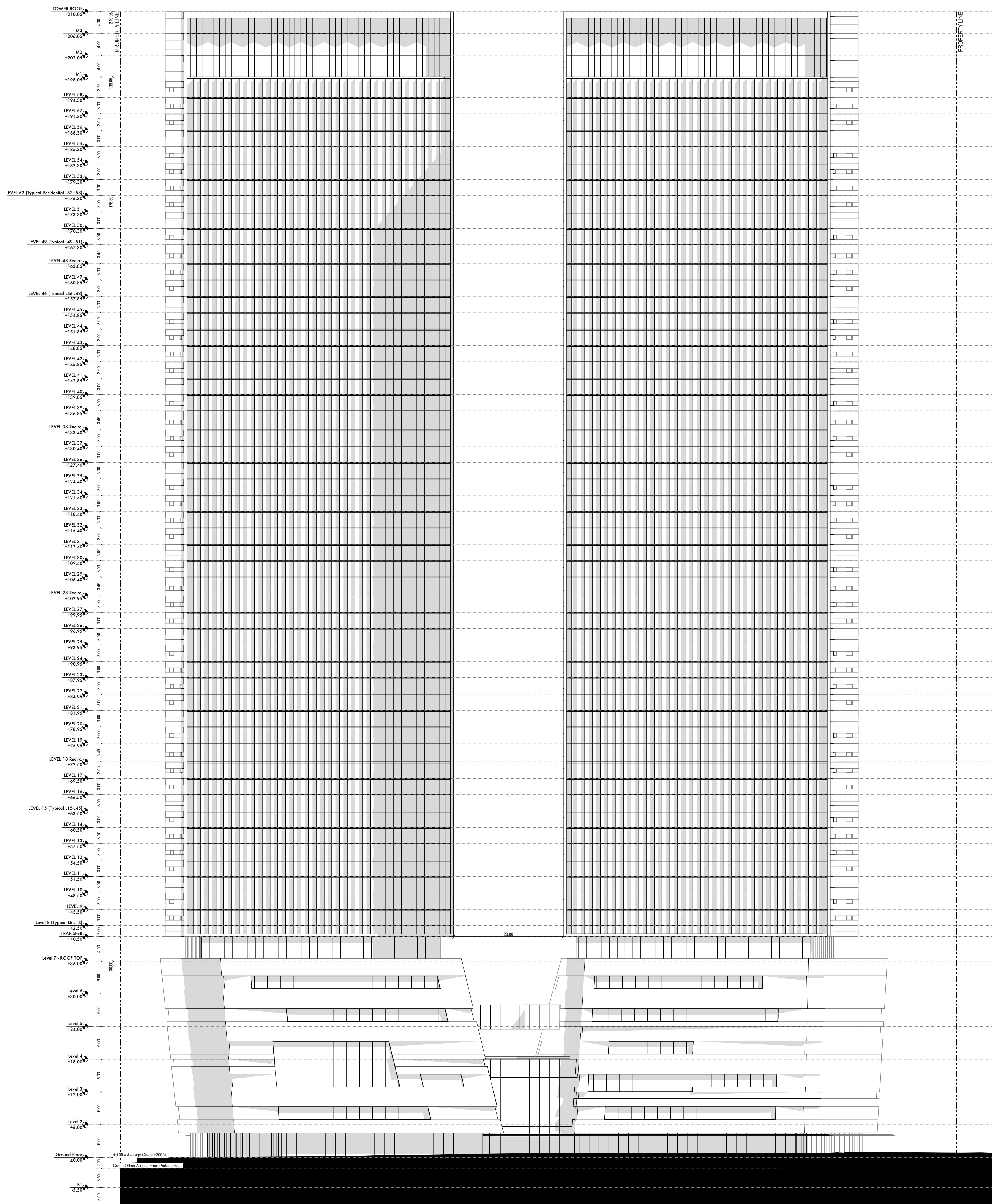


Oakes Hotel Redevelopment
6546 Fallsview Blvd.
 6546 Fallsview Blvd, Niagara Falls, ON

Hennepin's View Inc.

EAST ELEVATION

Scale: 1:400
 Project No: 22023-1
 01 February 2024



- Copyright of this drawing is reserved by the Architect. The drawing and all associated documents are an instrument of service by the Architect. The drawing and the information contained therein may not be reproduced in whole or in part without prior written permission of the Architect.
- These Contract Documents are the property of the Architect. The Architect bears no responsibility for the interpretation of these documents by the Contractor. Upon written application, the Architect will provide written/graphic clarification or supplementary information regarding the intent of the Contract Documents. The Architect will review Shop Drawings submitted by the Contractor for design conformance only.
- Drawings are not to be scaled for construction. The Contractor is to verify all existing conditions and dimensions required to perform the work and report any discrepancies with the Contract Documents to the Architect before commencing any work.
- Positions of exposed finished mechanical or electrical devices, fittings, and fixtures are indicated on architectural drawings. The locations shown on the architectural drawings govern over the Mechanical and Electrical drawings. Those items not clearly located will be located as directed by the Architect.
- These drawings are not to be used for construction unless noted below as "Issuance: For Construction"
- All work is to be carried out in conformance with the Code and Bylaws of the authorities having jurisdiction.
- The Architect of these plans and specifications gives no warranty or representation to any party about the constructability of the building(s) represented by them. All contractors or subcontractors must satisfy themselves when bidding and at all times ensure that they can properly construct the work represented by these plans.
- Geodetic Elevations provided in these drawings are measured in accordance with the Canadian Geodetic Vertical Datum (CGVD2013).

© 2022 architects—Alliance

No	Issued For	Date
1.	DRAFT SET	2023 - 03 - 14
2.	FOR ZBLA SUBMISSION (FINAL)	2024 - 02 - 01

a—A architects—Alliance
 317 Adelaide Street West, 2nd Flr
 Toronto, ON, M5V 1P9, Canada
 www.architectsalliance.com
 +1. 416. 593. 6500



Oakes Hotel Redevelopment
6546 Fallsview Blvd.
 6546 Fallsview Blvd, Niagara Falls, ON

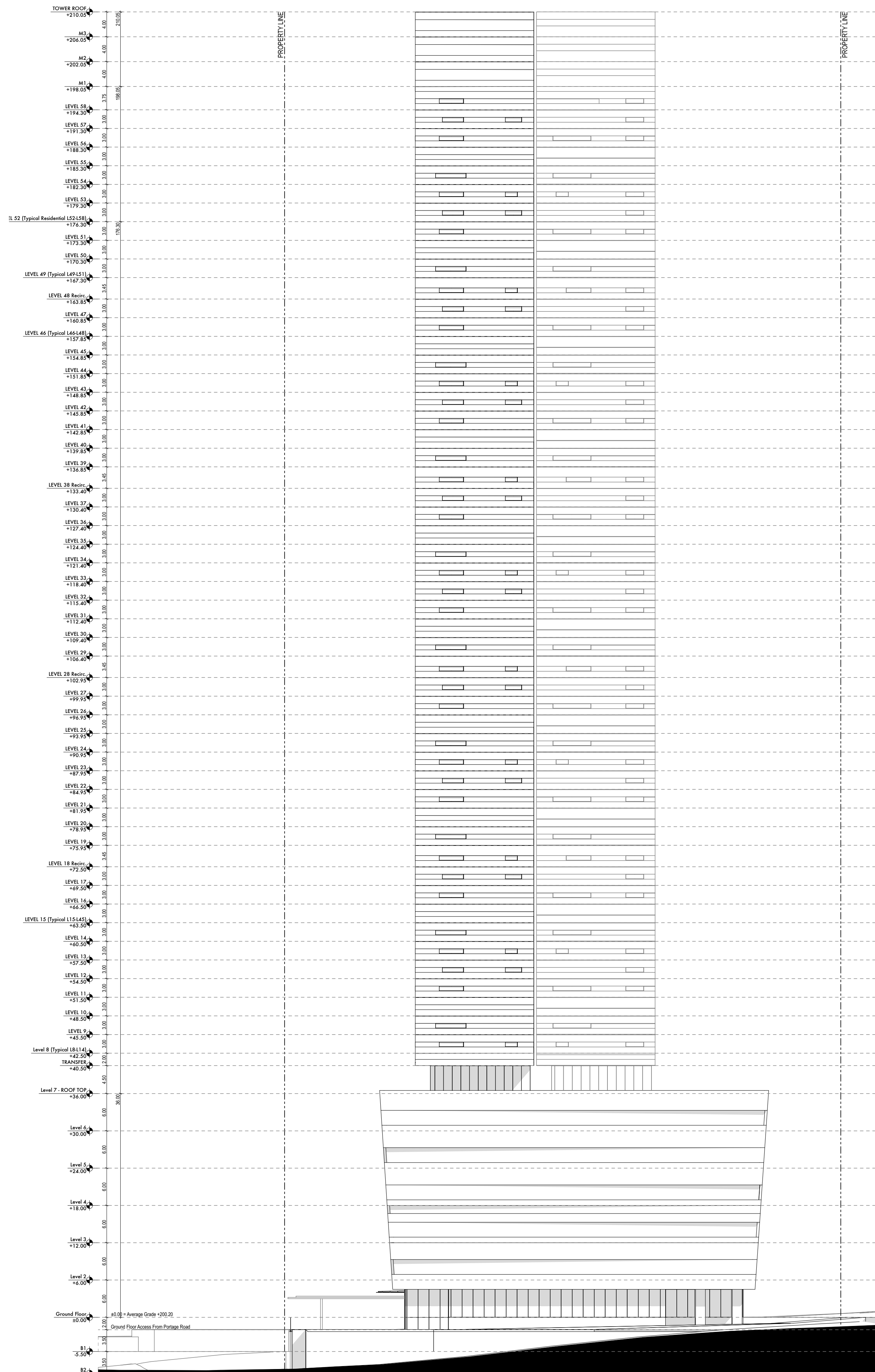
Hennepin's View Inc.

WEST ELEVATION

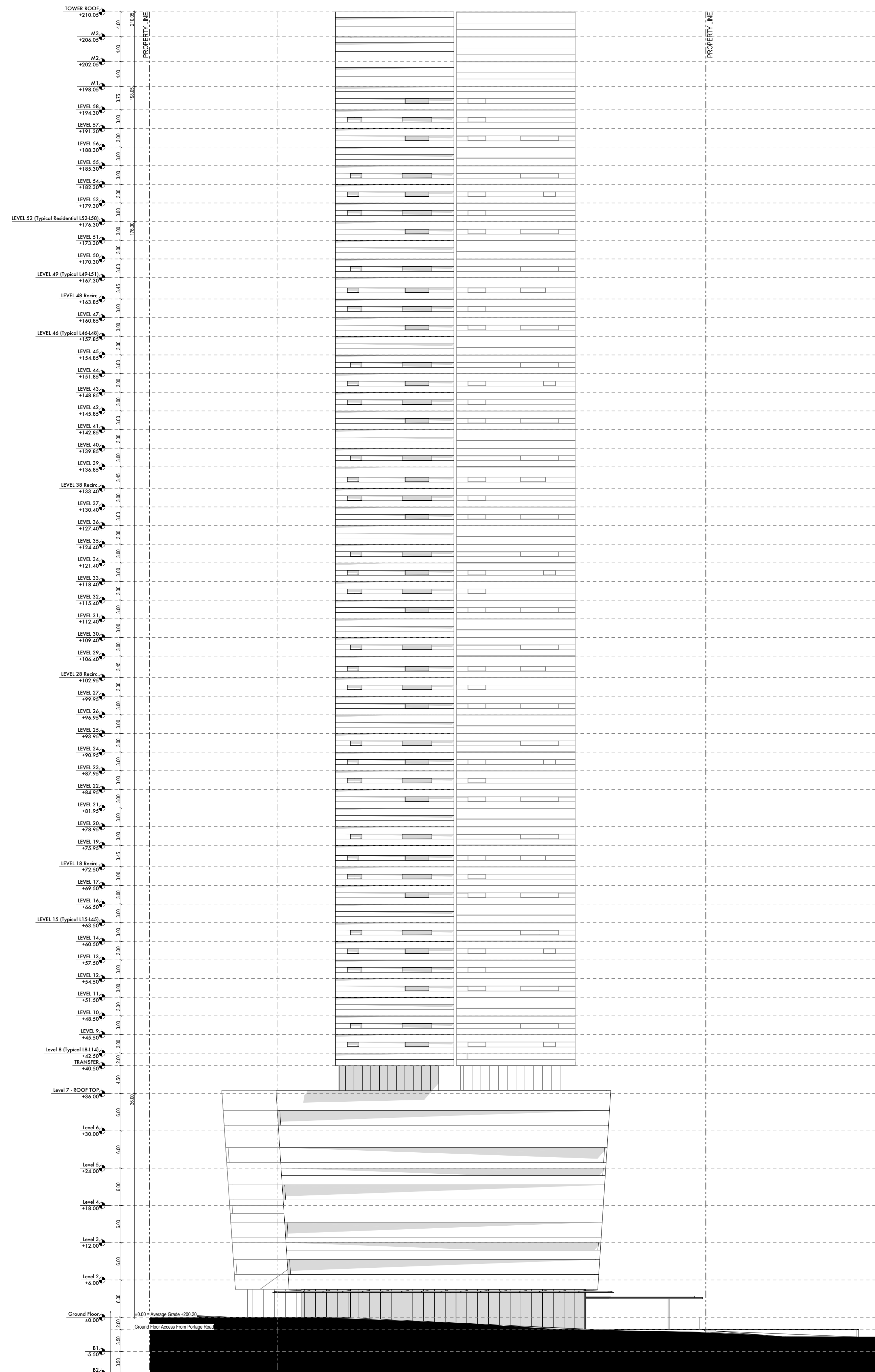
Scale: 1:400
 Project No: 22023-1
 01 February 2024

A-2.2

1
 A-2.2 WEST ELEVATION
 SCALE: 1:400



1 NORTH ELEVATION
SCALE: 1:400



2 SOUTH ELEVATION
SCALE: 1:400

- Copyright of this drawing is reserved by the Architect. The drawing and all associated documents are an instrument of service by the Architect. The drawing and the information contained therein may not be reproduced in whole or in part without prior written permission of the Architect.
- These Contract Documents are the property of the Architect. The Architect bears no responsibility for the interpretation of these documents by the Contractor. Upon written application, the Architect will provide written/ graphic clarification or supplementary information regarding the intent of the Contract Documents. The Architect will review Shop Drawings submitted by the Contractor for design conformance only.
- Drawings are not to be scaled for construction. The Contractor is to verify all existing conditions and dimensions required to perform the work and report any discrepancies with the Contract Documents to the Architect before commencing any work.
- Positions of exposed finished mechanical or electrical devices, fittings, and fixtures are indicated on architectural drawings. The locations shown on the architectural drawings govern over the Mechanical and Electrical drawings. Those items not clearly located will be located as directed by the Architect.
- These drawings are not to be used for construction unless noted below as "Issued For Construction".
- All work is to be carried out in conformance with the Code and Bylaws of the authorities having jurisdiction.
- The Architect of these plans and specifications gives no warranty or representation to any party about the constructability of the building(s) represented by them. All contractors or subcontractors must satisfy themselves when bidding and at all times ensure that they can properly construct the work represented by these plans.
- Geodetic Elevations provided in these drawings are measured in accordance with the Canadian Geodetic Vertical Datum (CGVD2013).

© 2022 architects—Alliance

No	Issued For	Date
1.	DRAFT SET	2023-03-14
2.	FOR ZBLA SUBMISSION (FINAL)	2024-02-01

a—A architects—Alliance
 317 Adelaide Street West, 2nd Flr
 Toronto, ON, M5V 1P9, Canada
 www.architectsalliance.com
 +1.416.595.6500

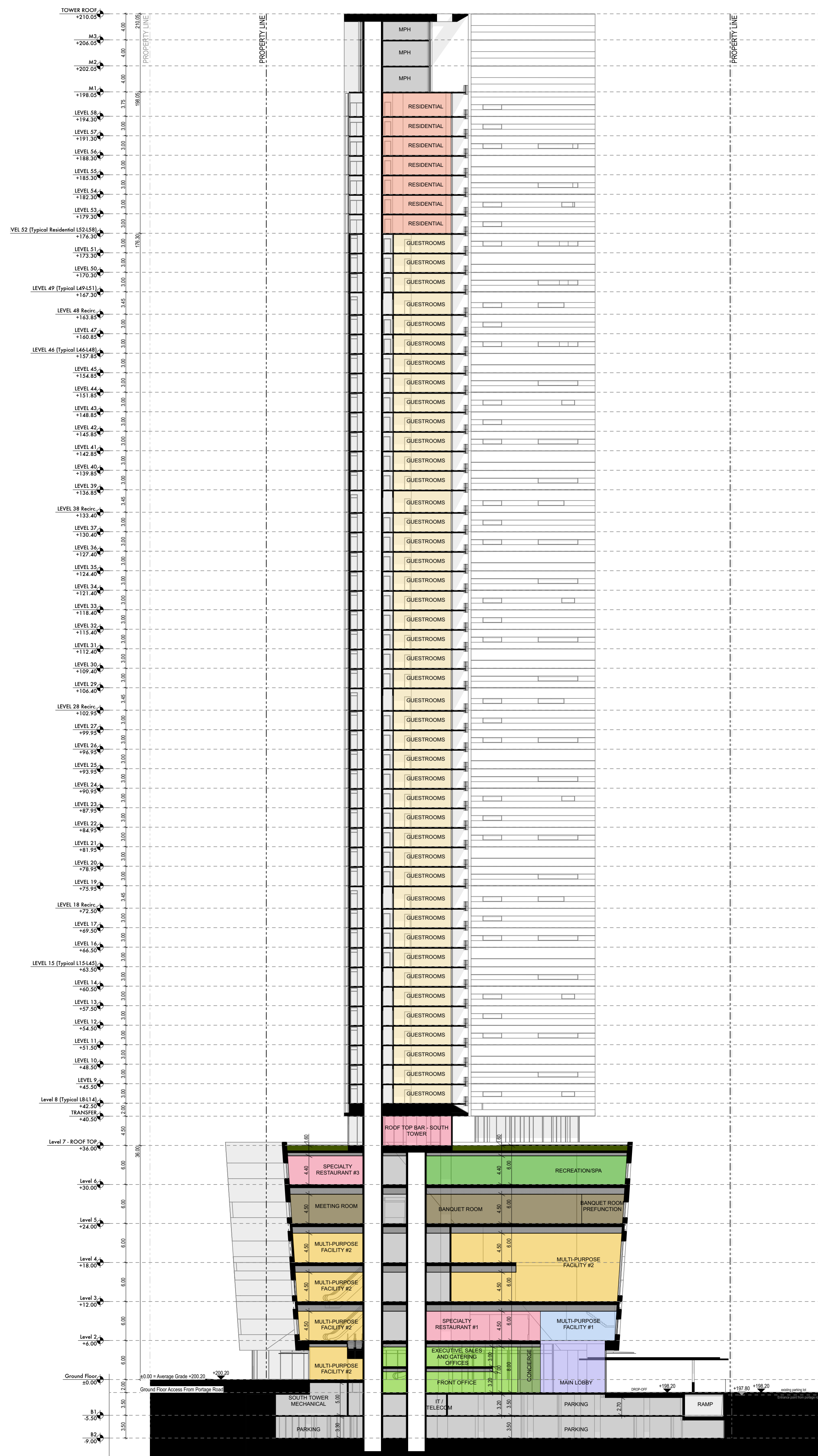


Oakes Hotel Redevelopment
 6546 Fallsview Blvd.
 6546 Fallsview Blvd, Niagara Falls, ON

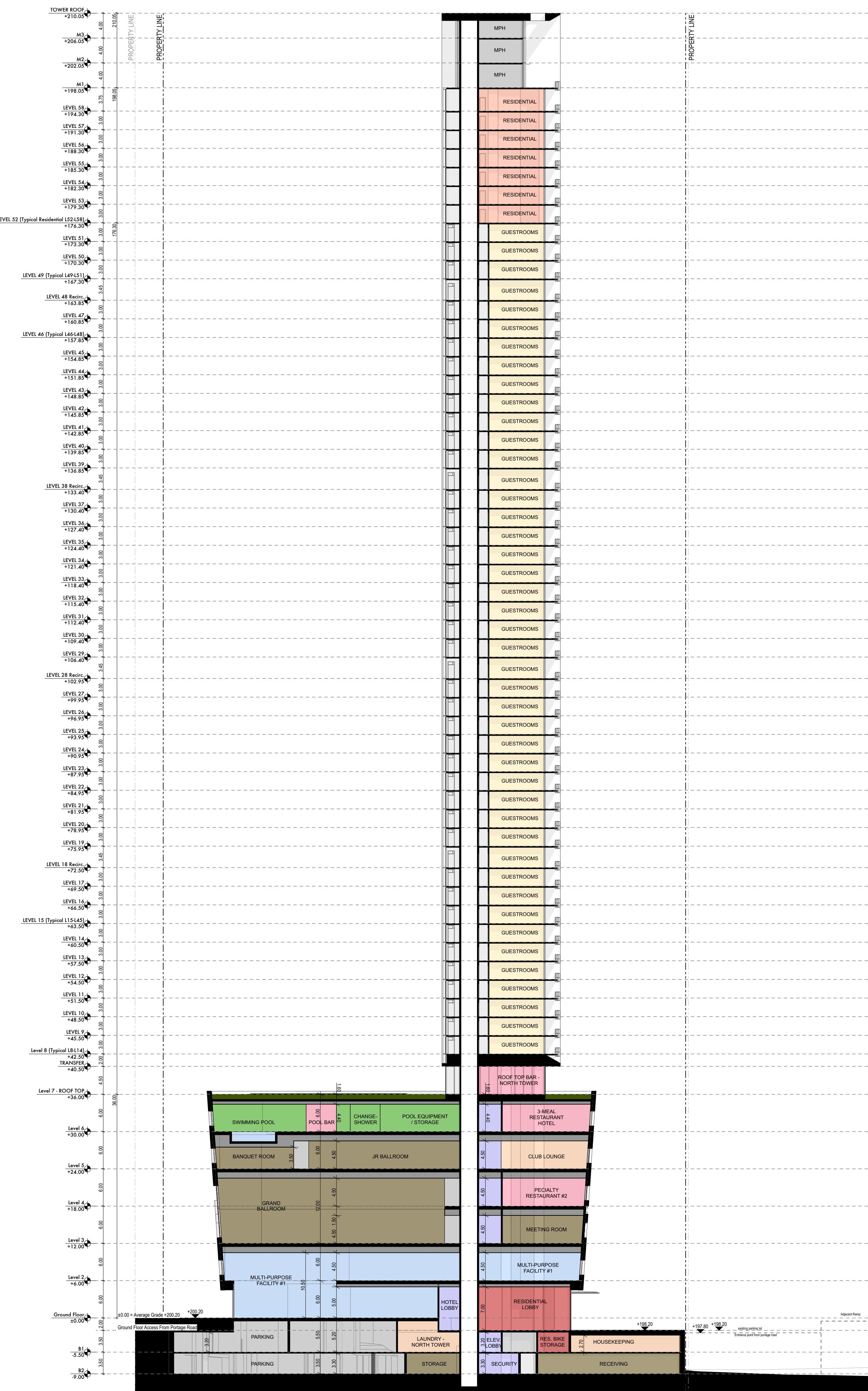
Hennepin's View Inc.

NORTH & SOUTH ELEVATION

Scale: 1:400
 Project No: 22023-1
 01 February 2024



1 SOUTH PODIUM LOOKING NORTH
SCALE: 1:400



2 NORTH PODIUM LOOKING NORTH
SCALE: 1:400

- Copyright of this drawing is reserved by the Architect. The drawing and all associated documents are an instrument of service by the Architect. The drawing and the information contained therein may not be reproduced in whole or in part without prior written permission of the Architect.
- These Contract Documents are the property of the Architect. The Architect bears no responsibility for the interpretation of these documents by the Contractor. Upon written application, the Architect will provide written/ graphic clarification or supplementary information regarding the intent of the Contract Documents. The Architect will review Shop Drawings submitted by the Contractor for design conformance only.
- Drawings are not to be scaled for construction. The Contractor is to verify all existing conditions and dimensions required to perform the work and report any discrepancies with the Contract Documents to the Architect before commencing any work.
- Positions of exposed finished mechanical or electrical devices, fittings, and fixtures are indicated on architectural drawings. The locations shown on the architectural drawings govern over the Mechanical and Electrical drawings. Those items not clearly located will be located as directed by the Architect.
- These drawings are not to be used for construction unless noted below as "Issuance: For Construction"
- All work is to be carried out in conformance with the Code and Bylaws of the authorities having jurisdiction.
- The Architect of these plans and specifications gives no warranty or representation to any party about the constructability of the building(s) represented by them. All contractors or subcontractors must satisfy themselves when bidding and at all times ensure that they can properly construct the work represented by these plans.
- Geodetic Elevations provided in these drawings are measured in accordance with the Canadian Geodetic Vertical Datum (CGVD2013).

© 2022 architects—Alliance

No	Issued For	Date
1.	DRAFT SET	2023-03-14
2.	FOR ZBLA SUBMISSION (FINAL)	2024-02-01

a—A architects—Alliance
317 Adelaide Street West, 2nd Flr
Toronto, ON, M5V 1P9, Canada
www.architectsalliance.com
+1.416.595.6500



Oakes Hotel Redevelopment
6546 Fallsview Blvd.
Niagara Falls, ON

Hennepin's View Inc.

SECTIONS

Scale: 1:400

Project No: 22023-1

01 February 2024