

INTEGRATION DATA		
OBSERVED REFERENCE POINTS (ORPs): UTM ZONE 17, NAD83 (CSRS) (2010.0).		
COORDINATES TO URBAN ACCURACY PER SECTION 14 (2) OF O.REG 216/10.		
POINT ID	EASTING	NORTHING
ORP (A)	*	*
ORP (B)	*	*
COORDINATES CANNOT, IN THEMSELVES, BE USED TO RE-ESTABLISH CORNERS OR BOUNDARIES SHOWN ON THIS PLAN.		

THE RESULTANT TIE BETWEEN ORP (A) AND ORP (B) IS * (GROUND), N*

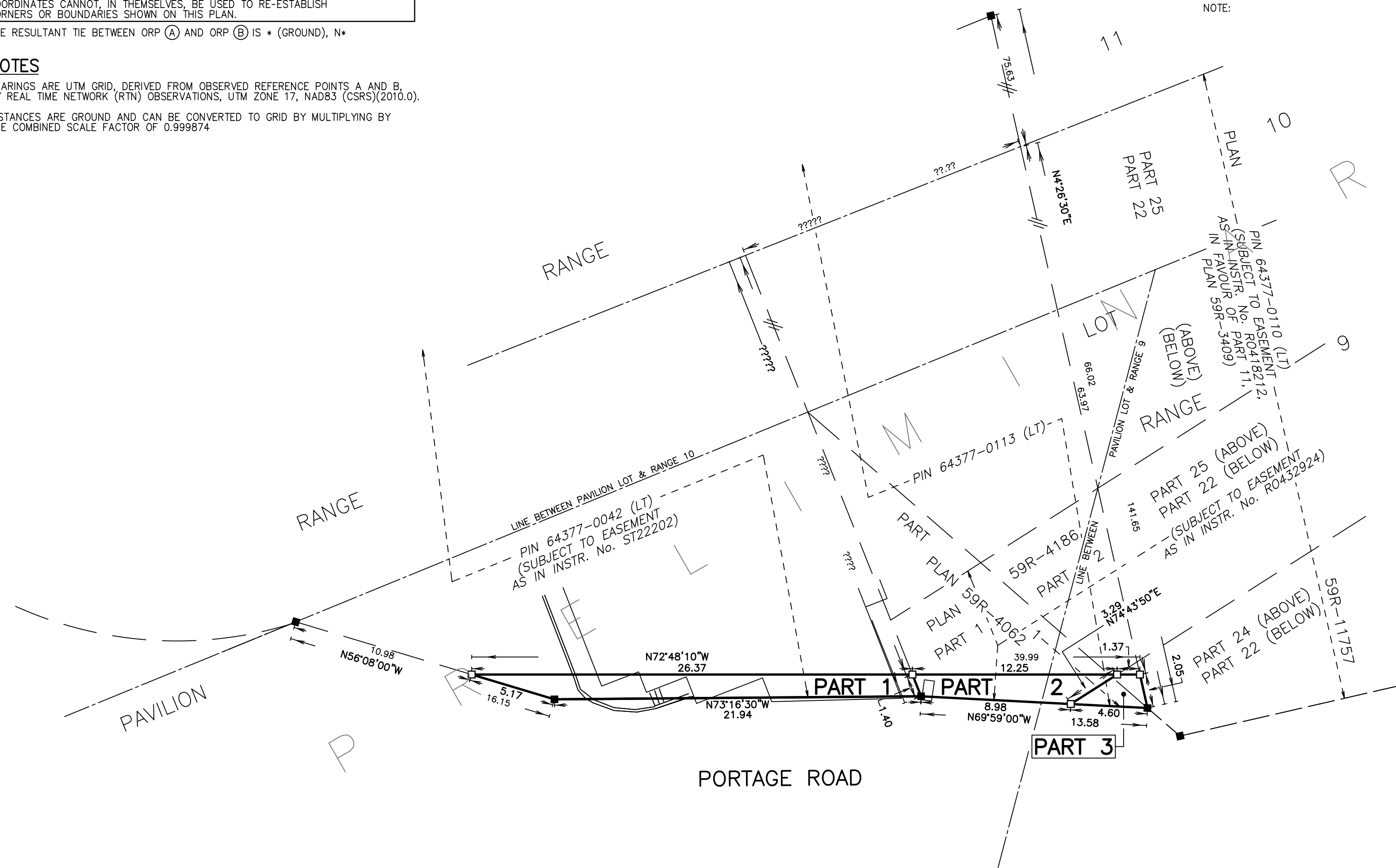
NOTES

BEARINGS ARE UTM GRID, DERIVED FROM OBSERVED REFERENCE POINTS A AND B, BY REAL TIME NETWORK (RTN) OBSERVATIONS, UTM ZONE 17, NAD83 (CSRS)(2010.0).

DISTANCES ARE GROUND AND CAN BE CONVERTED TO GRID BY MULTIPLYING BY THE COMBINED SCALE FACTOR OF 0.999874

SCHEDULE				
PART	LOT	PLAN	PIN	AREA
1	PART OF PAVILION	1	PART OF 64377-0042 (LT)	sq.m
2	PART OF PAVILION & PART OF RANGE 9		PART OF 64377-0113 (LT)	sq.m
3	PART OF RANGE 9			sq.m

NOTE:



PLAN OF SURVEY OF
PART OF PAVILION LOT
 AND
PART OF RANGE 9
REGISTERED PLAN 1
 CITY OF NIAGARA FALLS
 REGIONAL MUNICIPALITY OF NIAGARA
 SCALE 1 : 200



THE INTENDED PLOT SIZE OF THIS PLAN IS XXmm IN WIDTH BY XXmm IN HEIGHT WHEN PLOTTED AT A SCALE OF 1:XXX

J. D. BARNES LIMITED

METRIC DISTANCES AND/OR COORDINATES SHOWN ON THIS PLAN ARE IN METRES AND CAN BE CONVERTED TO FEET BY DIVIDING BY 0.3048.

SURVEYOR'S CERTIFICATE

- I CERTIFY THAT:
1. THIS SURVEY AND PLAN ARE CORRECT AND IN ACCORDANCE WITH THE SURVEYS ACT, THE SURVEYORS ACT AND THE LAND TITLES ACT AND THE REGULATIONS MADE UNDER THEM.
 2. THE SURVEY WAS COMPLETED ON

PRELIMINARY DATE _____ PRELIMINARY DATE _____
 DASHA PAGE
 ONTARIO LAND SURVEYOR

THIS PLAN OF SURVEY RELATES TO AOLS PLAN SUBMISSION FORM NUMBER _____



J.D. BARNES LIMITED
 LAND INFORMATION SPECIALISTS
 4318 PORTAGE ROAD - UNIT 2, NIAGARA FALLS, ON L2E 6A4
 T: (905) 358-3693 F: (905) 358-6224 www.jdbarnes.com

DRAWN BY: BC	CHECKED BY: *	REFERENCE NO.: 23-16-373-01
-----------------	------------------	--------------------------------