

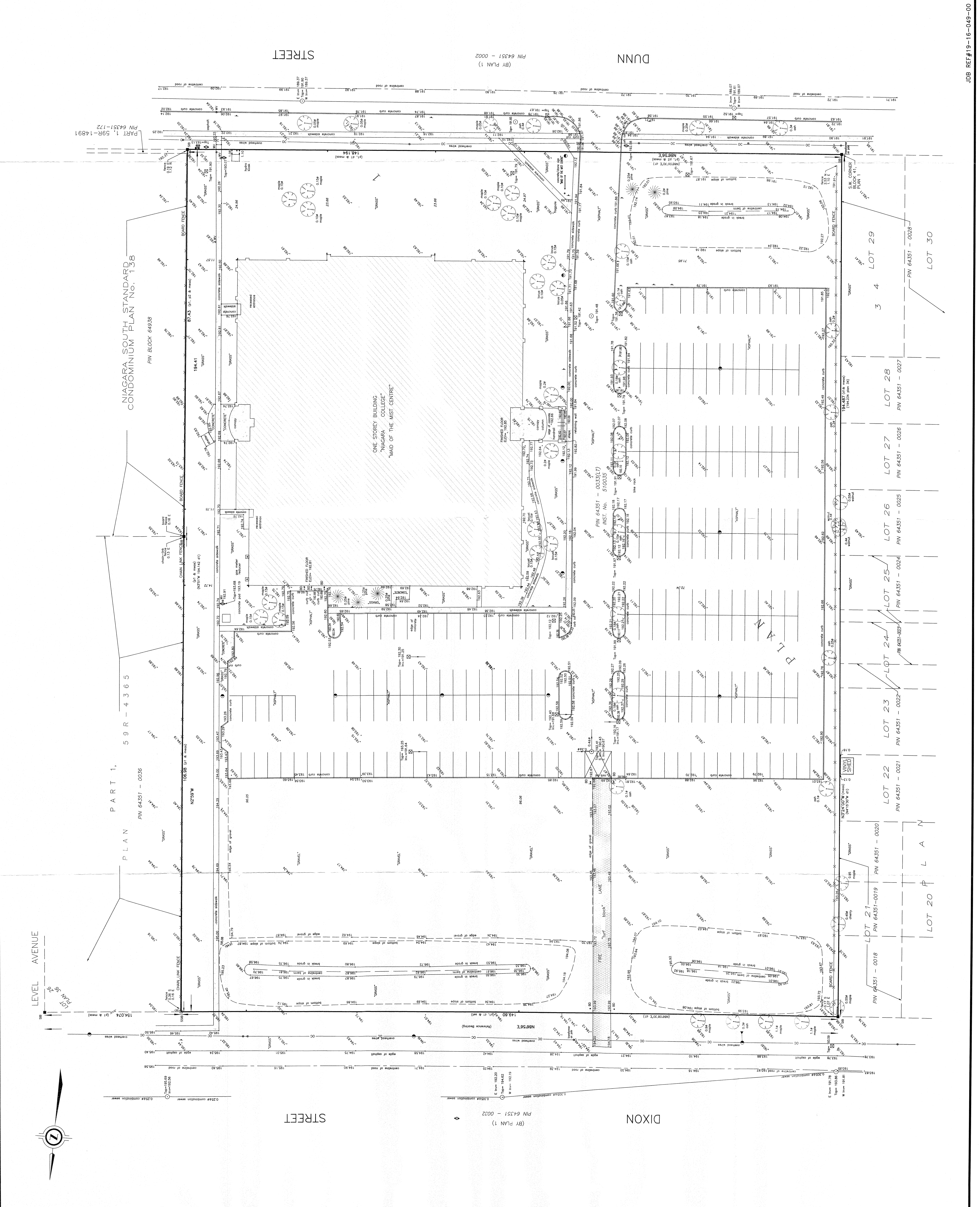
SURVEYOR'S CERTIFICATE
 I CERTIFY THAT THE FIELD WORK REPRESENTED ON THIS SKETCH WAS COMPLETED
 MARCH 4, 2019
 MARCH 6, 2019
 Date
 ALAN T. HEYWOOD
 Ontario Land Surveyor

Matthews, Cameron, Heywood - Kerry T. Howe
Surveying Limited
 533 Stuyvesant Ave. Niagara Falls, Ontario L2E 3Z3 Phone: 905-386-1885 Fax: 905-386-4024
 95 Church Street, St. Catharines, Ontario L2R 3K8 Phone: 905-300-1800 Fax: 905-300-1801

NOTES
MONUMENTATION NOTE
 ALL FOUND MONUMENTATION SHOWN ON THIS PLAN WAS PLANTED BY MATTHEWS, CAMERON, HEYWOOD - KERRY T. HOWE SURVEYING LIMITED OR A SUBCONTRACTOR THEREOF.
ELEVATION NOTE
 ELEVATIONS ARE OF GEODETIC ORIGIN AND ARE DERIVED FROM THE GEODETIC BENCHMARK NO. 801083570B, HAVING AN ELEVATION OF 174.51 METRES (OBS. 19 10).
BEARING NOTE
 BEARINGS ARE IN DEGREES AND ARE REFERRED TO THE SOUTHERLY LIMIT OF DIXON STREET, AS SHOWN ON PLAN 598-4365, HAVING A BEARING OF S 89° 51' 00" E.
METRIC NOTE
 DIMENSIONS/ELEVATIONS SHOWN ON THIS PLAN ARE IN METRES AND CAN BE CONVERTED TO FEET BY DIVIDING BY 0.3048

LEGEND
 ○ denotes Light Standard
 ○ Catch Basin
 ○ Manhole
 ○ Spot Elevation (location)
 ○ Traffic Sign
 ○ Utility Pole
 ○ Bell Pedestal
 ○ Cable Pedestal
 ○ Hydrant
 ○ Shrub
 ○ Coniferous Tree
 ○ Deciduous Tree
 ○ Building
 ○ Water Valve
 ○ Gas Valve
 ○ Board
 ○ Guy Wire Anchor
 ○ Bench
 ○ Borehole
 ○ Gas Meter
 ○ Ground Light
 ○ Hosebib
 ○ Junction Box
 ○ Electrical Outlet
 ○ Railway Signal
 ○ Railway Switch
 ○ Sprinkler
 ○ Tree Stump
 ○ Parking Meter
 ○ Cleanout
 ○ Found Survey Monument
 ○ Standard Iron Bar
 ○ Iron Bar
 ○ Nail & Washer
 ○ Rock Post
 ○ Concrete Pin & Washer
 ○ Ministry of Transportation of Ontario
 ○ Witness
 ○ Mark of 744
 ○ PLAN 598-4365
 ○ PIN 598-4365
 ○ INST No. 510035

CAUTION
 PRIOR TO CONSTRUCTION CONTRACTOR SHALL VERIFY & CONFIRM LOCATION OF APPURTENANT FEATURES.



SURVEYOR'S CERTIFICATE
 I CERTIFY THAT THE FIELD WORK REPRESENTED ON THIS SKETCH WAS COMPLETED
 MARCH 4, 2019
 MARCH 6, 2019
 Date
 ALAN T. HEYWOOD
 Ontario Land Surveyor

NOTES
MONUMENTATION NOTE
 ALL FOUND MONUMENTATION SHOWN ON THIS PLAN WAS PLANTED BY MATTHEWS, CAMERON, HEYWOOD - KERRY T. HOWE SURVEYING LIMITED OR A SUBCONTRACTOR THEREOF.
ELEVATION NOTE
 ELEVATIONS ARE OF GEODETIC ORIGIN AND ARE DERIVED FROM THE GEODETIC BENCHMARK NO. 801083570B, HAVING AN ELEVATION OF 174.51 METRES (OBS. 19 10).
BEARING NOTE
 BEARINGS ARE IN DEGREES AND ARE REFERRED TO THE SOUTHERLY LIMIT OF DIXON STREET, AS SHOWN ON PLAN 598-4365, HAVING A BEARING OF S 89° 51' 00" E.
METRIC NOTE
 DIMENSIONS/ELEVATIONS SHOWN ON THIS PLAN ARE IN METRES AND CAN BE CONVERTED TO FEET BY DIVIDING BY 0.3048

LEGEND
 ○ denotes Light Standard
 ○ Catch Basin
 ○ Manhole
 ○ Spot Elevation (location)
 ○ Traffic Sign
 ○ Utility Pole
 ○ Bell Pedestal
 ○ Cable Pedestal
 ○ Hydrant
 ○ Shrub
 ○ Coniferous Tree
 ○ Deciduous Tree
 ○ Building
 ○ Water Valve
 ○ Gas Valve
 ○ Board
 ○ Guy Wire Anchor
 ○ Bench
 ○ Borehole
 ○ Gas Meter
 ○ Ground Light
 ○ Hosebib
 ○ Junction Box
 ○ Electrical Outlet
 ○ Railway Signal
 ○ Railway Switch
 ○ Sprinkler
 ○ Tree Stump
 ○ Parking Meter
 ○ Cleanout
 ○ Found Survey Monument
 ○ Standard Iron Bar
 ○ Iron Bar
 ○ Nail & Washer
 ○ Rock Post
 ○ Concrete Pin & Washer
 ○ Ministry of Transportation of Ontario
 ○ Witness
 ○ Mark of 744
 ○ PLAN 598-4365
 ○ PIN 598-4365
 ○ INST No. 510035

CAUTION
 PRIOR TO CONSTRUCTION CONTRACTOR SHALL VERIFY & CONFIRM LOCATION OF APPURTENANT FEATURES.