

Do not scale drawings. Report any discrepancies to Hallex Engineering Ltd. before proceeding.

This drawing must be signed and sealed by the Engineer prior to use in construction or submission for building permit.

All construction shall be in accordance with latest edition of the Ontario Building Code and all applicable Ontario regulations.

No part of this drawing including details, calculations or schedules may be reproduced in any form, either in part or whole, without the prior written consent of Hallex Engineering Ltd.

HALLEX ENGINEERING LTD.

745 South Service Rd. Unit 205,
Stoney Creek, ON L8E 5Z2
Tel: 905-861-4016

4999 Victoria Ave.,
Niagara Falls, ON L2E 4C9
Tel: 905-387-4015 Fax: 905-383-1105

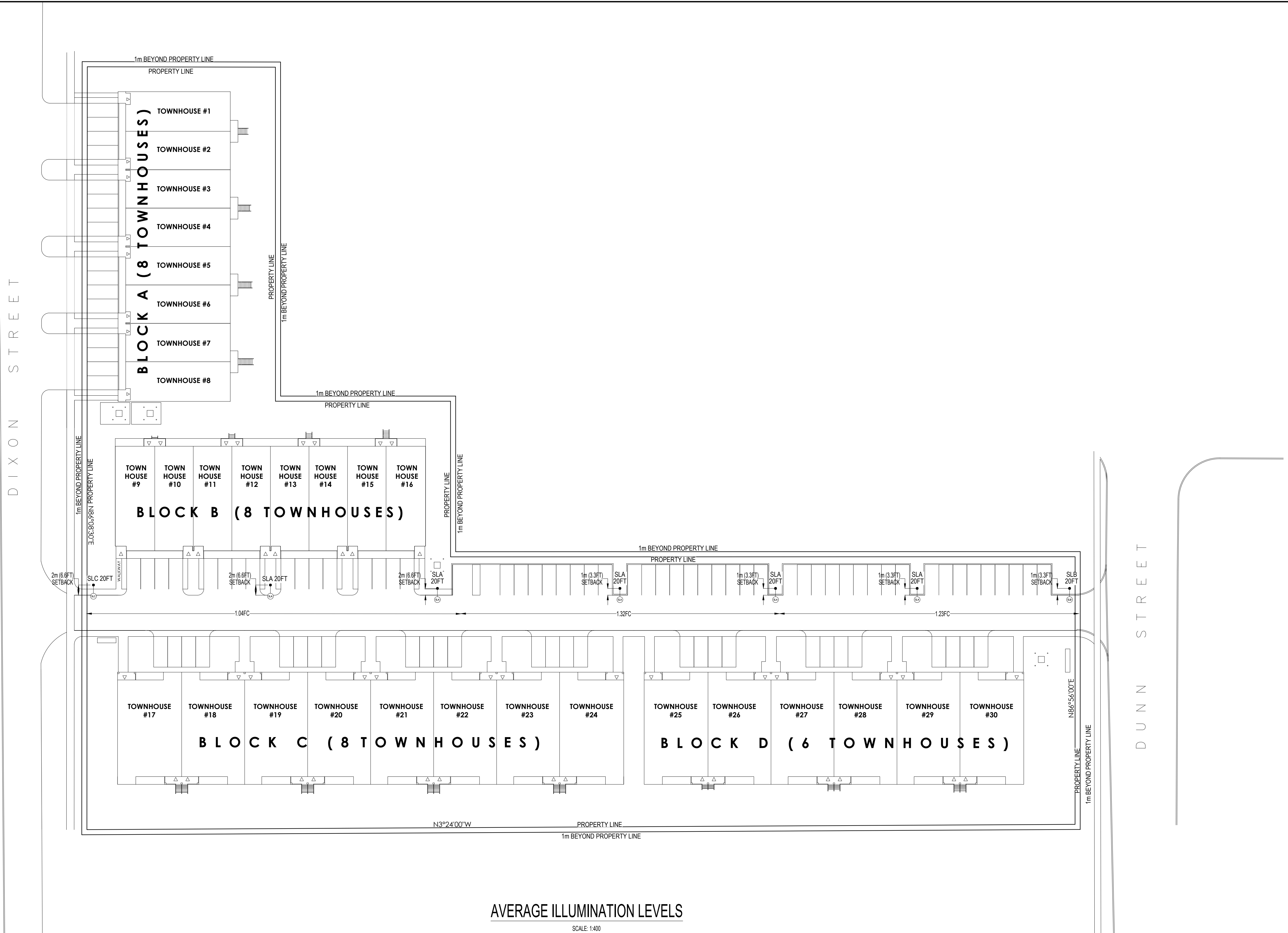
REV.	ISSUED FOR:	YYYYMMDD
0	SITE PLAN APPROVAL	2021/08/20
1	SITE PLAN APPROVAL	2022/03/16
2	SITE PLAN APPROVAL	2022/05/31
3	SITE PLAN APPROVAL	2023/05/20
4	SITE PLAN APPROVAL	2024/02/20

CLIENT:
1984351 ONTARIO LIMITED
5881 DUNN STREET
NIAGARA FALLS, ON.
L2G 2N9

PROJECT:
5881 DUNN STREET - PART 1
PHOTOMETRIC LIGHTING DESIGN
NIAGARA FALLS, ON.
L2G 2N9

SHEET TITLE:
AVERAGE ILLUMINATION LEVELS

JOB NUMBER:	210717B
DATE:	AUG. 05, 2021
DRAWN BY:	MW
DESIGNED BY:	MW
CHECKED BY:	JD
SCALE:	AS SHOWN
DWG. REV.	
SL1B	4



AVERAGE ILLUMINATION LEVELS
SCALE: 1:400

LIGHT SCHEDULE

ITEM	SYMBOL	LAMP TYPE	WATTS	DESCRIPTION
SLA		LED	56	ECOFORM BY SIGNIFY SMALL AREA LIGHT, 4000K, ECF-S-32L-530-NW-G2-2-HIS, C/W 4" SQUARE DYNAPOLE SSS4-XX, (XX) = SPECIFIED POLE HEIGHT ON DRAWINGS.
SLB		LED	43	ECOFORM BY SIGNIFY SMALL AREA LIGHT, 4000K, ECF-S-32L-400-NW-G2-LCL, C/W 4" SQUARE DYNAPOLE SSS4-XX, (XX) = SPECIFIED POLE HEIGHT ON DRAWINGS.
SLC		LED	43	ECOFORM BY SIGNIFY SMALL AREA LIGHT, 4000K, ECF-S-32L-5400-NW-G2-LCR, C/W 4" SQUARE DYNAPOLE SSS4-XX, (XX) = SPECIFIED POLE HEIGHT ON DRAWINGS.

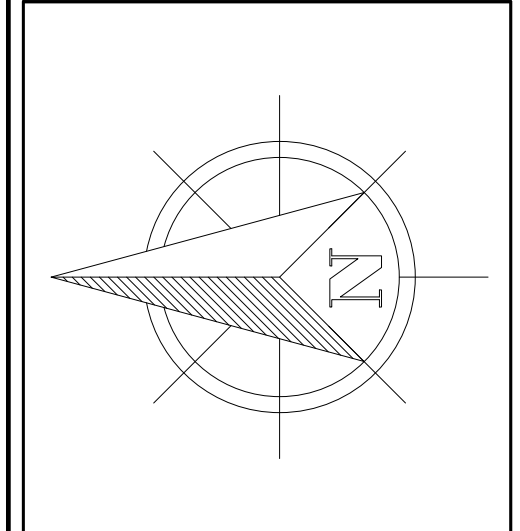
- ALL GRID VALUES SHOWN ARE LIGHT LEVELS AT GROUND LEVEL AND ARE MEASURED IN FOOT-CANDLES.
- ALL LIGHT LEVELS SHOWN ARE THE RESULT OF LIGHTS TO THE WATTAGE & HEIGHTS SHOWN ON THE DRAWINGS.
- PHOTOMETRIC DATA USED AS INPUT FOR THESE CALCULATIONS IS BASED ON ESTABLISHED IES PROCEDURES AND PUBLISHED LAMP RATINGS. FIELD PERFORMANCE WILL DEPEND ON ACTUAL LAMP, BALLAST, ELECTRICAL AND SITE CHARACTERISTICS.
- ALL POLE-BASED FIXTURES TO BE MOUNTED AT THE HEIGHT SHOWN ABOVE FINISHED GRADE AND ARE TO INCLUDE ANY POLEBASE COMBINATIONS.
- ALL FIXTURES ARE TO BE SETBACK 1m FROM THE ROADWAY CURB LINES. WHERE FIXTURES ARE MOUNTED ADJACENT TO PARKING AREAS, POLES ARE TO BE IN LINE WITH PAINTED PARKING LINES WHENEVER POSSIBLE.
- UTILIZE SHIELDS AS REQUIRED TO PREVENT EXCESSIVE LIGHTING TRESPASS ACROSS PROPERTY LINES.
- ALTERNATE SITE LIGHTING FIXTURES WILL NOT BE APPROVED UNLESS ENGINEER SEALED PHOTOMETRICS CAN BE PROVIDED TO MATCH THOSE PROVIDED BY ENGINEER.
- PHOTOMETRIC GRID IS BASED ON 8' x 8' SPACING.
- LIGHT LOSS FACTOR USED: 0.85



FIXTURE IMAGE "SLA-SLC"
SCALE: N.T.S.

DRAWING LIST

SL1	AVERAGE ILLUMINATION LEVELS
SL2	ILLUMINATION LEVELS



Do not scale drawings. Report any discrepancies to Hallex Engineering Ltd. before proceeding.

This drawing must be signed and sealed by the Engineer prior to use in construction or submission for building permit.

All construction shall be in accordance with latest edition of the Ontario Building Code and all applicable Ontario regulations.

No part of this drawing including details, calculations or schedules may be reproduced in any form, either in part or whole, without the prior written consent of Hallex Engineering Ltd.

HALLEX ENGINEERING LTD.

745 South Service Rd. Unit 205,
Stoney Creek, ON L8E 5Z2
Tel: 905-861-4016

4999 Victoria Ave.,
Niagara Falls, ON L2E 4G3
Tel: 905-387-4015 Fax: 905-383-1105

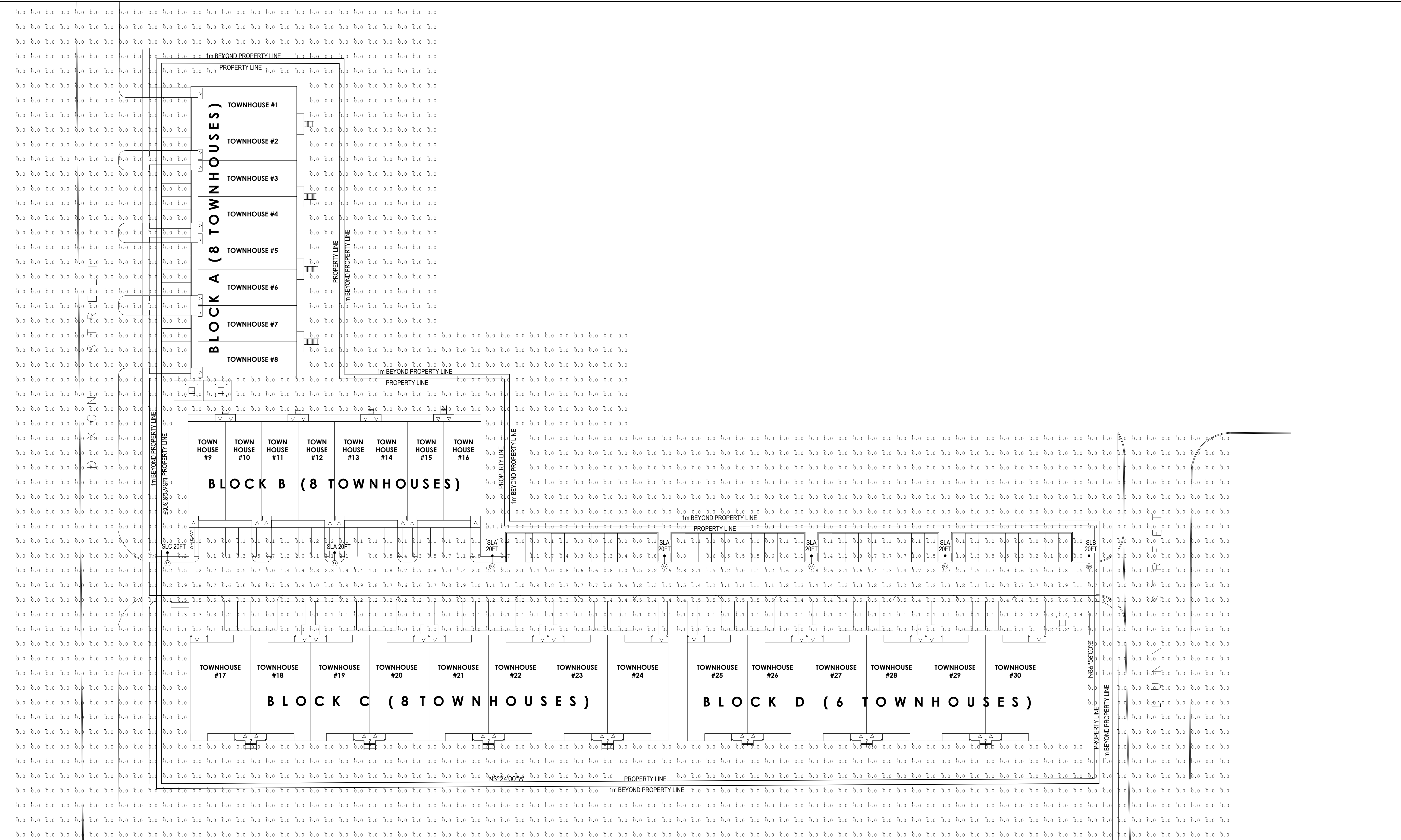
REV.	ISSUED FOR:	YYYYMMDD
0	SITE PLAN APPROVAL	2021/08/20
1	SITE PLAN APPROVAL	2022/03/16
2	SITE PLAN APPROVAL	2022/05/31
3	SITE PLAN APPROVAL	2023/05/20
4	SITE PLAN APPROVAL	2024/02/20

CLIENT:
1984351 ONTARIO LIMITED
5881 DUNN STREET
NIAGARA FALLS, ON.
L2G 2N9

PROJECT:
5881 DUNN STREET - PART 1
PHOTOMETRIC LIGHTING DESIGN
NIAGARA FALLS, ON.
L2G 2N9

SHEET TITLE:
ILLUMINATION LEVELS

JOB NUMBER:	210717B
DATE:	AUG. 05, 2021
DRAWN BY:	MW
DESIGNED BY:	MW
CHECKED BY:	JD
SCALE:	AS SHOWN
DWG. NO.	SL2B
REV.	4



ILLUMINATION LEVELS
SCALE: 1:400

LIGHT SCHEDULE				
ITEM	SYMBOL	LAMP TYPE	WATTS	DESCRIPTION
SLA		LED	56	ECOFORM BY SIGNIFY SMALL AREA LIGHT, 4000K, ECF-S-32L-530-NW-G2-2-HIS, CW 4" SQUARE DYNAPOLE SSS4-XX, (XX) = SPECIFIED POLE HEIGHT ON DRAWINGS.
SLB		LED	43	ECOFORM BY SIGNIFY SMALL AREA LIGHT, 4000K, ECF-S-32L-400-NW-G2-LCL, CW 4" SQUARE DYNAPOLE SSS4-XX, (XX) = SPECIFIED POLE HEIGHT ON DRAWINGS.
SLC		LED	43	ECOFORM BY SIGNIFY SMALL AREA LIGHT, 4000K, ECF-S-32L-5400-NW-G2-LCR, CW 4" SQUARE DYNAPOLE SSS4-XX, (XX) = SPECIFIED POLE HEIGHT ON DRAWINGS.

1. ALL GRID VALUES SHOWN ARE LIGHT LEVELS AT GROUND LEVEL AND ARE MEASURED IN FOOT-CANDLES.
2. ALL LIGHT LEVELS SHOWN ARE THE RESULT OF LIGHTS TO THE WATTAGE & HEIGHTS SHOWN ON THE DRAWINGS.
3. PHOTOMETRIC DATA USED AS INPUT FOR THESE CALCULATIONS IS BASED ON ESTABLISHED IES PROCEDURES AND PUBLISHED LAMP RATINGS. FIELD PERFORMANCE WILL DEPEND ON ACTUAL LAMP, BALLAST, ELECTRICAL AND SITE CHARACTERISTICS.
4. ALL POLE-BASED FIXTURES TO BE MOUNTED AT THE HEIGHT SHOWN ABOVE FINISHED GRADE AND ARE TO INCLUDE ANY POLEBASE COMBINATIONS.
5. ALL FIXTURES ARE TO BE SETBACK 1m FROM THE ROADWAY CURB LINES. WHERE FIXTURES ARE MOUNTED ADJACENT TO PARKING AREAS, POLES ARE TO BE IN LINE WITH PAINTED PARKING LINES WHENEVER POSSIBLE.
6. UTILIZE SHIELDS AS REQUIRED TO PREVENT EXCESSIVE LIGHTING TRESPASS ACROSS PROPERTY LINES.
7. ALTERNATE SITE LIGHTING FIXTURES WILL NOT BE APPROVED UNLESS ENGINEER SEALED PHOTOMETRICS CAN BE PROVIDED TO MATCH THOSE PROVIDED BY ENGINEER.
8. PHOTOMETRIC GRID IS BASED ON 8' x 8' SPACING.
9. LIGHT LOSS FACTOR USED: 0.85



FIXTURE IMAGE "SLA-SLC"
SCALE: N.T.S

DRAWING LIST	
SL1	AVERAGE ILLUMINATION LEVELS
SL2	ILLUMINATION LEVELS