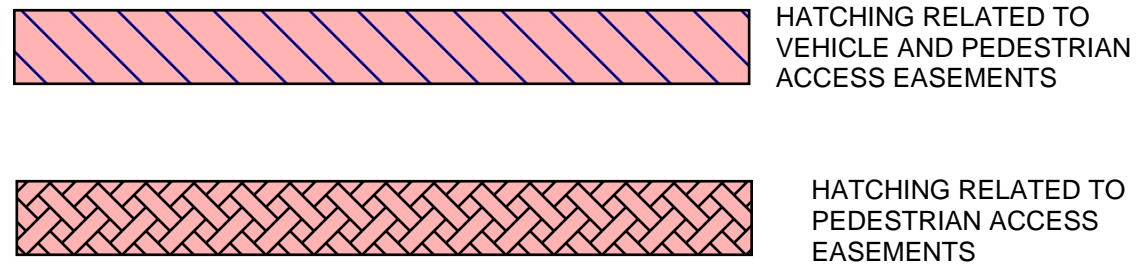
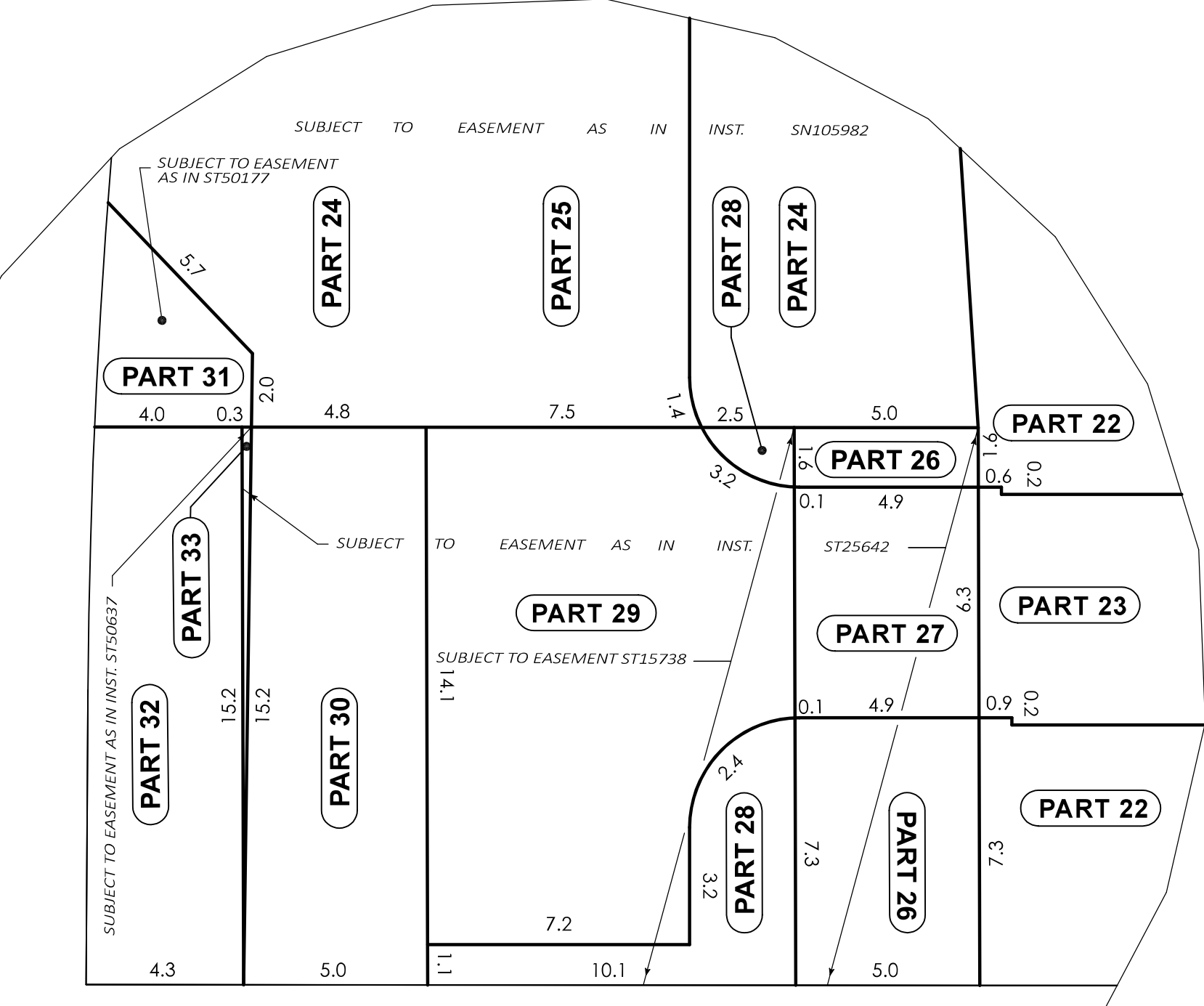
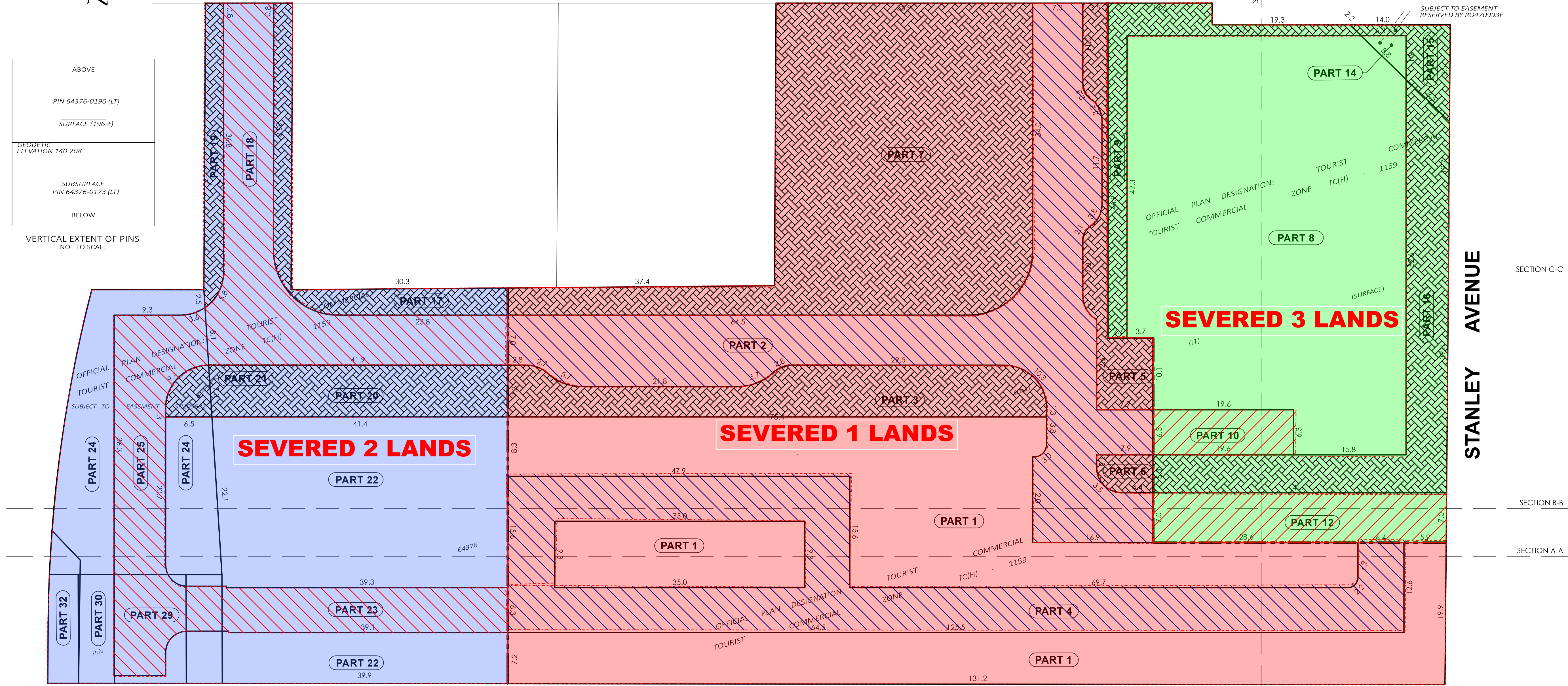
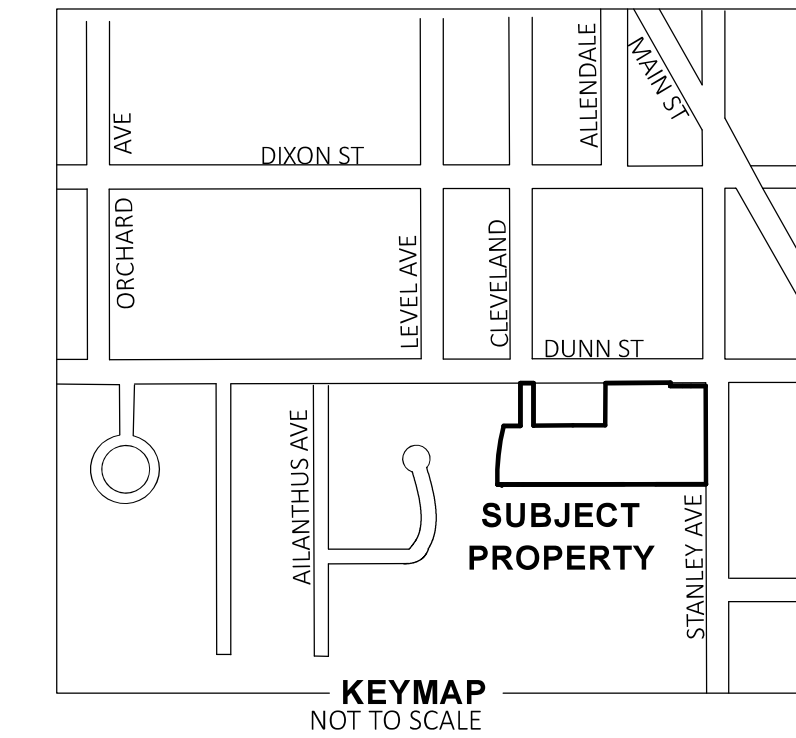


GROUND FLOOR

SEVERANCE SKETCH
 ALL OF LOTS 2-7 (INCLUSIVE), LOT 13, PART OF LOT 1, REGISTERED PLAN 41
 PART OF RANGES 5, 6 & 7, REGISTERED PLAN 1
 (TOWNSHIP OF STAMFORD)
 CITY OF NIAGARA FALLS
 REGIONAL MUNICIPALITY OF NIAGARA

SCALE 1 : 300
 VAN HARTEN SURVEYING INC.



- PROPOSED PHASE 1 LANDS**
 PARTS 1, 2, 3, 4, 5, 6 & 7
SERVIENT EASEMENTS
- PROPOSED EASEMENT FOR INGRESS & EGRESS FOR VEHICLE AND PEDESTRIAN ACCESS OVER PARTS 2 & 4 IN FAVOUR OF PHASE 2 & PHASE 3 LANDS
 - PROPOSED EASEMENT FOR PEDESTRIAN ACCESS OVER PARTS 3, 5, 6 & 7 IN FAVOUR OF PHASE 2 & PHASE 3 LANDS
- PROPOSED PHASE 2 LANDS**
 PARTS 17-31 INCLUSIVE
SERVIENT EASEMENTS
- PROPOSED EASEMENT FOR INGRESS & EGRESS FOR VEHICLE AND PEDESTRIAN ACCESS OVER PARTS 18, 23, 25, 27 & 29 IN FAVOUR OF PHASE 1 & PHASE 3 LANDS
 - PROPOSED EASEMENT FOR PEDESTRIAN ACCESS OVER PARTS 17, 19, 20 & 21 IN FAVOUR OF PHASE 1 AND PHASE 3 LANDS
 - EXISTING EASEMENT OVER PARTS 24 & 25 AS IN INST. SN105982
 - EXISTING EASEMENT OVER PART 31 AS IN INST. ST50177
 - EXISTING EASEMENT OVER PARTS 26, 27, 28, 29, 30 & 33 AS IN INST. ST25642
 - EXISTING EASEMENT OVER PARTS 28 & 29 AS IN INST. ST15738
 - EXISTING EASEMENT OVER PARTS 32 & 33 AS IN INST. ST50637
- PROPOSED PHASE 3 LANDS**
 PARTS 8-16 INCLUSIVE
SERVIENT EASEMENTS
- PROPOSED EASEMENT FOR INGRESS & EGRESS FOR VEHICLE AND PEDESTRIAN ACCESS OVER PARTS 12 & 13 IN FAVOUR OF PHASE 1 & PHASE 2 LANDS
 - PROPOSED EASEMENT FOR PEDESTRIAN ACCESS OVER PARTS 9, 15 & 16 IN FAVOUR OF PHASE 1 & PHASE 2 LANDS
 - EXISTING EASEMENT OVER PARTS 14 & 15 AS IN INST. R0470993E

- DOMINANT EASEMENTS**
- PROPOSED PHASE 1 LANDS**
- TOGETHER WITH
- PROPOSED EASEMENT FOR INGRESS & EGRESS FOR VEHICLE AND PEDESTRIAN ACCESS OVER PARTS 12, 13, 18, 23, 25, 27 & 29
 - PROPOSED EASEMENT FOR PEDESTRIAN ACCESS OVER PARTS 14, 15, 16, 17, 19, 20 & 21
- PROPOSED PHASE 2 LANDS**
- TOGETHER WITH
- PROPOSED EASEMENT FOR INGRESS & EGRESS FOR VEHICLE AND PEDESTRIAN ACCESS OVER PARTS 2, 4, 12 & 13
 - PROPOSED EASEMENT FOR PEDESTRIAN ACCESS OVER PARTS 3, 5, 6, 7, 14, 15 & 16
- PROPOSED PHASE 3 LANDS**
- TOGETHER WITH
- PROPOSED EASEMENT FOR INGRESS AND EGRESS FOR VEHICLE AND PEDESTRIAN ACCESS OVER PARTS 2, 4, 18, 23, 25, 27 & 29
 - PROPOSED EASEMENT FOR PEDESTRIAN ACCESS OVER PARTS 3, 5, 6, 7, 14, 15 & 16

Sheet	Severed 1 Lands			Severed 2 Lands			Severed 3 Lands		
	Severed Parts	Easement Parts (in favour of Severed 2 & 3) Vehicle & Pedestrian	Pedestrian	Severed Parts	Easement Parts (in favour of Severed 1 & 3) Vehicle & Pedestrian	Pedestrian	Severed Parts	Easement Parts (in favour of Severed 1 & 2) Vehicle & Pedestrian	Pedestrian
Ground Floor	1 to 7	2 & 4	3,5,6 & 7	17 to 31	18, 23, 24, 26, 28, 30, 31, 32, 33	23	8 to 16	10 & 12	9,15 & 16
Level 2	1, 4	4	/	17, 19, 20 & 21	22, 23, 24, 26, 28, 30, 31, 32, 33	23	8, 10, 11 & 14	10 & 11	/
Levels 3 & 4	1, 4	4	/	17, 19, 20 & 21	22, 23, 24, 26, 28, 30, 31, 32, 33	23	8, 10, 11 & 14	10 & 11	/
Levels 5 to 30	1	/	/	17, 19, 20 & 21	22, 24, 26, 28, 30, 31, 32, 33	/	8 & 14	/	/
Level A (U/G)	1, 4	4	/	17, 19, 20 & 21	22, 23, 24, 25, 26, 28, 29, 30, 31, 32 & 33	23, 25, 29, 27	8, 13 & 14	13	/

** Blanket Easement for Servicing and Drainage proposed over all Parts of each Severed Lands, in Favour of the other 2 Severed Lands

PART	PHASE 1	PHASE 2	PHASE 3
1	2653.5		
2	1352.0		
3	448.6		
4	1253.2		
5	190.9		
6	39.4		
7	1705.4		
8		2088.5	
9		210.6	
10		123.6	
11			
12		286.3	
13			
14		19.2	
15		75.8	
16		512.1	
17		205.3	
18		624.3	
19		109.0	
20		301.8	
21		37.6	
22		1256.4	
23		251.7	
24		456.5	
25		311.3	
26		45.0	
27		31.7	
28		30.0	
29		123.6	
30		74.7	
31		17.3	
32		64.2	
33		2.0	
TOTAL:	7643	3942	3316

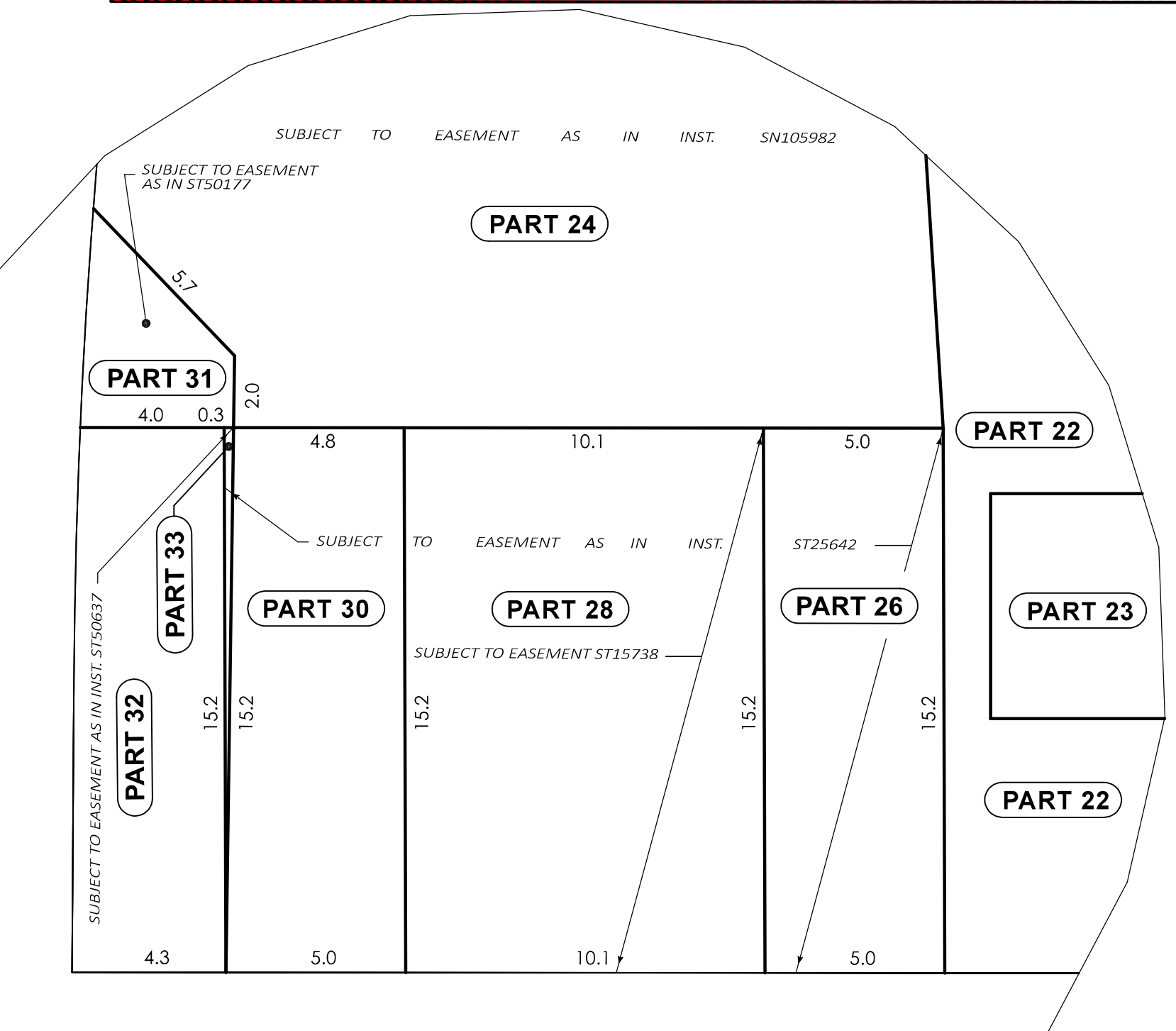
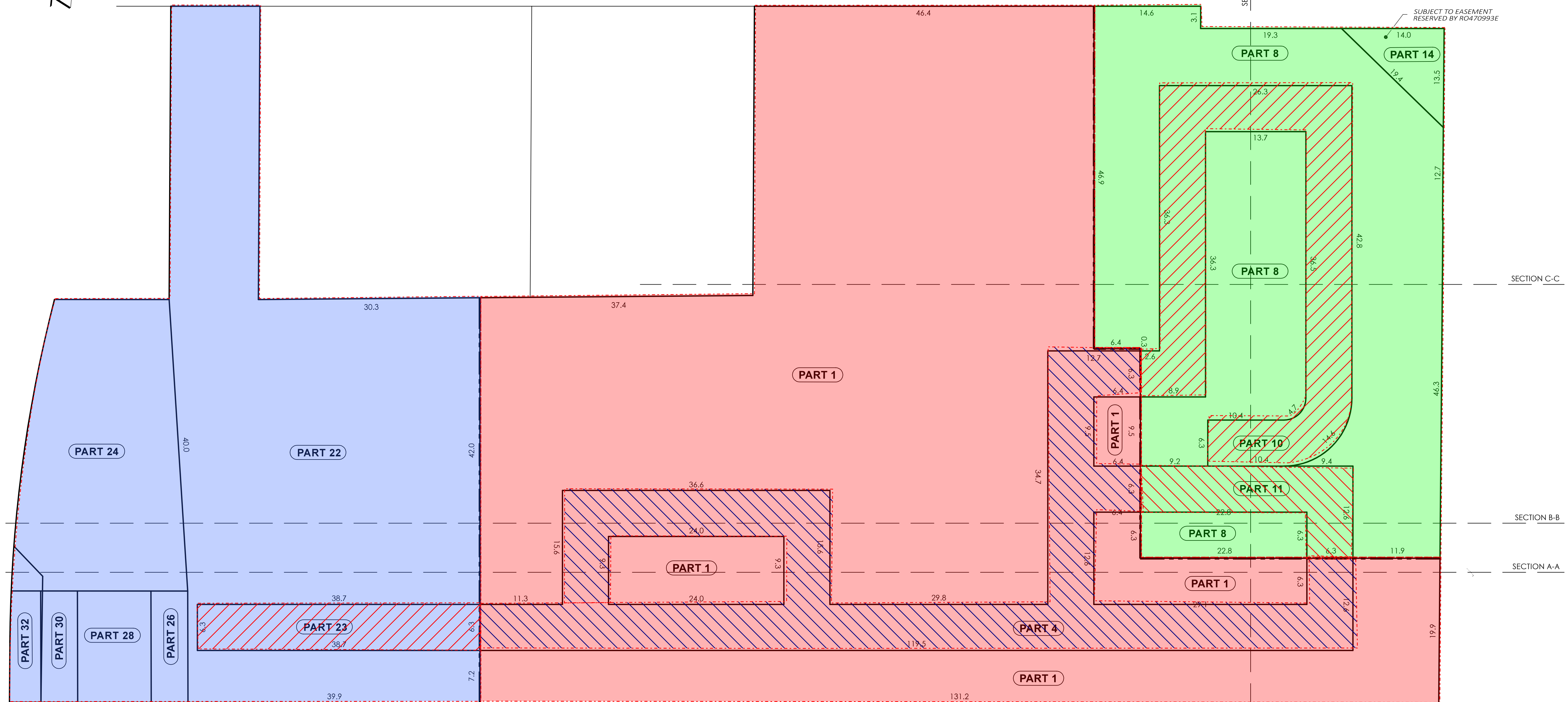
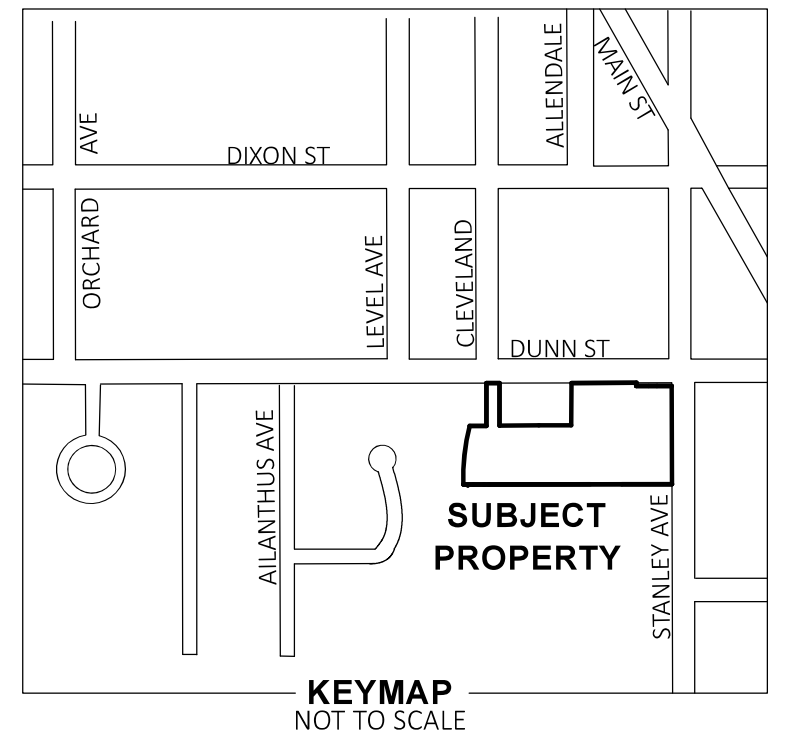
Van Harten
 LAND SURVEYORS - ENGINEERS

Kitchener/Waterloo Ph: 519-742-8371 Guelph Ph: 519-821-2763 Orangeville Ph: 519-940-4110

www.vanharten.com info@vanharten.com

DRAWN BY: JML CHECKED BY: BP PROJECT NO: 27070-19
 Feb 23, 2024 - 10:36:58 AM
 G:\NIAGARA FALLS\PIV 41\ACAD\6663 STANLEY SEVERANCE SKETCH REV1.dwg

LEVEL 2



- PROPOSED PHASE 1 LANDS**
PARTS 1, 2, 3, 4, 5, 6 & 7
- SERVIENT EASEMENTS**
- PROPOSED EASEMENT FOR INGRESS & EGRESS FOR VEHICLE AND PEDESTRIAN ACCESS OVER PARTS 2 & 4 IN FAVOUR OF PHASE 2 & PHASE 3 LANDS
 - PROPOSED EASEMENT FOR PEDESTRIAN ACCESS OVER PARTS 3, 5, 6 & 7 IN FAVOUR OF PHASE 2 & PHASE 3 LANDS
- PROPOSED PHASE 2 LANDS**
PARTS 17-31 INCLUSIVE
- SERVIENT EASEMENTS**
- PROPOSED EASEMENT FOR INGRESS & EGRESS FOR VEHICLE AND PEDESTRIAN ACCESS OVER PARTS 18, 23, 25, 27 & 29 IN FAVOUR OF PHASE 1 & PHASE 3 LANDS
 - PROPOSED EASEMENT FOR PEDESTRIAN ACCESS OVER PARTS 17, 19, 20 & 21 IN FAVOUR OF PHASE 1 AND PHASE 3 LANDS
 - EXISTING EASEMENT OVER PARTS 24 & 25 AS IN INST. SN105982
 - EXISTING EASEMENT OVER PART 31 AS IN INST. ST50177
 - EXISTING EASEMENT OVER PARTS 26, 27, 28, 29, 30 & 33 AS IN INST. ST25642
 - EXISTING EASEMENT OVER PARTS 28 & 29 AS IN INST. ST15738
 - EXISTING EASEMENT OVER PARTS 32 & 33 AS IN INST. ST50637
- PROPOSED PHASE 3 LANDS**
PARTS 8-16 INCLUSIVE
- SERVIENT EASEMENTS**
- PROPOSED EASEMENT FOR INGRESS & EGRESS FOR VEHICLE AND PEDESTRIAN ACCESS OVER PARTS 12 & 13 IN FAVOUR OF PHASE 1 & PHASE 2 LANDS
 - PROPOSED EASEMENT FOR PEDESTRIAN ACCESS OVER PARTS 14, 15 & 16 IN FAVOUR OF PHASE 1 & PHASE 2 LANDS
 - EXISTING EASEMENT OVER PARTS 14 & 15 AS IN INST. RO470993E

- DOMINANT EASEMENTS**
- PROPOSED PHASE 1 LANDS**
- TOGETHER WITH
- PROPOSED EASEMENT FOR INGRESS & EGRESS FOR VEHICLE AND PEDESTRIAN ACCESS OVER PARTS 2, 4, 12 & 13
 - PROPOSED EASEMENT FOR PEDESTRIAN ACCESS OVER PARTS 3, 5, 6, 7, 14, 15 & 16
- PROPOSED PHASE 2 LANDS**
- TOGETHER WITH
- PROPOSED EASEMENT FOR INGRESS & EGRESS FOR VEHICLE AND PEDESTRIAN ACCESS OVER PARTS 2, 4, 12 & 13
 - PROPOSED EASEMENT FOR PEDESTRIAN ACCESS OVER PARTS 3, 5, 6, 7, 14, 15 & 16
- PROPOSED PHASE 3 LANDS**
- TOGETHER WITH
- PROPOSED EASEMENT FOR INGRESS AND EGRESS FOR VEHICLE AND PEDESTRIAN ACCESS OVER PARTS 2, 4, 12, 23, 25, 27 & 29
 - PROPOSED EASEMENT FOR PEDESTRIAN ACCESS OVER PARTS 3, 5, 6, 7, 14, 15 & 16

Sheet	Severed 1 Lands			Severed 2 Lands			Severed 3 Lands		
	Severed Parts	Easement Parts (in favour of Severed 2 & 3) Vehicle & Pedestrian	Pedestrian	Severed Parts	Easement Parts (in favour of Severed 1 & 3) Vehicle & Pedestrian	Pedestrian	Severed Parts	Easement Parts (in favour of Severed 1 & 2) Vehicle & Pedestrian	Pedestrian
Ground Floor	1 to 7	2 & 4	3,5,6 & 7	17 to 31	18, 23, 25, 27 & 29	21	8 to 16	10 & 12	9,15 & 16
Level 2	1, 4	4	/	22, 23, 24, 26, 28, 30, 31, 32, 33	23	/	8, 10, 11 & 14	10 & 11	/
Levels 3 & 4	1, 4	4	/	22, 23, 24, 26, 28, 30, 31, 32, 33	23	/	8, 10, 11 & 14	10 & 11	/
Levels 5 to 30	1	/	/	22, 24, 26, 28, 30, 31, 32, 33	/	/	8 & 14	/	/
Level A (U/G)	1, 4	4	/	22, 23, 24, 25, 26, 28, 29, 30, 31, 32 & 33	23, 25, 29, 27	/	8, 13 & 14	13	/

** Blanket Easement for Servicing and Drainage proposed over all Parts of each Severed Lands, in Favour of the other 2 Severed Lands

PART	PHASE 1	PHASE 2	PHASE 3
1	8204.3		
2			
3			
4	1438.7		
5			
6			
7			
8			2230.7
9			
10			787.5
11			223.0
12			
13			
14			95.0
15			
16			
17			
18			
19			
20			
21			
22		2504.9	
23		243.5	
24		805.4	
25			
28		78.6	
27			
28		153.3	
29			
30		74.7	
31		17.3	
32		64.2	
33		2.0	
TOTAL:	7643	3942	3316

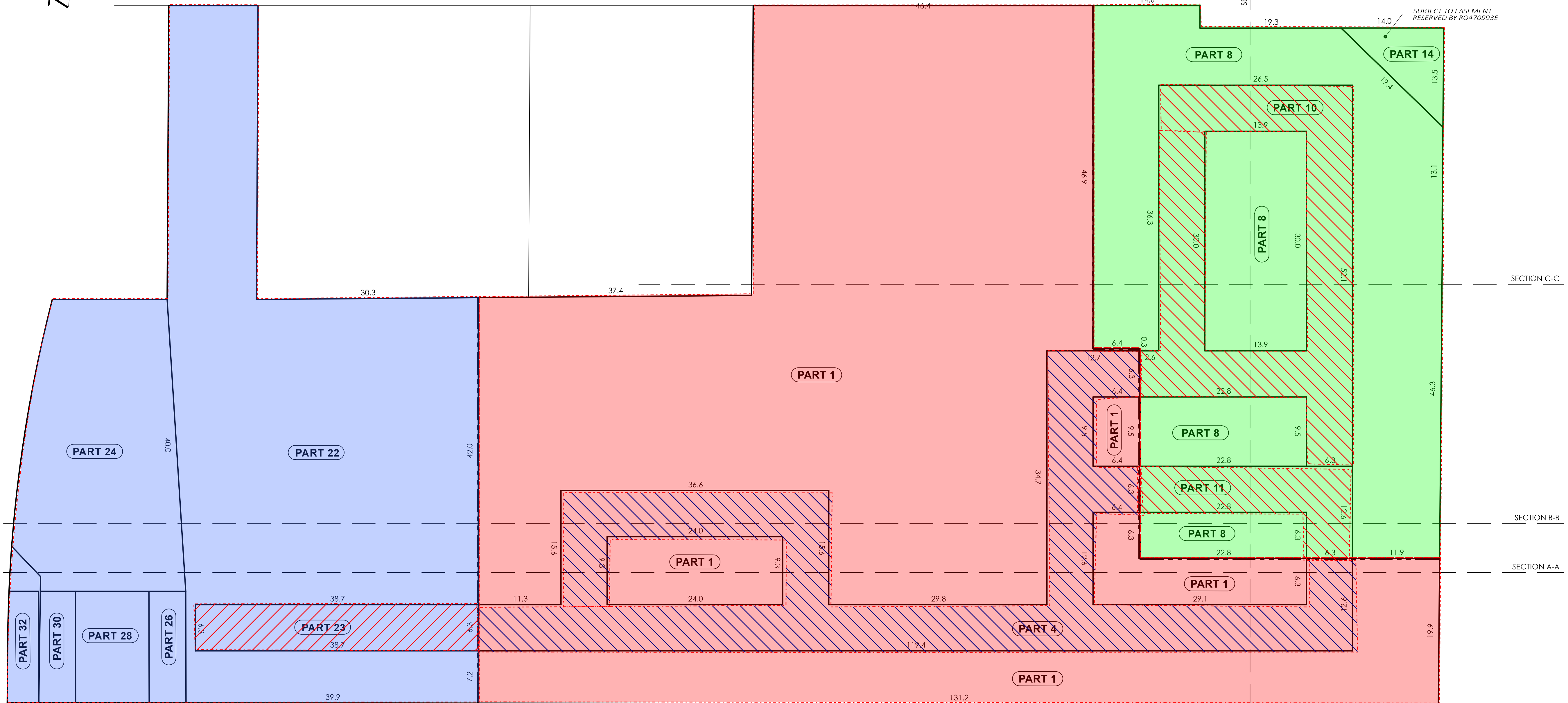
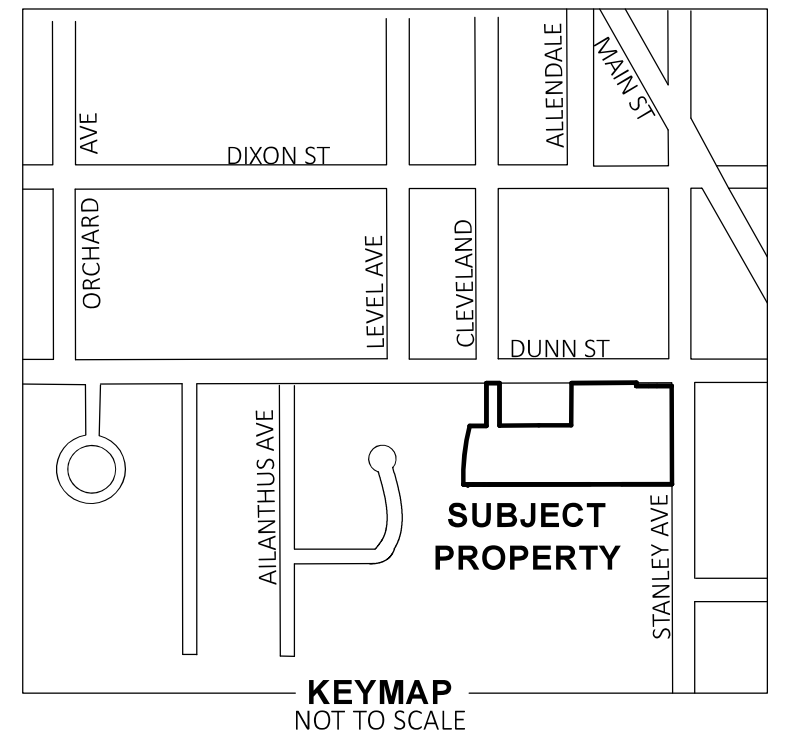
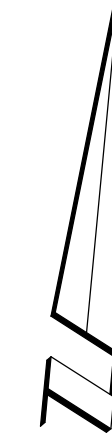
Van Harten
LAND SURVEYORS - ENGINEERS

Kitchener/Waterloo Ph: 519-742-8371 Guelph Ph: 519-821-2763 Orangeville Ph: 519-940-4110

www.vanharten.com info@vanharten.com

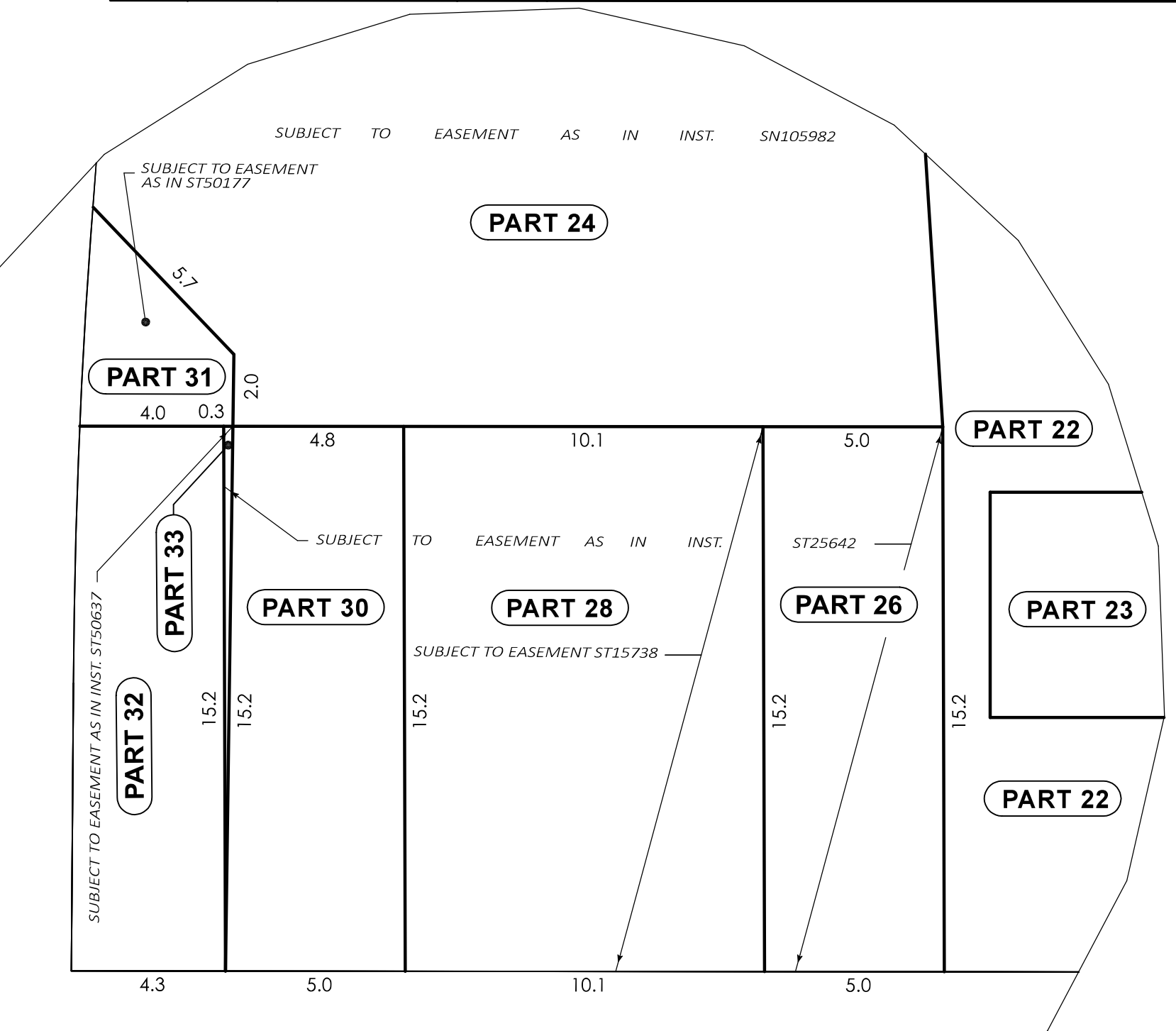
DRAWN BY: JML CHECKED BY: BP PROJECT NO. 27070-19
Feb 23, 2024-10:36:58 AM
G:\NIAGARA FALLS\PL 41\ACAD\6663 STANLEY SEVERANCE SKETCH REV1.dwg

LEVELS 3 & 4



AREA sq m LEVEL 3&4

PART	PHASE 1	PHASE 2	PHASE 3
1	6204.3		
2			
3			
4	1438.7		
5			
6			
7			
8			2210.5
9			
10			787.7
11			223.0
12			
13			
14			95.0
15			
16			
17			
18			
19			
20			
21			
22			2504.9
23			243.5
24			805.4
25			
26			76.6
27			
28			153.3
29			
30			74.7
31			17.3
32			64.2
33			2.0
TOTAL:	7643	3942	3316



- PROPOSED PHASE 1 LANDS**
PARTS 1, 2, 3, 4, 5, 6 & 7
- SERVIENT EASEMENTS**
- PROPOSED EASEMENT FOR INGRESS & EGRESS FOR VEHICLE AND PEDESTRIAN ACCESS OVER PARTS 2 & 4 IN FAVOUR OF PHASE 2 & PHASE 3 LANDS
 - PROPOSED EASEMENT FOR PEDESTRIAN ACCESS OVER PARTS 3, 5, 6 & 7 IN FAVOUR OF PHASE 2 & PHASE 3 LANDS
- PROPOSED PHASE 2 LANDS**
PARTS 17-31 INCLUSIVE
- SERVIENT EASEMENTS**
- PROPOSED EASEMENT FOR INGRESS & EGRESS FOR VEHICLE AND PEDESTRIAN ACCESS OVER PARTS 18, 23, 25, 27 & 29 IN FAVOUR OF PHASE 1 & PHASE 3 LANDS
 - PROPOSED EASEMENT FOR PEDESTRIAN ACCESS OVER PARTS 17, 19, 20 & 21 IN FAVOUR OF PHASE 1 AND PHASE 3 LANDS
 - EXISTING EASEMENT OVER PARTS 24 & 25 AS IN INST. SN105982
 - EXISTING EASEMENT OVER PART 31 AS IN INST. ST50177
 - EXISTING EASEMENT OVER PARTS 26, 27, 28, 29, 30 & 33 AS IN INST. ST25642
 - EXISTING EASEMENT OVER PARTS 28 & 29 AS IN INST. ST15738
 - EXISTING EASEMENT OVER PARTS 32 & 33 AS IN INST. ST50637
- PROPOSED PHASE 3 LANDS**
PARTS 8-16 INCLUSIVE
- SERVIENT EASEMENTS**
- PROPOSED EASEMENT FOR INGRESS & EGRESS FOR VEHICLE AND PEDESTRIAN ACCESS OVER PARTS 12 & 13 IN FAVOUR OF PHASE 1 & PHASE 2 LANDS
 - PROPOSED EASEMENT FOR PEDESTRIAN ACCESS OVER PARTS 14, 15 & 16 IN FAVOUR OF PHASE 1 & PHASE 2 LANDS
 - EXISTING EASEMENT OVER PARTS 14 & 15 AS IN INST. R0470993E

- DOMINANT EASEMENTS**
- PROPOSED PHASE 1 LANDS**
- TOGETHER WITH
- PROPOSED EASEMENT FOR INGRESS & EGRESS FOR VEHICLE AND PEDESTRIAN ACCESS OVER PARTS 12, 13, 18, 23, 25, 27 & 29
 - PROPOSED EASEMENT FOR PEDESTRIAN ACCESS OVER PARTS 14, 15, 16, 17, 19, 20 & 21
- PROPOSED PHASE 2 LANDS**
- TOGETHER WITH
- PROPOSED EASEMENT FOR INGRESS & EGRESS FOR VEHICLE AND PEDESTRIAN ACCESS OVER PARTS 2, 4, 12 & 13
 - PROPOSED EASEMENT FOR PEDESTRIAN ACCESS OVER PARTS 3, 5, 6, 7, 14, 15 & 16
- PROPOSED PHASE 3 LANDS**
- TOGETHER WITH
- PROPOSED EASEMENT FOR INGRESS AND EGRESS FOR VEHICLE AND PEDESTRIAN ACCESS OVER PARTS 2, 4, 18, 23, 25, 27 & 29
 - PROPOSED EASEMENT FOR PEDESTRIAN ACCESS OVER PARTS 3, 5, 6, 7, 14, 15 & 16

Sheet	Severed 1 Lands			Severed 2 Lands			Severed 3 Lands			
	Severed Parts	Easement Parts (in favour of Severed 2 & 3) Vehicle & Pedestrian	Pedestrian	Severed Parts	Easement Parts (in favour of Severed 1 & 3) Vehicle & Pedestrian	Pedestrian	Severed Parts	Easement Parts (in favour of Severed 1 & 2) Vehicle & Pedestrian	Pedestrian	
Ground Floor	1 to 7	2 & 4	3,5,6 & 7	17 to 31	22, 23, 24, 26, 28, 30, 31, 32, 33	23	17, 19, 20 & 21	8 to 16	10 & 12	9,15 & 16
Level 2	1, 4	4	/	22, 23, 24, 26, 28, 30, 31, 32, 33	23	/	8, 10, 11 & 14	10 & 11	/	/
Levels 3 & 4	1, 4	4	/	22, 23, 24, 26, 28, 30, 31, 32, 33	23	/	8, 10, 11 & 14	10 & 11	/	/
Levels 5 to 30	1	/	/	22, 23, 24, 26, 28, 30, 31, 32, 33	/	/	8 & 14	/	/	/
Level A (U/G)	1, 4	4	/	22, 23, 24, 25, 26, 28, 29, 30, 31, 32 & 33	23, 25, 29, 27	/	8, 13 & 14	13	/	/

** Blanket Easement for Servicing and Drainage proposed over all Parts of each Severed Lands, in Favour of the other 2 Severed Lands

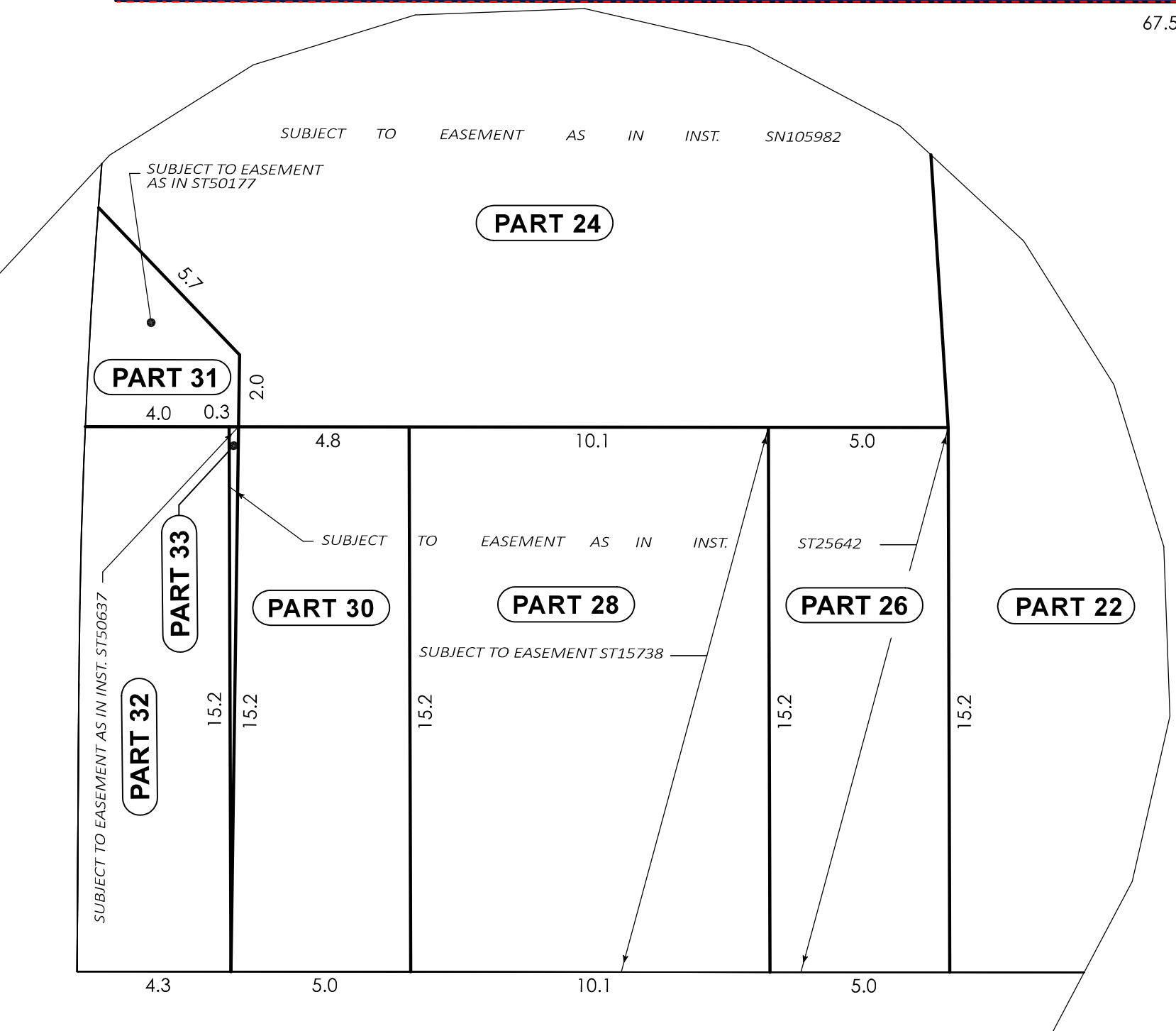
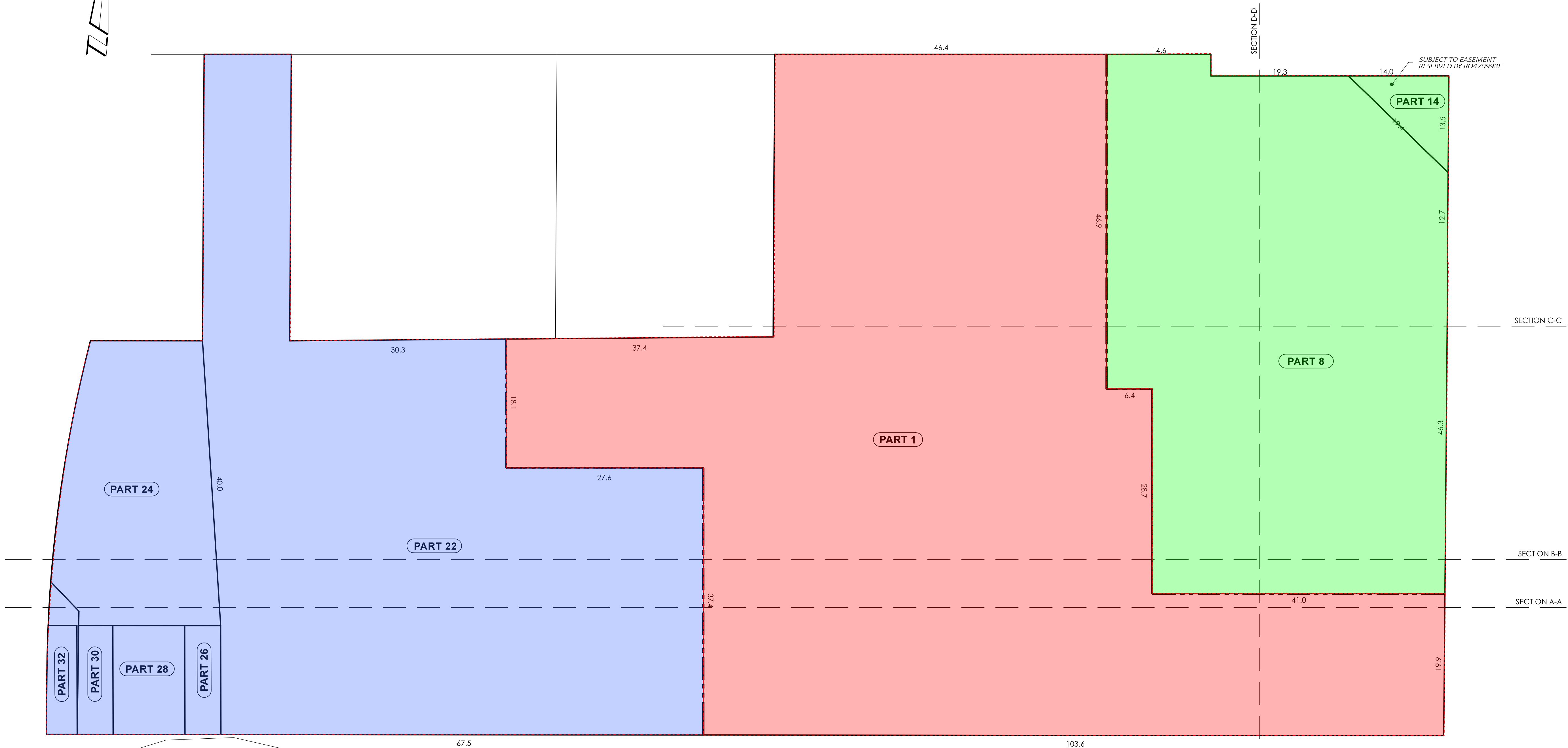
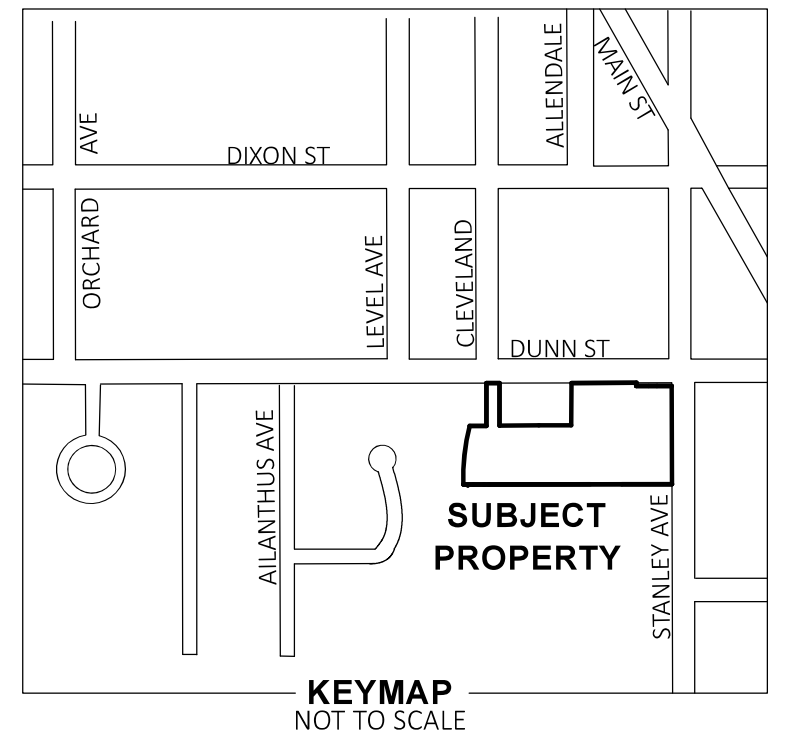
Van Harten
LAND SURVEYORS - ENGINEERS

Kitchener/Waterloo Ph: 519-742-8371 | Guelph Ph: 519-821-2763 | Orangeville Ph: 519-940-4110

www.vanharten.com | info@vanharten.com

DRAWN BY: JML | CHECKED BY: BP | PROJECT NO.: 27070-19
Feb 23, 2024 - 10:36:58 AM
G:\NIAGARA FALLS\PIV\41\ACAD\6663 STANLEY SEVERANCE SKETCH REV1.dwg

LEVELS 5 TO 30



- PROPOSED PHASE 1 LANDS**
PARTS 1, 2, 3, 4, 5, 6 & 7
- SERVIENT EASEMENTS**
- PROPOSED EASEMENT FOR INGRESS & EGRESS FOR VEHICLE AND PEDESTRIAN ACCESS OVER PARTS 2 & 4 IN FAVOUR OF PHASE 2 & PHASE 3 LANDS
 - PROPOSED EASEMENT FOR PEDESTRIAN ACCESS OVER PARTS 3, 5, 6 & 7 IN FAVOUR OF PHASE 2 & PHASE 3 LANDS
- PROPOSED PHASE 2 LANDS**
PARTS 17-31 INCLUSIVE
- SERVIENT EASEMENTS**
- PROPOSED EASEMENT FOR INGRESS & EGRESS FOR VEHICLE AND PEDESTRIAN ACCESS OVER PARTS 18, 23, 25, 27 & 29 IN FAVOUR OF PHASE 1 & PHASE 3 LANDS
 - PROPOSED EASEMENT FOR PEDESTRIAN ACCESS OVER PARTS 17, 19, 20 & 21 IN FAVOUR OF PHASE 1 AND PHASE 3 LANDS
 - EXISTING EASEMENT OVER PARTS 24 & 25 AS IN INST. SN105982
 - EXISTING EASEMENT OVER PART 31 AS IN INST. ST50177
 - EXISTING EASEMENT OVER PARTS 26, 27, 28, 29, 30 & 33 AS IN INST. ST25642
 - EXISTING EASEMENT OVER PARTS 28 & 29 AS IN INST. ST15738
 - EXISTING EASEMENT OVER PARTS 32 & 33 AS IN INST. ST50637
- PROPOSED PHASE 3 LANDS**
PARTS 8-16 INCLUSIVE
- SERVIENT EASEMENTS**
- PROPOSED EASEMENT FOR INGRESS & EGRESS FOR VEHICLE AND PEDESTRIAN ACCESS OVER PARTS 12 & 13 IN FAVOUR OF PHASE 1 & PHASE 2 LANDS
 - PROPOSED EASEMENT FOR PEDESTRIAN ACCESS OVER PARTS 14, 15 & 16 IN FAVOUR OF PHASE 1 & PHASE 2 LANDS
 - EXISTING EASEMENT OVER PARTS 14 & 15 AS IN INST. R0470993E

- DOMINANT EASEMENTS**
- PROPOSED PHASE 1 LANDS**
- TOGETHER WITH
- PROPOSED EASEMENT FOR INGRESS & EGRESS FOR VEHICLE AND PEDESTRIAN ACCESS OVER PARTS 12, 13, 18, 23, 25, 27 & 29
 - PROPOSED EASEMENT FOR PEDESTRIAN ACCESS OVER PARTS 14, 15, 16, 17, 19, 20 & 21
- PROPOSED PHASE 2 LANDS**
- TOGETHER WITH
- PROPOSED EASEMENT FOR INGRESS & EGRESS FOR VEHICLE AND PEDESTRIAN ACCESS OVER PARTS 2, 4, 12 & 13
 - PROPOSED EASEMENT FOR PEDESTRIAN ACCESS OVER PARTS 3, 5, 6, 7, 14, 15 & 16
- PROPOSED PHASE 3 LANDS**
- TOGETHER WITH
- PROPOSED EASEMENT FOR INGRESS AND EGRESS FOR VEHICLE AND PEDESTRIAN ACCESS OVER PARTS 2, 4, 18, 23, 25, 27 & 29
 - PROPOSED EASEMENT FOR PEDESTRIAN ACCESS OVER PARTS 3, 5, 6, 7, 14, 15 & 16

Sheet	Severed 1 Lands			Severed 2 Lands			Severed 3 Lands		
	Severed Parts	Easement Parts (in favour of Severed 2 & 3) Vehicle & Pedestrian	Pedestrian	Severed Parts	Easement Parts (in favour of Severed 1 & 3) Vehicle & Pedestrian	Pedestrian	Severed Parts	Easement Parts (in favour of Severed 1 & 2) Vehicle & Pedestrian	Pedestrian
Ground Floor	1 to 7	2 & 4	3,5,6 & 7	17 to 31	18, 23, 25, 27 & 29	21	8 to 16	10 & 12	9,15 & 16
Level 2	1, 4	4	/	22, 23, 24, 26, 28, 30, 31, 32, 33	23	/	8, 10, 11 & 14	10 & 11	/
Levels 3 & 4	1, 4	4	/	22, 23, 24, 26, 28, 30, 31, 32, 33	23	/	8, 10, 11 & 14	10 & 11	/
Levels 5 to 30	1	/	/	22, 24, 26, 28, 30, 31, 32, 33	/	/	8 & 14	/	/
Level A (U/G)	1, 4	4	/	22, 23, 24, 25, 26, 28, 29, 30, 31, 32 & 33	23, 25, 29, 27	/	8, 13 & 14	13	/

** Blanket Easement for Servicing and Drainage proposed over all Parts of each Severed Lands, in Favour of the other 2 Severed Lands

AREA sq m LEVEL 5-30

PART	PHASE 1	PHASE 2	PHASE 3
1	6611.5		
2			
3			
4			
5			
6			
7			
8			3221.2
9			
10			
11			
12			
13			
14			95.0
15			
16			
17			
18			
19			
20			
21			
22			3780.0
23			
24			805.4
25			
26			78.6
27			
28			153.3
29			
30			74.7
31			17.3
32			64.2
33			2.0
TOTAL:	6612	4973	3316

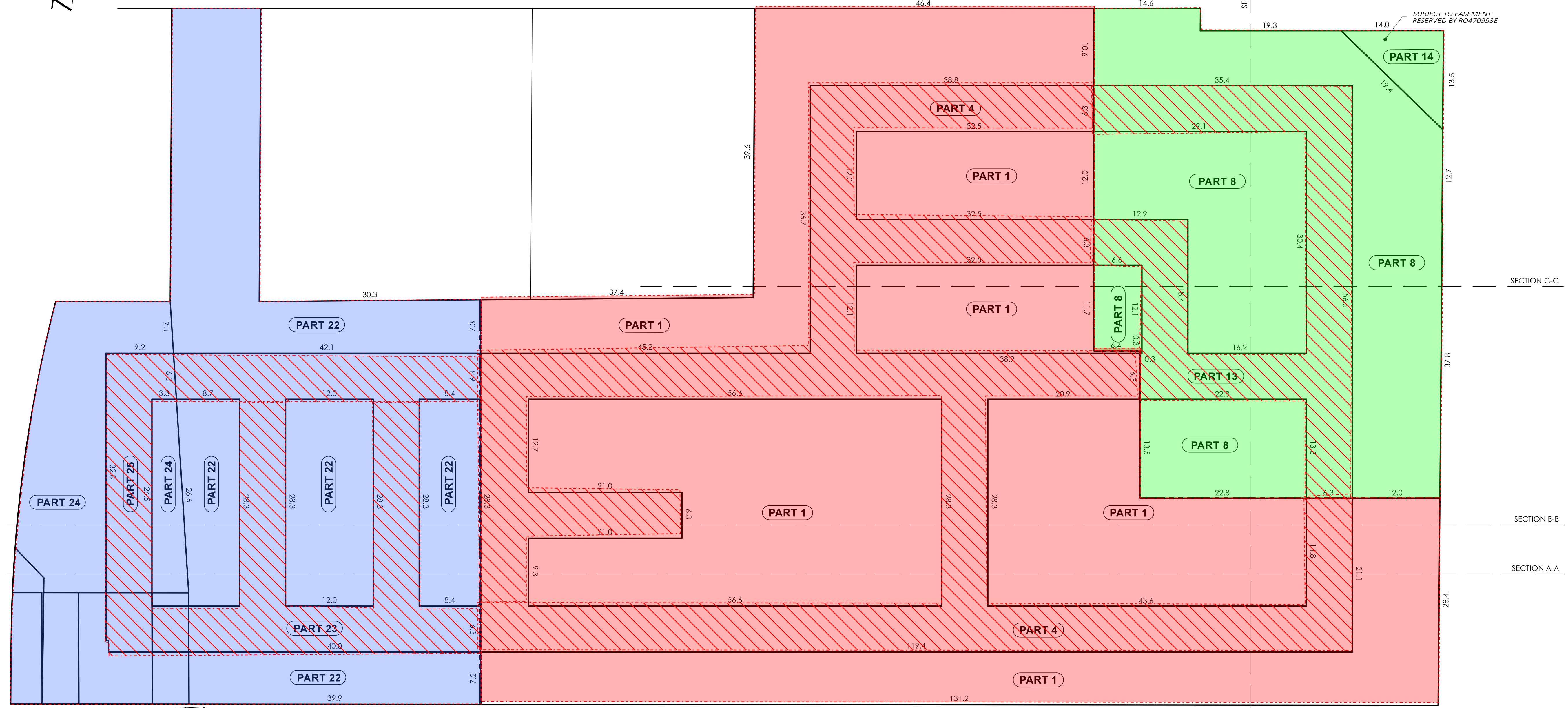
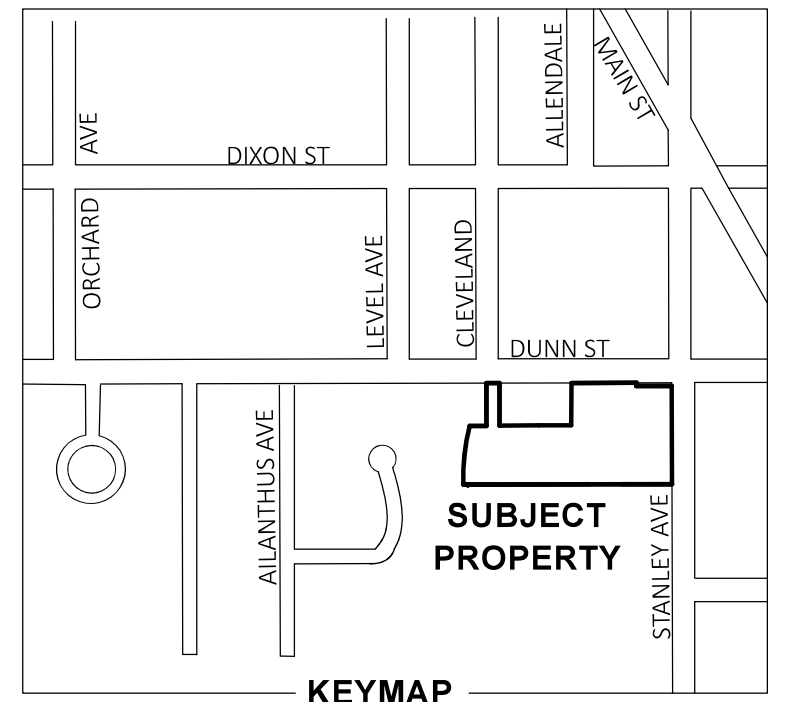
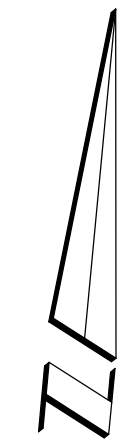
Van Harten
LAND SURVEYORS - ENGINEERS

Kitchener/Waterloo Ph: 519-742-8371 Guelph Ph: 519-821-2763 Orangeville Ph: 519-940-4110

www.vanharten.com info@vanharten.com

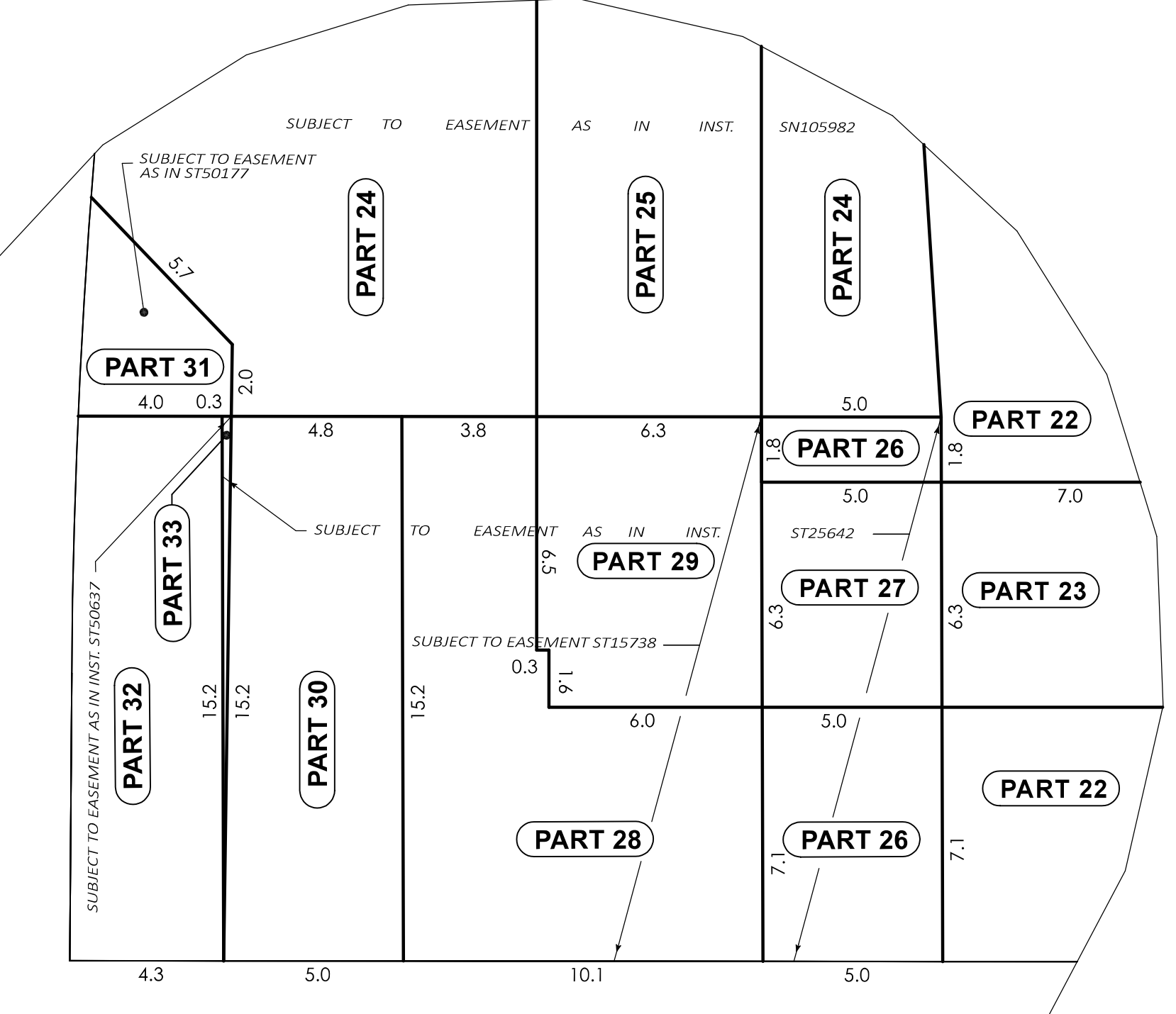
DRAWN BY: JML CHECKED BY: BP PROJECT No. 27070-19
Feb 23, 2024 - 10:36:58 AM
G:\NIAGARA FALLS\PL\41\ACAD\6663 STANLEY SEVERANCE SKETCH REV1.dwg

LEVEL A (UNDERGROUND PARKING)



AREA sq m LEVEL 'A' (UNDER. PARKING)

PART	PHASE 1	PHASE 2	PHASE 3
1	5437.4		
2			
3			
4	2553.5		
5			
6			
7			
8			2032.9
9			
10			
11			
12			
13			840.4
14			95.0
15			
16			
17			
18			
19			
20			
21			
22		1876.0	
23		872.5	
24		579.4	
25		226.0	
26		45.0	
27		31.7	
28		102.6	
29		50.7	
30		74.7	
31		17.3	
32		64.2	
33		2.0	
TOTAL:	7991	3942	2968



- PROPOSED PHASE 1 LANDS**
PARTS 1, 2, 3, 4, 5, 6 & 7
- SERVIENT EASEMENTS**
- PROPOSED EASEMENT FOR INGRESS & EGRESS FOR VEHICLE AND PEDESTRIAN ACCESS OVER PARTS 2 & 4 IN FAVOUR OF PHASE 2 & PHASE 3 LANDS
 - PROPOSED EASEMENT FOR PEDESTRIAN ACCESS OVER PARTS 3, 5, 6 & 7 IN FAVOUR OF PHASE 2 & PHASE 3 LANDS
- PROPOSED PHASE 2 LANDS**
PARTS 17-31 INCLUSIVE
- SERVIENT EASEMENTS**
- PROPOSED EASEMENT FOR INGRESS & EGRESS FOR VEHICLE AND PEDESTRIAN ACCESS OVER PARTS 18, 23, 25, 27 & 29 IN FAVOUR OF PHASE 1 & PHASE 3 LANDS
 - PROPOSED EASEMENT FOR PEDESTRIAN ACCESS OVER PARTS 17, 19, 20 & 21 IN FAVOUR OF PHASE 1 AND PHASE 3 LANDS
 - EXISTING EASEMENT OVER PARTS 24 & 25 AS IN INST. SN105982
 - EXISTING EASEMENT OVER PART 31 AS IN INST. ST50177
 - EXISTING EASEMENT OVER PARTS 26, 27, 28, 29, 30 & 33 AS IN INST. ST25642
 - EXISTING EASEMENT OVER PARTS 28 & 29 AS IN INST. ST15738
 - EXISTING EASEMENT OVER PARTS 32 & 33 AS IN INST. ST50637
- PROPOSED PHASE 3 LANDS**
PARTS 8-16 INCLUSIVE
- SERVIENT EASEMENTS**
- PROPOSED EASEMENT FOR INGRESS & EGRESS FOR VEHICLE AND PEDESTRIAN ACCESS OVER PARTS 12 & 13 IN FAVOUR OF PHASE 1 & PHASE 2 LANDS
 - PROPOSED EASEMENT FOR PEDESTRIAN ACCESS OVER PARTS 14, 15 & 16 IN FAVOUR OF PHASE 1 & PHASE 2 LANDS
 - EXISTING EASEMENT OVER PARTS 14 & 15 AS IN INST. RO470993E

- DOMINANT EASEMENTS**
- PROPOSED PHASE 1 LANDS**
- TOGETHER WITH
- PROPOSED EASEMENT FOR INGRESS & EGRESS FOR VEHICLE AND PEDESTRIAN ACCESS OVER PARTS 12, 13, 18, 23, 25, 27 & 29
 - PROPOSED EASEMENT FOR PEDESTRIAN ACCESS OVER PARTS 14, 15, 16, 17, 19, 20 & 21
- PROPOSED PHASE 2 LANDS**
- TOGETHER WITH
- PROPOSED EASEMENT FOR INGRESS & EGRESS FOR VEHICLE AND PEDESTRIAN ACCESS OVER PARTS 2, 4, 12 & 13
 - PROPOSED EASEMENT FOR PEDESTRIAN ACCESS OVER PARTS 3, 5, 6, 7, 14, 15 & 16
- PROPOSED PHASE 3 LANDS**
- TOGETHER WITH
- PROPOSED EASEMENT FOR INGRESS AND EGRESS FOR VEHICLE AND PEDESTRIAN ACCESS OVER PARTS 2, 4, 18, 23, 25, 27 & 29
 - PROPOSED EASEMENT FOR PEDESTRIAN ACCESS OVER PARTS 3, 5, 6, 7, 14, 15 & 16

Sheet	Severed 1 Lands			Severed 2 Lands			Severed 3 Lands		
	Severed Parts	Easement Parts (in favour of Severed 2 & 3) Vehicle & Pedestrian	Pedestrian	Severed Parts	Easement Parts (in favour of Severed 1 & 3) Vehicle & Pedestrian	Pedestrian	Severed Parts	Easement Parts (in favour of Severed 1 & 2) Vehicle & Pedestrian	Pedestrian
Ground Floor	1 to 7	2 & 4	3,5,6 & 7	17 to 31	18, 23, 24, 26, 28, 30, 31, 32, 33	23	8 to 16	10 & 12	9,15 & 16
Level 2	1, 4	4	/	22, 23, 24, 26, 28, 30, 31, 32, 33	23	/	8, 10, 11 & 14	10 & 11	/
Levels 3 & 4	1, 4	4	/	22, 23, 24, 26, 28, 30, 31, 32, 33	23	/	8, 10, 11 & 14	10 & 11	/
Levels 5 to 30	1	/	/	22, 24, 26, 28, 30, 31, 32, 33	/	/	8 & 14	/	/
Level A (U/G)	1, 4	4	/	22, 23, 24, 25, 26, 28, 29, 30, 31, 32 & 33	23, 25, 29, 27	/	8, 13 & 14	13	/

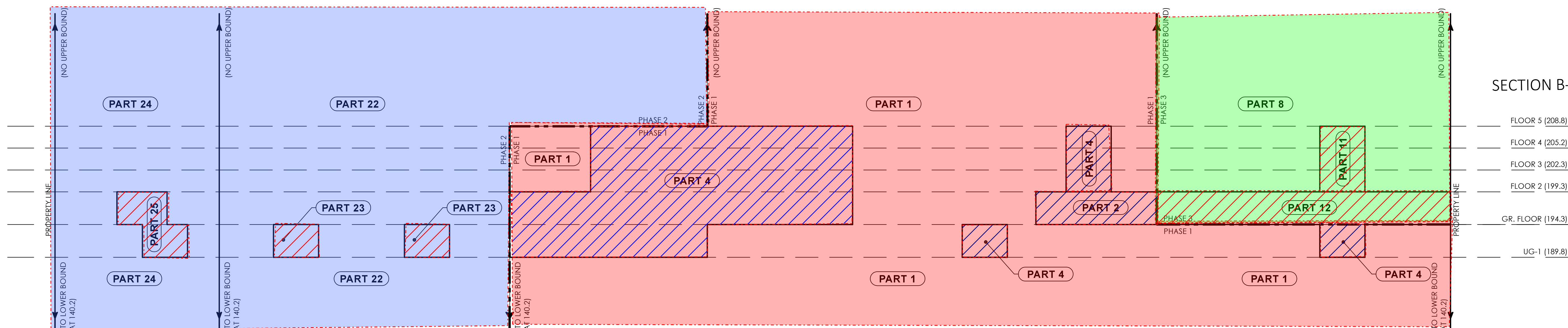
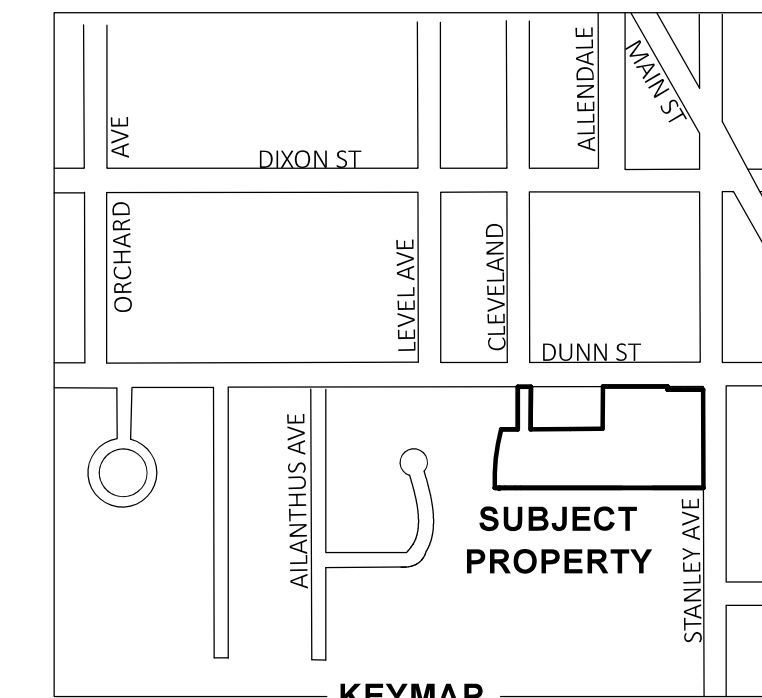
** Blanket Easement for Servicing and Drainage proposed over all Parts of each Severed Lands, in Favour of the other 2 Severed Lands

Van Harten
LAND SURVEYORS - ENGINEERS

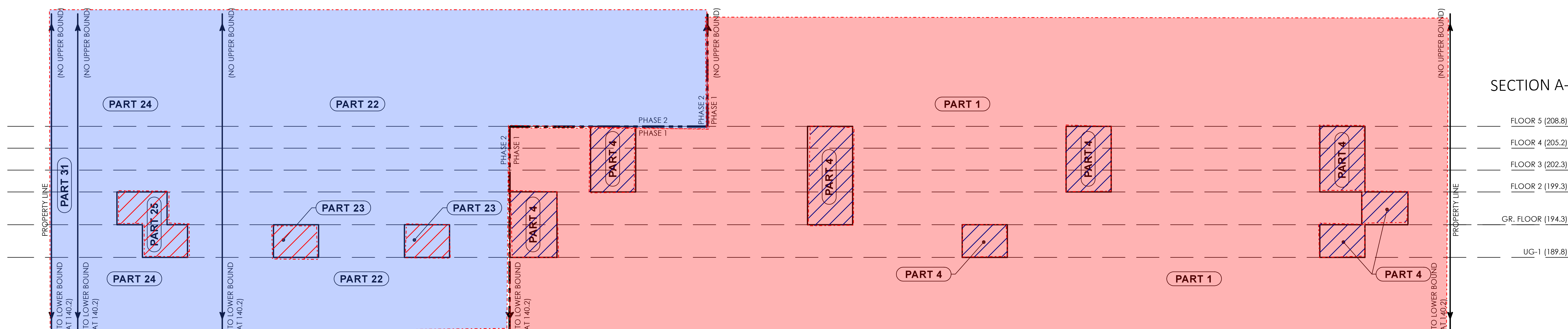
Kitchener/Waterloo Ph: 519-742-8371 Guelph Ph: 519-821-2763 Orangeville Ph: 519-940-4110

www.vanharten.com info@vanharten.com

DRAWN BY: JML CHECKED BY: BP PROJECT NO. 27070-19
Feb 23, 2024 - 10:36:58 AM
G:\NIAGARA FALLS\PL\41\ACAD\6663 STANLEY SEVERANCE SKETCH REV1.dwg



SECTION B-B



SECTION A-A

PROPOSED PHASE 1 LANDS

- PARTS 1, 2, 3, 4, 5, 6 & 7
SERVIENT EASEMENTS
 • PROPOSED EASEMENT FOR INGRESS & EGRESS FOR VEHICLE AND PEDESTRIAN ACCESS OVER PARTS 2 & 4 IN FAVOUR OF PHASE 2 & PHASE 3 LANDS
 • PROPOSED EASEMENT FOR PEDESTRIAN ACCESS OVER PARTS 3, 5, 6 & 7 IN FAVOUR OF PHASE 2 & PHASE 3 LANDS

PROPOSED PHASE 2 LANDS

- PARTS 17-31 INCLUSIVE
SERVIENT EASEMENTS
 • PROPOSED EASEMENT FOR INGRESS & EGRESS FOR VEHICLE AND PEDESTRIAN ACCESS OVER PARTS 18, 23, 25, 27 & 29 IN FAVOUR OF PHASE 1 & PHASE 3 LANDS
 • PROPOSED EASEMENT FOR PEDESTRIAN ACCESS OVER PARTS 17, 19, 20 & 21 IN FAVOUR OF PHASE 1 AND PHASE 3 LANDS
 • EXISTING EASEMENT OVER PARTS 24 & 25 AS IN INST. SN105982
 • EXISTING EASEMENT OVER PART 31 AS IN INST. ST50177
 • EXISTING EASEMENT OVER PARTS 26, 27, 28, 29, 30 & 33 AS IN INST. ST25642
 • EXISTING EASEMENT OVER PARTS 28 & 29 AS IN INST. ST15738
 • EXISTING EASEMENT OVER PARTS 32 & 33 AS IN INST. ST50637

PROPOSED PHASE 3 LANDS

- PARTS 8-16 INCLUSIVE
SERVIENT EASEMENTS
 • PROPOSED EASEMENT FOR INGRESS & EGRESS FOR VEHICLE AND PEDESTRIAN ACCESS OVER PARTS 12 & 13 IN FAVOUR OF PHASE 1 & PHASE 2 LANDS
 • PROPOSED EASEMENT FOR PEDESTRIAN ACCESS OVER PARTS 14, 15 & 16 IN FAVOUR OF PHASE 1 & PHASE 2 LANDS
 • EXISTING EASEMENT OVER PARTS 14 & 15 AS IN INST. R0470993E

DOMINANT EASEMENTS

PROPOSED PHASE 1 LANDS

- TOGETHER WITH
 • PROPOSED EASEMENT FOR INGRESS & EGRESS FOR VEHICLE AND PEDESTRIAN ACCESS OVER PARTS 12, 13, 18, 23, 25, 27 & 29
 • PROPOSED EASEMENT FOR PEDESTRIAN ACCESS OVER PARTS 14, 15, 16, 17, 19, 20 & 21

PROPOSED PHASE 2 LANDS

- TOGETHER WITH
 • PROPOSED EASEMENT FOR INGRESS & EGRESS FOR VEHICLE AND PEDESTRIAN ACCESS OVER PARTS 2, 4, 12 & 13
 • PROPOSED EASEMENT FOR PEDESTRIAN ACCESS OVER PARTS 3, 5, 6, 7, 14, 15 & 16

PROPOSED PHASE 3 LANDS

- TOGETHER WITH
 • PROPOSED EASEMENT FOR INGRESS AND EGRESS FOR VEHICLE AND PEDESTRIAN ACCESS OVER PARTS 2, 4, 18, 23, 25, 27 & 29
 • PROPOSED EASEMENT FOR PEDESTRIAN ACCESS OVER PARTS 3, 5, 6, 7, 14, 15 & 16

Sheet	Severed 1 Lands			Severed 2 Lands			Severed 3 Lands		
	Severed Parts	Easement Parts (in favour of Severed 2 & 3)		Severed Parts	Easement Parts (in favour of Severed 1 & 3)		Severed Parts	Easement Parts (in favour of Severed 1 & 2)	
		Vehicle & Pedestrian	Pedestrian		Vehicle & Pedestrian	Pedestrian		Vehicle & Pedestrian	Pedestrian
Ground Floor	1 to 7	2 & 4	3,5,6 & 7	17 to 31	18, 23, 25, 27 & 29	17, 19, 20 & 21	8 to 16	10 & 12	9,15 & 16
Level 2	1, 4	4	/	22, 23, 24, 26, 28, 30, 31, 32, 33	23	/	8, 10, 11 & 14	10 & 11	/
Levels 3 & 4	1, 4	4	/	22, 23, 24, 26, 28, 30, 31, 32, 33	23	/	8, 10, 11 & 14	10 & 11	/
Levels 5 to 30	1	/	/	22, 24, 26, 28, 30, 31, 32, 33	/	/	8 & 14	/	/
Level A (U/G)	1, 4	4	/	22, 23, 24, 25, 26, 28, 29, 30, 31 32 & 33	23, 25, 29, 27	/	8, 13 & 14	13	/

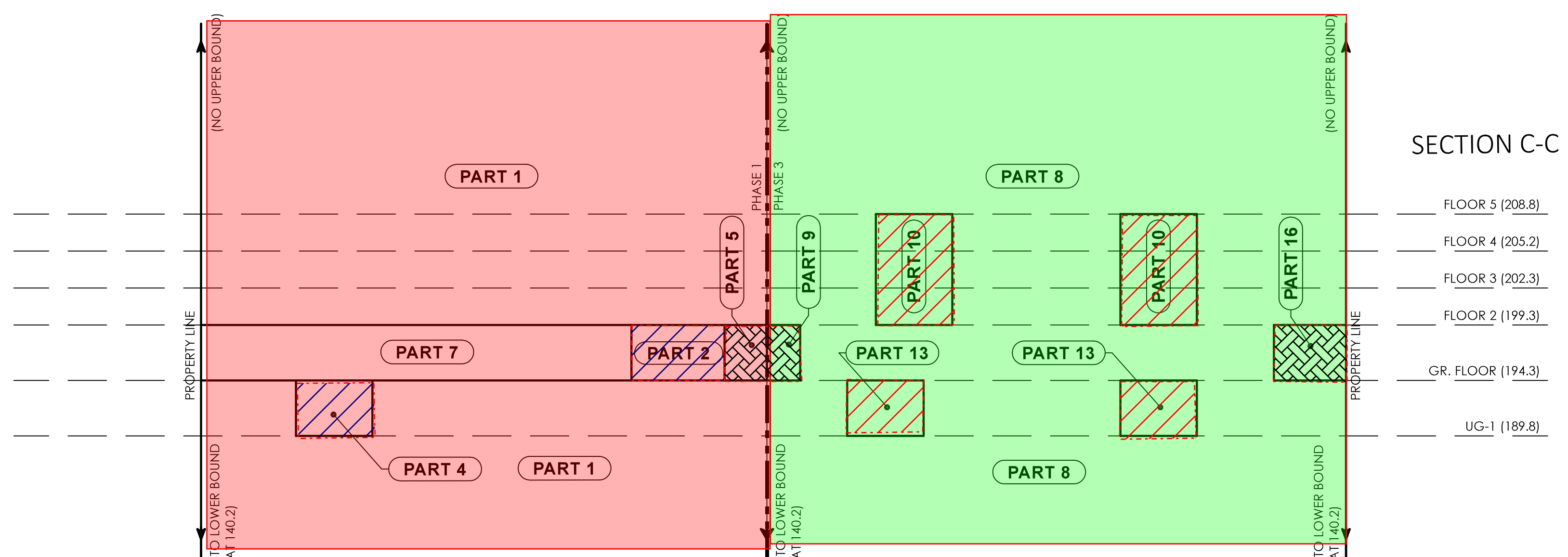
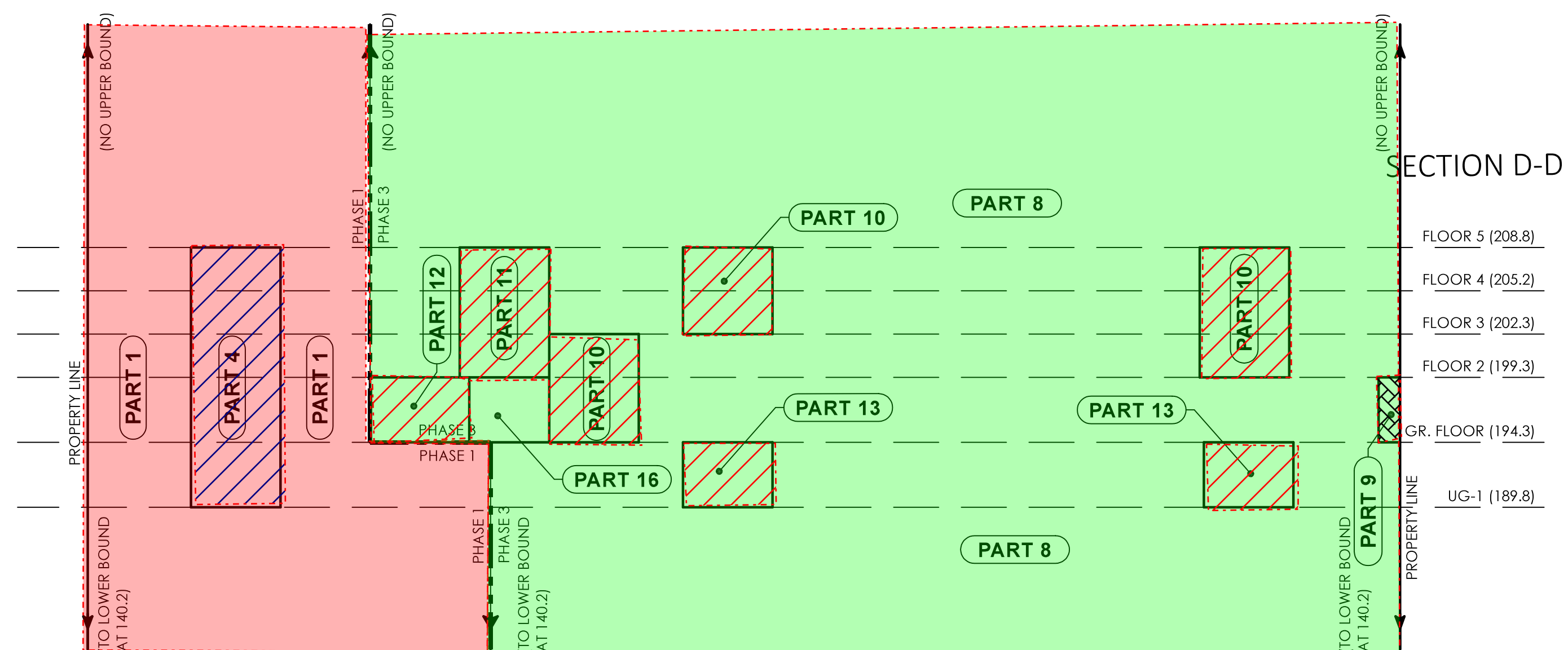
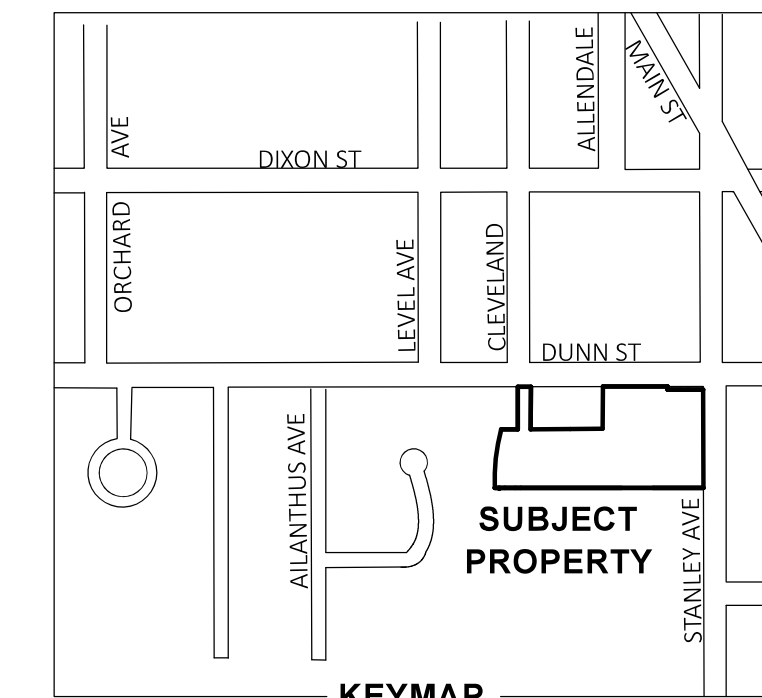
** Blanket Easement for Servicing and Drainage proposed over all Parts of each Severed Lands, in Favour of the other 2 Severed Lands



Kitchener/Waterloo Ph: 519-742-8371 Guelph Ph: 519-821-2763 Orangeville Ph: 519-940-4110

www.vanharten.com info@vanharten.com

DRAWN BY: JML CHECKED BY: BP PROJECT NO: 27070-19
 Apr 2, 2024-11:44:20 AM
 G:\NIAGARA FALLS\PL-41\ACAD\6663 STANLEY SEVERANCE SKETCH REV1.dwg



PROPOSED PHASE 1 LANDS

- PARTS 1, 2, 3, 4, 5, 6 & 7
SERVIENT EASEMENTS
 • PROPOSED EASEMENT FOR INGRESS & EGRESS FOR VEHICLE AND PEDESTRIAN ACCESS OVER PARTS 2 & 4 IN FAVOUR OF PHASE 2 & PHASE 3 LANDS
 • PROPOSED EASEMENT FOR PEDESTRIAN ACCESS OVER PARTS 3, 5, 6 & 7 IN FAVOUR OF PHASE 2 & PHASE 3 LANDS

PROPOSED PHASE 2 LANDS

- PARTS 17-31 INCLUSIVE
SERVIENT EASEMENTS
 • PROPOSED EASEMENT FOR INGRESS & EGRESS FOR VEHICLE AND PEDESTRIAN ACCESS OVER PARTS 18, 23, 25, 27 & 29 IN FAVOUR OF PHASE 1 & PHASE 3 LANDS
 • PROPOSED EASEMENT FOR PEDESTRIAN ACCESS OVER PARTS 17, 19, 20 & 21 IN FAVOUR OF PHASE 1 AND PHASE 3 LANDS
 • EXISTING EASEMENT OVER PARTS 24 & 25 AS IN INST. SN105982
 • EXISTING EASEMENT OVER PART 31 AS IN INST. ST50177
 • EXISTING EASEMENT OVER PARTS 26, 27, 28, 29, 30 & 33 AS IN INST. ST25642
 • EXISTING EASEMENT OVER PARTS 28 & 29 AS IN INST. ST15738
 • EXISTING EASEMENT OVER PARTS 32 & 33 AS IN INST. ST50637

PROPOSED PHASE 3 LANDS

- PARTS 8-16 INCLUSIVE
SERVIENT EASEMENTS
 • PROPOSED EASEMENT FOR INGRESS & EGRESS FOR VEHICLE AND PEDESTRIAN ACCESS OVER PARTS 12 & 13 IN FAVOUR OF PHASE 1 & PHASE 2 LANDS
 • PROPOSED EASEMENT FOR PEDESTRIAN ACCESS OVER PARTS 14, 15 & 16 IN FAVOUR OF PHASE 1 & PHASE 2 LANDS
 • EXISTING EASEMENT OVER PARTS 14 & 15 AS IN INST. R0470993E

DOMINANT EASEMENTS

PROPOSED PHASE 1 LANDS

- TOGETHER WITH
 • PROPOSED EASEMENT FOR INGRESS & EGRESS FOR VEHICLE AND PEDESTRIAN ACCESS OVER PARTS 12, 13, 18, 23, 25, 27 & 29
 • PROPOSED EASEMENT FOR PEDESTRIAN ACCESS OVER PARTS 14, 15, 16, 17, 19, 20 & 21

PROPOSED PHASE 2 LANDS

- TOGETHER WITH
 • PROPOSED EASEMENT FOR INGRESS & EGRESS FOR VEHICLE AND PEDESTRIAN ACCESS OVER PARTS 2, 4, 12 & 13
 • PROPOSED EASEMENT FOR PEDESTRIAN ACCESS OVER PARTS 3, 5, 6, 7, 14, 15 & 16

PROPOSED PHASE 3 LANDS

- TOGETHER WITH
 • PROPOSED EASEMENT FOR INGRESS AND EGRESS FOR VEHICLE AND PEDESTRIAN ACCESS OVER PARTS 2, 4, 18, 23, 25, 27 & 29
 • PROPOSED EASEMENT FOR PEDESTRIAN ACCESS OVER PARTS 3, 5, 6, 7, 14, 15 & 16

Sheet	Severed 1 Lands			Severed 2 Lands			Severed 3 Lands		
	Severed Parts	Easement Parts (in favour of Severed 2 & 3)		Severed Parts	Easement Parts (in favour of Severed 1 & 3)		Severed Parts	Easement Parts (in favour of Severed 1 & 2)	
		Vehicle & Pedestrian	Pedestrian		Vehicle & Pedestrian	Pedestrian		Vehicle & Pedestrian	Pedestrian
Ground Floor	1 to 7	2 & 4	3,5,6 & 7	17 to 31	18, 23, 25, 27 & 29	17, 19, 20 & 21	8 to 16	10 & 12	9,15 & 16
Level 2	1, 4	4	/	22, 23, 24, 26, 28, 30, 31,32,33	23	/	8, 10, 11 & 14	10 & 11	/
Levels 3 & 4	1, 4	4	/	22, 23, 24,26, 28, 30, 31,32,33	23	/	8, 10, 11 & 14	10 & 11	/
Levels 5 to 30	1	/	/	22, 23, 24, 26, 28, 30, 31,32, 33	/	/	8 & 14	/	/
Level A (U/G)	1, 4	4	/	22, 23, 24, 25, 26, 28, 29, 30, 31 32 & 33	23, 25, 29, 27	/	8, 13 & 14	13	/

** Blanket Easement for Servicing and Drainage proposed over all Parts of each Severed Lands, in Favour of the other 2 Severed Lands



Kitchener/Waterloo Ph: 519-742-8371 Guelph Ph: 519-821-2763 Orangeville Ph: 519-940-4110

www.vanharten.com info@vanharten.com

DRAWN BY: JML CHECKED BY: BP PROJECT No: 27070-19
 Apr 2, 2024-11:44:20 AM
 G:\NAGARA FALLS\PL-41\ACAD\6663 STANLEY SEVERANCE SKETCH REV1.dwg