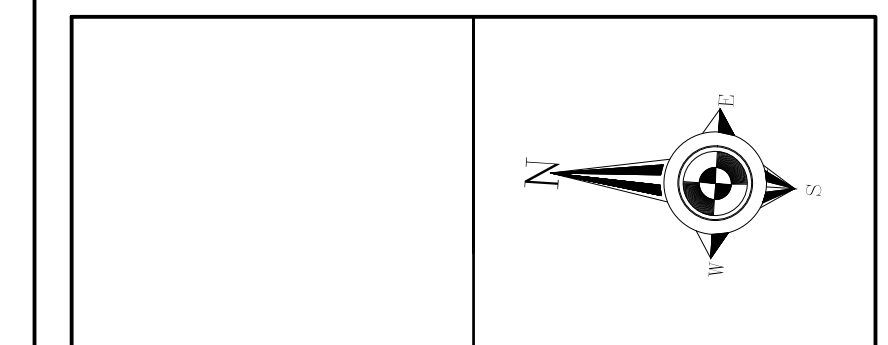


Contractor & trader must check and verify all dimensions before execute the work and must report discrepancies and should not scale or measure the drawings.
 All drawings, specifications and related documents are the copyright of the designer and must be returned upon request.
 All the work must be in compliance with ONTARIO BUILDING CODE.
 Reproduction of drawings, specifications and related documents in part or whole is forbidden without the written consent.
 This drawing is not to be used for construction until signed and stamped by the designer.



No.	Date	Version	Dwn.

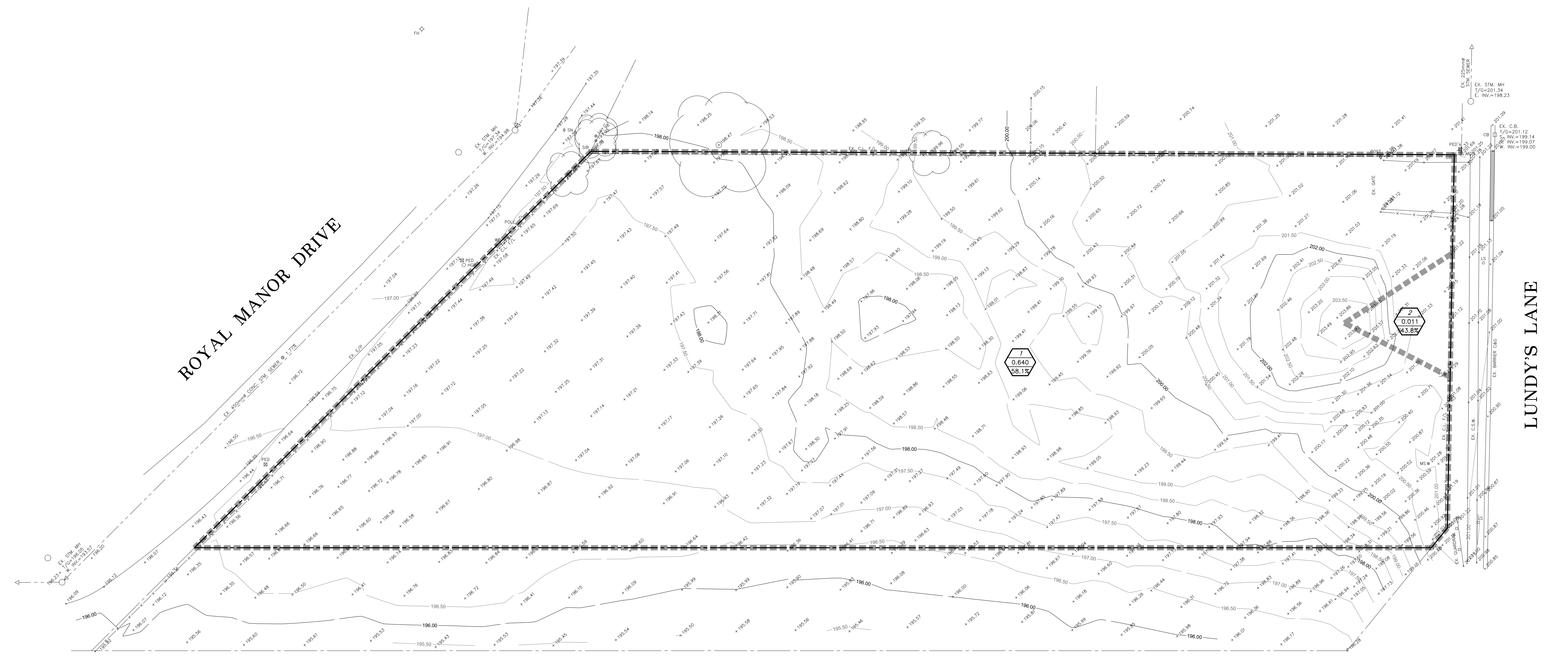
PROJECT:
PROPOSED MIXED USE DEVELOPMENT
 7301 Lundy's Lane
 City Of Niagara Falls
 Canada

DRAWING TITLE:
PRE DEVELOPMENT STORM DRAINAGE AREAS

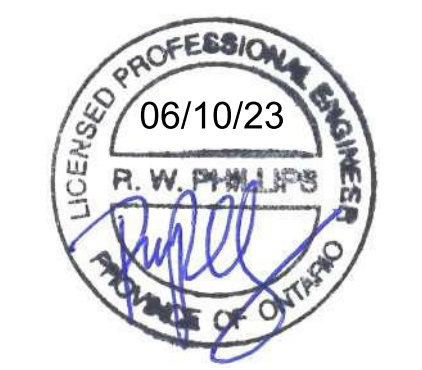
DRAWN BY: K.P.B. DATE: OCT. 5/23

CHECKED BY: R.W.P. SCALE: 1:250

PROJECT NO.:	DRAWING NO.:
16364	C-06



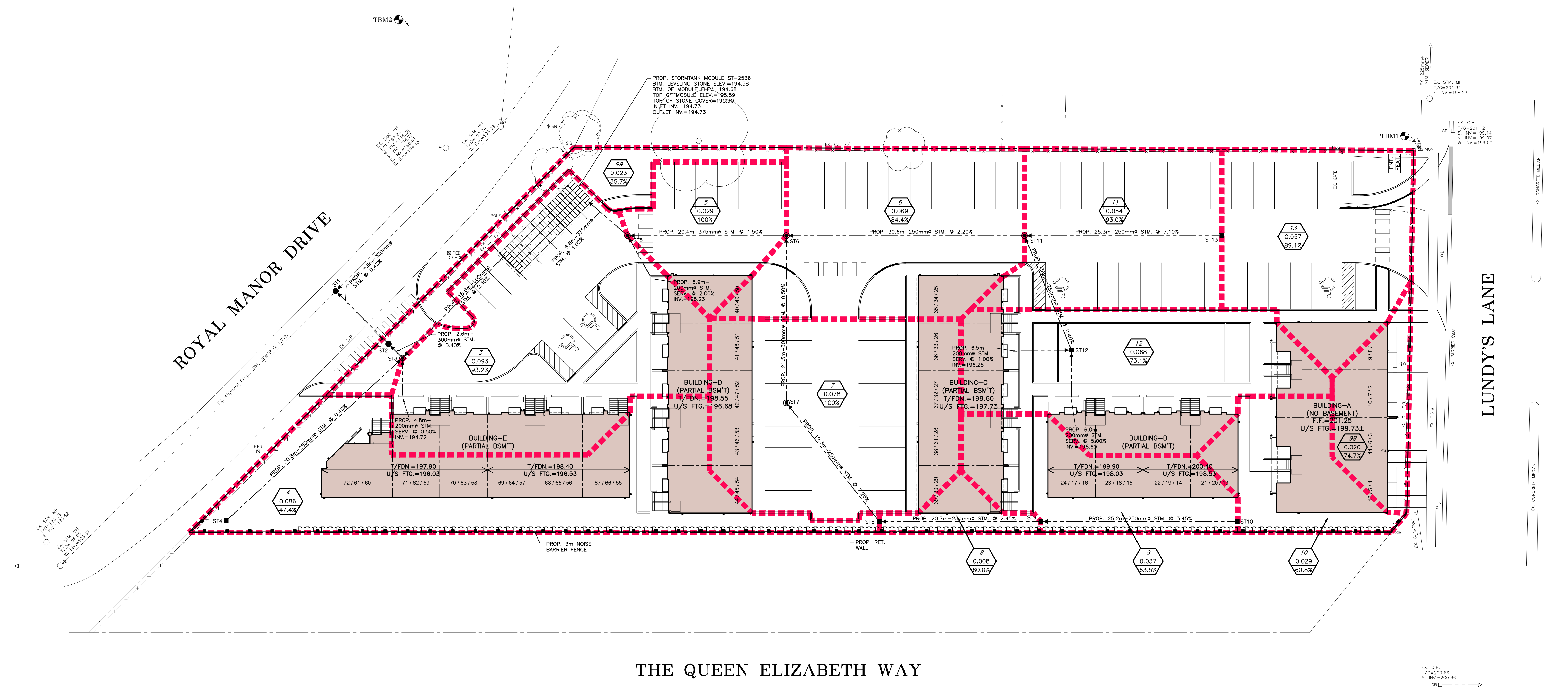
THE QUEEN ELIZABETH WAY



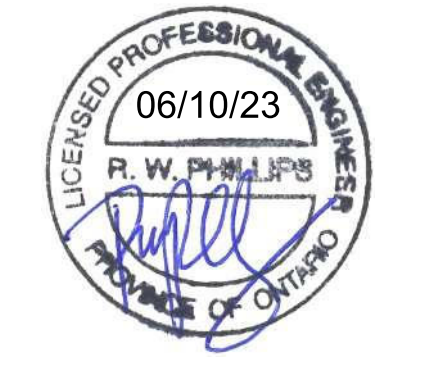
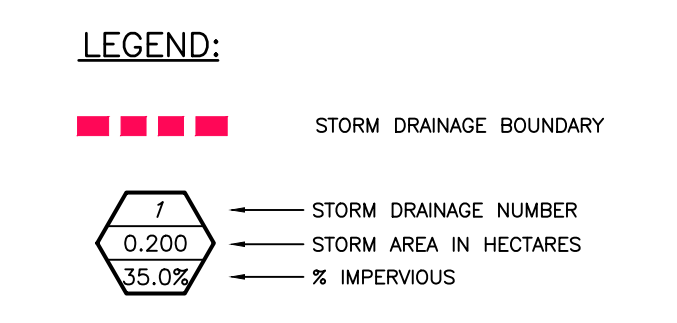
LEGEND:

- STORM DRAINAGE BOUNDARY
- 1 0.640 58.1% STORM DRAINAGE NUMBER
- 2 0.011 43.8% STORM AREA IN HECTARES
- IMPERVIOUS

Contractor & trader must check and verify all dimensions before executing the work and must report discrepancies and should not scale or measure the drawings.
 All drawings, specifications and related documents are the copyright of the designer and must be returned upon request.
 All the work must be in compliance with ONTARIO BUILDING CODE.
 Reproduction of drawings, specifications and related documents in part or whole is forbidden without the written consent.
 This drawing is not to be used for construction until signed and stamped by the designer.



THE QUEEN ELIZABETH WAY



No.	Date	Version	Dwn.

PROJECT:
PROPOSED MIXED USE DEVELOPMENT
 7301 Lundy's Lane
 City Of Niagara Falls
 Canada

DRAWING TITLE:
POST DEVELOPMENT STORM DRAINAGE AREAS

DRAWN BY: K.P.B. DATE: OCT. 5/23

CHECKED BY: R.W.P. SCALE: 1:250

PROJECT NO.:	DRAWING NO.:
16364	C-07

