



JACKSON ARBORICULTURE INC.

CONSULTING AND GIS ANALYSIS

118 Pleasant Ridge Road, Brantford ON, N3R 0B8

905-512-6303, jeremy@jacksonarbor.ca

Tree Inventory and Preservation Plan Report

Subject Property:

0 Pin Oak Drive
Niagara Falls, ON

Prepared For:

Penta Properties Inc.
4480 Paletta Court
Burlington ON, L7L 5R2

Prepared By:

Jackson Arboriculture Inc.
118 Pleasant Ridge Rd.
Brantford ON N3R 0B8

11 April 2022

Jackson Arboriculture Inc. Project No. 296



1.0 Introduction

Jackson Arboriculture Inc. was retained by Penta Properties Inc. to complete a Tree Inventory and Preservation Plan report for a property situated at 0 Pin Oak Drive in the City of Niagara Falls, Ontario, hereby referred to as the subject property. It is understood that a development application will be filed with the City for the construction of a residential subdivision.

2.0 Methodology

At the onset of the project the arboricultural scope of work was coordinated with the client and the consulting team. Prior to conducting a site visit, the topographic survey of the subject property and current aerial photography were overlaid utilizing geographic information software, for use on site during the completion of the tree inventory. The tree locations, the topographic survey and the site plan were overlaid and a tree preservation analysis was completed to determine the impacts to each tree included in the inventory.

2.1 Tree Inventory

A site visit was conducted on the 4th of April 2022 to complete the tree inventory. All trees 10 cm in diameter and larger outside of the PSWs situated on subject property, on neighbouring property within 5 m and within the road allowances were included in the tree inventory. A visual assessment was completed on each tree included in the inventory and the following information is provided in the tree inventory table (Table 1):

- **Tree #:** A number assigned to each tree correlating to the tree inventory and the Tree Preservation Plan (Sheet 1)
- **Species:** Common and scientific (Latin) species names.
- **DBH:** The trunk diameter at breast height, measured in centimeters at 1.4 m from the ground.
- **Condition:** The health of the tree considering the trunk integrity, the crown structure and the crown vigour; each rated as poor, fair or good. The condition ratings are based on the signs, symptoms and defects exhibited by each tree, considering the conditions in which it is growing.
- **Dripline:** The distance in meters from the stem to the tips of the live branches.
- **Location:** The property where the tree is situated.
- **Comments:** Any additional notes relevant to the tree's health or growing conditions.
- **Recommendation:** The recommended removal or preservation of each tree based on the impact assessment.

The trees included in the inventory are identified with numbers 1-213 and were located using a tablet computer with a GPS chip.

2.2 Impact Assessment

A tree preservation analysis was completed on each tree individually considering the impacts from the proposed development and many other factors including, but not limited to, tree condition, species, DBH and the existing site conditions. The impacts from the proposed development will occur where tree roots conflict with construction machinery during demolition, pre-grading, foundation excavation and servicing.

During the tree preservation analysis the dripline was utilized to determine the impacts to the trees included in the tree inventory. Where encroachment is required within the dripline tree removal may be required.

3.0 Existing Conditions

The subject property is currently occupied by a cultural meadow, provincially significant wetlands (PSW) and scattered tree resources. A drainage ditch traverses the western portion of subject property in a northeast to southwest direction. The property is bound by commercial development and PSW to the north, Pin Oak Drive to the east, PSW and woodland to the south and Kalar Road to the west.

4.0 Tree Inventory Results

The results of the tree inventory indicate that a total of 213 trees reside outside of the PSWs on subject property, within the road allowances and on neighbouring property within 5 m of the property boundaries. The trees included in the inventory appear to be comprised of naturally occurring trees and a few landscape plantings.

The trees included in the inventory are comprised of the following species:

- White Elm (*Ulmus americana*),
- Silver Maple (*Acer saccharinum*),
- Green Ash (*Fraxinus pennsylvanica*),
- Pear species (*Pyrus sp.*),
- Pin Oak (*Quercus palustris*),
- Bur Oak (*Quercus macrocarpa*),
- Apple species (*Malus sp.*),
- Black Cherry (*Prunus serotina*),
- Eastern Cottonwood (*Populus deltoides*),
- Swamp White Oak (*Quercus bicolor*),
- Black Locust (*Robinia pseudoacacia*),
- Red Oak (*Quercus rubra*),
- Willow species (*Salix sp.*),
- White Oak (*Quercus alba*),
- Trembling Aspen (*Populus tremuloides*),
- Sugar Maple (*Acer saccharum*),
- Basswood (*Tilia americana*),
- Shagbark Hickory (*Carya ovata*),
- Norway Spruce (*Picea abies*) and
- White Spruce (*Picea glauca*).

No rare, threatened or endangered tree species were documented in the tree inventory. Refer to Table 1 for the complete tree inventory and Sheet 1 for the tree locations.

5.0 Proposed Development

The proposed development includes the construction of a multi-block residential subdivision including residential housing blocks, a storm water management block, creek blocks and environmental protection blocks. Access to the subdivision is proposed from Kalar Road and Pin Oak Drive.

6.0 Discussion

The following sections outline the tree removal requirements, tree preservation opportunities based on the results of the impact analysis and tree protection recommendations.

6.1 Tree Removal

The removal of Trees 1, 3, 5-71, 76-100, 102-125, 127-147, 150-172, 174-176, 178, 184 and 187-211 will be required to accommodate the proposed development including grading.

6.2 Tree Preservation

The preservation of Trees 2, 4, 72-75, 101, 126, 148, 149, 173, 177, 179-183, 185, 186, 212 and 213 will be possible with the use of appropriate tree protection measures. Tree protection measures must be implemented prior to the commencement of pre-grading to ensure that the trees identified for preservation are not damaged by the proposed development activities.

Trees 146, 147, 157, 158, 160-163, 169, 170, 171, 172, 178 and 191-211 appear to reside fully or partially on neighbouring property. Permission from the respective property owner will be required prior to the removal of shared trees or neighbouring trees.

Encroachment within the tree protection zone of Trees 101 will be required to accommodate the proposed Street A. If any roots are exposed during construction they must be pruned by a Certified Arborist in accordance with good arboricultural practice to ensure that the root system is not damaged by construction.

Tree protection fence must be installed at the driplines of the trees identified for preservation unless noted otherwise in this report and on Sheet 1. Refer to Sheets 1 and 2 1 for the prescribed tree protection fence locations, the tree protection fence detail and additional tree preservation notes.

6.3 Tree Protection Recommendations

The following recommendations are made in attempts to reduce the impacts to trees identified for preservation:

- Tree protection fence must be installed at the dripline for trees identified for preservation prior to the commencement of pre-grading unless noted otherwise in this report and on Sheets 1 and 2.
- Once tree protection fence has been installed it must not be moved, relocated or altered in any way (unless repairing fallen fence etc.) for the duration of the construction period.
- No intrusion into an area identified on Sheet 1 as a tree preservation zone (TPZ) is allowed at anytime during construction.
- No storage of machinery, construction debris, materials, waste or any other items is allowed within a TPZ.
- Any tree branches and roots that conflict with proposed development must be pruned by a Certified Arborist in accordance with good arboricultural practice.
- Tree protection fencing should be inspected by a Certified Arborist prior to and during construction to ensure that the fencing remains intact and in good repair throughout the stages of development.

7.0 Summary

Jackson Arboriculture Inc. was retained by Penta Properties Inc. to complete a Tree Inventory and Preservation Plan report for a property situated at 0 Pin Oak Drive in the City of Niagara Falls. A tree inventory was conducted and an impact assessment was completed in the context of the proposed development plan.

The tree inventory documented a total of 213 situated on subject property, in the road allowances and on neighbouring property within 5 m of the property boundaries. The results of the impact assessment indicate that the removal of 192 trees included in the tree inventory will be required to accommodate the proposed development.

Respectfully submitted,
Jackson Arboriculture Inc.

Jeremy Jackson

Jeremy Jackson, H.B.Sc.,
ISA Certified Arborist #ON-1089A
GIS Analyst

Limitations of Assessment

It is our policy to attach the following limitations of assessment to ensure that the client, municipalities and agencies are fully aware of what is technically and professionally realistic when visually assessing and retaining trees.

The assessment of the trees presented in this report has been made using accepted arboricultural techniques. These include a visual examination of the above ground parts of each tree for structural defects, scars, external indications of decay such as fungal fruiting bodies, evidence of attack by insects, discoloured foliage, the condition of any visible root structures, the degree and direction of any lean, the general condition of the trees and the surrounding site, and the proximity of property and people.

Notwithstanding the recommendations and conclusions made in this report, it must be realized that trees are living organisms and their health and vigour constantly change. They are not immune to changes in site conditions, or seasonal variations in the weather conditions, including severe storms with high-speed winds.

While reasonable efforts have been made to ensure that the trees recommended for retention are healthy no guarantees are offered, or implied, that these trees, or any parts of them, will remain standing. It is both professionally and practically impossible to predict with absolute certainty the behaviour of any single tree or group of trees or their component parts in all circumstances. Inevitably a standing tree will always pose some risk. Most trees have the potential for failure under adverse weather conditions, and the risk can only be eliminated if the tree is removed.

Although every effort has been made to ensure that this assessment is reasonably accurate, trees should be re-assessed periodically. The assessment presented in this report is valid as the time of the inspection.

Table 1. Tree Inventory

Location: 0 Pin Oak Dr, Niagara Falls

Date: 4 April 2022 Surveyors: JJJ

Tree #	Common Name	Scientific Name	DBH	TI	CS	CV	DL	Location*	Comments	Recom.
1	White Elm	<i>Ulmus americana</i>	16	G	G	G	3	Subject property		Remove
2	Silver Maple	<i>Acer saccharinum</i>	12	G	G	G	3	Neighbouring		Preserve
3	Silver Maple	<i>Acer saccharinum</i>	30	FG	G	G	4	Subject property	Union at 1.6 m	Remove
4	Green Ash	<i>Fraxinus pennsylvanica</i>	11	G	G	G	2	Neighbouring		Preserve
5	Pear species	<i>Pyrus sp.</i>	30	FG	FG	G	3	Subject property	Union at 1.8 m	Remove
6	Pin Oak	<i>Quercus palustris</i>	34	G	G	G	5	Subject property		Remove
7	Bur Oak	<i>Quercus macrocarpa</i>	40	G	FG	FG	6	Subject property	Epicormic branching	Remove
8	Green Ash	<i>Fraxinus pennsylvanica</i>	28	P	P	P	4	Subject property	Peeling bark, epicormic branching, EAB infestation	Remove
9	Pear species	<i>Pyrus sp.</i>	19	G	G	G	4	Subject property		Remove
10	Green Ash	<i>Fraxinus pennsylvanica</i>	23	P	P	P	4	Subject property	Peeling bark, epicormic branching, 60% crown dieback, EAB infestation	Remove
11	Silver Maple	<i>Acer saccharinum</i>	26, 19, 8	FG	FG	G	4	Subject property	Union at 0.3 m	Remove
12	Pear species	<i>Pyrus sp.</i>	31	FG	G	G	4	Subject property	Union at 0.4 m	Remove
13	Pear species	<i>Pyrus sp.</i>	17, 12, 15	FG	FG	G	3	Subject property	Union at ground	Remove
14	Pear species	<i>Pyrus sp.</i>	24, 21	FG	G	G	4	Subject property	Union at ground	Remove
15	Pear species	<i>Pyrus sp.</i>	13	G	G	G	3	Subject property		Remove
16	Pear species	<i>Pyrus sp.</i>	24, 19, 13	FG	G	G	4	Subject property	Union at ground	Remove
17	Pear species	<i>Pyrus sp.</i>	20	G	G	G	3	Subject property		Remove
18	Pear species	<i>Pyrus sp.</i>	21	G	G	G	3	Subject property		Remove
19	Apple species	<i>Malus sp.</i>	16	G	G	G	4	Subject property		Remove
20	Apple species	<i>Malus sp.</i>	11, 11, 10, 11	FG	FG	G	3	Subject property	Unions at ground and 0.3 m	Remove
21	Black Cherry	<i>Prunus serotina</i>	10, 13, 12	F	PF	PF	3	Subject property	Union at ground with stem wounds, 12 cm stem dead, 30% crown dieback	Remove
22	Pear species	<i>Pyrus sp.</i>	14, 23, 12,	F	FG	G	5	Subject property	Unions at ground with included bark	Remove
23	Pear species	<i>Pyrus sp.</i>	10, 7, 8, 8, 9, 8	F	F	FG	4	Subject property	Unions at ground and 0.3 m, epicormic branching	Remove
24	Black Cherry	<i>Prunus serotina</i>	36	G	G	G	6	Subject property		Remove
25	Pear species	<i>Pyrus sp.</i>	23, 16	FG	FG	G	4	Subject property	Unions at ground and 1.5 m	Remove
26	Pear species	<i>Pyrus sp.</i>	16, 20	F	FG	G	3	Subject property	Unions at ground	Remove
27	Pear species	<i>Pyrus sp.</i>	21, 33, 24	FG	G	G	5	Subject property	Unions at ground and 0.3 m	Remove
28	Pear species	<i>Pyrus sp.</i>	23, 14	FG	FG	G	4	Subject property	Union at ground, epicormic branching	Remove
29	Pear species	<i>Pyrus sp.</i>	19	FG	G	G	4	Subject property	Union at 1.5 m	Remove
30	Silver Maple	<i>Acer saccharinum</i>	12, 15, 12, 9, 8	F	FG	G	3	Subject property	Unions at ground	Remove
31	Pear species	<i>Pyrus sp.</i>	13, 17	FG	FG	G	3	Subject property	Union at ground	Remove
32	Eastern Cottonwood	<i>Populus deltoides</i>	24, 25	F	FG	G	5	Subject property	Union at 0.3 m	Remove
33	Eastern Cottonwood	<i>Populus deltoides</i>	52	FG	FG	G	9	Subject property	Union at base of crown	Remove

Tree #	Common Name	Scientific Name	DBH	TI	CS	CV	DL	Location*	Comments	Recom.
34	Swamp White Oak	<i>Quercus bicolor</i>	10, 8, 22	FG	FG	FG	4	Subject property	Union at 0.2 m	Remove
35	Black Locust	<i>Robinia pseudoacacia</i>	16	G	G	G	3	Subject property		Remove
36	Black Locust	<i>Robinia pseudoacacia</i>	12	FG	G	G	3	Subject property	Union at 1.8 m	Remove
37	Black Locust	<i>Robinia pseudoacacia</i>	13	G	G	G	3	Subject property		Remove
38	Black Locust	<i>Robinia pseudoacacia</i>	11	F	G	G	3	Subject property	Sweep	Remove
39	Black Locust	<i>Robinia pseudoacacia</i>	11	F	G	G	3	Subject property	Sweep	Remove
40	Black Locust	<i>Robinia pseudoacacia</i>	15	G	G	G	3	Subject property		Remove
41	Black Locust	<i>Robinia pseudoacacia</i>	17	G	G	G	3	Subject property	Grapevine competition	Remove
42	Black Locust	<i>Robinia pseudoacacia</i>	13	FG	G	G	3	Subject property	Crook	Remove
43	Black Locust	<i>Robinia pseudoacacia</i>	19	G	G	G	4	Subject property		Remove
44	Black Locust	<i>Robinia pseudoacacia</i>	17, 17	F	FG	G	4	Subject property	Union at 1 m, light sweep	Remove
45	Black Locust	<i>Robinia pseudoacacia</i>	16	FG	G	G	3	Subject property	Union at 1.5 m	Remove
46	Black Locust	<i>Robinia pseudoacacia</i>	13	FG	G	G	3	Subject property	Union at base of crown	Remove
47	Black Locust	<i>Robinia pseudoacacia</i>	11	G	G	G	3	Subject property		Remove
48	Black Locust	<i>Robinia pseudoacacia</i>	13	G	G	G	3	Subject property		Remove
49	Black Locust	<i>Robinia pseudoacacia</i>	10	FG	G	G	3	Subject property	Union at base of crown	Remove
50	Black Locust	<i>Robinia pseudoacacia</i>	10	F	G	G	3	Subject property	Stem wound	Remove
51	Black Locust	<i>Robinia pseudoacacia</i>	24	G	G	G	5	Subject property		Remove
52	Black Locust	<i>Robinia pseudoacacia</i>	13, 13	FG	G	G	4	Subject property	Union at 0.2 m	Remove
53	Green Ash	<i>Fraxinus pennsylvanica</i>	20	P	P	P	4	Subject property	Peeling bark, epicormic branching, EAB infestation	Remove
54	Black Locust	<i>Robinia pseudoacacia</i>	18	FG	G	G	4	Subject property	Lean	Remove
55	Black Locust	<i>Robinia pseudoacacia</i>	17	FG	G	G	3	Subject property	Lean	Remove
56	Black Locust	<i>Robinia pseudoacacia</i>	17	FG	G	G	3	Subject property	Lean	Remove
57	Black Locust	<i>Robinia pseudoacacia</i>	17	G	G	G	3	Subject property		Remove
58	Black Locust	<i>Robinia pseudoacacia</i>	11	FG	G	G	3	Subject property	Lean	Remove
59	Black Locust	<i>Robinia pseudoacacia</i>	12	FG	G	G	3	Subject property	Lean	Remove
60	Black Locust	<i>Robinia pseudoacacia</i>	21	G	G	G	4	Subject property	Lean	Remove
61	Black Locust	<i>Robinia pseudoacacia</i>	21	F	G	G	4	Subject property	Crooks, stem wound	Remove
62	Black Locust	<i>Robinia pseudoacacia</i>	20	FG	G	G	4	Subject property	Sweep	Remove
63	Black Locust	<i>Robinia pseudoacacia</i>	14	FG	G	G	4	Subject property	Lean	Remove
64	Black Locust	<i>Robinia pseudoacacia</i>	13, 19	F	G	G	4	Subject property	Union at 0.3 m, sweep	Remove
65	Black Locust	<i>Robinia pseudoacacia</i>	15, 13	F	G	G	4	Subject property	Union at ground, lean	Remove
66	Black Locust	<i>Robinia pseudoacacia</i>	21	FG	G	G	4	Subject property	Union at base of crown	Remove

Tree #	Common Name	Scientific Name	DBH	TI	CS	CV	DL	Location*	Comments	Recom.
67	Black Locust	<i>Robinia pseudoacacia</i>	29, 19, 20	FG	G	G	5	Subject property	Union at ground with included bark	Remove
68	Black Locust	<i>Robinia pseudoacacia</i>	63	F	FG	FG	7	Subject property	Union at 1 m with included bark and seams	Remove
69	Black Locust	<i>Robinia pseudoacacia</i>	17, 14	F	F	FG	5	Subject property	Union at ground, lean, sweep	Remove
70	Silver Maple	<i>Acer saccharinum</i>	31, 31, 20	FG	FG	G	7	Subject property	Union at 0.3 m	Remove
71	Red Oak	<i>Quercus rubra</i>	27, 30, 30	FG	G	G	7	Subject property	Unions at ground and 1.3 m	Remove
72	Eastern Cottonwood	<i>Populus deltoides</i>	19	FG	G	G	3	Subject property	Swollen flare	Preserve
73	Eastern Cottonwood	<i>Populus deltoides</i>	~35	G	G	G	4	Subject property		Preserve
74	Willow species	<i>Salix sp.</i>	~13	F	FG	G	3	Subject property	Lean	Preserve
75	Willow species	<i>Salix sp.</i>	13, 13, 14, 10	F	F	F	3	Subject property	Unions at ground, broken branches, poor form	Preserve
76	Black Cherry	<i>Prunus serotina</i>	17	G	G	G	4	Subject property		Remove
77	Eastern Cottonwood	<i>Populus deltoides</i>	35	G	G	G	5	Subject property		Remove
78	Eastern Cottonwood	<i>Populus deltoides</i>	12	FG	G	G	3	Subject property	Understorey - light lean	Remove
79	Willow species	<i>Salix sp.</i>	15, 17	P	P	P	1	Subject property	Union at 0.3 m, 90% crown dieback	Remove
80	Bur Oak	<i>Quercus macrocarpa</i>	14, 9	FG	FG	G	3	Subject property	Union at 0.5 m	Remove
81	White Elm	<i>Ulmus americana</i>	12	G	G	G	3	Subject property		Remove
82	Eastern Cottonwood	<i>Populus deltoides</i>	11	FG	FG	G	3	Subject property	Lean west, understorey	Remove
83	Eastern Cottonwood	<i>Populus deltoides</i>	16	G	G	G	3	Subject property		Remove
84	Eastern Cottonwood	<i>Populus deltoides</i>	17	FG	FG	FG	3	Subject property	10% crown dieback, stem wound	Remove
85	Eastern Cottonwood	<i>Populus deltoides</i>	12	F	F	F	2	Subject property	Canker	Remove
86	Eastern Cottonwood	<i>Populus deltoides</i>	36, 25	FG	G	G	6	Subject property	Union at 0.5 m	Remove
87	Eastern Cottonwood	<i>Populus deltoides</i>	10	G	G	G	2	Subject property		Remove
88	White Elm	<i>Ulmus americana</i>	11	G	G	G	2	Subject property		Remove
89	Green Ash	<i>Fraxinus pennsylvanica</i>	11	F	F	F	2	Subject property	EAB infestation	Remove
90	Silver Maple	<i>Acer saccharinum</i>	32, 23, 17, 11, 10, 13, 11	F	FG	G	7	Subject property	Union at ground	Remove
91	Silver Maple	<i>Acer saccharinum</i>	20	G	G	G	5	Subject property		Remove
92	Eastern Cottonwood	<i>Populus deltoides</i>	35, 29	FG	G	G	5	Subject property	Union at 0.3 m	Remove
93	Willow species	<i>Salix sp.</i>	25	F	PF	PF	1	Subject property	Growth deficit at flare, top of crown dead	Remove
94	Green Ash	<i>Fraxinus pennsylvanica</i>	21	P	P	P	5	Subject property	Peeling bark, EAB infestation	Remove
95	Apple sp	<i>Malus sp.</i>	13, 14, 15, 23	F	F	FG	4	Subject property	Unions at ground, epicormic branching	Remove
96	Apple sp	<i>Malus sp.</i>	12, 12, 8	F	FG	FG	3	Subject property	Unions at ground and 1 m, epicormic branching, lean southeast	Remove
97	Green Ash	<i>Fraxinus pennsylvanica</i>	16	P	P	P	3	Subject property	Epicormic branching, EAB infestation	Remove
98	Green Ash	<i>Fraxinus pennsylvanica</i>	11	P	P	P	2	Subject property	Stem wounds, peeling bark, EAB infestation	Remove
99	White Elm	<i>Ulmus americana</i>	10	G	G	G	3	Subject property		Remove

Tree #	Common Name	Scientific Name	DBH	TI	CS	CV	DL	Location*	Comments	Recom.
100	Green Ash	<i>Fraxinus pennsylvanica</i>	18	P	P	P	4	Subject property	Union at 1.5 m, EAB infestation	Remove
101	White Oak	<i>Quercus alba</i>	31	G	G	G	5	Subject property		Preserve
102	Red Oak	<i>Quercus rubra</i>	18, 18	F	FG	G	4	Subject property	Union at ground with included bark	Remove
103	Red Oak	<i>Quercus rubra</i>	15	G	G	G	4	Subject property		Remove
104	Red Oak	<i>Quercus rubra</i>	83, 11, 17, 9	F	FG	G	11	Subject property	Unions at ground and 1.5 m	Remove
105	White Elm	<i>Ulmus americana</i>	14	G	G	G	3	Subject property		Remove
106	Trembling Aspen	<i>Populus tremuloides</i>	16	FG	FG	FG	3	Subject property	Sweep, crook	Remove
107	Trembling Aspen	<i>Populus tremuloides</i>	29	G	G	G	4	Subject property		Remove
108	Green Ash	<i>Fraxinus pennsylvanica</i>	13	P	P	P	2	Subject property	Epicormic branching, stem wounds, EAB infestation	Remove
109	Trembling Aspen	<i>Populus tremuloides</i>	18	G	G	G	3	Subject property		Remove
110	Trembling Aspen	<i>Populus tremuloides</i>	19	G	G	G	4	Subject property		Remove
111	White Elm	<i>Ulmus americana</i>	21	G	G	G	4	Subject property		Remove
112	Trembling Aspen	<i>Populus tremuloides</i>	20	P	P	P	2	Subject property	Canker, 50% crown dieback	Remove
113	White Elm	<i>Ulmus americana</i>	11	G	G	G	3	Subject property		Remove
114	Red Oak	<i>Quercus rubra</i>	60,22	G	G	G	10	Subject property	Union at 1 m with included bark	Remove
115	White Elm	<i>Ulmus americana</i>	12	F	F	FG	4	Subject property	Bowed east - understorey	Remove
116	Red Oak	<i>Quercus rubra</i>	22	F	G	G	4	Subject property	Stem wound at flare with heart rot	Remove
117	Red Oak	<i>Quercus rubra</i>	33	F	G	G	8	Subject property	Cavity at flare with heart rot	Remove
118	Sugar Maple	<i>Acer saccharum</i>	7, 11, 21	F	F	G	4	Subject property	Unions at ground and 0.5 m, diseased	Remove
119	Pin Oak	<i>Quercus palustris</i>	17	F	P	P	1	Subject property	Poor form, 50% crown dieback	Remove
120	Basswood	<i>Tilia americana</i>	17	F	F	F	4	Subject property	Bowed west, understorey	Remove
121	Red Oak	<i>Quercus rubra</i>	30	G	G	G	6	Subject property	Branch galls	Remove
122	Pear species	<i>Pyrus sp.</i>	14	PF	FG	FG	2	Subject property	Union at 1.8 m, heavy sweep	Remove
123	Red Oak	<i>Quercus rubra</i>	10	G	G	G	3	Subject property		Remove
124	Bur Oak	<i>Quercus macrocarpa</i>	12	G	G	G	2	Subject property		Remove
125	Green Ash	<i>Fraxinus pennsylvanica</i>	12	P	P	P	3	Subject property	Peeling bark, 90% crown dieback, EAB infestation	Remove
126	Pin Oak	<i>Quercus palustris</i>	39	G	G	G	5	Subject property		Preserve
127	Red Oak	<i>Quercus rubra</i>	14	FG	F	F	3	Subject property	Top of crown dead - 20% crown dieback, understorey	Remove
128	Pear species	<i>Pyrus sp.</i>	24, 18	F	F	F	3	Subject property	Union at 1.1 m, epicormic branching, understorey	Remove
129	Shagbark Hickory	<i>Carya ovata</i>	21	G	FG	G	4	Subject property	Understorey	Remove
130	Basswood	<i>Tilia americana</i>	13	FG	FG	G	4	Subject property	Bowed east, understorey	Remove
131	Black Cherry	<i>Prunus serotina</i>	12	F	F	F	4	Subject property	Sweep, bowed east	Remove
132	Shagbark Hickory	<i>Carya ovata</i>	31	G	G	G	4	Subject property		Remove
133	White Elm	<i>Ulmus americana</i>	13	G	G	G	2	Subject property		Remove
134	White Elm	<i>Ulmus americana</i>	11	G	G	G	3	Subject property		Remove
135	White Elm	<i>Ulmus americana</i>	16	G	G	G	3	Subject property		Remove
136	White Elm	<i>Ulmus americana</i>	22	G	G	G	4	Subject property		Remove

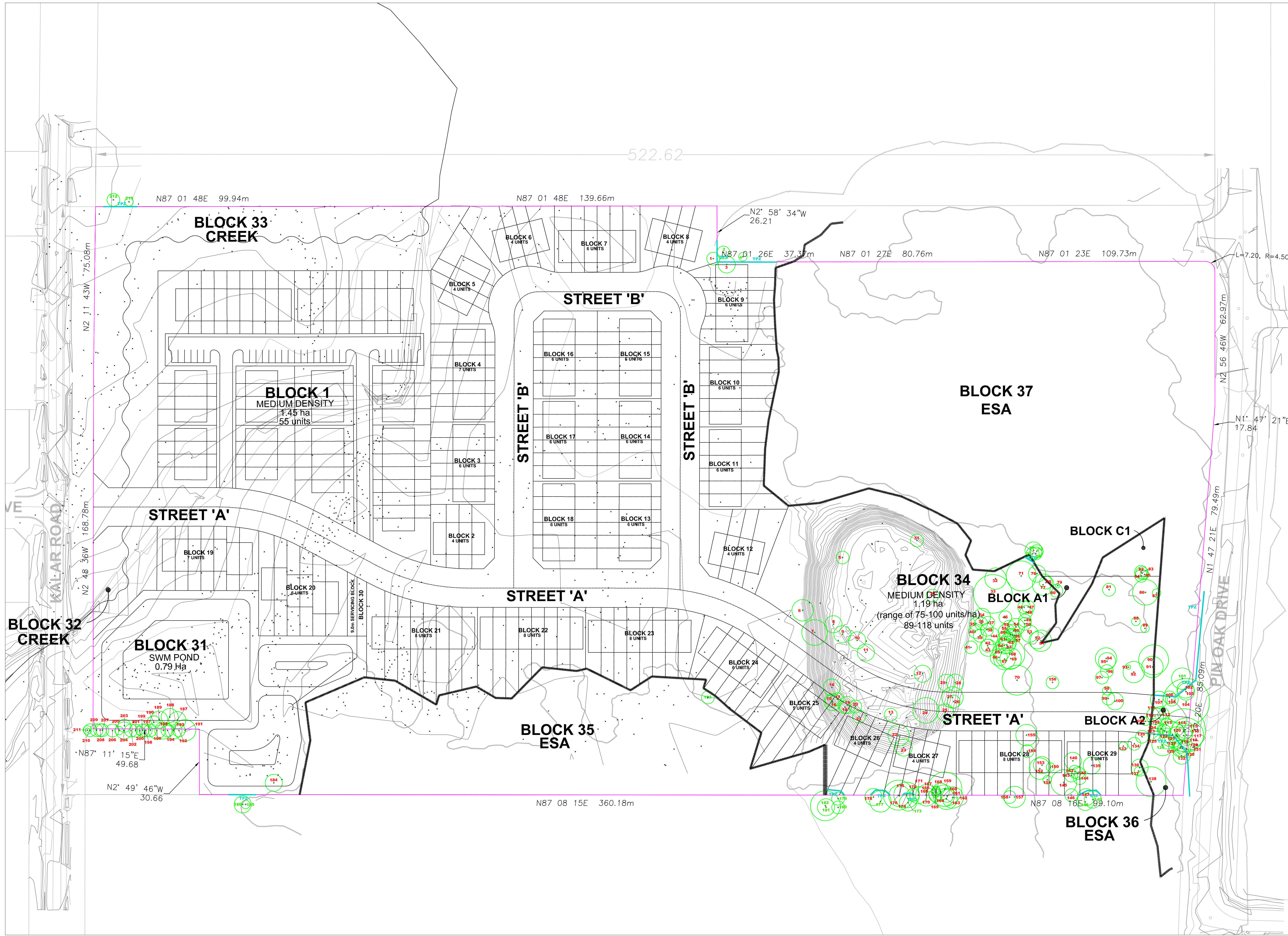
Tree #	Common Name	Scientific Name	DBH	TI	CS	CV	DL	Location*	Comments	Recom.
137	Green Ash	<i>Fraxinus pennsylvanica</i>	14	P	P	P	2	Subject property	90% crown dieback, epicormic branching, peeling bark, EAB infestation	Remove
138	Pin Oak	<i>Quercus palustris</i>	36	G	G	G	7	Subject property		Remove
139	Green Ash	<i>Fraxinus pennsylvanica</i>	16	P	P	P	4	Subject property	Peeling bark, EAB infestation	Remove
140	Apple species	<i>Malus sp.</i>	21	F	FG	G	4	Subject property	Lean east	Remove
141	Pear species	<i>Pyrus sp.</i>	20	G	G	G	3	Subject property		Remove
142	Green Ash	<i>Fraxinus pennsylvanica</i>	19	P	P	P	3	Subject property	Peeling bark, EAB infestation	Remove
143	Pear species	<i>Pyrus sp.</i>	22	FG	FG	FG	3	Subject property	Epicormic branching	Remove
144	Pear species	<i>Pyrus sp.</i>	16	G	G	G	3	Subject property		Remove
145	White Oak	<i>Quercus alba</i>	36	G	G	G	6	Subject property		Remove
146	White Elm	<i>Ulmus americana</i>	12	G	G	G	3	Boundary		Remove
147	Pin Oak	<i>Quercus palustris</i>	24	G	G	G	4	Neighbouring	Branch galls	Remove
148	Pin Oak	<i>Quercus palustris</i>	15	G	G	G	4	Neighbouring		Preserve
149	Pin Oak	<i>Quercus palustris</i>	19	G	G	G	4	Neighbouring		Preserve
150	Pear species	<i>Pyrus sp.</i>	13	F	FG	G	2	Subject property	Crook	Remove
151	Pear species	<i>Pyrus sp.</i>	14	PF	F	F	2	Subject property	Heavy lean east	Remove
152	Red Oak	<i>Quercus rubra</i>	27	G	G	G	5	Subject property		Remove
153	Pin Oak	<i>Quercus palustris</i>	33	G	G	G	4	Subject property		Remove
154	Swamp White Oak	<i>Quercus bicolor</i>	19, 10	FG	G	G	3	Subject property	Union at 0.5 m	Remove
155	Pin Oak	<i>Quercus palustris</i>	35	G	G	G	5	Subject property		Remove
156	Pear species	<i>Pyrus sp.</i>	24, 20	FG	FG	G	3	Subject property	Union at 1.6 m	Remove
157	Eastern Cottonwood	<i>Populus deltoides</i>	33	G	G	G	5	Neighbouring		Remove
158	Green Ash	<i>Fraxinus pennsylvanica</i>	20	P	P	P	3	Neighbouring	Peeling bark, epicormic branching, EAB infestation	Remove
159	Eastern Cottonwood	<i>Populus deltoides</i>	62	G	G	G	8	Subject property		Remove
160	Bur Oak	<i>Quercus macrocarpa</i>	36, 20	PF	PF	PF	5	Boundary	Union at 0.3 m, heavy stem wound with heart rot, top of crown missing	Remove
161	Pin Oak	<i>Quercus palustris</i>	10, 14	FG	FG	G	3	Boundary	Union at ground	Remove
162	Pin Oak	<i>Quercus palustris</i>	25	G	G	G	5	Neighbouring		Remove
163	Pin Oak	<i>Quercus palustris</i>	31	F	FG	G	5	Neighbouring	Union in crown	Remove
164	Pin Oak	<i>Quercus palustris</i>	10	G	G	G	4	Subject property	Oak branch gall	Remove
165	Shagbark Hickory	<i>Carya ovata</i>	13	G	G	G	2	Subject property		Remove
166	Shagbark Hickory	<i>Carya ovata</i>	12	G	G	G	2	Subject property		Remove
167	Shagbark Hickory	<i>Carya ovata</i>	14	G	G	G	2	Subject property		Remove
168	Shagbark Hickory	<i>Carya ovata</i>	10	G	G	G	2	Subject property		Remove
169	Shagbark Hickory	<i>Carya ovata</i>	16	G	G	G	3	Boundary		Remove
170	Shagbark Hickory	<i>Carya ovata</i>	22	G	G	G	5	Boundary		Remove
171	Pear species	<i>Pyrus sp.</i>	24	FG	FG	G	4	Boundary	Union at 2.2 m, spiral grain	Remove
172	Shagbark Hickory	<i>Carya ovata</i>	13	G	G	G	3	Boundary		Remove
173	Shagbark Hickory	<i>Carya ovata</i>	22	G	G	G	4	Neighbouring		Preserve

Tree #	Common Name	Scientific Name	DBH	TI	CS	CV	DL	Location*	Comments	Recom.
174	Shagbark Hickory	<i>Carya ovata</i>	35	G	G	G	6	Boundary		Remove
175	Bur Oak	<i>Quercus macrocarpa</i>	41	G	G	G	5	Boundary		Remove
176	Red Oak	<i>Quercus rubra</i>	24, 30, 24	F	F	FG	7	Boundary	Union at ground with 1 failed stem, 1 stem bowed north	Remove
177	Shagbark Hickory	<i>Carya ovata</i>	29	G	G	G	5	Neighbouring		Preserve
178	Pin Oak	<i>Quercus palustris</i>	17	G	G	G	4	Neighbouring	Branch gall	Remove
179	Green Ash	<i>Fraxinus pennsylvanica</i>	12	P	P	P	3	Neighbouring	EAB infestation	Preserve
180	Swamp White Oak	<i>Quercus bicolor</i>	15	G	G	G	3	Neighbouring		Preserve
181	Shagbark Hickory	<i>Carya ovata</i>	21	FG	G	G	4	Neighbouring	Girdling roots from adjacent tree	Preserve
182	Pin Oak	<i>Quercus palustris</i>	46	G	G	G	7	Neighbouring		Preserve
183	Willow species	<i>Salix sp.</i>	13, 12, 15	F	FG	G	3	Subject property	Union at 0.3 m, woody debris piled in rootzone against trunk	Preserve
184	Norway Spruce	<i>Picea abies</i>	28	G	G	G	4	Subject property		Remove
185	White Elm	<i>Ulmus americana</i>	16	G	G	G	2	Neighbouring		Preserve
186	White Elm	<i>Ulmus americana</i>	29, 22, 14	F	FG	G	4	Neighbouring	Unions at 0.4 and 1.3 m	Preserve
187	White Spruce	<i>Picea glauca</i>	24	G	G	G	4	Neighbouring		Remove
188	White Spruce	<i>Picea glauca</i>	20	G	G	G	4	Neighbouring		Remove
189	White Spruce	<i>Picea glauca</i>	29	G	G	G	4	Neighbouring		Remove
190	White Spruce	<i>Picea glauca</i>	22	G	FG	G	3	Neighbouring	Crook	Remove
191	White Spruce	<i>Picea glauca</i>	35	G	G	G	5	Subject property		Remove
192	Norway Spruce	<i>Picea abies</i>	17	G	FG	G	3	Subject property	Union in crown	Remove
193	Norway Spruce	<i>Picea abies</i>	22	G	FG	G	4	Subject property	Union in crown	Remove
194	Norway Spruce	<i>Picea abies</i>	18	G	G	G	3	Subject property		Remove
195	Norway Spruce	<i>Picea abies</i>	26	G	FG	G	4	Subject property	Vertical scaffold limbs	Remove
196	Norway Spruce	<i>Picea abies</i>	22	G	F	G	4	Subject property	Union in crown	Remove
197	Norway Spruce	<i>Picea abies</i>	31	G	F	FG	3	Subject property	Union in crown	Remove
198	Norway Spruce	<i>Picea abies</i>	18	G	FG	G	3	Subject property	Vertical scaffold limbs	Remove
199	Norway Spruce	<i>Picea abies</i>	18	G	F	FG	3	Subject property	Union in crown	Remove
200	Norway Spruce	<i>Picea abies</i>	12	G	FG	FG	2	Subject property	Small crown - shading	Remove
201	Norway Spruce	<i>Picea abies</i>	25	G	FG	G	3	Subject property	Vertical scaffold limbs	Remove
202	Norway Spruce	<i>Picea abies</i>	22	G	G	G	3	Subject property		Remove
203	Green Ash	<i>Fraxinus pennsylvanica</i>	10	G	G	G	3	Neighbouring		Remove
204	Norway Spruce	<i>Picea abies</i>	24	G	F	G	4	Subject property	Union in crown	Remove
205	White Spruce	<i>Picea glauca</i>	15	G	G	G	2	Subject property		Remove
206	Norway Spruce	<i>Picea abies</i>	22	G	G	G	3	Subject property		Remove
207	Norway Spruce	<i>Picea abies</i>	24	G	G	G	3	Subject property		Remove
208	White Spruce	<i>Picea glauca</i>	17	FG	G	G	3	Subject property	Rope girdling stem	Remove
209	Norway Spruce	<i>Picea abies</i>	18	G	G	G	3	Subject property		Remove
210	Norway Spruce	<i>Picea abies</i>	18	G	G	G	3	Subject property		Remove
211	Norway Spruce	<i>Picea abies</i>	18	G	F	F	2	Subject property	20% crown dieback	Remove
212	White Spruce	<i>Picea glauca</i>	12	F	G	G	2	Neighbouring	Guy wire girdling stem	Preserve
213	Pin Oak	<i>Quercus palustris</i>	28	G	G	G	3	Neighbouring		Preserve

*Based on GPS points taken on site.

Table Legend

DBH	Diameter at Breast Height (cm)
TI	Trunk Integrity (G, F, P)
CS	Crown Structure (G, F, P)
CV	Crown Vigor (G, F, P)
DL	Dripline (m)
Recom.	Recommendation (preserve/remove)
G	Good
F	Fair
P	Poor
EAB	Emerald Ash Borer infestation
~	Estimate



LEGEND

- GPS Tree Location
- 73 Tree Number Identified for Preservation (GREEN)
- 6 Tree Number Identified for Removal (RED)
- TPZ Tree Protection Zone Symbol
- Dripline
- Property Boundary
- Tree Protection Fence

Tree Inventory
 All trees 10 cm in diameter and larger situated outside of PSWs on subject property, in the road allowance and on neighbouring property within 5 m were included in the tree inventory. Refer to Table 1 for the complete tree inventory information.

Tree Preservation Recommendations
 The following recommendations are made in attempts to reduce the impacts to trees identified for preservation:

- Tree protection fence must be installed at the dripline for trees identified for preservation prior to the commencement of pre-grading unless noted otherwise in this report and on Sheets 1 and 2.
- Once tree protection fence has been installed it must not be moved, relocated or altered in any way (unless repairing fallen fence etc.) for the duration of the construction period.
- No intrusion into an area identified on Sheet 1 as a tree preservation zone (TPZ) is allowed at anytime during construction.
- No storage of machinery, construction debris, materials, waste or any other items is allowed within a TPZ.
- Any tree branches and roots that conflict with proposed development must be pruned by a Certified Arborist in accordance with good arboricultural practice.
- Tree protection fencing should be inspected by a Certified Arborist prior to and during construction to ensure that the fencing remains intact and in good repair throughout the stages of development.

No.	Date	Description	By
1	11 April 2022	Report Submission	JL

Date Source: Metropollen Consulting Inc.
JACKSON ARBORCULTURE INC.
 118 Pinewood Village Road
 Bradford ON N7S 1B8
 905.424.6883
 jerry@jacksonarbor.com

0 Pin Oak Drive
 Niagara Falls, ON

Penta Properties Inc.
 4480 Paletta Court
 Burlington, ON L7P 5R2

Tree Preservation Plan

Project #	P296	Sheet #	1
Date	11 April 2022		
Scale	1:750		

Tree #	Common Name	Scientific Name	DBH	TI	CS	CV	DL	Location*	Comments	Recom.
1	White Elm	Ulmus americana	16	G	G	G	3	Subject property		Remove
2	Silver Maple	Acer saccharinum	12	G	G	G	3	Neighbouring		Preserve
3	Silver Maple	Acer saccharinum	30	FG	G	G	4	Subject property		Remove
4	Green Ash	Fraxinus pennsylvanica	11	G	G	2		Neighbouring		Preserve
5	Rear species	Pinus sp.	30	FG	FG	G	3	Subject property	Union at 1.6 m	Remove
6	Pin Oak	Quercus palustris	34	G	G	G	5	Subject property		Remove
7	Pin Oak	Quercus palustris	46	G	FG	FG	6	Subject property	Epicormic branching	Remove
8	Green Ash	Fraxinus pennsylvanica	28	P	P	F	4	Subject property	Peeling bark, epicormic branching, EAB infestation	Remove
9	Rear species	Pinus sp.	19	G	G	4	Subject property			Remove
10	Green Ash	Fraxinus pennsylvanica	23	P	P	P	4	Subject property	Peeling bark, epicormic branching, 60% crown deckback, EAB infestation	Remove
11	Silver Maple	Acer saccharinum	26, 19, 8	FG	FG	G	4	Subject property	Union at 0.3 m	Remove
12	Rear species	Pinus sp.	31	FG	G	G	4	Subject property	Union at 0.4 m	Remove
13	Rear species	Pinus sp.	17, 12, 15	FG	FG	G	3	Subject property	Union at ground	Remove
14	Rear species	Pinus sp.	24, 21	FG	G	G	4	Subject property	Union at ground	Remove
15	Rear species	Pinus sp.	13	G	G	G	3	Subject property		Remove
16	Rear species	Pinus sp.	24, 19, 13	FG	G	G	4	Subject property	Union at ground	Remove
17	Rear species	Pinus sp.	20	G	G	G	3	Subject property		Remove
18	Rear species	Pinus sp.	21	G	G	G	3	Subject property		Remove
19	Apple species	Malus sp.	16	G	G	G	4	Subject property		Remove
20	Apple species	Malus sp.	11, 11, 10, 11	FG	FG	G	3	Subject property	Unions at ground and 0.3 m	Remove
21	Black Cherry	Prunus serotina	10, 13, 12	F	PF	PF	3	Subject property	Union at ground with stem wounds, 12 cm stem dead, 30% crown deckback	Remove
22	Rear species	Pinus sp.	14, 23, 12, 12	F	FG	G	5	Subject property	Unions at ground with included bark	Remove
23	Rear species	Pinus sp.	10, 7, 8, 9, 8	F	FG	G	4	Subject property	Unions at ground and 0.3 m, epicormic branching	Remove
24	Black Cherry	Prunus serotina	36	G	G	G	6	Subject property		Remove
25	Rear species	Pinus sp.	23, 16	FG	FG	G	4	Subject property	Unions at ground and 1.5 m	Remove
26	Rear species	Pinus sp.	16, 20	F	FG	G	3	Subject property	Union at ground	Remove
27	Rear species	Pinus sp.	21, 33, 24	FG	G	G	5	Subject property	Unions at ground and 0.3 m	Remove
28	Rear species	Pinus sp.	23, 14	FG	FG	G	4	Subject property	Union at ground, epicormic branching	Remove
29	Rear species	Pinus sp.	19	FG	G	G	4	Subject property	Union at 1.5 m	Remove
30	Silver Maple	Acer saccharinum	12, 15, 12, 9	F	FG	G	3	Subject property	Unions at ground	Remove
31	Rear species	Pinus sp.	13, 17	FG	FG	G	3	Subject property	Union at ground	Remove
32	Eastern Cottonwood	Populus deltoides	24, 26	F	FG	G	5	Subject property	Union at 0.3 m	Remove
33	Eastern Cottonwood	Populus deltoides	52	FG	FG	G	9	Subject property	Union at base of crown	Remove
34	Swamp White Oak	Quercus bicolor	10, 8, 22	FG	FG	FG	4	Subject property	Union at 0.2 m	Remove
35	Black Locust	Robinia pseudacacia	16	G	G	G	3	Subject property		Remove
36	Black Locust	Robinia pseudacacia	12	FG	G	G	3	Subject property	Union at 1.8 m	Remove
37	Black Locust	Robinia pseudacacia	13	G	G	G	3	Subject property		Remove
38	Black Locust	Robinia pseudacacia	11	F	G	G	3	Subject property	SwEEP	Remove
39	Black Locust	Robinia pseudacacia	11	F	G	G	3	Subject property	SwEEP	Remove
40	Black Locust	Robinia pseudacacia	15	G	G	G	3	Subject property		Remove
41	Black Locust	Robinia pseudacacia	17	G	G	G	3	Subject property	Grapevine competition	Remove
42	Black Locust	Robinia pseudacacia	13	FG	G	G	3	Subject property	Crook	Remove
43	Black Locust	Robinia pseudacacia	19	G	G	G	4	Subject property		Remove
44	Black Locust	Robinia pseudacacia	17, 17	FG	G	G	4	Subject property	Union at 1 m, light swEEP	Remove
45	Black Locust	Robinia pseudacacia	16	FG	G	G	3	Subject property		Remove
46	Black Locust	Robinia pseudacacia	13	FG	G	G	3	Subject property	Union at base of crown	Remove
47	Black Locust	Robinia pseudacacia	11	G	G	G	3	Subject property		Remove
48	Black Locust	Robinia pseudacacia	13	G	G	G	3	Subject property		Remove
49	Black Locust	Robinia pseudacacia	19	FG	G	G	3	Subject property	Union at base of crown	Remove
50	Black Locust	Robinia pseudacacia	10	F	G	G	3	Subject property	Stem wound	Remove
51	Black Locust	Robinia pseudacacia	24	G	G	G	5	Subject property		Remove
52	Black Locust	Robinia pseudacacia	13, 13	FG	G	G	4	Subject property	Union at 0.2 m	Remove
53	Green Ash	Fraxinus pennsylvanica	20	P	P	F	4	Subject property	Peeling bark, epicormic branching, EAB infestation	Remove
54	Black Locust	Robinia pseudacacia	18	FG	G	G	4	Subject property	Lean	Remove
55	Black Locust	Robinia pseudacacia	17	FG	G	G	3	Subject property	Lean	Remove
56	Black Locust	Robinia pseudacacia	17	FG	G	G	3	Subject property	Lean	Remove
57	Black Locust	Robinia pseudacacia	17	G	G	G	3	Subject property	Lean	Remove
58	Black Locust	Robinia pseudacacia	11	FG	G	G	3	Subject property	Lean	Remove
59	Black Locust	Robinia pseudacacia	12	FG	G	G	3	Subject property	Lean	Remove
60	Black Locust	Robinia pseudacacia	21	G	G	G	4	Subject property	Lean	Remove
61	Black Locust	Robinia pseudacacia	19, 13	F	G	G	4	Subject property	Union at ground, lean	Remove
62	Black Locust	Robinia pseudacacia	21	FG	G	G	4	Subject property	Union at base of crown	Remove
63	Black Locust	Robinia pseudacacia	20	FG	G	G	4	Subject property	SwEEP	Remove
64	Black Locust	Robinia pseudacacia	14	FG	G	G	4	Subject property	Lean	Remove
65	Black Locust	Robinia pseudacacia	13, 19	F	G	G	4	Subject property	Lean	Remove
66	Black Locust	Robinia pseudacacia	13, 19	F	G	G	4	Subject property	Lean	Remove
67	Black Locust	Robinia pseudacacia	29, 19, 20	FG	G	G	5	Subject property	Union at ground with included bark	Remove
68	Black Locust	Robinia pseudacacia	63	F	FG	FG	7	Subject property	Union at 1 m w/ th included bark and seams	Remove
69	Black Locust	Robinia pseudacacia	17, 14	F	FG	FG	5	Subject property		Remove
70	Silver Maple	Acer saccharinum	31, 31, 20	FG	FG	G	7	Subject property	Union 0.3 m	Remove
71	Red Oak	Quercus rubra	27, 30, 30	FG	G	G	7	Subject property	Unions at ground and 1.3 m	Remove
72	Eastern Cottonwood	Populus deltoides	19	FG	G	G	3	Subject property	SwEEP	Remove
73	Eastern Cottonwood	Populus deltoides	-36	G	G	G	4	Subject property		Remove
74	Willow species	Salix sp.	-13	F	FG	G	3	Subject property	Lean	Remove
75	Willow species	Salix sp.	13, 13, 14	F	F	F	3	Subject property	Unions at ground, broken branches, poor form	Remove
76	Black Cherry	Prunus serotina	17	G	G	G	4	Subject property		Remove
77	Eastern Cottonwood	Populus deltoides	35	G	G	G	5	Subject property		Remove
78	Eastern Cottonwood	Populus deltoides	12	FG	G	G	3	Subject property	Understorey - light lean	Remove
79	Willow species	Salix sp.	16, 17	P	P	P	1	Subject property	Union at 0.3 m, 90% crown deckback	Remove
80	Pin Oak	Quercus palustris	14, 9	FG	FG	G	3	Subject property	Union at 0.5 m	Remove
81	White Elm	Ulmus americana	12	G	G	G	3	Subject property		Remove
82	Eastern Cottonwood	Populus deltoides	11	FG	FG	G	3	Subject property	Lean w/ east, understorey	Remove
83	Eastern Cottonwood	Populus deltoides	16	G	G	G	3	Subject property		Remove
84	Eastern Cottonwood	Populus deltoides	17	FG	FG	G	3	Subject property	10% crown deckback, stem wound	Remove
85	Eastern Cottonwood	Populus deltoides	12	F	F	F	2	Subject property	Canker	Remove
86	Eastern Cottonwood	Populus deltoides	36, 26	FG	G	G	6	Subject property	Union at 0.5 m	Remove
87	Eastern Cottonwood	Populus deltoides	10	G	G	G	2	Subject property		Remove
88	White Elm	Ulmus americana	11	G	G	G	2	Subject property		Remove
89	Green Ash	Fraxinus pennsylvanica	11	F	F	F	2	Subject property	EAB infestation	Remove
90	Silver Maple	Acer saccharinum	32, 23, 17, 11, 11	F	FG	G	7	Subject property	Union at ground	Remove
91	Silver Maple	Acer saccharinum	20	G	G	G	5	Subject property		Remove
92	Eastern Cottonwood	Populus deltoides	30, 20	FG	G	G	5	Subject property	Union at 0.3 m	Remove
93	Willow species	Salix sp.	25	F	PF	PF	1	Subject property	Crown thicket at base, top of crown n dead	Remove
94	Green Ash	Fraxinus pennsylvanica	21	P	P	P	5	Subject property	Peeling bark, EAB infestation	Remove
95	Apple sp.	Malus sp.	13, 14, 15, 23	F	F	FG	4	Subject property	Unions at ground, epicormic branching	Remove
96	Apple sp.	Malus sp.	12, 12, 8	F	FG	FG	3	Subject property	Unions at ground and 1 m, epicormic branching, lean southeast	Remove
97	Green Ash	Fraxinus pennsylvanica	16	P	P	P	3	Subject property	Epicormic branching, EAB infestation	Remove
98	Green Ash	Fraxinus pennsylvanica	11	P	P	P	2	Subject property	Stem wounds, peeling bark, EAB infestation	Remove
99	White Elm	Ulmus americana	10	G	G	G	3	Subject property		Remove
100	Green Ash	Fraxinus pennsylvanica	18	P	P	P	4	Subject property	Union at 1.5 m, EAB infestation	Remove
101	White Oak	Quercus alba	31	G	G	G	5	Subject property		Preserve
102	Red Oak	Quercus rubra	18, 18	F	FG	G	4	Subject property	Union at ground with included bark	Remove
103	Red Oak	Quercus rubra	15	G	G	G	4	Subject property		Remove
104	Red Oak	Quercus rubra	63, 11, 17, 9	F	FG	G	11	Subject property	Unions at ground and 1.5 m	Remove
105	White Elm	Ulmus americana	14	G	G	G	3	Subject property		Remove
106	Trembling Aspen	Populus tremuloides	16	FG	FG	G	3	Subject property	SwEEP, crook	Remove
107	Trembling Aspen	Populus tremuloides	29	G	G	G	4	Subject property		Remove
108	Green Ash	Fraxinus pennsylvanica	13	P	P	P	2	Subject property	Epicormic branching, stem wounds, EAB infestation	Remove
109	Trembling Aspen	Populus tremuloides	16	G	G	G	3	Subject property		Remove
110	Trembling Aspen	Populus tremuloides	19	G	G	G	4	Subject property		Remove
111	White Elm	Ulmus americana	21	G	G	G	4	Subject property		Remove
112	Trembling Aspen	Populus tremuloides	20	P	P	P	2	Subject property	Canker, 50% crown deckback	Remove

Tree #	Common Name	Scientific Name	DBH	TI	CS	CV	DL	Location*	Comments	Recom.
113	White Elm	Ulmus americana	11	G	G	G	3	Subject property		Remove
114	Red Oak	Quercus rubra	60, 22	G	G	G	10	Subject property	Union at 1 m w/ th included bark	Remove
115	White Elm	Ulmus americana	12	F	F	FG	4	Subject property	Bow ed east - understorey	Remove
116	Red Oak	Quercus rubra	22	F	F	G	4	Subject property	Stem wound at flare w/ th heart rot	Remove
117	Red Oak	Quercus rubra	33	F	F	G	8	Subject property	Cavity at flare w/ th heart rot	Remove
118	Sugar Maple	Acer saccharum	7, 11, 21	F	F	G	4	Subject property	Union at ground and 0.5 m, diseased	Remove
119	Pin Oak	Quercus palustris	17	F	P	P	1	Subject property	Floor form, 50% crown n deckback	Remove
120	Basewood	Tilia americana	17	F	F	F	4	Subject property	Bow ed west, understorey	Remove
121	Red Oak	Quercus rubra	30	G	G	G	6	Subject property	Branch galls	Remove
122	Rear species	Pinus sp.	14	PF	FG	FG	2	Subject property	Union at 1.6 m, heavy swEEP	Remove
123	Red Oak	Quercus rubra	10	G	G	G	3	Subject property		Remove
124	Red Oak	Quercus rubra	12	G	G	G	2	Subject property		Remove
125	Green Ash	Fraxinus pennsylvanica	12	P	P	P	3	Subject property	Peeling bark, 90% crown deckback, EAB infestation	Remove
126	Pin Oak	Quercus palustris	39	G	G	G	5	Subject property		Preserve
127	Red Oak	Quercus rubra	14	FG	F	F	3	Subject property	Top of crown dead - 20% crown n deckback	Remove
128	Rear species	Pinus sp.	24, 18	F	F	F	3	Subject property	Union at 1.1 m, epicormic branching, understorey	Remove
129	Shagbark Hickory	Carya ovata	21	G	FG	G	4	Subject property	Understorey	Remove
130	White Elm	Ulmus americana	13	FG	FG	G	3	Subject property	Union at ground	Remove
131	Black Cherry	Prunus serotina	12	F	F	F	4	Subject property	SwEEP, bowed east	Remove
132	Shagbark Hickory	Carya ovata	31	G	G	G	4	Subject property		Remove
133	White Elm	Ulmus americana	13	G	G	G	2	Subject property		Remove
134	White Elm	Ulmus americana	16	G	G	G	3	Subject property		Remove
135	White Elm	Ulmus americana	16	G	G	G	3	Subject property		Remove
136	White Elm	Ulmus americana	22	G	G	G	4	Subject property		Remove
137	Green Ash	Fraxinus pennsylvanica	14	P	P	P	2	Subject property	50% crown n deckback, epicormic branching, peeling bark, EAB infestation	Remove
138	Pin Oak	Quercus palustris	36	G	G	G	7	Subject property		Remove
139	Green Ash	Fraxinus pennsylvanica	16	P	P	P	4	Subject property	Peeling bark, EAB infestation	Remove
140	Apple species	Malus sp.	21	F	FG	G	4	Subject property	Lean east	Remove
141	Rear species	Pinus sp.	20	G	G	G	3	Subject property		Remove
142	Green Ash	Fraxinus pennsylvanica	19	P	P	P	3	Subject property	Peeling bark, EAB infestation	Remove
143	Rear species	Pinus sp.	22	FG	FG	G	3	Subject property	Epicormic branching	Remove
144	Rear species	Pinus sp.	16	G	G	G	3	Subject property		Remove
145	White Oak	Quercus alba	38	G	G	G	5	Subject property		Remove
146	White Elm	Ulmus americana	12	G	G	G	3	Boundary		Remove
147	Pin Oak	Quercus palustris	24	G						