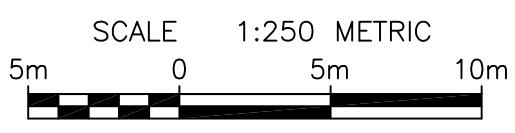
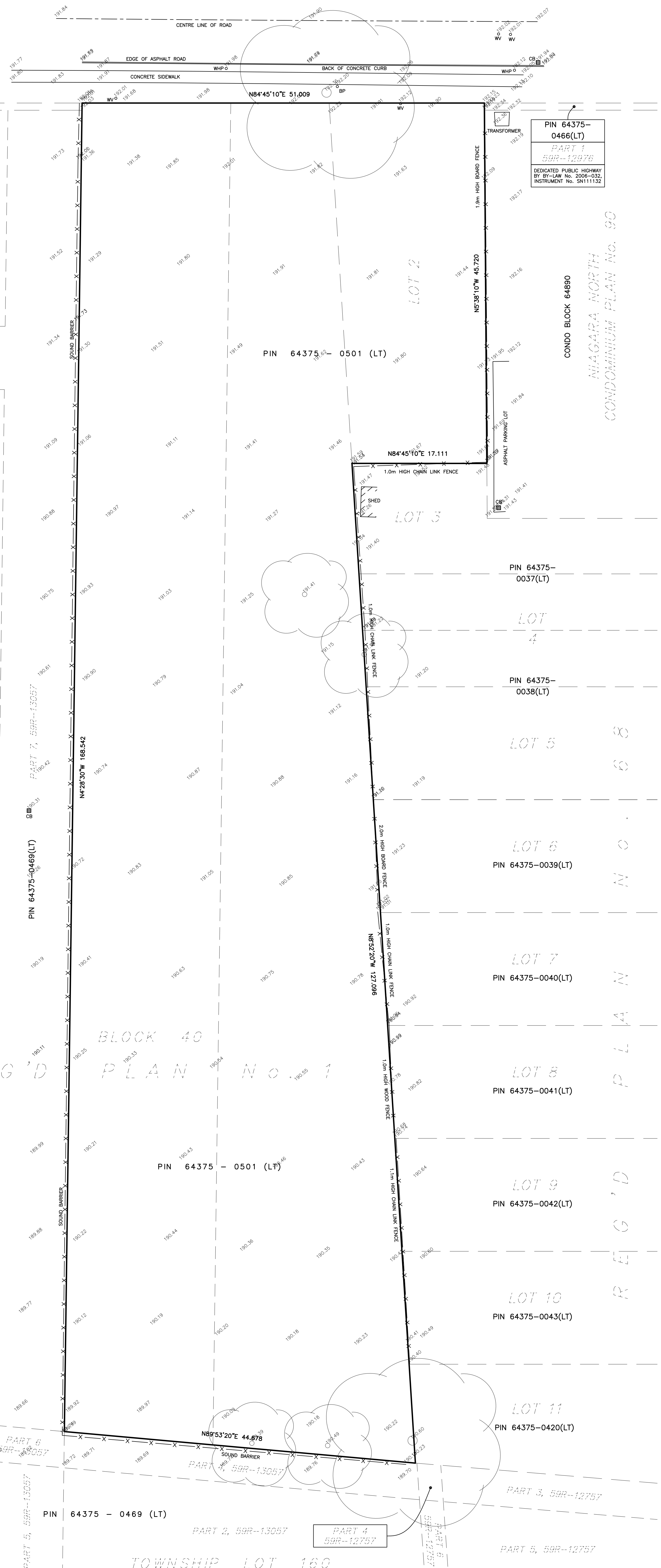


SITE CONDITION PLAN  
 PART OF BLOCK 40  
 REGISTERED PLAN No. 1  
 LOT 2, REGISTERED PLAN No. 68  
 CITY OF NIAGARA FALLS  
 REGIONAL MUNICIPALITY OF NIAGARA



DUNN STREET  
 (BY REGISTERED PLAN No. 1)  
 PIN 64351-0158(LT)



PART 1  
59R-9037

PIN 64375-0443(LT)  
 PART 2  
59R-12413  
 DEDICATED PUBLIC HIGHWAY  
 BY BY-LAW No. 2004-182,  
 INSTRUMENT No. SWS2420

PIN 64375-0466(LT)  
 PART 3  
59R-12976  
 DEDICATED PUBLIC HIGHWAY  
 BY BY-LAW No. 2006-032,  
 INSTRUMENT No. SN11132

**LEGEND**  
 BP DENOTES BELL PEDESTAL  
 CB DENOTES CATCH BASIN  
 WHP DENOTES WOOD HYDRO POLE  
 WV DENOTES WATER VALVE  
 190.20 DENOTES EXISTING ELEVATION  
 DENOTES DECIDUOUS TREE

**BEARING NOTE**  
 BEARINGS HEREON ARE GRID BEARINGS AND ARE DERIVED FROM OBSERVED REFERENCE POINTS BY REAL-TIME NETWORK OBSERVATIONS (LEICA SMARTNET) AND ARE REFERRED TO THE CENTRAL MERIDIAN 8700'W LONGITUDE, ZONE 17, UNIVERSAL TRANSVERSE MERCATOR (6° UTM). THESE VALUES ARE NAD83 (CSRS v7) EPOCH 2010.0 REFERENCE SYSTEM.

**METRIC NOTE**  
 DISTANCES AND CO-ORDINATES SHOWN ON THIS PLAN ARE IN METRES AND CAN BE CONVERTED TO FEET BY DIVIDING BY 0.3048. DISTANCES SHOWN ON THIS PLAN ARE ADJUSTED GROUND LEVEL DISTANCES AND CAN BE USED TO COMPUTE GRID CO-ORDINATES BY MULTIPLYING THE DISTANCES BY A COMBINED SCALE FACTOR OF 0.99987271.

**ELEVATION NOTE**  
 ELEVATIONS HEREON ARE ORTHOMETRIC AND ARE RELATED TO CGVD28, HT2, AS PREVIOUSLY ESTABLISHED BY THE LAROCQUE GROUP.

**THE LAROCQUE GROUP**  
 O.L.S./PROJECT CONSULTANTS/LAND MANAGEMENT  
 12 LYMAN STREET, ST. CATHARINES, ONTARIO  
 905-688-1413  
 6385 COLBORNE STREET, NIAGARA FALLS, ONTARIO  
 905-358-8400  
 www.larocquegroup.ca

DATE : JULY 11, 2023 FILE No. : NS2022-065 DWG FILE : NS2022-065-02