

Outdoor Ball Hockey Rink Rules

PLEASE HELP US KEEP THE RINK & PARKING LOT CLEAN, SAFE & ENJOYABLE

THIS IS A FREE, PUBLIC USE FACILITY. PLEASE HAVE RESPECT FOR EACH OTHER.



CLOSED AT 8PM DAILY UNLESS IDENTIFIED BY RED (CLOSED) SIGN.



The rink will be closed on days of inclement weather or if poor ice conditions exist.

Rink status will be identified by GREEN (Open) and RED (closed) signs.



BALL HOCKEY ONLY.

Only ball hockey is permitted. No pucks are allowed on the surface.



MASKS ARE REQUIRED.

Wear a mask on and near the surface.



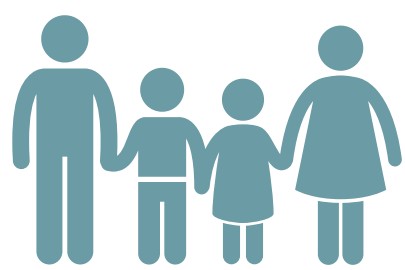
USE THIS SURFACE AT YOUR OWN RISK.

There is a risk associated with the activity of ball hockey.



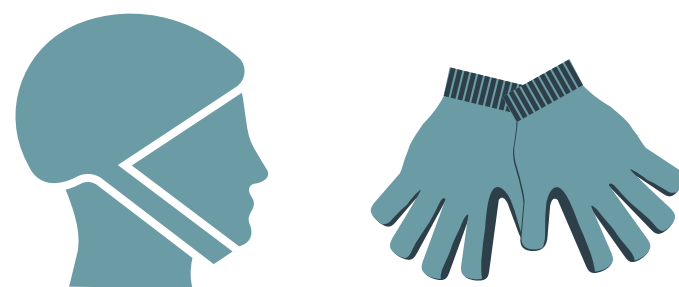
SURVEY SURFACE PRIOR TO USE.

Outdoor surfaces can be uneven.

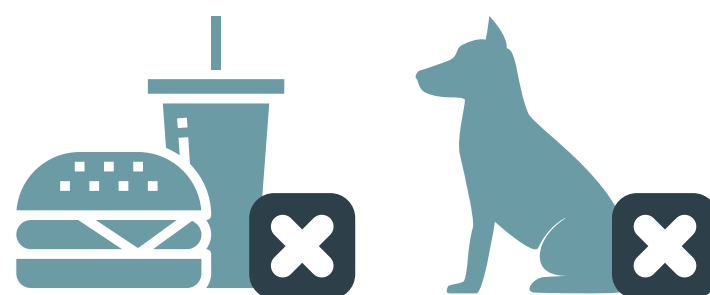


CHILD SUPERVISION.

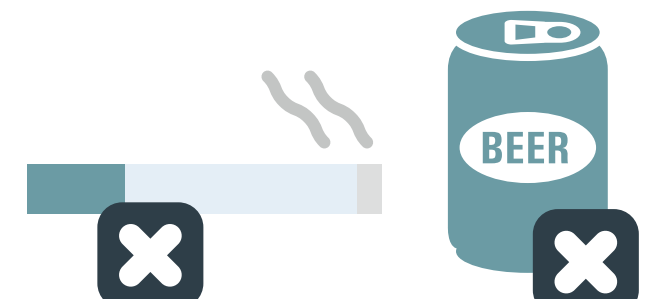
Children should be supervised at all times.



HELMETS AND PROTECTIVE SAFETY GEAR ARE STRONGLY RECOMMENDED.



FOOD, DRINKS, GLASS OBJECTS AND PETS ARE NOT ALLOWED.



SMOKING/VAPING, ALCOHOL & DRUGS ARE NOT ALLOWED.



STAY SAFE AND HAVE FUN!

The RZone procedure enforces no tolerance of violence, vandalism and inappropriate behaviour for participants and the public.



REPORT ANY MAINTENANCE CONCERNS TO STAFF INSIDE THE GALE CENTRE.

IN CASE OF AN EMERGENCY, CALL 911