



OUTDOOR BALL HOCKEY SURFACE RULES

PLEASE HELP US KEEP THE SURFACES & PARKING LOT CLEAN, SAFE & ENJOYABLE

This is a free, public use facility. Please have respect for each other.



CLOSED AT 8PM DAILY

The surface is closed on days of inclement weather or if poor conditions exist.



BALL HOCKEY ONLY

Only ball hockey is permitted. No pucks are allowed on the surface.



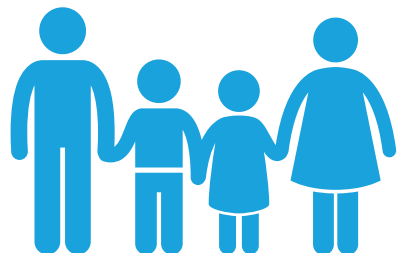
USE THIS SURFACE AT YOUR OWN RISK

There is a risk associated with the activity of ball hockey.



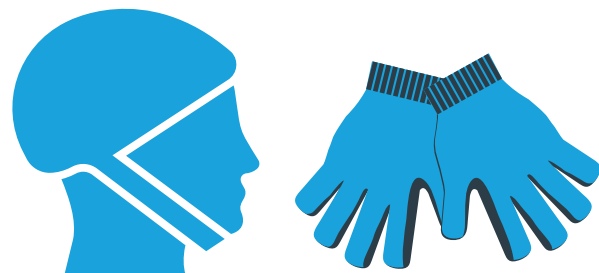
SURVEY SURFACES PRIOR TO USE

Outdoor surfaces can be uneven.



CHILD SUPERVISION

Children should be supervised at all times.



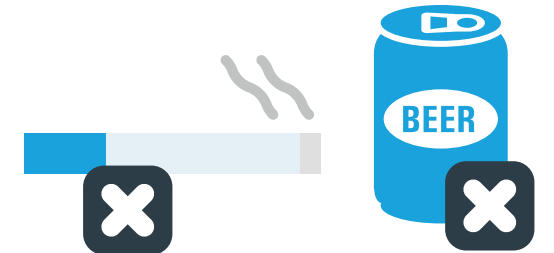
RECOMMENDED:

Helmets and protective safety gear.



NOT ALLOWED:

Food, drinks, glass objects and pets.



NOT ALLOWED:

Smoking/vaping, alcohol & drugs.



STAY SAFE AND HAVE FUN!

The RZone procedure enforces no tolerance of violence, vandalism and inappropriate behaviour for participants and the public.



REPORT ANY MAINTENANCE CONCERNS TO STAFF INSIDE THE GALE CENTRE.

IN CASE OF AN EMERGENCY, CALL 911