

27 - Hunter's Drain

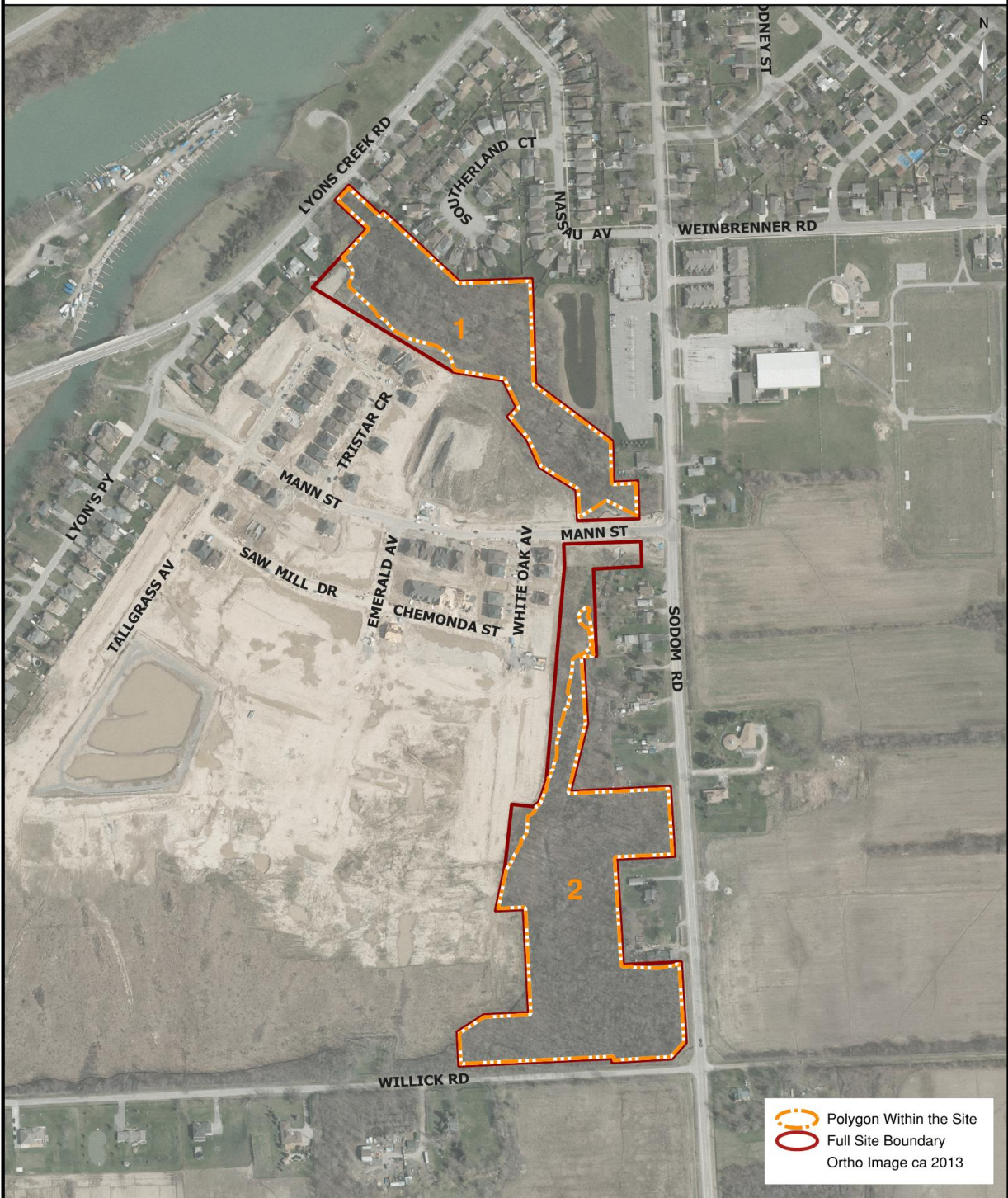


Table 27- Hunter's Drain

Site 27 Hunter's Drain

General Description

Hunter's Drain is separated into two areas, one that is north of Mann St. and one to the south.

Hunter's Drain North

The survey team went into the interior from the parking lot at Betty's Restaurant and surveyed the area until they reached places where the brush was too thick. At Mann St. the drain is fenced because of construction so they surveyed around the perimeter. Afterwards they went to Lyon's Creek Road and again surveyed as much as they could from the perimeter.

Hunter's Drain South

This area follows the drain south of Mann St to Willick Rd. As in Hunter's Drain North, a fence separates the natural area from the subdivision limiting encroachments. The survey team walked alongside the fence from Mann St. south to Willick Rd.

Polygon 1

This area follows the drain and lies between Lyon's Creek Road and Sodom Road north of Mann St. The drain has no vegetation growing on its banks at all. The survey team encountered no encroachments; a fence was in place at the subdivision. There was a fair amount of dumping of garden and building supplies and some broken bottles. Invasive species were numerous and widespread. They did see some nice trees such as large shagbark hickories and red oak.

Polygon 2

The shrub layer was very dense and the vegetation needed to be observed from the perimeter; thus many herbaceous plants may have been missed in the survey. The canopy through most of the area is open with green ash being the dominant species, and there were some elm and pin oak. In the southern section near Willick Rd, the canopy is fuller and there is less of an understory. There was some evidence of deer browsing in the understory.

Recommendations

1. Although the plant species found here were fairly common, the vegetation provides a useful wildlife corridor through this expanding urban area. As in other recent developments, the practice of fencing off the subdivision from the natural area helps to minimize encroachments
2. Removal of invasive species should be done. Priority for removal shall be in areas where there is greater impact on the existing native vegetation. After removal of invasive species has occurred, monitoring is necessary to ensure that these plants do not re-establish themselves. The techniques used for the removals shall be tailored to the invasive species being removed and be in accordance with industry standards.

- Litter and debris should be removed from the woodland. Consideration should be made for the installation of waste receptacles at the entrance to the woodland in a convenient location for both the public and maintenance staff. Natural debris from dead trees shall be left on-site but moved off trails.



Figure 1- New subdivision seen across meadow. Credit: NF Nature Club



Figure 2- Drain area on Willick Road after the rain. Credit: NF Nature Club

Hunter's Drain Plant Species Inventory

Legend:

Layer: 1=Canopy(>10M), 2=Sub-Canopy, 3=Understory, 4=Ground Layer

Abundance: r=Rare, o=Occasional, a=Abundant, d=Dominant

Invasive Species: ai=Aggressive Invasive Species, i=Invasive Species

Old Growth: og=Old Growth

Plantation: p=Plantation Species

Federal Status: t=Threatened, v=Vulnerable, sp=Special Concern

Provincial Status: e=Endangered, t=Threatened, v=Vulnerable

Site Number	Site Name	Polygon	Layer	Species	Abundance	Invasive	Old Growth	Plantation	Federal	Provincial
27	Hunter's Drain	2	1	Acer rubrum	o					
27	Hunter's Drain	1	1	Acer saccharum	r					
27	Hunter's Drain	1	1	Carya ovata	o					
27	Hunter's Drain	2	1	Fraxinus pennsylvanica	d					
27	Hunter's Drain	1	1	Fraxinus pennsylvanica	d					
27	Hunter's Drain	1	1	Juglan nigra	r					
27	Hunter's Drain	2	1	Populus deltoides	r					
27	Hunter's Drain	1	1	Quercus alba	r					
27	Hunter's Drain	2	1	Quercus palustris	o					
27	Hunter's Drain	2	1	Quercus rubra	o					
27	Hunter's Drain	1	1	Quercus rubra	o					
27	Hunter's Drain	1	1	Salix sp.	r					
27	Hunter's Drain	2	1	Ulmus sp.	a					
27	Hunter's Drain	2	2	Amelanchier	r					
27	Hunter's Drain	1	2	Carpinus caroliniana	r					
27	Hunter's Drain	2	2	Crataegus sp.	o					
27	Hunter's Drain	1	2	Crataegus succulenta	a					
27	Hunter's Drain	2	2	Lonicera tatarica	o	i				
27	Hunter's Drain	1	2	Malus sp.	r					
27	Hunter's Drain	2	2	Malus sp.	r					
27	Hunter's Drain	1	2	Ostrya virginiana	r					
27	Hunter's Drain	1	2	Populus sp.	r					
27	Hunter's Drain	2	2	Populus tremuloides	r					
27	Hunter's Drain	2	2	Prunus sp.	r					
27	Hunter's Drain	2	2	Quercus bicolor	r					

Site Number	Site Name	Polygon	Layer	Species	Abundance	Invasive	Old Growth	Plantation	Federal	Provincial
27	Hunter's Drain	1	2	Quercus palustris	r					
27	Hunter's Drain	2	2	Quercus palustris	o					
27	Hunter's Drain	1	2	Rhamnus cathartica	d	ai				
27	Hunter's Drain	2	2	Rhamnus cathartica	d	ai				
27	Hunter's Drain	2	2	Salix sp.	a					
27	Hunter's Drain	1	2	Tilia americana	o					
27	Hunter's Drain	1	2	Ulmus americana	o					
27	Hunter's Drain	2	2	Ulmus sp.	o					
27	Hunter's Drain	1	3	Cornus obliqua	r					
27	Hunter's Drain	1	3	Cornus racemosa	d					
27	Hunter's Drain	2	3	Cornus racemosa	d					
27	Hunter's Drain	2	3	Cornus stolonifera	o					
27	Hunter's Drain	1	3	Frangula alnus	r	ai				
27	Hunter's Drain	2	3	Frangula alnus	o	ai				
27	Hunter's Drain	1	3	Ligustrum vulgare	r	i				
27	Hunter's Drain	2	3	Quercus bicolor	r					
27	Hunter's Drain	1	3	Rhus radicans	a					
27	Hunter's Drain	1	3	Rhus typhina	r					
27	Hunter's Drain	2	3	Rhus typhina	r					
27	Hunter's Drain	1	3	Ribes sp.	r					
27	Hunter's Drain	2	3	Ribes sp.	o					
27	Hunter's Drain	2	3	Rosa eglanteria	o					
27	Hunter's Drain	1	3	Rosa multiflora	a	i				
27	Hunter's Drain	2	3	Rosa multiflora	o	i				
27	Hunter's Drain	2	3	Rubus canadensis	r					
27	Hunter's Drain	1	3	Rubus idaeus	r					
27	Hunter's Drain	2	3	Rubus idaeus	o					
27	Hunter's Drain	1	3	Rubus occidentalis	o					
27	Hunter's Drain	2	3	Rubus occidentalis	o					
27	Hunter's Drain	2	3	Spiraea alba	a					
27	Hunter's Drain	1	3	Vitis sp.	a					
27	Hunter's Drain	1	4	Alliaria petiolata	a	ai				
27	Hunter's Drain	1	4	Ambrosia artemisiifolia	a					

Site Number	Site Name	Polygon	Layer	Species	Abundance	Invasive	Old Growth	Plantation	Federal	Provincial
27	Hunter's Drain	2	4	Ambrosia artemisiifolia	a					
27	Hunter's Drain	1	4	Ambrosia trifida	a					
27	Hunter's Drain	2	4	Apocynum cannabinum	a					
27	Hunter's Drain	1	4	Asclepias syriaca	o					
27	Hunter's Drain	1	4	Aster lateriflorus	a					
27	Hunter's Drain	2	4	Aster lateriflorus	a					
27	Hunter's Drain	1	4	Aster macrophyllus	o					
27	Hunter's Drain	1	4	Aster novae-angliae	o					
27	Hunter's Drain	2	4	Aster novae-angliae	a					
27	Hunter's Drain	1	4	Aster pilosus	o					
27	Hunter's Drain	2	4	Aster pilosus	a					
27	Hunter's Drain	2	4	Aster simplex	o					
27	Hunter's Drain	1	4	Bidens frondosa	a					
27	Hunter's Drain	2	4	Bidens frondosa	a					
27	Hunter's Drain	1	4	Chenopodium album	o					
27	Hunter's Drain	1	4	Circaea quadrisulcata	o					
27	Hunter's Drain	2	4	Dactylis glomerata	a					
27	Hunter's Drain	1	4	Daucus carota	o					
27	Hunter's Drain	2	4	Daucus carota	o					
27	Hunter's Drain	1	4	Dianthus armeria	o					
27	Hunter's Drain	1	4	Dipsacus sylvestris	o					
27	Hunter's Drain	1	4	Echinochloa	a					
27	Hunter's Drain	2	4	Echinochloa	a					
27	Hunter's Drain	1	4	Eupatorium perfoliatum	o					
27	Hunter's Drain	2	4	Eupatorium perfoliatum	o					
27	Hunter's Drain	2	4	Fragaria sp.	a					
27	Hunter's Drain	1	4	Geum sp.	a					
27	Hunter's Drain	2	4	Geum sp.	a					
27	Hunter's Drain	1	4	Impatiens capensis	o					
27	Hunter's Drain	2	4	Iris sp.	r					
27	Hunter's Drain	2	4	Lycopus uniflorus	a					
27	Hunter's Drain	1	4	Lysimachia nummularia	a	i				
27	Hunter's Drain	2	4	Lysimachia nummularia	a	i				

Site Number	Site Name	Polygon	Layer	Species	Abundance	Invasive	Old Growth	Plantation	Federal	Provincial
27	Hunter's Drain	1	4	Parthenocissus sp.	o					
27	Hunter's Drain	2	4	Parthenocissus sp.	a					
27	Hunter's Drain	1	4	Phalaris arundinacea	a	ai				
27	Hunter's Drain	2	4	Phalaris arundinacea	a	ai				
27	Hunter's Drain	1	4	Phragmites	r	ai				
27	Hunter's Drain	2	4	Phragmites	o	ai				
27	Hunter's Drain	1	4	Pilea pumila	o					
27	Hunter's Drain	1	4	Polygonella lapathifolium	o					
27	Hunter's Drain	1	4	Polygonum pensylvanicum	a					
27	Hunter's Drain	2	4	Polygonum pensylvanicum	o					
27	Hunter's Drain	1	4	Prunella vulgaris	o					
27	Hunter's Drain	2	4	Rhus radicans	o					
27	Hunter's Drain	1	4	Solidago canadensis	a					
27	Hunter's Drain	2	4	Solidago canadensis	a					
27	Hunter's Drain	1	4	Solidago graminifolia	o					
27	Hunter's Drain	1	4	Solidago rugosa	r					
27	Hunter's Drain	2	4	Sonchus sp.	o					
27	Hunter's Drain	2	4	Tovara virginiana	o					
27	Hunter's Drain	2	4	Trifolium pratense	o					
27	Hunter's Drain	2	4	Tussilago farfara	r					
27	Hunter's Drain	1	4	Typha latifolia	r					
27	Hunter's Drain	2	4	Typha sp.	a					
27	Hunter's Drain	2	4	Vitis sp.	o					
27	Hunter's Drain	1	4	Xanthium chinense	r					

Hunter's Drain Disturbance Report

Site	Polygon	Disturbance / Extent	Total Score
27 Hunter's Drain	1	Alien Species / Extent Of Alien Species	4
27 Hunter's Drain	1	Beaver Activity / Extent Of Beaver Activity	0
27 Hunter's Drain	1	Browse (e.g. Deer) / Extent Of Browse	0
27 Hunter's Drain	1	Construction In Area	4
27 Hunter's Drain	1	Disease/Death Of Trees / Extent Of Disease/Death	0
27 Hunter's Drain	1	Dumping (rubbish) / Extent Of Dumping	4
27 Hunter's Drain	1	Earth Displacement / Extent Of Displacement	0
27 Hunter's Drain	1	Fire / Extent Of Fire	0
27 Hunter's Drain	1	Flooding (Pools & Puddling) / Extent Of Flooding	1
27 Hunter's Drain	1	Gaps In Forest Canopy / Extent Of Gaps	0
27 Hunter's Drain	1	Ice Damage / Extent Of Ice Damage	0
27 Hunter's Drain	1	Intensity / Extent Of Logging	0
27 Hunter's Drain	1	Livestock (Grazing) / Extent Of Livestock	0
27 Hunter's Drain	1	Noise / Extent Of Noise	1
27 Hunter's Drain	1	Planting (plantation) / Extent Of Planting	0
27 Hunter's Drain	1	Recreational Use / Extent Of Recr. Use	1
27 Hunter's Drain	1	Sugar Bush Operations / Extent Of Operations	0
27 Hunter's Drain	1	Time Since Logging	0
27 Hunter's Drain	1	Tracks And Trails / Extent Of Tracks/Trails	1
27 Hunter's Drain	1	Wind Throw (blow Down) / Extent Of Wind Throw	0
27 Hunter's Drain	2	Alien Species / Extent Of Alien Species	4
27 Hunter's Drain	2	Beaver Activity / Extent Of Beaver Activity	0
27 Hunter's Drain	2	Browse (e.g. Deer) / Extent Of Browse	4
27 Hunter's Drain	2	Disease/Death Of Trees / Extent Of Disease/Death	0
27 Hunter's Drain	2	Dumping (rubbish) / Extent Of Dumping	1
27 Hunter's Drain	2	Earth Displacement / Extent Of Displacement	0
27 Hunter's Drain	2	Fire / Extent Of Fire	0
27 Hunter's Drain	2	Flooding (Pools & Puddling) / Extent Of Flooding	1
27 Hunter's Drain	2	Gaps In Forest Canopy / Extent Of Gaps	0
27 Hunter's Drain	2	Ice Damage / Extent Of Ice Damage	0
27 Hunter's Drain	2	Intensity / Extent Of Logging	0
27 Hunter's Drain	2	Livestock (Grazing) / Extent Of Livestock	0
27 Hunter's Drain	2	Noise / Extent Of Noise	1
27 Hunter's Drain	2	Planting (plantation) / Extent Of Planting	0
27 Hunter's Drain	2	Recreational Use / Extent Of Recr. Use	1
27 Hunter's Drain	2	Sugar Bush Operations / Extent Of Operations	0
27 Hunter's Drain	2	Time Since Logging	0
27 Hunter's Drain	2	Tracks And Trails / Extent Of Tracks/Trails	1
27 Hunter's Drain	2	Wind Throw (blow Down) / Extent Of Wind Throw	1