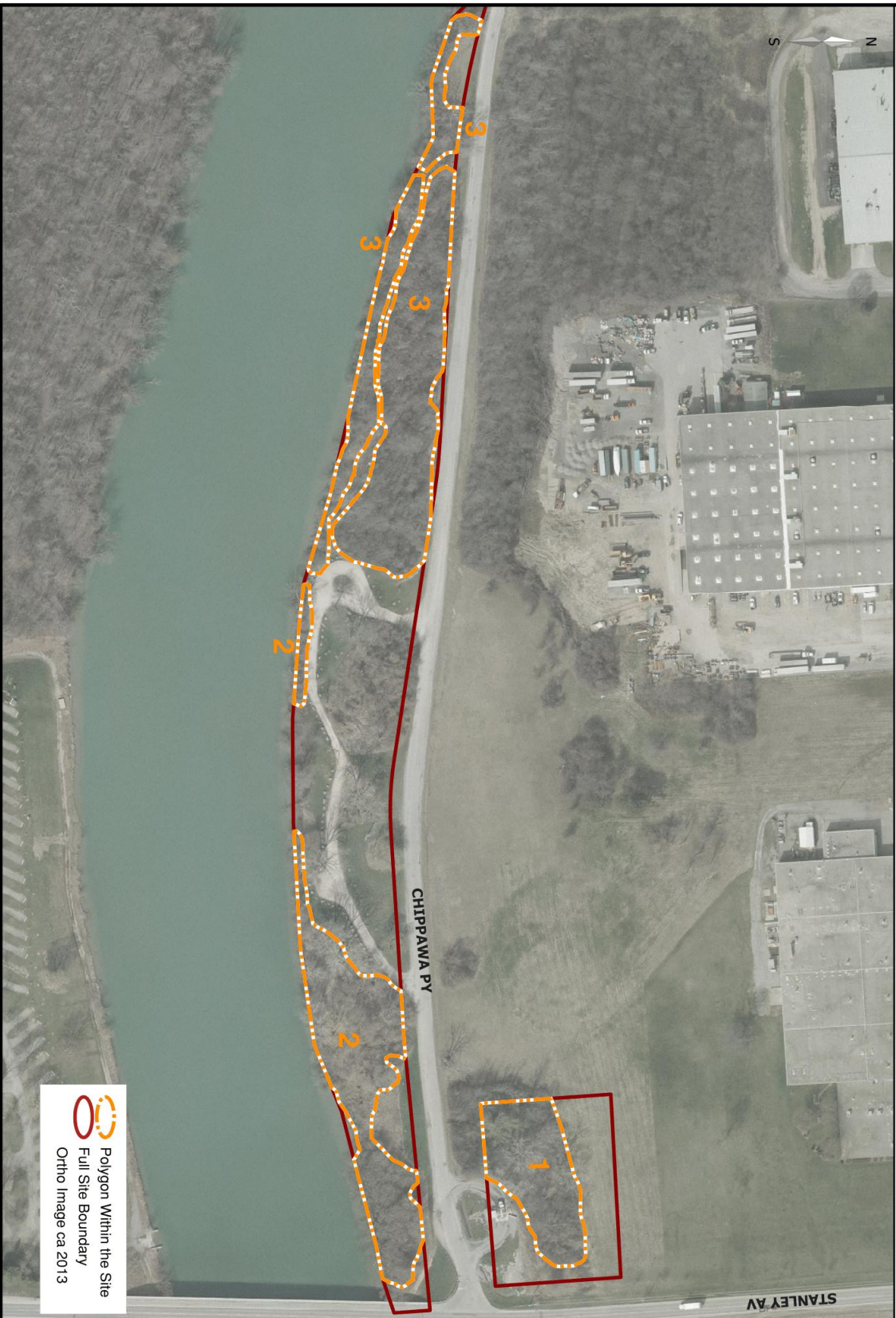


## 25 - George Bukator Park (East)



## 25 - George Bukator Park (West)

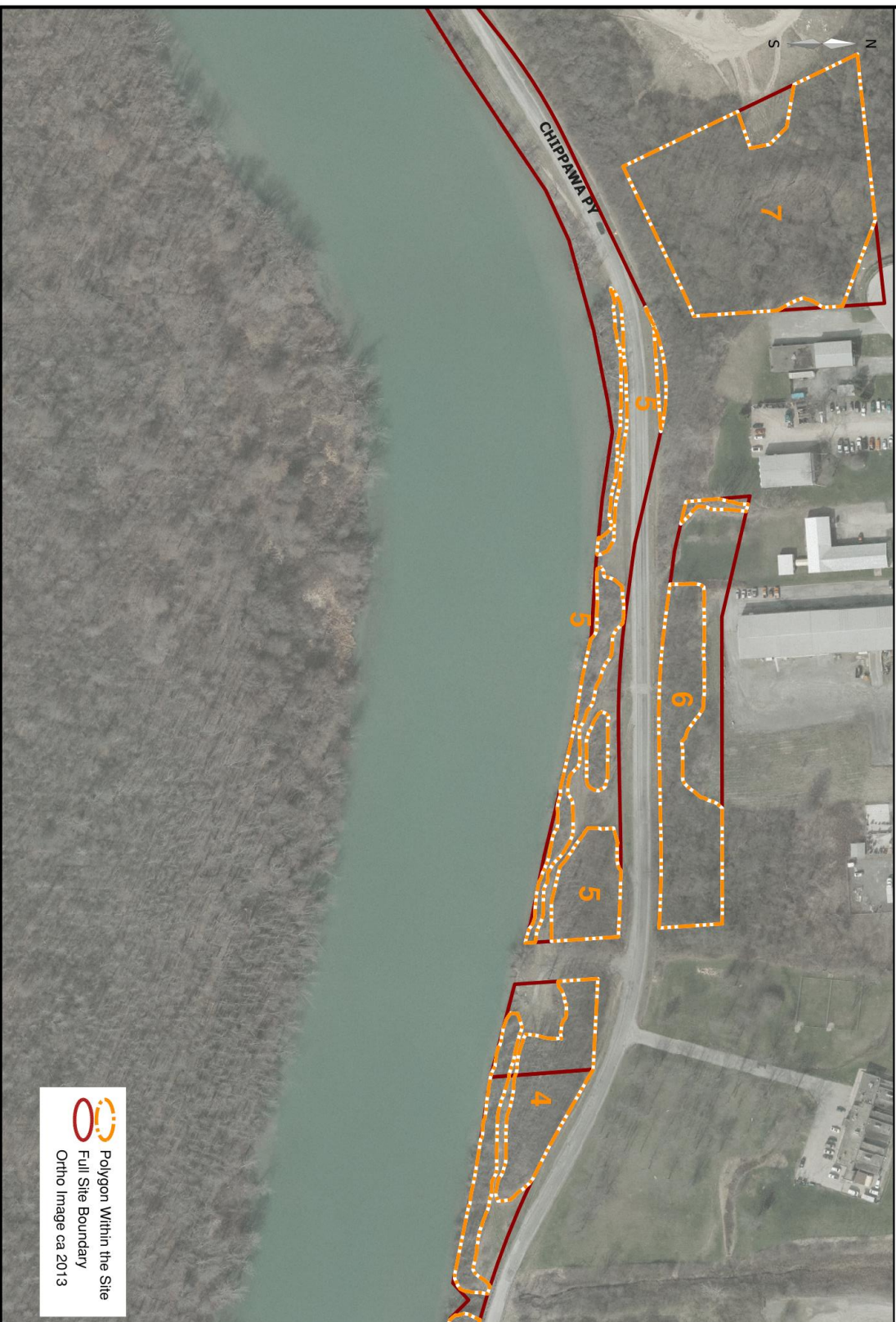


Table 25- George Bukator Park

## Site 25 George Bukator Park

<i>General Description</i>	<p>George Bukator Park is a linear park along the north bank of the Welland River (also known as Chippawa Creek) stretching from Stanley Avenue west along Chippawa Parkway towards Oldfield Rd. Most of the land is south of Chippawa Parkway but there are a few parcels (Polygons 1, 6 &amp; 7) on the north side of the Parkway.</p> <p>Most of the wooded areas have a prominence of early successional species (such as ash and cottonwood) and a very dense understory of shrubs (including buckthorn, hawthorns and dogwoods). A future phase of the Millennium Trail has been proposed to follow this route.</p> <p>For purposes of the survey, seven polygons were identified.</p>
<i>Polygon 1</i>	<p>Is a small woodlot on the northwest corner of Stanley Ave and Chippawa Parkway behind a water filling station. The vegetation is very dense making access difficult. There was a noticeable amount of trash such as discarded pop cans and beer bottles.</p>
<i>Polygon 2</i>	<p>Is south of Chippawa Parkway just to the east of Stanley Ave. It consists of a well maintained parkette with an access road, parking area, trash containers, lawn and a number of planted trees. Denser forested areas exist to the east and west of the parkette.</p>
<i>Polygon 3</i>	<p>Is just west of Polygon 2. A heavily rutted trail runs from Polygon 2 west through the area providing access to the otherwise dense vegetation. Significant amounts of trash were noted alongside trails that extend into the wooded areas. The trash consists of discarded sleeping bags, blankets, beer cans, and other debris which suggest that the area has been used in the past for bush parties. It is perhaps interesting to note that the dominant tree species in this polygon was European black alder (<i>Alnus glutinosa</i>), the first time during the park survey that this species was found.</p>
<i>Polygon 4</i>	<p>Located just west of Polygon 3 and has similar characteristics to that Polygon. This was perhaps the worst area for discarded trash.</p>
<i>Polygon 5</i>	<p>Is the area to the west of Polygon 4. Here the trail became inaccessible because the deep ruts were filled with water and wetland plant species. Due to difficult access, this area was surveyed from the road edge. Pockets of meadow reach into the wooded area which then gradually thins out to the west until it reaches a hedgerow along the river bank.</p>

### *Polygon 6*

Is on the north side of Chippawa Parkway opposite Polygon 5. The dense vegetation required that the survey be conducted from the road edge.

### *Polygon 7*

Is further west on the north side of Chippawa Parkway. Like polygon 6, vegetation along the roadway was very thick, limiting access to the property. However, access was possible from the property to the west, which appears to be a former dump. There is evidence here of recent dumping, including on what is part of Polygon 7. Trails from the dumpsite provided access into the polygon. In the northern part of the polygon, furthest from the road, there is some mature forest consisting of red oak, pin oak, and shagbark hickory. Here, like in the rest of the park, a dense understory of shrubs dominates.

### *Recommendations*

1. Litter and debris should be removed from the woodland. Consideration should be made for the installation of waste receptacles at the entrance to the woodland in a convenient location for both the public and maintenance staff. Natural debris from dead trees shall be left on-site but moved off trails.
2. To raise awareness of the woodland features and functions, informative signage should be put on site. The signage should be installed near a main trail or access point to the woodland.
3. Removal of invasive species should be done. Priority for removal shall be in areas where there is greater impact on the existing native vegetation. After removal of invasive species has occurred, monitoring is necessary to ensure that these plants do not re-establish themselves. The techniques used for the removals shall be tailored to the invasive species being removed and be in accordance with industry standards.
4. All-terrain vehicle (ATV) barriers should be installed strategically to deter this illegal activity. Careful considerations should be made to the location of the barriers to insure that ATVs aren't simply moved to a different part of the woodland. Special signage should be part of these barriers that inform ATVer's of the negative impact they are doing to the natural environment and the potential harm they could cause to park users.
5. Repair damaged trails
6. The cause of trail drainage issues should be determined so that the repairs fully address the issues. Drainage culverts and boardwalks are commonly used. Importing new topsoil into the woodlands should be done sparingly to minimize the risk of introducing invasive species from a foreign seed bank.



Figure 1- Rutted trail with wetland species. Credit: NF Nature Club

# George Bukator Park Plant Species Inventory

Legend:

Layer: 1=Canopy(>10M), 2=Sub-Canopy, 3=Understory, 4=Ground Layer

Abundance: r=Rare, o=Occasional, a=Abundant, d=Dominant

Invasive Species: ai=Aggressive Invasive Species, i=Invasive Species

Old Growth: og=Old Growth

Plantation: p=Plantation Species

Federal Status: t=Threatened, v=Vulnerable, sp=Special Concern

Provincial Status: e=Endangered, t=Threatened, v=Vulnerable

Site Number	Site Name	Polygon	Layer	Species	Abundance	Invasive	Old Growth	Plantation	Federal	Provincial
25	George Bukator Park	2	1	Acer negundo	a					
25	George Bukator Park	2	1	Acer platanoides	r	i				
25	George Bukator Park	1	1	Acer platanoides	r	i				
25	George Bukator Park	5	1	Acer platanoides	r	i				
25	George Bukator Park	3	1	Alnus glutinosa	d					
25	George Bukator Park	7	1	Carya ovata	o					
25	George Bukator Park	2	1	Fraxinus pennsylvanica	a					
25	George Bukator Park	3	1	Fraxinus pennsylvanica	a					
25	George Bukator Park	4	1	Fraxinus pennsylvanica	d					
25	George Bukator Park	5	1	Fraxinus pennsylvanica	a					
25	George Bukator Park	6	1	Fraxinus pennsylvanica	d					
25	George Bukator Park	1	1	Fraxinus pennsylvanica	a					
25	George Bukator Park	6	1	Gleditsia tricanthos	r					
25	George Bukator Park	3	1	Juglan nigra	r					
25	George Bukator Park	1	1	Juglan nigra	r					
25	George Bukator Park	3	1	Malus sp.	r					
25	George Bukator Park	7	1	Malus sp.	r					
25	George Bukator Park	1	1	Malus sp.	o					
25	George Bukator Park	2	1	Morus alba	r					
25	George Bukator Park	3	1	Populus deltoides	a					
25	George Bukator Park	5	1	Populus deltoides	o					
25	George Bukator Park	6	1	Populus deltoides	r					
25	George Bukator Park	7	1	Populus deltoides	o					
25	George Bukator Park	1	1	Populus deltoides	d					
25	George Bukator Park	2	1	Pyrus communis	r					

Site Number	Site Name	Polygon	Layer	Species	Abundance	Invasive	Old Growth	Plantation	Federal	Provincial
25	George Bukator Park	7	1	Quercus bicolor	r					
25	George Bukator Park	7	1	Quercus palustris	o					
25	George Bukator Park	1	1	Quercus palustris	r					
25	George Bukator Park	7	1	Quercus rubra	a					
25	George Bukator Park	2	1	Salix sp.	a					
25	George Bukator Park	7	1	Salix sp.	a					
25	George Bukator Park	1	1	Salix sp.	o					
25	George Bukator Park	2	1	Tilia americana	r					
25	George Bukator Park	3	1	Ulmus americana	r					
25	George Bukator Park	5	1	Ulmus americana	o					
25	George Bukator Park	6	1	Ulmus americana	o					
25	George Bukator Park	7	1	Ulmus americana	o					
25	George Bukator Park	2	2	Alnus glutinosa	r					
25	George Bukator Park	4	2	Alnus glutinosa	r	i				
25	George Bukator Park	5	2	Crataegus crus-galli	o					
25	George Bukator Park	3	2	Crataegus sp.	a					
25	George Bukator Park	5	2	Crataegus sp.	o					
25	George Bukator Park	7	2	Crataegus sp.	a					
25	George Bukator Park	1	2	Crataegus sp.	o					
25	George Bukator Park	4	2	Malus sp.	r					
25	George Bukator Park	4	2	Populus deltoides	o					
25	George Bukator Park	4	2	Prunus Americana	r					
25	George Bukator Park	1	2	Prunus avium	r					
25	George Bukator Park	3	2	Prunus sp.	r					
25	George Bukator Park	3	2	Quercus palustris	r					
25	George Bukator Park	1	2	Quercus palustris	o					
25	George Bukator Park	2	2	Quercus rubra	r					
25	George Bukator Park	3	2	Quercus rubra	r					
25	George Bukator Park	1	2	Rhamnus cathartica	a	ai				
25	George Bukator Park	3	2	Rhamnus cathartica	a	ai				
25	George Bukator Park	4	2	Rhamnus cathartica	a	ai				
25	George Bukator Park	6	2	Rhamnus cathartica	d	ai				
25	George Bukator Park	7	2	Rhamnus cathartica	o	ai				

Site Number	Site Name	Polygon	Layer	Species	Abundance	Invasive	Old Growth	Plantation	Federal	Provincial
25	George Bukator Park	4	2	Rhus radicans	o					
25	George Bukator Park	2	2	Rhus typhina	a					
25	George Bukator Park	3	2	Rhus typhina	a					
25	George Bukator Park	4	2	Salix sp.	o					
25	George Bukator Park	6	2	Salix sp.	a					
25	George Bukator Park	2	2	Tilia cordata	r					
25	George Bukator Park	1	3	Acer negundo	r					
25	George Bukator Park	1	3	Cornus racemosa	a					
25	George Bukator Park	3	3	Cornus racemosa	a					
25	George Bukator Park	4	3	Cornus racemosa	a					
25	George Bukator Park	5	3	Cornus racemosa	a					
25	George Bukator Park	6	3	Cornus racemosa	a					
25	George Bukator Park	7	3	Cornus racemosa	a					
25	George Bukator Park	3	3	Cornus stolonifera	o					
25	George Bukator Park	4	3	Crataegus crus-galli	a					
25	George Bukator Park	4	3	Crataegus mollis	a					
25	George Bukator Park	4	3	Crataegus sp.	a					
25	George Bukator Park	6	3	Crataegus sp.	a					
25	George Bukator Park	1	3	Ligustrum vulgare	r	i				
25	George Bukator Park	5	3	Ligustrum vulgare	r	i				
25	George Bukator Park	6	3	Ligustrum vulgare	o	i				
25	George Bukator Park	2	3	Physocarpus opulifolius	r					
25	George Bukator Park	5	3	Quercus palustris	r					
25	George Bukator Park	5	3	Rhamnus cathartica	a	ai				
25	George Bukator Park	1	3	Rhus typhina	a					
25	George Bukator Park	5	3	Rhus typhina	o					
25	George Bukator Park	2	3	Ribes sp.	r					
25	George Bukator Park	1	3	Rosa multiflora	a	i				
25	George Bukator Park	2	3	Rosa multiflora	a	i				
25	George Bukator Park	3	3	Rosa multiflora	a	i				
25	George Bukator Park	5	3	Rosa multiflora	r	i				
25	George Bukator Park	6	3	Rosa multiflora	r	i				
25	George Bukator Park	2	3	Rubus canadensis	o					



Site Number	Site Name	Polygon	Layer	Species	Abundance	Invasive	Old Growth	Plantation	Federal	Provincial
25	George Bukator Park	3	3	Rubus idaeus	o					
25	George Bukator Park	2	3	Rubus occidentalis	o					
25	George Bukator Park	1	3	Sambucus canadensis	r					
25	George Bukator Park	2	3	Sambucus canadensis	r					
25	George Bukator Park	1	3	Viburnum acerifolium	r					
25	George Bukator Park	2	3	Viburnum acerifolium	o					
25	George Bukator Park	3	3	Viburnum lentago	r					
25	George Bukator Park	4	3	Viburnum lentago	r					
25	George Bukator Park	2	3	Viburnum sp.	r					
25	George Bukator Park	5	3	Viburnum sp.	r					
25	George Bukator Park	3	4	Achillea millefolium	r					
25	George Bukator Park	5	4	Alisma plantago-aquatica	o					
25	George Bukator Park	2	4	Alliaria petiolata	o	ai				
25	George Bukator Park	3	4	Allium sp.	a					
25	George Bukator Park	5	4	Ambrosia artemisiifolia	a					
25	George Bukator Park	6	4	Ambrosia artemisiifolia	a					
25	George Bukator Park	3	4	Anemone canadensis	a					
25	George Bukator Park	5	4	Anemone canadensis	o					
25	George Bukator Park	2	4	Arctium minus	a					
25	George Bukator Park	3	4	Asclepias syriaca	o					
25	George Bukator Park	7	4	Asclepias syriaca	o					
25	George Bukator Park	3	4	Aster sp.	a					
25	George Bukator Park	5	4	Bidens frondosa	o					
25	George Bukator Park	2	4	Brassica sp.	a					
25	George Bukator Park	3	4	Centaurea sp.	a					
25	George Bukator Park	5	4	Centaurea sp.	a					
25	George Bukator Park	6	4	Centaurea sp.	o					
25	George Bukator Park	1	4	Cichorium intybus	o					
25	George Bukator Park	2	4	Cichorium intybus	o					
25	George Bukator Park	3	4	Cichorium intybus	a					
25	George Bukator Park	4	4	Cichorium intybus	a					
25	George Bukator Park	2	4	Circaea quadrisulcata	o					
25	George Bukator Park	3	4	Circaea quadrisulcata	a					

Site Number	Site Name	Polygon	Layer	Species	Abundance	Invasive	Old Growth	Plantation	Federal	Provincial
25	George Bukator Park	2	4	Cirsium vulgare	r					
25	George Bukator Park	5	4	Cirsium vulgare	o					
25	George Bukator Park	3	4	Convolvulus arvensis	o	i				
25	George Bukator Park	4	4	Dactylis glomerata	o					
25	George Bukator Park	5	4	Dactylis glomerata	o					
25	George Bukator Park	1	4	Daucus carota	a					
25	George Bukator Park	2	4	Daucus carota	a					
25	George Bukator Park	3	4	Daucus carota	a					
25	George Bukator Park	4	4	Daucus carota	a					
25	George Bukator Park	5	4	Daucus carota	a					
25	George Bukator Park	6	4	Daucus carota	o					
25	George Bukator Park	7	4	Daucus carota	o					
25	George Bukator Park	4	4	Dianthus armeria	o					
25	George Bukator Park	1	4	Dipsacus sylvestris	a					
25	George Bukator Park	2	4	Dipsacus sylvestris	a					
25	George Bukator Park	3	4	Dipsacus sylvestris	a					
25	George Bukator Park	6	4	Dipsacus sylvestris	o					
25	George Bukator Park	7	4	Dipsacus sylvestris	a					
25	George Bukator Park	4	4	Dipsacus sylvestris	o					
25	George Bukator Park	5	4	Eleocharis sp.	o					
25	George Bukator Park	2	4	Epipactis helleborine	r					
25	George Bukator Park	5	4	Equisetum sp.	o					
25	George Bukator Park	2	4	Erigeron annuus	a					
25	George Bukator Park	3	4	Erigeron annuus	a					
25	George Bukator Park	4	4	Erigeron annuus	o					
25	George Bukator Park	7	4	Erigeron annuus	o					
25	George Bukator Park	2	4	Fragaria sp.	o					
25	George Bukator Park	3	4	Fragaria sp.	a					
25	George Bukator Park	4	4	Fragaria sp.	o					
25	George Bukator Park	2	4	Geum canadense	o					
25	George Bukator Park	1	4	Hypericum perforatum	o	i				
25	George Bukator Park	3	4	Hypericum perforatum	o	i				
25	George Bukator Park	4	4	Hypericum perforatum	o	i				

Site Number	Site Name	Polygon	Layer	Species	Abundance	Invasive	Old Growth	Plantation	Federal	Provincial
25	George Bukator Park	5	4	Hypericum perforatum	o	i				
25	George Bukator Park	7	4	Hypericum perforatum	o	i				
25	George Bukator Park	2	4	Impatiens capensis	o					
25	George Bukator Park	5	4	Juncus tenuis	a					
25	George Bukator Park	2	4	Lepidium virginicum	o					
25	George Bukator Park	3	4	Lotus corniculatus	o					
25	George Bukator Park	5	4	Lotus corniculatus	a					
25	George Bukator Park	6	4	Lotus corniculatus	o					
25	George Bukator Park	2	4	Lysimachia ciliata	o	i				
25	George Bukator Park	3	4	Lysimachia ciliata	o	i				
25	George Bukator Park	1	4	Lythrum salicaria	o	ai				
25	George Bukator Park	3	4	Lythrum salicaria	o	ai				
25	George Bukator Park	4	4	Lythrum salicaria	o	ai				
25	George Bukator Park	5	4	Lythrum salicaria	a	ai				
25	George Bukator Park	6	4	Lythrum salicaria	a	ai				
25	George Bukator Park	7	4	Lythrum salicaria	o	ai				
25	George Bukator Park	4	4	Medicago lupulina	o					
25	George Bukator Park	2	4	Melilotus alba	o					
25	George Bukator Park	3	4	Melilotus alba	o					
25	George Bukator Park	4	4	Melilotus alba	a					
25	George Bukator Park	7	4	Melilotus alba	a					
25	George Bukator Park	3	4	Melilotus officinalis	r					
25	George Bukator Park	4	4	Melilotus officinalis	a					
25	George Bukator Park	5	4	Melilotus officinalis	a					
25	George Bukator Park	5	4	Monarda fistulosa	o					
25	George Bukator Park	2	4	Oenothera biennis	o					
25	George Bukator Park	1	4	Parthenocissus sp.	a					
25	George Bukator Park	2	4	Parthenocissus sp.	a					
25	George Bukator Park	3	4	Parthenocissus sp.	a					
25	George Bukator Park	5	4	Parthenocissus sp.	o					
25	George Bukator Park	6	4	Parthenocissus sp.	o					
25	George Bukator Park	2	4	Pastinaca sativa	o					
25	George Bukator Park	3	4	Pastinaca sativa	o					

Site Number	Site Name	Polygon	Layer	Species	Abundance	Invasive	Old Growth	Plantation	Federal	Provincial
25	George Bukator Park	5	4	Pastinaca sativa	o					
25	George Bukator Park	6	4	Pastinaca sativa	o					
25	George Bukator Park	7	4	Pastinaca sativa	o					
25	George Bukator Park	4	4	Phleum pratense	a					
25	George Bukator Park	5	4	Phleum pratense	o					
25	George Bukator Park	7	4	Phleum pratense	a					
25	George Bukator Park	1	4	Phragmites	o	ai				
25	George Bukator Park	5	4	Phragmites	a	ai				
25	George Bukator Park	6	4	Phragmites	a	ai				
25	George Bukator Park	7	4	Phragmites	a	ai				
25	George Bukator Park	2	4	Plantago lanceolata	o					
25	George Bukator Park	3	4	Plantago major	a					
25	George Bukator Park	4	4	Plantago major	a					
25	George Bukator Park	2	4	Potentilla recta	r					
25	George Bukator Park	2	4	Prunella vulgaris	o					
25	George Bukator Park	4	4	Prunella vulgaris	a					
25	George Bukator Park	5	4	Prunella vulgaris	a					
25	George Bukator Park	1	4	Rhus radicans	a					
25	George Bukator Park	2	4	Rhus radicans	a					
25	George Bukator Park	5	4	Rudbeckia hirta	o					
25	George Bukator Park	1	4	Rumex crispus	o					
25	George Bukator Park	5	4	Rumex crispus	o					
25	George Bukator Park	5	4	Sagittaria latifolia	r					
25	George Bukator Park	2	4	Saponaria officinalis	a	i				
25	George Bukator Park	5	4	Scirpus atrovirens	r					
25	George Bukator Park	5	4	Scirpus cyperinus	r					
25	George Bukator Park	2	4	Solanum dulcamara	o					
25	George Bukator Park	2	4	Solidago canadensis	a					
25	George Bukator Park	3	4	Solidago canadensis	a					
25	George Bukator Park	4	4	Solidago canadensis	a					
25	George Bukator Park	5	4	Solidago canadensis	a					
25	George Bukator Park	3	4	Solidago graminifolia	o					
25	George Bukator Park	5	4	Solidago graminifolia	o					

Site Number	Site Name	Polygon	Layer	Species	Abundance	Invasive	Old Growth	Plantation	Federal	Provincial
25	George Bukator Park	5	4	Solidago juncea	o					
25	George Bukator Park	7	4	Solidago juncea	a					
25	George Bukator Park	1	4	Solidago sp.	a					
25	George Bukator Park	1	4	Sonchus sp.	o					
25	George Bukator Park	5	4	Sonchus sp.	o					
25	George Bukator Park	2	4	Teucrium canadense	o					
25	George Bukator Park	3	4	Tovara virginiana	o					
25	George Bukator Park	3	4	Trifolium pratense	o					
25	George Bukator Park	4	4	Trifolium pratense	a					
25	George Bukator Park	5	4	Trifolium pratense	o					
25	George Bukator Park	1	4	Typha sp.	o					
25	George Bukator Park	2	4	Verbena urticifolia	a					
25	George Bukator Park	3	4	Vicia sp.	o					
25	George Bukator Park	5	4	Vicia sp.	o					
25	George Bukator Park	7	4	Vicia sp.	o					
25	George Bukator Park	3	4	Viola sp.	a					
25	George Bukator Park	1	4	Vitis sp.	a					
25	George Bukator Park	2	4	Vitis sp.	a					
25	George Bukator Park	5	4	Vitis sp.	a					
25	George Bukator Park	6	4	Vitis sp.	d					
25	George Bukator Park	7	4	Vitis sp.	a					

## George Bukator Park Disturbance Report

Site	Polygon	Disturbance / Extent	Total Score
25 George Bukator Park	1	Alien Species / Extent Of Alien Species	4
25 George Bukator Park	1	Beaver Activity / Extent Of Beaver Activity	0
25 George Bukator Park	1	Browse (e.g. Deer) / Extent Of Browse	0
25 George Bukator Park	1	Disease/Death Of Trees / Extent Of Disease/Death	0
25 George Bukator Park	1	Dumping (rubbish) / Extent Of Dumping	6
25 George Bukator Park	1	Earth Displacement / Extent Of Displacement	0
25 George Bukator Park	1	Fire / Extent Of Fire	0
25 George Bukator Park	1	Flooding (Pools & Puddling) / Extent Of Flooding	0
25 George Bukator Park	1	Gaps In Forest Canopy / Extent Of Gaps	0
25 George Bukator Park	1	Ice Damage / Extent Of Ice Damage	0
25 George Bukator Park	1	Intensity / Extent Of Logging	0
25 George Bukator Park	1	Livestock (Grazing) / Extent Of Livestock	0
25 George Bukator Park	1	Noise / Extent Of Noise	0
25 George Bukator Park	1	Planting (plantation) / Extent Of Planting	0
25 George Bukator Park	1	Recreational Use / Extent Of Recr. Use	0
25 George Bukator Park	1	Sugar Bush Operations / Extent Of Operations	0
25 George Bukator Park	1	Time Since Logging	0
25 George Bukator Park	1	Tracks And Trails / Extent Of Tracks/Trails	0
25 George Bukator Park	1	Wind Throw (blow Down) / Extent Of Wind Throw	0
25 George Bukator Park	2	Alien Species / Extent Of Alien Species	4
25 George Bukator Park	2	Beaver Activity / Extent Of Beaver Activity	0
25 George Bukator Park	2	Browse (e.g. Deer) / Extent Of Browse	0
25 George Bukator Park	2	Disease/Death Of Trees / Extent Of Disease/Death	0
25 George Bukator Park	2	Dumping (rubbish) / Extent Of Dumping	1
25 George Bukator Park	2	Earth Displacement / Extent Of Displacement	0
25 George Bukator Park	2	Fire / Extent Of Fire	0
25 George Bukator Park	2	Flooding (Pools & Puddling) / Extent Of Flooding	0
25 George Bukator Park	2	Gaps In Forest Canopy / Extent Of Gaps	0
25 George Bukator Park	2	Ice Damage / Extent Of Ice Damage	0
25 George Bukator Park	2	Intensity / Extent Of Logging	0
25 George Bukator Park	2	Livestock (Grazing) / Extent Of Livestock	0
25 George Bukator Park	2	Noise / Extent Of Noise	0
25 George Bukator Park	2	Planting (plantation) / Extent Of Planting	0
25 George Bukator Park	2	Recreational Use / Extent Of Recr. Use	4
25 George Bukator Park	2	Sugar Bush Operations / Extent Of Operations	0
25 George Bukator Park	2	Time Since Logging	0
25 George Bukator Park	2	Tracks And Trails / Extent Of Tracks/Trails	4
25 George Bukator Park	2	Wind Throw (blow Down) / Extent Of Wind Throw	0
25 George Bukator Park	3	Alien Species / Extent Of Alien Species	6
25 George Bukator Park	3	ATVs Rutted Trails	4
25 George Bukator Park	3	Beaver Activity / Extent Of Beaver Activity	0

Site	Polygon	Disturbance / Extent	Total Score
25 George Bukator Park	3	Browse (e.g. Deer) / Extent Of Browse	0
25 George Bukator Park	3	Disease/Death Of Trees / Extent Of Disease/Death	0
25 George Bukator Park	3	Dumping (rubbish) / Extent Of Dumping	0
25 George Bukator Park	3	Earth Displacement / Extent Of Displacement	0
25 George Bukator Park	3	Fire / Extent Of Fire	0
25 George Bukator Park	3	Flooding (Pools & Puddling) / Extent Of Flooding	0
25 George Bukator Park	3	Gaps In Forest Canopy / Extent Of Gaps	0
25 George Bukator Park	3	Ice Damage / Extent Of Ice Damage	0
25 George Bukator Park	3	Intensity / Extent Of Logging	0
25 George Bukator Park	3	Livestock (Grazing) / Extent Of Livestock	0
25 George Bukator Park	3	Noise / Extent Of Noise	0
25 George Bukator Park	3	Planting (plantation) / Extent Of Planting	0
25 George Bukator Park	3	Recreational Use / Extent Of Recr. Use	4
25 George Bukator Park	3	Sugar Bush Operations / Extent Of Operations	0
25 George Bukator Park	3	Time Since Logging	0
25 George Bukator Park	3	Tracks And Trails / Extent Of Tracks/Trails	4
25 George Bukator Park	3	Wind Throw (blow Down) / Extent Of Wind Throw	0
25 George Bukator Park	4	Alien Species / Extent Of Alien Species	4
25 George Bukator Park	4	Beaver Activity / Extent Of Beaver Activity	0
25 George Bukator Park	4	Browse (e.g. Deer) / Extent Of Browse	0
25 George Bukator Park	4	Disease/Death Of Trees / Extent Of Disease/Death	1
25 George Bukator Park	4	Dumping (rubbish) / Extent Of Dumping	9
25 George Bukator Park	4	Earth Displacement / Extent Of Displacement	0
25 George Bukator Park	4	Fire / Extent Of Fire	0
25 George Bukator Park	4	Flooding (Pools & Puddling) / Extent Of Flooding	0
25 George Bukator Park	4	Gaps In Forest Canopy / Extent Of Gaps	0
25 George Bukator Park	4	Ice Damage / Extent Of Ice Damage	0
25 George Bukator Park	4	Intensity / Extent Of Logging	0
25 George Bukator Park	4	Livestock (Grazing) / Extent Of Livestock	0
25 George Bukator Park	4	Noise / Extent Of Noise	0
25 George Bukator Park	4	Planting (plantation) / Extent Of Planting	0
25 George Bukator Park	4	Recreational Use / Extent Of Recr. Use	4
25 George Bukator Park	4	Sugar Bush Operations / Extent Of Operations	0
25 George Bukator Park	4	Time Since Logging	0
25 George Bukator Park	4	Tracks And Trails / Extent Of Tracks/Trails	4
25 George Bukator Park	4	Wind Throw (blow Down) / Extent Of Wind Throw	0
25 George Bukator Park	5	Alien Species / Extent Of Alien Species	4
25 George Bukator Park	5	ATVs Rutted Trails	6
25 George Bukator Park	5	Beaver Activity / Extent Of Beaver Activity	0
25 George Bukator Park	5	Browse (e.g. Deer) / Extent Of Browse	0
25 George Bukator Park	5	Disease/Death Of Trees / Extent Of Disease/Death	0
25 George Bukator Park	5	Dumping (rubbish) / Extent Of Dumping	2

Site	Polygon	Disturbance / Extent	Total Score
25 George Bukator Park	5	Earth Displacement / Extent Of Displacement	0
25 George Bukator Park	5	Fire / Extent Of Fire	0
25 George Bukator Park	5	Flooding (Pools & Puddling) / Extent Of Flooding	0
25 George Bukator Park	5	Gaps In Forest Canopy / Extent Of Gaps	0
25 George Bukator Park	5	Ice Damage / Extent Of Ice Damage	0
25 George Bukator Park	5	Intensity / Extent Of Logging	0
25 George Bukator Park	5	Livestock (Grazing) / Extent Of Livestock	0
25 George Bukator Park	5	Noise / Extent Of Noise	0
25 George Bukator Park	5	Planting (plantation) / Extent Of Planting	0
25 George Bukator Park	5	Recreational Use / Extent Of Recr. Use	4
25 George Bukator Park	5	Sugar Bush Operations / Extent Of Operations	0
25 George Bukator Park	5	Time Since Logging	0
25 George Bukator Park	5	Tracks And Trails / Extent Of Tracks/Trails	1
25 George Bukator Park	5	Wind Throw (blow Down) / Extent Of Wind Throw	0
25 George Bukator Park	6	Alien Species / Extent Of Alien Species	4
25 George Bukator Park	6	Beaver Activity / Extent Of Beaver Activity	0
25 George Bukator Park	6	Browse (e.g. Deer) / Extent Of Browse	0
25 George Bukator Park	6	Disease/Death Of Trees / Extent Of Disease/Death	1
25 George Bukator Park	6	Dumping (rubbish) / Extent Of Dumping	1
25 George Bukator Park	6	Earth Displacement / Extent Of Displacement	0
25 George Bukator Park	6	Fire / Extent Of Fire	0
25 George Bukator Park	6	Flooding (Pools & Puddling) / Extent Of Flooding	0
25 George Bukator Park	6	Gaps In Forest Canopy / Extent Of Gaps	0
25 George Bukator Park	6	Ice Damage / Extent Of Ice Damage	0
25 George Bukator Park	6	Intensity / Extent Of Logging	0
25 George Bukator Park	6	Livestock (Grazing) / Extent Of Livestock	0
25 George Bukator Park	6	Noise / Extent Of Noise	0
25 George Bukator Park	6	Planting (plantation) / Extent Of Planting	0
25 George Bukator Park	6	Recreational Use / Extent Of Recr. Use	1
25 George Bukator Park	6	Sugar Bush Operations / Extent Of Operations	0
25 George Bukator Park	6	Time Since Logging	0
25 George Bukator Park	6	Tracks And Trails / Extent Of Tracks/Trails	1
25 George Bukator Park	6	Wind Throw (blow Down) / Extent Of Wind Throw	0
25 George Bukator Park	7	Alien Species / Extent Of Alien Species	4
25 George Bukator Park	7	ATVs Rutted Trails	4
25 George Bukator Park	7	Beaver Activity / Extent Of Beaver Activity	0
25 George Bukator Park	7	Browse (e.g. Deer) / Extent Of Browse	0
25 George Bukator Park	7	Disease/Death Of Trees / Extent Of Disease/Death	0
25 George Bukator Park	7	Dumping (rubbish) / Extent Of Dumping	9
25 George Bukator Park	7	Earth Displacement / Extent Of Displacement	0
25 George Bukator Park	7	Fire / Extent Of Fire	0
25 George Bukator Park	7	Flooding (Pools & Puddling) / Extent Of Flooding	0



<b>Site</b>	<b>Polygon</b>	<b>Disturbance / Extent</b>	<b>Total Score</b>
25 George Bukator Park	7	Gaps In Forest Canopy / Extent Of Gaps	0
25 George Bukator Park	7	Ice Damage / Extent Of Ice Damage	0
25 George Bukator Park	7	Intensity / Extent Of Logging	0
25 George Bukator Park	7	Livestock (Grazing) / Extent Of Livestock	0
25 George Bukator Park	7	Noise / Extent Of Noise	0
25 George Bukator Park	7	Planting (plantation) / Extent Of Planting	0
25 George Bukator Park	7	Recreational Use / Extent Of Recr. Use	4
25 George Bukator Park	7	Sugar Bush Operations / Extent Of Operations	0
25 George Bukator Park	7	Time Since Logging	0
25 George Bukator Park	7	Tracks And Trails / Extent Of Tracks/Trails	4
25 George Bukator Park	7	Wind Throw (blow Down) / Extent Of Wind Throw	0