



23 - Montrose Business Park Woodlot

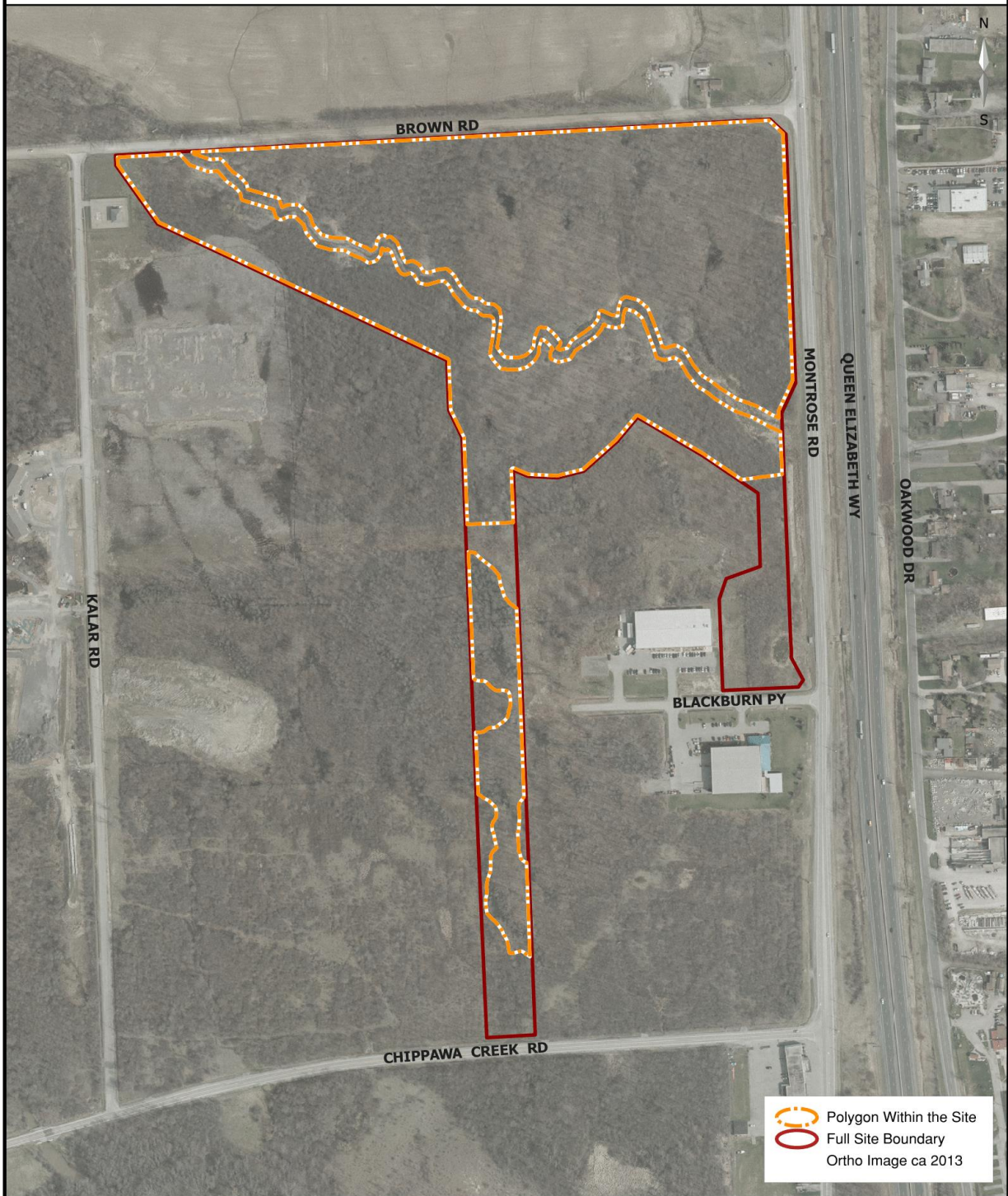


Table 23- Montrose Business Park Woodlot

Site 23
Montrose Business Park Woodlot

General Description This woodlot contains a variety of tree species, some shrubs as well as riparian species.

There is little evidence of dumping but there was a newly erected hunting blind.

Polygon 1 The woods are diverse with some impressive shagbark hickories and a good variety of tree species. Herbaceous species were less numerous on the survey conducted by the Niagara Falls Nature Club due to the lateness in the year of the survey. Closer to Montrose Road the park is denser with buckthorn and dogwood shrubs. The area around Warren Creek had diverse riparian plants such as Carex, Typha, and Polygonum species.

- Recommendations*
1. Buckthorn removal needs to continue. Priority for removal shall be in areas where there is greater impact on the existing native vegetation. After removal of invasive species has occurred, monitoring is necessary to ensure that these plants do not re-establish themselves. The techniques used for the removals shall be tailored to the invasive species being removed and be in accordance with industry standards.
 2. Once the paths through the woodlands at the Warren Woods subdivision are laid out, connections to this park and to Heartland Forest would provide an opportunity for nature appreciation and recreation for Niagara Falls residents.
 3. The Trees Unlimited Forestry Consultants Stewardship Plan Draft also recommends that the trails be connected. There is a management plan for this property between Warren Woods and the City of Niagara Falls.



Figure 1 – Canopy. Credit: NF Nature Club



Figure 2 – Hunting Blind. Credit: NF Nature Club

Montrose Business Park Woodlot Plant Species Inventory

Legend:

Layer: 1=Canopy(>10M), 2=Sub-Canopy, 3=Understory, 4=Ground Layer

Abundance: r=Rare, o=Occasional, a=Abundant, d=Dominant

Invasive Species: ai=Aggressive Invasive Species, i=Invasive Species

Old Growth: og=Old Growth

Plantation: p=Plantation Species

Federal Status: t=Threatened, v=Vulnerable, sp=Special Concern

Provincial Status: e=Endangered, t=Threatened, v=Vulnerable

Site Number	Site Name	Polygon	Layer	Species	Abundance	Invasive	Old Growth	Plantation	Federal	Provincial
23	Montrose Business Park Woodlot	1	1	Acer rubrum	o					
23	Montrose Business Park Woodlot	1	1	Acer saccharum	a					
23	Montrose Business Park Woodlot	1	1	Carya ovata	a					
23	Montrose Business Park Woodlot	1	1	Fagus grandifolia	a					
23	Montrose Business Park Woodlot	1	1	Fraxinus pennsylvanica	a					
23	Montrose Business Park Woodlot	1	1	Gleditsia triacanthos	r					
23	Montrose Business Park Woodlot	1	1	Malus sp.	r					
23	Montrose Business Park Woodlot	1	1	Prunus serotina	r					
23	Montrose Business Park Woodlot	1	1	Pyrus communis	r					
23	Montrose Business Park Woodlot	1	1	Quercus bicolor	o					
23	Montrose Business Park Woodlot	1	1	Quercus macrocarpa	r					
23	Montrose Business Park Woodlot	1	1	Quercus palustris	o					
23	Montrose Business Park Woodlot	1	1	Quercus rubra	o					
23	Montrose Business Park Woodlot	1	1	Salix sp.	o					
23	Montrose Business Park Woodlot	1	1	Tilia americana	o					
23	Montrose Business Park Woodlot	1	1	Tilia cordata	r					
23	Montrose Business Park Woodlot	1	2	Cephalanthus occidentalis	o					
23	Montrose Business Park Woodlot	1	2	Crataegus sp.	a					
23	Montrose Business Park Woodlot	1	2	Ostrya virginiana	a					
23	Montrose Business Park Woodlot	1	2	Rhamnus cathartica	d	ai				
23	Montrose Business Park Woodlot	1	2	Ulmus americana	o					
23	Montrose Business Park Woodlot	1	3	Berberis thunbergii	o	i				
23	Montrose Business Park Woodlot	1	3	Cornus racemosa	d					
23	Montrose Business Park Woodlot	1	3	Hamamelis virginiana	r					

Site Number	Site Name	Polygon	Layer	Species	Abundance	Invasive	Old Growth	Plantation	Federal	Provincial
23	Montrose Business Park Woodlot	1	3	Lonicera tatarica	a	i				
23	Montrose Business Park Woodlot	1	3	Ribes sp.	o					
23	Montrose Business Park Woodlot	1	3	Rosa sp.	a					
23	Montrose Business Park Woodlot	1	3	Rubus idaeus	a					
23	Montrose Business Park Woodlot	1	3	Rubus occidentalis	o					
23	Montrose Business Park Woodlot	1	3	Spiraea alba	o					
23	Montrose Business Park Woodlot	1	4	Agrimonia gryposepala	o					
23	Montrose Business Park Woodlot	1	4	Alliaria petiolata	o	ai				
23	Montrose Business Park Woodlot	1	4	Aster laterifloru	o					
23	Montrose Business Park Woodlot	1	4	Aster novae-angliae	o					
23	Montrose Business Park Woodlot	1	4	Aster simplex	o					
23	Montrose Business Park Woodlot	1	4	Bidens frondosa	o					
23	Montrose Business Park Woodlot	1	4	Boehmeria cylindrica	a					
23	Montrose Business Park Woodlot	1	4	Carex lupulina	a					
23	Montrose Business Park Woodlot	1	4	Epifagus virginiana	o					
23	Montrose Business Park Woodlot	1	4	Fragaria sp.	a					
23	Montrose Business Park Woodlot	1	4	Geranium maculatum	o					
23	Montrose Business Park Woodlot	1	4	Geum sp.	a					
23	Montrose Business Park Woodlot	1	4	Impatiens sp.	o					
23	Montrose Business Park Woodlot	1	4	Juncus effusus	o					
23	Montrose Business Park Woodlot	1	4	Lycopodium sp.	r					
23	Montrose Business Park Woodlot	1	4	Moss sp.	a					
23	Montrose Business Park Woodlot	1	4	Onoclea sensibilis	o					
23	Montrose Business Park Woodlot	1	4	Phalaris arundinacea	o	ai				
23	Montrose Business Park Woodlot	1	4	Pilea pumila	o					
23	Montrose Business Park Woodlot	1	4	Polygonum hydropiperoides	a					
23	Montrose Business Park Woodlot	1	4	Polygonum sagittatum	a					
23	Montrose Business Park Woodlot	1	4	Potentilla simplex	a					
23	Montrose Business Park Woodlot	1	4	Prunella vulgaris	o					
23	Montrose Business Park Woodlot	1	4	Rhus radicans	a					
23	Montrose Business Park Woodlot	1	4	Scirpus atrovirens	o					

Site Number	Site Name	Polygon	Layer	Species	Abundance	Invasive	Old Growth	Plantation	Federal	Provincial
23	Montrose Business Park Woodlot	1	4	Solidago canadensis	a					
23	Montrose Business Park Woodlot	1	4	Tovara virginiana	o					
23	Montrose Business Park Woodlot	1	4	Typha sp.	o					
23	Montrose Business Park Woodlot	1	4	Urtica dioica	o					
23	Montrose Business Park Woodlot	1	4	Vitis sp.	o					

Montrose Business Park Woodlot Disturbance Report

Site	Polygon	Disturbance / Extent	Total Score
23 Montrose Business Park Woodlot	1	Alien Species / Extent Of Alien Species	4
23 Montrose Business Park Woodlot	1	Beaver Activity / Extent Of Beaver Activity	0
23 Montrose Business Park Woodlot	1	Browse (e.g. Deer) / Extent Of Browse	1
23 Montrose Business Park Woodlot	1	Disease/Death Of Trees / Extent Of Disease/Death	1
23 Montrose Business Park Woodlot	1	Dumping (rubbish) / Extent Of Dumping	1
23 Montrose Business Park Woodlot	1	Earth Displacement / Extent Of Displacement	0
23 Montrose Business Park Woodlot	1	Fire / Extent Of Fire	0
23 Montrose Business Park Woodlot	1	Flooding (Pools & Puddling) / Extent Of Flooding	0
23 Montrose Business Park Woodlot	1	Gaps In Forest Canopy / Extent Of Gaps	4
23 Montrose Business Park Woodlot	1	Hunting Blind	1
23 Montrose Business Park Woodlot	1	Ice Damage / Extent Of Ice Damage	0
23 Montrose Business Park Woodlot	1	Intensity / Extent Of Logging	0
23 Montrose Business Park Woodlot	1	Livestock (Grazing) / Extent Of Livestock	0
23 Montrose Business Park Woodlot	1	Noise / Extent Of Noise	1
23 Montrose Business Park Woodlot	1	Planting (plantation) / Extent Of Planting	0
23 Montrose Business Park Woodlot	1	Recreational Use / Extent Of Recr. Use	1
23 Montrose Business Park Woodlot	1	Sugar Bush Operations / Extent Of Operations	0
23 Montrose Business Park Woodlot	1	Time Since Logging	0
23 Montrose Business Park Woodlot	1	Tracks And Trails / Extent Of Tracks/Trails	1
23 Montrose Business Park Woodlot	1	Wind Throw (blow Down) / Extent Of Wind Throw	0