

2 - Walker Greenspace

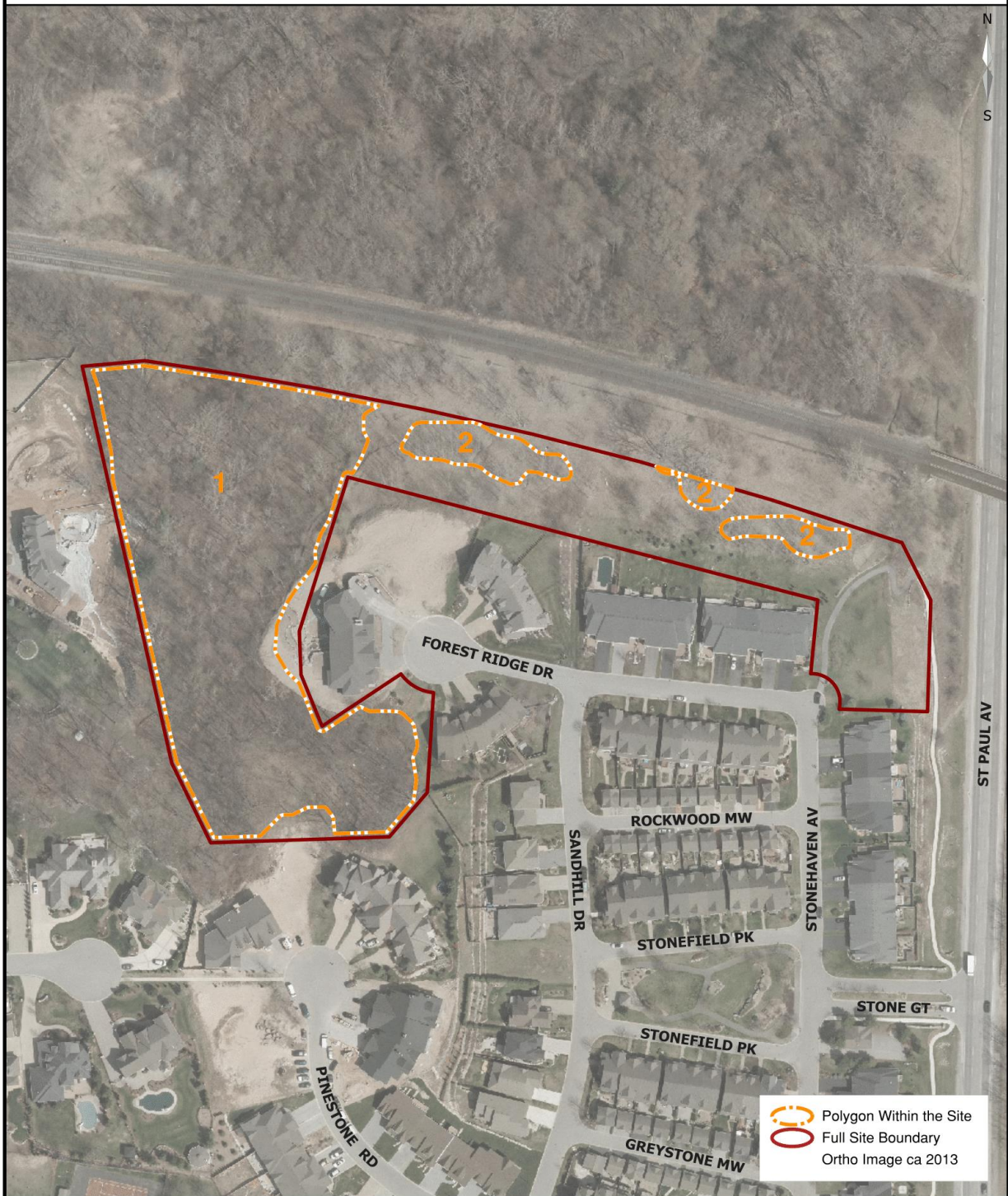


Table 2- Walker Greenspace

Site 2 Walker Greenspace

General Description

Walker Greenspace is located north of the housing development along Forest Ridge Drive and south of the main VIA-GO train railway right-of-way between Toronto and Niagara Falls. Before development of the Walker subdivision, a commercial sandpit operated at this location. In a previous era, an aboriginal ossuary (burial site) was located here. A monument recognizing the ossuary stands on the west side of St Paul Ave at the entrance to the subdivision.

Walker Greenspace (Calaguiro Park) is mentioned in the old-growth forest survey conducted in 2003 by the Bert Miller Nature Club. (See page 16 of

<http://www.bertmillernatureclub.org/assets/docs/library/OLD%20GROWTH%20FOREST%20SURVEY%20OCTOBER%202003.pdf>)

Below is the description from page 50 of the report:

Calaguiro Park Grove

The Calaguiro Park old growth grove is in a small city park on the edge of a new housing development, Calaguiro Estates, on the outer zone of Niagara Falls' suburban area. It is only about 1500 feet east of the Bruce Trail (Firemen's Park) Grove.

It is a 4 -acre secondary old growth grove, containing scattered original old growth trees within it. Although small in size, the grove is notable for the large size of its trees and for the presence of what is tentatively identified as a large Shumard oak.

The dominant old growth is white oak that is 29 inches in diameter, and 180 years old. Additional old growth trees were noted:

- Black oak up to 45 inch diameter, 180 years old. Two annual ring counts obtained
- Shumard oak, 40 inch diameter, 180 years old
- Tulip tree, 40 inch diameter, 150 years old

Non-old growth includes the following:

- 43 inch cottonwood, 100 years old
- 75 year old white pine, sassafras, butternut, black cherry, paper birch and basswood

Although the grove now appears safe from development as it is in a park, it receives some urban vandalism through injury of individual trees by local youths and erosion by motor bike tracks.

Polygon 1

Consists of the old growth forest documented by the Bruce Miller Nature Club. It is a diverse mature forest community. Public access to the property is very limited due to the fact that it backs onto the private yards of residences in the Walker and Calaguero subdivisions. Where the greenspace fronts onto Forest Ridge Dr, steep slopes also limit accessibility.

Polygon 2

Is a linear greenspace running along the southern boundary of the railway right-of-way and north of the homes along Forest Ridge Drive. A berm runs east-west through the middle of the greenspace. Neighbours have encroached on the area south of the berm with cut lawns and flower gardens planted. The portion north of the berm has largely been left natural and consists of a semi-open young community of pioneer species such as willows. Some encroachment has occurred, such as a vegetable garden planted by one of the residents.

Recommendations

1. Due to the high ecological value of Polygon 1, neighbours should be educated about the park and local stewardship encouraged. Invasive species sometimes become a problem when neighbours plant non-native plants in their yards.
2. Neighbour encroachments shall be removed from the woodland. In addition to being illegal under the City parks by-law, these encroachments degrade the quality of the natural habitat and may negatively impact the public use of the lands.
3. Removal of invasive species should be done. Priority for removal shall be in areas where there is greater impact on the existing native vegetation. After removal of invasive species has occurred, monitoring is necessary to ensure that these plants do not re-establish themselves. The techniques used for the removals shall be tailored to the invasive species being removed and be in accordance with industry standards.
4. To raise awareness of the woodland features and functions, informative signage should be put on site. Signage The signage should be installed near a main trail or access point to the woodland.
5. Some pedestrian access to the old growth area could be provided with signage to explain the significance of the site.



Figure 1- Walker Greenspace. Credit: NF Nature Club

Walker Greenspace Plant Species Inventory

Legend:

Layer: 1=Canopy(>10M), 2=Sub-Canopy, 3=Understory, 4=Ground Layer

Abundance: r=Rare, o=Occasional, a=Abundant, d=Dominant

Invasive Species: ai=Aggressive Invasive Species, i=Invasive Species

Old Growth: og=Old Growth

Plantation: p=Plantation Species

Federal Status: t=Threatened, v=Vulnerable, sp=Special Concern

Provincial Status: e=Endangered, t=Threatened, v=Vulnerable

Site Number	Site Name	Polygon	Layer	Species	Abundance	Invasive	Old Growth	Plantation	Federal	Provincial
2	Walker Greenspace	2	1	Acer negundo	a					
2	Walker Greenspace	1	1	Acer rubrum	o					
2	Walker Greenspace	2	1	Acer saccharum	r					
2	Walker Greenspace	1	1	Betula papyrifera	r					
2	Walker Greenspace	2	1	Carya sp.	r					
2	Walker Greenspace	2	1	Fraxinus pennsylvanica	r					
2	Walker Greenspace	2	1	Juglan nigra	o					
2	Walker Greenspace	1	1	Liriodendron tulipifera	o					
2	Walker Greenspace	2	1	Picea sp.	r					
2	Walker Greenspace	1	1	Pinus strobus	r					
2	Walker Greenspace	2	1	Populus deltoides	d					
2	Walker Greenspace	1	1	Populus grandidentata	r					
2	Walker Greenspace	2	1	Populus tremuloides	d					
2	Walker Greenspace	1	1	Prunus serotina	o					
2	Walker Greenspace	2	1	Quercus alba	r					
2	Walker Greenspace	1	1	Quercus alba	o		og			
2	Walker Greenspace	1	1	Quercus macrocarpa	r					
2	Walker Greenspace	2	1	Quercus rubra	r					
2	Walker Greenspace	1	1	Quercus rubra	a					
2	Walker Greenspace	2	1	Quercus sp.	r					
2	Walker Greenspace	1	1	Quercus velutina	r		og			
2	Walker Greenspace	2	1	Robinia pseudoacacia	o					
2	Walker Greenspace	1	1	Sassafras albidum	d					
2	Walker Greenspace	1	2	Rhamnus cathartica	o	ai				
2	Walker Greenspace	2	2	Rhamnus cathartica	o	ai				

Site Number	Site Name	Polygon	Layer	Species	Abundance	Invasive	Old Growth	Plantation	Federal	Provincial
2	Walker Greenspace	2	2	Salix sp.	d					
2	Walker Greenspace	1	2	Sassafras albidum	a					
2	Walker Greenspace	1	3	Cornus alternifolia	r					
2	Walker Greenspace	1	3	Cornus racemosa	a					
2	Walker Greenspace	2	3	Cornus racemosa	o					
2	Walker Greenspace	1	3	Elaeagnus umbellata	r	i				
2	Walker Greenspace	2	3	Elaeagnus umbellata	o	i				
2	Walker Greenspace	1	3	Hamamelis virginiana	r					
2	Walker Greenspace	1	3	Lindera benzoin	a					
2	Walker Greenspace	2	3	Lonicera tatarica	o	i				
2	Walker Greenspace	1	3	Rosa blanda	o					
2	Walker Greenspace	1	4	Alliaria petiolata	r	ai				
2	Walker Greenspace	1	4	Aralia sp.	r					
2	Walker Greenspace	2	4	Asclepias syriaca	o					
2	Walker Greenspace	2	4	Chrysanthemum leucanthemum	o					
2	Walker Greenspace	2	4	Desmodium canadense	o					
2	Walker Greenspace	1	4	Desmodium glutinosum	o					
2	Walker Greenspace	1	4	Equisetum sp.	o					
2	Walker Greenspace	2	4	Equisetum sp.	o					
2	Walker Greenspace	1	4	Geranium maculatum	o					
2	Walker Greenspace	1	4	Maianthemum canadense	a					
2	Walker Greenspace	1	4	Onclea sensibilis	a					
2	Walker Greenspace	1	4	Osmunda claytoniana	a					
2	Walker Greenspace	2	4	Parthenocissus sp.	o					
2	Walker Greenspace	2	4	Phragmites	o	ai				
2	Walker Greenspace	1	4	Podophyllum peltatum	a					
2	Walker Greenspace	1	4	Prenanthes sp.	r					
2	Walker Greenspace	1	4	Pteridium aquilinum	o					
2	Walker Greenspace	1	4	Rhus radicans	a					
2	Walker Greenspace	2	4	Rhus radicans	a					
2	Walker Greenspace	1	4	Smilacina racemosa	a					
2	Walker Greenspace	1	4	Solidago sp.	a					
2	Walker Greenspace	2	4	Solidago sp.	o					

Site Number	Site Name	Polygon	Layer	Species	Abundance	Invasive	Old Growth	Plantation	Federal	Provincial
2	Walker Greenspace	1	4	Thalictrum dioicum	o					
2	Walker Greenspace	1	4	Trillium grandiflorium	o					
2	Walker Greenspace	1	4	Vitis sp.	a					

Walker Greenspace Disturbance Report

Site	Polygon	Disturbance / Extent	Total Score
02 Walker Green Space	1	Alien Species / Extent Of Alien Species	1
02 Walker Green Space	1	Beaver Activity / Extent Of Beaver Activity	0
02 Walker Green Space	1	Browse (e.g. Deer) / Extent Of Browse	0
02 Walker Green Space	1	Disease/Death Of Trees / Extent Of Disease/Death	0
02 Walker Green Space	1	Dumping (rubbish) / Extent Of Dumping	1
02 Walker Green Space	1	Earth Displacement / Extent Of Displacement	0
02 Walker Green Space	1	Encroachment	2
02 Walker Green Space	1	Fire / Extent Of Fire	0
02 Walker Green Space	1	Flooding (Pools & Puddling) / Extent Of Flooding	0
02 Walker Green Space	1	Gaps In Forest Canopy / Extent Of Gaps	0
02 Walker Green Space	1	Ice Damage / Extent Of Ice Damage	0
02 Walker Green Space	1	Intensity / Extent Of Logging	0
02 Walker Green Space	1	Livestock (Grazing) / Extent Of Livestock	0
02 Walker Green Space	1	Noise / Extent Of Noise	0
02 Walker Green Space	1	Planting (plantation) / Extent Of Planting	0
02 Walker Green Space	1	Recreational Use / Extent Of Recr. Use	1
02 Walker Green Space	1	Sugar Bush Operations / Extent Of Operations	0
02 Walker Green Space	1	Time Since Logging	0
02 Walker Green Space	1	Tracks And Trails / Extent Of Tracks/Trails	1
02 Walker Green Space	1	Wind Throw (blow Down) / Extent Of Wind Throw	0
02 Walker Green Space	2	Alien Species / Extent Of Alien Species	4
02 Walker Green Space	2	Beaver Activity / Extent Of Beaver Activity	0
02 Walker Green Space	2	Browse (e.g. Deer) / Extent Of Browse	0
02 Walker Green Space	2	Disease/Death Of Trees / Extent Of Disease/Death	0
02 Walker Green Space	2	Dumping (rubbish) / Extent Of Dumping	1
02 Walker Green Space	2	Earth Displacement / Extent Of Displacement	0
02 Walker Green Space	2	Encroachment	6
02 Walker Green Space	2	Fire / Extent Of Fire	0
02 Walker Green Space	2	Flooding (Pools & Puddling) / Extent Of Flooding	0
02 Walker Green Space	2	Gaps In Forest Canopy / Extent Of Gaps	0
02 Walker Green Space	2	Ice Damage / Extent Of Ice Damage	0
02 Walker Green Space	2	Intensity / Extent Of Logging	0
02 Walker Green Space	2	Livestock (Grazing) / Extent Of Livestock	0
02 Walker Green Space	2	Noise / Extent Of Noise	0
02 Walker Green Space	2	Planting (plantation) / Extent Of Planting	0
02 Walker Green Space	2	Recreational Use / Extent Of Recr. Use	1
02 Walker Green Space	2	Sugar Bush Operations / Extent Of Operations	0
02 Walker Green Space	2	Time Since Logging	0
02 Walker Green Space	2	Tracks And Trails / Extent Of Tracks/Trails	1
02 Walker Green Space	2	Wind Throw (blow Down) / Extent Of Wind Throw	0