

# 19 - Firemen's Park

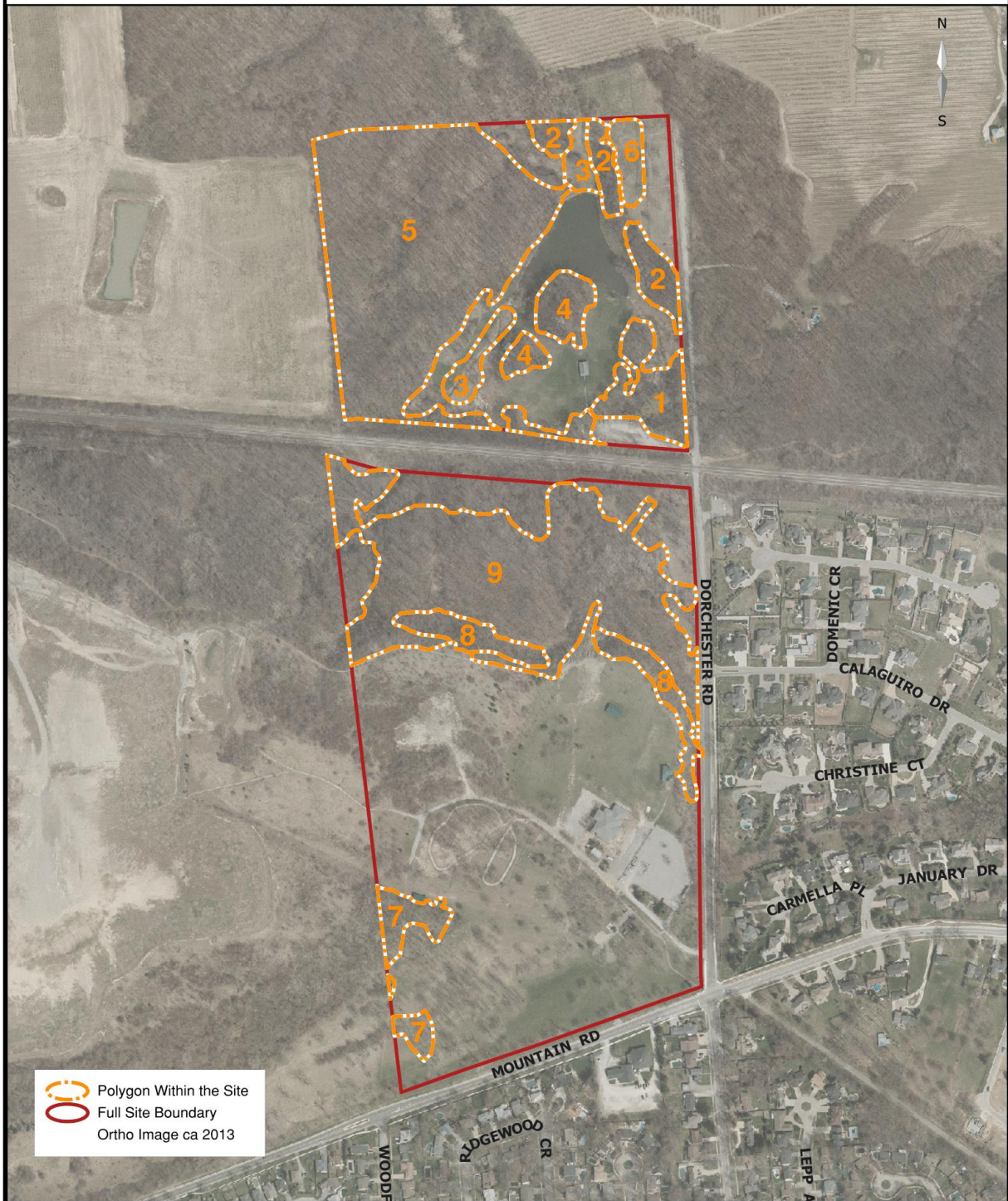


Table 19- Firemen's Park

## Site 19 Firemen's Park

### *General Description*

Firemen's Park contains a large man-made pond and a dog park among other attractions on site. Woodlands, thickets, plantations, forested and open spaces are present. Some dogwoods were flowering in 2007 although fewer blossoms were present compared to years ago. There are some very large tulip trees on site. American chestnut (or hybrid) was planted and is doing very well; it is over 15 feet tall and at least 5 inches in diameter.

### *Polygon 1*

Polygon 1 consists of the area north of the parking lot and railway right-of-way and west of Dorchester Rd. It consists of a healthy middle-aged woodlot with a fairly dense understory of shrubs and herbs. Limestone outcrops mark the edge of the Niagara escarpment. Some dumping exists along the edge of the parking lot. There are a number of non-native species such as sycamore maple, pear and weeping willow, but also valuable native species such as black and white walnut.

Buckthorn, an alien invasive plant species, is abundant and widespread.

Moderate local dumping is occurring along the southern edge of the polygon where the woodlot borders the parking lot. This consists of concrete blocks, yard waste and some rubbish. This area is a relatively steep portion of the Niagara Escarpment and as a result there is relatively limited disturbance other than dumping.

### *Polygon 2*

Polygon 2 consists of three small wooded areas north of polygon 1. Low wetland areas separate polygon 2 from polygon 1. In varying density across the polygon sections native species (such as flowering dogwood, black cherry, red and white oak) and non-native species are present. Buckthorn, an alien invasive plant species, is abundant and widespread.

There was some dumping along the edge of Dorchester Rd. Additionally the section of polygon 2 along Dorchester Rd. is basically an overgrown hedge row while the most western section has a younger forest.

### *Polygon 3*

Polygon 3 is composed of 2 wetland areas one to the north and the other to the south west of the pond. Wetlands-This includes all areas along streams and leading off the ponds.

Phragmites is increasing in both land coverage and in density.

People were observed transferring a bucket of pond material

containing tadpoles and a non-native aquatic plant into the pond (June 10, 2014). Signage to discourage removal or additions to the aquatic environment would be beneficial from an environmental standpoint.

#### *Polygon 4*

Polygon 4 consists of the two forested hillocks to the south of the pond. These are mature forest areas with excellent specimens of a wide range of Carolinian trees. The under story of shrubs and herbaceous plants is also very healthy.

The steep slopes of the hills are subject to erosion. A large amount of foot traffic on the hills has contributed to the erosion. However the underbrush is generally healthy and able to repair most of the damage.

#### *Polygon 5*

Polygon 5 is the large forested area in the north-western part of the park. It consists of a series of dry ridges and moist valleys so there is a broad range of species found here. Although there is a network of trails through this forest, there are only minor human disturbances, a healthy forest ecosystem, and less invasive species than in other parts of the park. The fact that this forest is fairly extensive means that there are interior areas that are less subject to disturbances, and points to the value of preserving forests that have larger interior areas. Some of the trees in this polygon could be considered "old growth;" certainly as whole the polygon is a mature forest.

Some erosion along the slopes of the main east-west trail.

#### *Polygon 6*

This area was once an open field adjacent to an old parking lot at the north-east corner of the park that has since been allowed to naturalize and is starting to revert to forest. Some mowing continues in order to create grassed paths through the area. In the northern most part of the polygon, there are a number of planted memorial trees. Unfortunately, some of these are non-natives such as Norway maple. In the southern portion, the neighbouring trees and shrubs are providing the seed source for succession to a forest to proceed. It is worthy to note that butternut (white walnut) appears to be one of the species that is starting to grow here.

#### *Polygon 7*

Polygon 7 represents the south-western portion where the underbrush has not been removed. The shrub layer is very thick and in many areas, grape vines cover the ground and shrub layer. The tree layer is dominated by black locust and cottonwood. A few trails provide access through this area which is otherwise difficult to penetrate.

A few trails provide access through this area which has been allowed to naturalize. In most areas the underbrush is too thick to penetrate. As often occurs in a pioneer community, a large number of non-native species are present such as garlic mustard, honeysuckle and black locust.

### *Polygon 8*

Polygon 8 is the area north of the dog park and west of the band shell. It is similar to polygon 7 with the mowed area near the band shell transitioning to an area further west that has been allowed to naturalize. A number of memorial trees exist within the mowed area as well as the area that is being naturalized. Like polygon 6, it is unfortunate that some of these are non-native trees. A large number of shrub species are growing up in the naturalized

*Ailanthus altissima* (Tree of Heaven) is a non-native species which can be highly invasive. It has become abundant in this polygon and its removal should be considered.

### *Polygon 9*

Polygon 9 is the forested area north of the escarpment and south of the railway tracks. The Bruce Trail (Laura Secord Trail) runs east-west through this section of the park. For the most part the trail is in good condition with some rutting caused by ATVs. A small second trail runs south from the Bruce Trail and climbs the escarpment near the band shell. The forest here is dominated by mature black walnut trees with an understory of young sassafras, tulip, and hickory trees. Overall the forest is in good condition except for a large number of dead or dying ash trees. The presence of healthy flowering dogwood trees along the escarpment edge is worthy of note.

Oriental or Asian Bittersweet was found in one area but is spreading rapidly there and if left undisturbed will spread to other areas of the park. Phragmites is also spreading. ATVs are a problem at times as they make the trails wider and more rutted.

### *Recommendations*

1. All-terrain vehicle (ATV) barriers should be installed strategically to deter this illegal activity. Careful considerations should be made to the location of the barriers to insure that ATVs aren't simply moved to a different part of the woodland. Special signage should be part of these barriers that inform ATVer's of the negative impact they are doing to the natural environment and the potential harm they could cause to park users.
2. Removal of invasive species should be done. Priority for removal shall be in areas where there is greater impact on the existing native vegetation. After removal of invasive species has occurred, monitoring is necessary to ensure that these plants do not re-establish themselves. The techniques used for the removals shall be tailored to the invasive species being removed and be in accordance with industry standards.
3. The existing trails require improvements to address drainage issues. They shall be examined and the cause of these drainage issues should be determined so that the repairs fully address the issues. Drainage culverts and boardwalks are commonly used. Importing new topsoil into the woodlands should be done sparingly to minimize the risk of introducing invasive species from a foreign seed bank.
4. Hazard trees shall be dropped where there is the likelihood



that they may cause harm to people and/or private/public property. These trees shall not be removed from the woodland and will be allowed to decompose on the woodland floor. Not all dead trees are hazard trees. If the tree does not pose a risk to causing harm to people and/or property it should be left as is. These trees can become important habitat to many species of wildlife.

5. To raise awareness of the woodland features and functions, informative signage should be put on site. The signage should be installed near a main trail or access point to the woodland.
6. Continue to allow naturalization in areas such as polygons 6, 7 and 8 in order to increase the amount of interior forest. Plant native trees within these polygons to encourage the development of a healthier and more diverse forest than would develop on its own.



**Figure 1: Trail through Firemen's Park, Credit: J. Sankey**



Figure 2: *Juglans cinerea* (White Walnut), Credit: J. Sankey

## Firemen's Park Plant Species Inventory

Legend:

Layer: 1=Canopy(>10M), 2=Sub-Canopy, 3=Understory, 4=Ground Layer

Abundance: r=Rare, o=Occasional, a=Abundant, d=Dominant

Invasive Species: ai=Aggressive Invasive Species, i=Invasive Species

Old Growth: og=Old Growth

Plantation: p=Plantation Species

Federal Status: t=Threatened, v=Vulnerable, sp=Special Concern

Provincial Status: e=Endangered, t=Threatened, v=Vulnerable

Site Number	Site Name	Polygon	Layer	Species	Abundance	Invasive	Old Growth	Plantation	Federal	Provincial
19	Firemen's Park	1	1	Acer negundo	a					
19	Firemen's Park	1	1	Acer pseudoplatanus	r					
19	Firemen's Park	5	1	Acer rubrum	o					
19	Firemen's Park	1	1	Acer saccharinum	a					
19	Firemen's Park	4	1	Acer saccharum	o					
19	Firemen's Park	5	1	Acer saccharum	a					
19	Firemen's Park	9	1	Acer saccharum	o					
19	Firemen's Park	5	1	Carya cordiformis	o					
19	Firemen's Park	4	1	Carya ovata	r					
19	Firemen's Park	5	1	Carya ovata	o					
19	Firemen's Park	1	1	Carya ovata	r					
19	Firemen's Park	4	1	Fagus grandifolia	r					
19	Firemen's Park	5	1	Fagus grandifolia	a					
19	Firemen's Park	2	1	Fraxinus sp.	a					
19	Firemen's Park	3	1	Fraxinus sp.	r					
19	Firemen's Park	9	1	Fraxinus sp.	a					
19	Firemen's Park	1	1	Fraxinus sp.	a					
19	Firemen's Park	1	1	Gleditsia triacanthos	r					
19	Firemen's Park	7	1	Juglan nigra	o					
19	Firemen's Park	9	1	Juglan nigra	d					
19	Firemen's Park	5	1	Juglans cinerea	r					e
19	Firemen's Park	1	1	Juglans cinerea	r					e
19	Firemen's Park	2	1	Juglans nigra	a					
19	Firemen's Park	4	1	Juglans nigra	a					
19	Firemen's Park	5	1	Juglans nigra	a					

Site Number	Site Name	Polygon	Layer	Species	Abundance	Invasive	Old Growth	Plantation	Federal	Provincial
19	Firemen's Park	1	1	Juglans nigra	o					
19	Firemen's Park	5	1	Liriodendron tulipifera	a		og			
19	Firemen's Park	9	1	Liriodendron tulipifera	r					
19	Firemen's Park	5	1	Ostrya virginiana	o					
19	Firemen's Park	8	1	Picea sp.	o					
19	Firemen's Park	2	1	Populus deltoides	a					
19	Firemen's Park	3	1	Populus deltoides	r					
19	Firemen's Park	7	1	Populus deltoides	a					
19	Firemen's Park	9	1	Populus deltoides	o					
19	Firemen's Park	1	1	Populus deltoides	a					
19	Firemen's Park	9	1	Populus grandidentata	r					
19	Firemen's Park	9	1	Populus tremuloides	r					
19	Firemen's Park	1	1	Populus tremuloides	o					
19	Firemen's Park	2	1	Prunus avium	a					
19	Firemen's Park	5	1	Prunus avium	o					
19	Firemen's Park	2	1	Prunus serotina	o					
19	Firemen's Park	4	1	Prunus serotina	a		og			
19	Firemen's Park	5	1	Prunus serotina	o					
19	Firemen's Park	9	1	Prunus serotina	o					
19	Firemen's Park	9	1	Pyrus communis	r					
19	Firemen's Park	2	1	Quercus alba	r					
19	Firemen's Park	4	1	Quercus alba	r					
19	Firemen's Park	5	1	Quercus alba	o		og			
19	Firemen's Park	5	1	Quercus macrocarpa	r					
19	Firemen's Park	5	1	Quercus palustris	r					
19	Firemen's Park	9	1	Quercus palustris	r					
19	Firemen's Park	2	1	Quercus rubra	r					
19	Firemen's Park	4	1	Quercus rubra	d		og			
19	Firemen's Park	5	1	Quercus rubra	a		og			
19	Firemen's Park	9	1	Quercus rubra	o					
19	Firemen's Park	7	1	Robinia pseudoacacia	a					
19	Firemen's Park	8	1	Robinia pseudoacacia	d					
19	Firemen's Park	9	1	Robinia pseudoacacia	a					



Site Number	Site Name	Polygon	Layer	Species	Abundance	Invasive	Old Growth	Plantation	Federal	Provincial
19	Firemen's Park	1	1	Salix babylonica	r					
19	Firemen's Park	5	1	Salix nigra	r					
19	Firemen's Park	5	1	Sassafras albidum	o					
19	Firemen's Park	2	1	Tilia americana	r					
19	Firemen's Park	4	1	Tilia americana	o					
19	Firemen's Park	5	1	Tilia americana	o					
19	Firemen's Park	2	2	Acer negundo	o					
19	Firemen's Park	4	2	Acer negundo	r					
19	Firemen's Park	7	2	Acer negundo	o					
19	Firemen's Park	8	2	Acer negundo	a					
19	Firemen's Park	9	2	Acer negundo	r					
19	Firemen's Park	8	2	Acer platanoides	o	i				
19	Firemen's Park	8	2	Acer rubrum	r					
19	Firemen's Park	3	2	Acer saccharinum	r					
19	Firemen's Park	8	2	Acer saccharinum	o					
19	Firemen's Park	8	2	Acer saccharum	r					
19	Firemen's Park	8	2	Ailanthus altissima	a					
19	Firemen's Park	8	2	Betula pendula	r					
19	Firemen's Park	4	2	Carpinus caroliniana	o					
19	Firemen's Park	5	2	Carpinus caroliniana	o					
19	Firemen's Park	9	2	Carya cordiformis	o					
19	Firemen's Park	9	2	Carya ovata	o					
19	Firemen's Park	8	2	Castanea sp.	r					
19	Firemen's Park	1	2	Cornus alternifolia	o					
19	Firemen's Park	2	2	Cornus alternifolia	o					
19	Firemen's Park	4	2	Cornus alternifolia	r					
19	Firemen's Park	9	2	Cornus alternifolia	r					
19	Firemen's Park	5	2	Cornus florida	o					e
19	Firemen's Park	9	2	Cornus florida	r					e
19	Firemen's Park	7	2	Crataegus sp.	o					
19	Firemen's Park	9	2	Crataegus sp.	r					
19	Firemen's Park	8	2	Elaeagnus umbellata	o	i				
19	Firemen's Park	3	2	Fraxinus sp.	d					

Site Number	Site Name	Polygon	Layer	Species	Abundance	Invasive	Old Growth	Plantation	Federal	Provincial
19	Firemen's Park	4	2	Fraxinus sp.	o					
19	Firemen's Park	5	2	Fraxinus sp.	o					
19	Firemen's Park	7	2	Fraxinus sp.	o					
19	Firemen's Park	8	2	Fraxinus sp.	o					
19	Firemen's Park	2	2	Hamamelis virginiana	r					
19	Firemen's Park	5	2	Hamamelis virginiana	d					
19	Firemen's Park	4	2	Hamamelis virginiana	o					
19	Firemen's Park	8	2	Juglan nigra	o					
19	Firemen's Park	2	2	Juglans cinerea	r					e
19	Firemen's Park	4	2	Juglans cinerea	r					e
19	Firemen's Park	6	2	Juglans cinerea	a					e
19	Firemen's Park	7	2	Juglans cinerea	r					e
19	Firemen's Park	3	2	Juglans cinerea	r					e
19	Firemen's Park	2	2	Juglans nigra	a					
19	Firemen's Park	3	2	Juglans nigra	o					
19	Firemen's Park	6	2	Juglans nigra	d					
19	Firemen's Park	4	2	Lindera benzoin	a					
19	Firemen's Park	3	2	Liriodendron tulipifera	o					
19	Firemen's Park	8	2	Liriodendron tulipifera	r					
19	Firemen's Park	9	2	Liriodendron tulipifera	o					
19	Firemen's Park	7	2	Malus sp.	o					
19	Firemen's Park	4	2	Morus alba	r					
19	Firemen's Park	7	2	Morus alba	o					
19	Firemen's Park	8	2	Pinus strobus	r					
19	Firemen's Park	8	2	Platanus occidentalis	r					
19	Firemen's Park	8	2	Populus deltoides	o					
19	Firemen's Park	3	2	Populus grandidentata	o					
19	Firemen's Park	8	2	Populus tremuloides	r					
19	Firemen's Park	4	2	Prunus Americana	r					
19	Firemen's Park	4	2	Prunus avium	r					
19	Firemen's Park	6	2	Prunus avium	r					
19	Firemen's Park	8	2	Prunus avium	o					
19	Firemen's Park	8	2	Prunus pensylvanica	r					

Site Number	Site Name	Polygon	Layer	Species	Abundance	Invasive	Old Growth	Plantation	Federal	Provincial
19	Firemen's Park	1	2	Prunus virginiana	r					
19	Firemen's Park	2	2	Prunus virginiana	r					
19	Firemen's Park	1	2	Pyrus communis	r					
19	Firemen's Park	4	2	Pyrus communis	r					
19	Firemen's Park	8	2	Pyrus communis	o					
19	Firemen's Park	8	2	Quercus palustris	r					
19	Firemen's Park	8	2	Quercus rubra	r					
19	Firemen's Park	1	2	Rhamnus cathartica	a	ai				
19	Firemen's Park	2	2	Rhamnus cathartica	a	ai				
19	Firemen's Park	3	2	Rhamnus cathartica	r	ai				
19	Firemen's Park	4	2	Rhamnus cathartica	a	ai				
19	Firemen's Park	5	2	Rhamnus cathartica	o	ai				
19	Firemen's Park	7	2	Rhamnus cathartica	d	ai				
19	Firemen's Park	8	2	Rhamnus cathartica	o	ai				
19	Firemen's Park	2	2	Rhus typhina	a					
19	Firemen's Park	4	2	Rhus typhina	o					
19	Firemen's Park	7	2	Rhus typhina	a					
19	Firemen's Park	9	2	Rhus typhina	o					
19	Firemen's Park	8	2	Robinia pseudoacacia	d					
19	Firemen's Park	2	2	Sassafras albidum	r					
19	Firemen's Park	4	2	Sassafras albidum	a					
19	Firemen's Park	5	2	Sassafras albidum	a					
19	Firemen's Park	9	2	Sassafras albidum	a					
19	Firemen's Park	1	2	Syringa vulgaris	o	i				
19	Firemen's Park	9	2	Tilia americana	r					
19	Firemen's Park	3	3	Acer rubrum	o					
19	Firemen's Park	4	3	Carya ovata	o					
19	Firemen's Park	5	3	Cornus alternifolia	o					
19	Firemen's Park	2	3	Cornus florida	r					e
19	Firemen's Park	2	3	Cornus racemosa	a					
19	Firemen's Park	4	3	Cornus racemosa	a					
19	Firemen's Park	5	3	Cornus racemosa	a					
19	Firemen's Park	7	3	Cornus racemosa	d					

Site Number	Site Name	Polygon	Layer	Species	Abundance	Invasive	Old Growth	Plantation	Federal	Provincial
19	Firemen's Park	8	3	Cornus racemosa	a					
19	Firemen's Park	9	3	Cornus racemosa	o					
19	Firemen's Park	3	3	Cornus stolonifera	o					
19	Firemen's Park	2	3	Crataegus sp.	o					
19	Firemen's Park	8	3	Crataegus sp.	o					
19	Firemen's Park	3	3	Fraxinus sp.	a					
19	Firemen's Park	6	3	Fraxinus sp.	r					
19	Firemen's Park	8	3	Ligustrum vulgare	r	i				
19	Firemen's Park	4	3	Lindera benzoin	a					
19	Firemen's Park	5	3	Lindera benzoin	a					
19	Firemen's Park	9	3	Lindera benzoin	o					
19	Firemen's Park	2	3	Liriodendron tulipifera	r					
19	Firemen's Park	4	3	Liriodendron tulipifera	r					
19	Firemen's Park	1	3	Lonicera tatarica	o	i				
19	Firemen's Park	2	3	Lonicera tatarica	o	i				
19	Firemen's Park	7	3	Lonicera tatarica	o	i				
19	Firemen's Park	8	3	Lonicera tatarica	o	i				
19	Firemen's Park	9	3	Lonicera tatarica	r	i				
19	Firemen's Park	1	3	Morus alba	o					
19	Firemen's Park	8	3	Morus sp.	o					
19	Firemen's Park	8	3	Parthenocissus sp.	o					
19	Firemen's Park	4	3	Picea sp.	r					
19	Firemen's Park	4	3	Prunus sp.	r					
19	Firemen's Park	8	3	Quercus robur	r					
19	Firemen's Park	1	3	Rhus typhina	a					
19	Firemen's Park	3	3	Rhus typhina	o					
19	Firemen's Park	4	3	Rhus typhina	o					
19	Firemen's Park	5	3	Rhus typhina	o					
19	Firemen's Park	6	3	Rhus typhina	a					
19	Firemen's Park	8	3	Rhus typhina	a					
19	Firemen's Park	1	3	Ribes cynosbati	r					
19	Firemen's Park	2	3	Ribes cynosbati	o					
19	Firemen's Park	5	3	Ribes sp.	o					

Site Number	Site Name	Polygon	Layer	Species	Abundance	Invasive	Old Growth	Plantation	Federal	Provincial
19	Firemen's Park	4	3	Ribes triste	r					
19	Firemen's Park	2	3	Rosa multiflora	o	i				
19	Firemen's Park	3	3	Rosa multiflora	o	i				
19	Firemen's Park	5	3	Rosa multiflora	o	i				
19	Firemen's Park	6	3	Rosa multiflora	o	i				
19	Firemen's Park	7	3	Rosa multiflora	o	i				
19	Firemen's Park	8	3	Rosa multiflora	o	i				
19	Firemen's Park	9	3	Rosa multiflora	o	i				
19	Firemen's Park	2	3	Rubus allegheniensis	o					
19	Firemen's Park	8	3	Rubus canadensis	o					
19	Firemen's Park	9	3	Rubus canadensis	r					
19	Firemen's Park	8	3	Rubus flagellaris	o					
19	Firemen's Park	1	3	Rubus occidentalis	a					
19	Firemen's Park	4	3	Rubus occidentalis	o					
19	Firemen's Park	5	3	Rubus occidentalis	a					
19	Firemen's Park	7	3	Rubus occidentalis	a					
19	Firemen's Park	8	3	Rubus occidentalis	o					
19	Firemen's Park	9	3	Rubus occidentalis	a					
19	Firemen's Park	1	3	Rubus odoratus	o					
19	Firemen's Park	4	3	Rubus odoratus	r					
19	Firemen's Park	5	3	Rubus odoratus	a					
19	Firemen's Park	9	3	Rubus odoratus	a					
19	Firemen's Park	9	3	Thuja occidentalis	r					
19	Firemen's Park	3	3	Viburnum acerifolium	r					
19	Firemen's Park	4	3	Viburnum acerifolium	r					
19	Firemen's Park	5	3	Viburnum acerifolium	a					
19	Firemen's Park	3	3	Viburnum sp.	r					
19	Firemen's Park	7	4	Achillea millefolium	o					
19	Firemen's Park	8	4	Achillea millefolium	a					
19	Firemen's Park	3	4	Actaea pachypoda	o					
19	Firemen's Park	4	4	Actaea pachypoda	r					
19	Firemen's Park	5	4	Actaea pachypoda	o					
19	Firemen's Park	9	4	Actaea pachypoda	a					



Site Number	Site Name	Polygon	Layer	Species	Abundance	Invasive	Old Growth	Plantation	Federal	Provincial
19	Firemen's Park	5	4	<i>Agrimonia gryposepala</i>	a					
19	Firemen's Park	7	4	<i>Agrimonia gryposepala</i>	o					
19	Firemen's Park	9	4	<i>Agrimonia gryposepala</i>	a					
19	Firemen's Park	1	4	<i>Alliaria petiolata</i>	a	ai				
19	Firemen's Park	4	4	<i>Alliaria petiolata</i>	a	ai				
19	Firemen's Park	5	4	<i>Alliaria petiolata</i>	o	ai				
19	Firemen's Park	7	4	<i>Alliaria petiolata</i>	a	ai				
19	Firemen's Park	8	4	<i>Alliaria petiolata</i>	o	ai				
19	Firemen's Park	9	4	<i>Alliaria petiolata</i>	o	ai				
19	Firemen's Park	3	4	<i>Ambrosia artemisiifolia</i>	o					
19	Firemen's Park	7	4	<i>Ambrosia artemisiifolia</i>	o					
19	Firemen's Park	8	4	<i>Ambrosia artemisiifolia</i>	a					
19	Firemen's Park	9	4	<i>Ambrosia artemisiifolia</i>	a					
19	Firemen's Park	3	4	<i>Ambrosia trifida</i>	r					
19	Firemen's Park	9	4	<i>Amphicarpa bracteata</i>	a					
19	Firemen's Park	5	4	<i>Apocynum cannabinum</i>	o					
19	Firemen's Park	6	4	<i>Apocynum sp.</i>	o					
19	Firemen's Park	1	4	<i>Arctium minus</i>	a					
19	Firemen's Park	3	4	<i>Arctium minus</i>	o					
19	Firemen's Park	4	4	<i>Arctium minus</i>	a					
19	Firemen's Park	5	4	<i>Arctium minus</i>	o					
19	Firemen's Park	7	4	<i>Arctium minus</i>	o					
19	Firemen's Park	1	4	<i>Arisaema atrorubens</i>	r					
19	Firemen's Park	4	4	<i>Arisaema atrorubens</i>	o					
19	Firemen's Park	5	4	<i>Arisaema atrorubens</i>	o					
19	Firemen's Park	9	4	<i>Arisaema atrorubens</i>	o					
19	Firemen's Park	1	4	<i>Asclepias syriaca</i>	o					
19	Firemen's Park	3	4	<i>Asclepias syriaca</i>	o					
19	Firemen's Park	6	4	<i>Asclepias syriaca</i>	o					
19	Firemen's Park	7	4	<i>Asclepias syriaca</i>	o					
19	Firemen's Park	8	4	<i>Asclepias syriaca</i>	r					
19	Firemen's Park	8	4	<i>Asclepias tuberosa</i>	o					
19	Firemen's Park	8	4	<i>Asparagus officinalis</i>	o					

Site Number	Site Name	Polygon	Layer	Species	Abundance	Invasive	Old Growth	Plantation	Federal	Provincial
19	Firemen's Park	7	4	Aster laevis	o					
19	Firemen's Park	9	4	Aster laevis	r					
19	Firemen's Park	9	4	Aster lateriflorus	o					
19	Firemen's Park	4	4	Aster macrophyllus	a					
19	Firemen's Park	3	4	Aster pilosus	o					
19	Firemen's Park	8	4	Aster pilosus	o					
19	Firemen's Park	9	4	Aster pilosus	r					
19	Firemen's Park	9	4	Aster simplex	o					
19	Firemen's Park	5	4	Athyrium Filix-femina	a					
19	Firemen's Park	9	4	Athyrium Filix-femina	a					
19	Firemen's Park	2	4	Bidens frondosa	o					
19	Firemen's Park	3	4	Bidens frondosa	o					
19	Firemen's Park	5	4	Bidens frondosa	o					
19	Firemen's Park	9	4	Bidens frondosa	a					
19	Firemen's Park	3	4	Carex lurida	r					
19	Firemen's Park	3	4	Carex scoparia	o					
19	Firemen's Park	3	4	Carex vulpinoidea	a					
19	Firemen's Park	4	4	Celastrus orbiculatus	r	ai				
19	Firemen's Park	9	4	Celastrus orbiculatus	a	ai				
19	Firemen's Park	3	4	Centaurea sp.	o					
19	Firemen's Park	6	4	Centaurea sp.	a					
19	Firemen's Park	7	4	Centaurea sp.	o					
19	Firemen's Park	8	4	Centaurea sp.	o					
19	Firemen's Park	1	4	Chelidonium majus	a	i				
19	Firemen's Park	7	4	Chenopodium album	o					
19	Firemen's Park	2	4	Chrysanthemum leucanthemum	o					
19	Firemen's Park	7	4	Chrysanthemum leucanthemum	o					
19	Firemen's Park	8	4	Cichorium intybus	a					
19	Firemen's Park	3	4	Cicuta maculata	o					
19	Firemen's Park	1	4	Circaea quadrisulcata	a					
19	Firemen's Park	4	4	Circaea quadrisulcata	a					
19	Firemen's Park	5	4	Circaea quadrisulcata	a					
19	Firemen's Park	7	4	Circaea quadrisulcata	a					

Site Number	Site Name	Polygon	Layer	Species	Abundance	Invasive	Old Growth	Plantation	Federal	Provincial
19	Firemen's Park	3	4	Cirsium arvense	o	i				
19	Firemen's Park	1	4	Cirsium sp.	o					
19	Firemen's Park	6	4	Cirsium sp.	o					
19	Firemen's Park	7	4	Cirsium sp.	o					
19	Firemen's Park	8	4	Cirsium sp.	o					
19	Firemen's Park	3	4	Cirsium vulgare	r					
19	Firemen's Park	3	4	Clematis virginiana	o					
19	Firemen's Park	4	4	Collinsonia canadensis	o					
19	Firemen's Park	7	4	Convolvulus arvensis	o	i				
19	Firemen's Park	3	4	Cyperus esculentus	o					
19	Firemen's Park	1	4	Dactylis glomerata	a					
19	Firemen's Park	2	4	Dactylis glomerata	a					
19	Firemen's Park	1	4	Daucus carota	a					
19	Firemen's Park	2	4	Daucus carota	o					
19	Firemen's Park	3	4	Daucus carota	o					
19	Firemen's Park	4	4	Daucus carota	o					
19	Firemen's Park	5	4	Daucus carota	o					
19	Firemen's Park	7	4	Daucus carota	o					
19	Firemen's Park	8	4	Daucus carota	a					
19	Firemen's Park	9	4	Daucus carota	o					
19	Firemen's Park	5	4	Dianthus armeria	o					
19	Firemen's Park	9	4	Dianthus armeria	r					
19	Firemen's Park	3	4	Dipsacus sylvestris	o					
19	Firemen's Park	8	4	Dipsacus sylvestris	o					
19	Firemen's Park	5	4	Dryopteris spinulosa	o					
19	Firemen's Park	9	4	Dryopteris spinulosa	a					
19	Firemen's Park	1	4	Echinocystis lobata	o					
19	Firemen's Park	3	4	Eichhornia crassipes	r					
19	Firemen's Park	3	4	Epilobium glandulosum	o					
19	Firemen's Park	3	4	Epilobium strictum	o					
19	Firemen's Park	4	4	Epipactis helleborine	r					
19	Firemen's Park	1	4	Equisetum sp.	o					
19	Firemen's Park	2	4	Equisetum sp.	o					

Site Number	Site Name	Polygon	Layer	Species	Abundance	Invasive	Old Growth	Plantation	Federal	Provincial
19	Firemen's Park	3	4	Equisetum sp.	o					
19	Firemen's Park	7	4	Equisetum sp.	o					
19	Firemen's Park	1	4	Erigeron annuus	o					
19	Firemen's Park	2	4	Erigeron annuus	o					
19	Firemen's Park	6	4	Erigeron annuus	o					
19	Firemen's Park	8	4	Erigeron annuus	o					
19	Firemen's Park	9	4	Erigeron annuus	o					
19	Firemen's Park	4	4	Erigeron philadelphicus	a					
19	Firemen's Park	2	4	Eupatorium perfoliatum	r					
19	Firemen's Park	3	4	Eupatorium perfoliatum	o					
19	Firemen's Park	9	4	Eupatorium rugosum	r					
19	Firemen's Park	4	4	Fragaria sp.	r					
19	Firemen's Park	5	4	Fragaria sp.	o					
19	Firemen's Park	3	4	Geranium maculatum	r					
19	Firemen's Park	5	4	Geranium maculatum	o					
19	Firemen's Park	9	4	Geranium maculatum	a					
19	Firemen's Park	5	4	Geranium robertianum	o					
19	Firemen's Park	2	4	Geum aleppicum	o					
19	Firemen's Park	5	4	Geum canadense	o					
19	Firemen's Park	9	4	Geum canadense	a					
19	Firemen's Park	1	4	Geum sp.	o					
19	Firemen's Park	4	4	Geum sp.	a					
19	Firemen's Park	5	4	Geum sp.	o					
19	Firemen's Park	7	4	Geum sp.	o					
19	Firemen's Park	8	4	Geum sp.	o					
19	Firemen's Park	9	4	Geum sp.	a					
19	Firemen's Park	1	4	Glechoma hederacea	a					
19	Firemen's Park	2	4	Glechoma hederacea	a					
19	Firemen's Park	4	4	Glechoma hederacea	a					
19	Firemen's Park	5	4	Glechoma hederacea	o					
19	Firemen's Park	7	4	Glechoma hederacea	o					
19	Firemen's Park	8	4	Glechoma hederacea	a					
19	Firemen's Park	3	4	Hesperis matronalis	o	ai				

Site Number	Site Name	Polygon	Layer	Species	Abundance	Invasive	Old Growth	Plantation	Federal	Provincial
19	Firemen's Park	3	4	Hieracium sp.	o					
19	Firemen's Park	4	4	Hieracium sp.	o					
19	Firemen's Park	5	4	Hydrophyllum virginianum	o					
19	Firemen's Park	6	4	Hypericum perforatum	o	i				
19	Firemen's Park	7	4	Hypericum perforatum	o	i				
19	Firemen's Park	8	4	Hypericum perforatum	r	i				
19	Firemen's Park	9	4	Hypericum perforatum	o	i				
19	Firemen's Park	3	4	Impatiens capensis	d					
19	Firemen's Park	9	4	Impatiens capensis	a					
19	Firemen's Park	1	4	Impatiens sp.	a					
19	Firemen's Park	5	4	Impatiens sp.	o					
19	Firemen's Park	9	4	Lactuca canadensis	o					
19	Firemen's Park	8	4	Lactuca sp.	r					
19	Firemen's Park	5	4	Lapsana communis	a					
19	Firemen's Park	3	4	Lemna sp.	a					
19	Firemen's Park	7	4	Leonurus cardiaca	a					
19	Firemen's Park	8	4	Lotus corniculatus	o					
19	Firemen's Park	2	4	Lysimachia ciliata	a	i				
19	Firemen's Park	4	4	Lysimachia nummularia	o	i				
19	Firemen's Park	3	4	Matteuccia Struthiopteris	a					
19	Firemen's Park	2	4	Medicago lupulina	o					
19	Firemen's Park	7	4	Medicago lupulina	a					
19	Firemen's Park	7	4	Melilotus alba	a					
19	Firemen's Park	8	4	Melilotus alba	a					
19	Firemen's Park	5	4	Menispermum canadense	o					
19	Firemen's Park	3	4	Mentha piperita	a					
19	Firemen's Park	2	4	Monarda fistulosa	a					
19	Firemen's Park	5	4	Monotropa uniflora	a					
19	Firemen's Park	8	4	Oenothera biennis	o					
19	Firemen's Park	2	4	Onoclea sensibilis	o					
19	Firemen's Park	3	4	Onoclea sensibilis	a					
19	Firemen's Park	5	4	Onoclea sensibilis	o					
19	Firemen's Park	9	4	Onoclea sensibilis	a					



Site Number	Site Name	Polygon	Layer	Species	Abundance	Invasive	Old Growth	Plantation	Federal	Provincial
19	Firemen's Park	4	4	Osmunda claytoniana	r					
19	Firemen's Park	5	4	Osmunda claytoniana	r					
19	Firemen's Park	9	4	Osmunda claytoniana	a					
19	Firemen's Park	1	4	Parthenocissus sp.	a					
19	Firemen's Park	2	4	Parthenocissus sp.	a					
19	Firemen's Park	4	4	Parthenocissus sp.	a					
19	Firemen's Park	5	4	Parthenocissus sp.	a					
19	Firemen's Park	7	4	Parthenocissus sp.	o					
19	Firemen's Park	9	4	Parthenocissus sp.	a					
19	Firemen's Park	6	4	Phleum pratense	d					
19	Firemen's Park	3	4	Phragmites	a	ai				
19	Firemen's Park	9	4	Phragmites	a	ai				
19	Firemen's Park	9	4	Phytolacca americana	o					
19	Firemen's Park	9	4	Pilea pumila	a					
19	Firemen's Park	7	4	Plantago lanceolata	o					
19	Firemen's Park	8	4	Plantago lanceolata	o					
19	Firemen's Park	1	4	Plantago major	o					
19	Firemen's Park	4	4	Plantago major	o					
19	Firemen's Park	7	4	Plantago major	a					
19	Firemen's Park	4	4	Podophyllum peltatum	o					
19	Firemen's Park	5	4	Podophyllum peltatum	a					
19	Firemen's Park	9	4	Podophyllum peltatum	a					
19	Firemen's Park	5	4	Polygonatum pubescens	r					
19	Firemen's Park	8	4	Polygonatum sp.	o					
19	Firemen's Park	3	4	Polygonum lapathifolium	a					
19	Firemen's Park	3	4	Polygonum pensylvanicum	o					
19	Firemen's Park	9	4	Polygonum pensylvanicum	o					
19	Firemen's Park	1	4	Polygonum persicaria	o					
19	Firemen's Park	2	4	Polygonum persicaria	o					
19	Firemen's Park	5	4	Polygonum persicaria	o					
19	Firemen's Park	2	4	Polygonum sp.	o					
19	Firemen's Park	5	4	Polystichum acrostichoides	a					
19	Firemen's Park	9	4	Polystichum acrostichoides	o					

Site Number	Site Name	Polygon	Layer	Species	Abundance	Invasive	Old Growth	Plantation	Federal	Provincial
19	Firemen's Park	6	4	Potentilla recta	o					
19	Firemen's Park	2	4	Potentilla simplex	o					
19	Firemen's Park	5	4	Prenanthes altissima	o					
19	Firemen's Park	9	4	Prenanthes altissima	o					
19	Firemen's Park	4	4	Prenanthes sp.	o					
19	Firemen's Park	5	4	Prenanthes sp.	r					
19	Firemen's Park	3	4	Prunella vulgaris	o					
19	Firemen's Park	5	4	Prunella vulgaris	o					
19	Firemen's Park	4	4	Pteridium aquilinum	o					
19	Firemen's Park	4	4	Ranunculus abortivus	a					
19	Firemen's Park	1	4	Ranunculus acris	o					
19	Firemen's Park	2	4	Ranunculus acris	o					
19	Firemen's Park	4	4	Ranunculus acris	o					
19	Firemen's Park	1	4	Rhus radicans	o					
19	Firemen's Park	3	4	Rhus radicans	a					
19	Firemen's Park	4	4	Rhus radicans	a					
19	Firemen's Park	5	4	Rhus radicans	a					
19	Firemen's Park	6	4	Rhus radicans	o					
19	Firemen's Park	7	4	Rhus radicans	o					
19	Firemen's Park	8	4	Rhus radicans	a					
19	Firemen's Park	9	4	Rhus radicans	o					
19	Firemen's Park	2	4	Rumex crispus	o					
19	Firemen's Park	8	4	Rumex crispus	r					
19	Firemen's Park	3	4	Scirpus atrovirens	a					
19	Firemen's Park	2	4	Sisyrinchium sp.	r					
19	Firemen's Park	2	4	Smilacina racemosa	o					
19	Firemen's Park	4	4	Smilacina racemosa	a					
19	Firemen's Park	5	4	Smilacina racemosa	a					
19	Firemen's Park	7	4	Smilacina racemosa	o					
19	Firemen's Park	9	4	Smilacina racemosa	a					
19	Firemen's Park	4	4	Smilax herbacea	r					
19	Firemen's Park	9	4	Smilax herbacea	o					
19	Firemen's Park	1	4	Solanum dulcamara	o					

Site Number	Site Name	Polygon	Layer	Species	Abundance	Invasive	Old Growth	Plantation	Federal	Provincial
19	Firemen's Park	4	4	Solanum dulcamara	o					
19	Firemen's Park	7	4	Solanum dulcamara	o					
19	Firemen's Park	9	4	Solanum dulcamara	r					
19	Firemen's Park	9	4	Solidago caesia	o					
19	Firemen's Park	3	4	Solidago canadensis	a					
19	Firemen's Park	4	4	Solidago canadensis	a					
19	Firemen's Park	6	4	Solidago canadensis	o					
19	Firemen's Park	7	4	Solidago canadensis	a					
19	Firemen's Park	8	4	Solidago canadensis	a					
19	Firemen's Park	9	4	Solidago canadensis	a					
19	Firemen's Park	7	4	Solidago graminifolia	o					
19	Firemen's Park	8	4	Solidago graminifolia	o					
19	Firemen's Park	9	4	Solidago graminifolia	o					
19	Firemen's Park	1	4	Solidago sp.	a					
19	Firemen's Park	2	4	Solidago sp.	a					
19	Firemen's Park	5	4	Solidago sp.	a					
19	Firemen's Park	6	4	Solidago sp.	a					
19	Firemen's Park	1	4	Taraxacum officinale	a					
19	Firemen's Park	4	4	Thalictrum polygamum	a					
19	Firemen's Park	5	4	Thalictrum polygamum	a					
19	Firemen's Park	9	4	Tovara virginiana	a					
19	Firemen's Park	6	4	Trifolium pratense	o					
19	Firemen's Park	7	4	Trifolium pratense	a					
19	Firemen's Park	8	4	Trifolium pratense	o					
19	Firemen's Park	1	4	Trillium grandiflorum	o					
19	Firemen's Park	4	4	Trillium grandiflorum	a					
19	Firemen's Park	5	4	Trillium grandiflorum	a					
19	Firemen's Park	9	4	Trillium grandiflorum	a					
19	Firemen's Park	5	4	Triosteum aurantiacum	r					
19	Firemen's Park	3	4	Tussilago farfara	a					
19	Firemen's Park	9	4	Tussilago farfara	o					
19	Firemen's Park	3	4	Typha sp.	a					
19	Firemen's Park	3	4	Verbena hastata	o					

Site Number	Site Name	Polygon	Layer	Species	Abundance	Invasive	Old Growth	Plantation	Federal	Provincial
19	Firemen's Park	2	4	Verbena urticifolia	o					
19	Firemen's Park	7	4	Verbena urticifolia	o					
19	Firemen's Park	9	4	Verbena urticifolia	o					
19	Firemen's Park	9	4	Veronica officinalis	o					
19	Firemen's Park	6	4	Vicia cracca	a					
19	Firemen's Park	7	4	Vicia cracca	a					
19	Firemen's Park	3	4	Vicia sp.	o					
19	Firemen's Park	8	4	Vicia sp.	o					
19	Firemen's Park	1	4	Viola sp.	o					
19	Firemen's Park	4	4	Viola sp.	a					
19	Firemen's Park	5	4	Viola sp.	a					
19	Firemen's Park	7	4	Viola sp.	o					
19	Firemen's Park	9	4	Viola sp.	a					
19	Firemen's Park	1	4	Vitis sp.	a					
19	Firemen's Park	2	4	Vitis sp.	a					
19	Firemen's Park	3	4	Vitis sp.	o					
19	Firemen's Park	4	4	Vitis sp.	o					
19	Firemen's Park	5	4	Vitis sp.	a					
19	Firemen's Park	6	4	Vitis sp.	o					
19	Firemen's Park	7	4	Vitis sp.	d					
19	Firemen's Park	8	4	Vitis sp.	a					
19	Firemen's Park	9	4	Vitis sp.	a					
19	Firemen's Park	3	4	Xanthium chinense	o					

## Firemen's Park Disturbance Report

Site	Polygon	Disturbance / Extent	Total Score
19 Firemen's Park	1	ALIEN SPECIES / EXTENT OF ALIEN SPECIES	4
19 Firemen's Park	1	BEAVER ACTIVITY / EXTENT OF BEAVER ACTIVITY	0
19 Firemen's Park	1	BROWSE (e.g. DEER) / EXTENT OF BROWSE	0
19 Firemen's Park	1	DISEASE/DEATH OF TREES / EXTENT OF DISEASE/DEATH	1
19 Firemen's Park	1	DUMPING (RUBBISH) / EXTENT OF DUMPING	2
19 Firemen's Park	1	EARTH DISPLACEMENT / EXTENT OF DISPLACEMENT	0
19 Firemen's Park	1	FIRE / EXTENT OF FIRE	0
19 Firemen's Park	1	FLOODING (pools & puddling) / EXTENT OF FLOODING	0
19 Firemen's Park	1	GAPS IN FOREST CANOPY / EXTENT OF GAPS	0
19 Firemen's Park	1	ICE DAMAGE / EXTENT OF ICE DAMAGE	0
19 Firemen's Park	1	INTENSITY / EXTENT OF LOGGING	0
19 Firemen's Park	1	LIVESTOCK (GRAZING) / EXTENT OF LIVESTOCK	0
19 Firemen's Park	1	NOISE / EXTENT OF NOISE	2
19 Firemen's Park	1	PLANTING (PLANTATION) / EXTENT OF PLANTING	0
19 Firemen's Park	1	RECREATIONAL USE / EXTENT OF RECR. USE	1
19 Firemen's Park	1	SUGAR BUSH OPERATIONS / EXTENT OF OPERATIONS	0
19 Firemen's Park	1	TIME SINCE LOGGING	0
19 Firemen's Park	1	TRACKS AND TRAILS / EXTENT OF TRACKS/TRAILS	0
19 Firemen's Park	1	WIND THROW (BLOW DOWN) / EXTENT OF WIND THROW	0
19 Firemen's Park	2	ALIEN SPECIES / EXTENT OF ALIEN SPECIES	4
19 Firemen's Park	2	BEAVER ACTIVITY / EXTENT OF BEAVER ACTIVITY	0
19 Firemen's Park	2	BROWSE (e.g. DEER) / EXTENT OF BROWSE	1
19 Firemen's Park	2	DISEASE/DEATH OF TREES / EXTENT OF DISEASE/DEATH	1
19 Firemen's Park	2	DUMPING (RUBBISH) / EXTENT OF DUMPING	2
19 Firemen's Park	2	EARTH DISPLACEMENT / EXTENT OF DISPLACEMENT	0
19 Firemen's Park	2	FIRE / EXTENT OF FIRE	0
19 Firemen's Park	2	FLOODING (pools & puddling) / EXTENT OF FLOODING	1
19 Firemen's Park	2	GAPS IN FOREST CANOPY / EXTENT OF GAPS	0
19 Firemen's Park	2	ICE DAMAGE / EXTENT OF ICE DAMAGE	0



Site	Polygon	Disturbance / Extent	Total Score
19 Firemen's Park	2	INTENSITY / EXTENT OF LOGGING	0
19 Firemen's Park	2	LIVESTOCK (GRAZING) / EXTENT OF LIVESTOCK	0
19 Firemen's Park	2	NOISE / EXTENT OF NOISE	1
19 Firemen's Park	2	PLANTING (PLANTATION) / EXTENT OF PLANTING	0
19 Firemen's Park	2	RECREATIONAL USE / EXTENT OF RECR. USE	4
19 Firemen's Park	2	SUGAR BUSH OPERATIONS / EXTENT OF OPERATIONS	0
19 Firemen's Park	2	TIME SINCE LOGGING	0
19 Firemen's Park	2	TRACKS AND TRAILS / EXTENT OF TRACKS/TRAILS	4
19 Firemen's Park	2	WIND THROW (BLOW DOWN) / EXTENT OF WIND THROW	0
19 Firemen's Park	3	ALIEN SPECIES / EXTEXT OF ALIEN SPECIES	4
19 Firemen's Park	3	BEAVER ACTIVITY / EXTENT OF BEAVER ACTIVITY	0
19 Firemen's Park	3	BROWSE (e.g. DEER) / EXTENT OF BROWSE	1
19 Firemen's Park	3	DISEASE/DEATH OF TREES / EXTENT OF DISEASE/DEATH	1
19 Firemen's Park	3	DUMPING (RUBBISH) / EXTENT OF DUMPING	1
19 Firemen's Park	3	EARTH DISPLACEMENT / EXTENT OF DISPLACEMENT	0
19 Firemen's Park	3	FIRE / EXTENT OF FIRE	0
19 Firemen's Park	3	FLOODING (pools & puddling) / EXTENT OF FLOODING	0
19 Firemen's Park	3	GAPS IN FOREST CANOPY / EXTENT OF GAPS	0
19 Firemen's Park	3	ICE DAMAGE / EXTENT OF ICE DAMAGE	0
19 Firemen's Park	3	INTENSITY / EXTENT OF LOGGING	0
19 Firemen's Park	3	LIVESTOCK (GRAZING) / EXTENT OF LIVESTOCK	0
19 Firemen's Park	3	NOISE / EXTENT OF NOISE	1
19 Firemen's Park	3	PLANTING (PLANTATION) / EXTENT OF PLANTING	0
19 Firemen's Park	3	RECREATIONAL USE / EXTENT OF RECR. USE	4
19 Firemen's Park	3	SUGAR BUSH OPERATIONS / EXTENT OF OPERATIONS	0
19 Firemen's Park	3	TIME SINCE LOGGING	0
19 Firemen's Park	3	TRACKS AND TRAILS / EXTENT OF TRACKS/TRAILS	4
19 Firemen's Park	3	WIND THROW (BLOW DOWN) / EXTENT OF WIND THROW	0
19 Firemen's Park	4	ALIEN SPECIES / EXTEXT OF ALIEN SPECIES	1

Site	Polygon	Disturbance / Extent	Total Score
19 Firemen's Park	4	BEAVER ACTIVITY / EXTENT OF BEAVER ACTIVITY	0
19 Firemen's Park	4	BROWSE (e.g. DEER) / EXTENT OF BROWSE	1
19 Firemen's Park	4	DISEASE/DEATH OF TREES / EXTENT OF DISEASE/DEATH	1
19 Firemen's Park	4	DUMPING (RUBBISH) / EXTENT OF DUMPING	1
19 Firemen's Park	4	EARTH DISPLACEMENT / EXTENT OF DISPLACEMENT	4
19 Firemen's Park	4	FIRE / EXTENT OF FIRE	0
19 Firemen's Park	4	FLOODING (pools & puddling) / EXTENT OF FLOODING	0
19 Firemen's Park	4	GAPS IN FOREST CANOPY / EXTENT OF GAPS	0
19 Firemen's Park	4	ICE DAMAGE / EXTENT OF ICE DAMAGE	0
19 Firemen's Park	4	INTENSITY / EXTENT OF LOGGING	0
19 Firemen's Park	4	LIVESTOCK (GRAZING) / EXTENT OF LIVESTOCK	0
19 Firemen's Park	4	NOISE / EXTENT OF NOISE	1
19 Firemen's Park	4	PLANTING (PLANTATION) / EXTENT OF PLANTING	0
19 Firemen's Park	4	RECREATIONAL USE / EXTENT OF RECR. USE	4
19 Firemen's Park	4	SUGAR BUSH OPERATIONS / EXTENT OF OPERATIONS	0
19 Firemen's Park	4	TIME SINCE LOGGING	0
19 Firemen's Park	4	TRACKS AND TRAILS / EXTENT OF TRACKS/TRAILS	4
19 Firemen's Park	4	WIND THROW (BLOW DOWN) / EXTENT OF WIND THROW	0
19 Firemen's Park	5	ALIEN SPECIES / EXTENT OF ALIEN SPECIES	1
19 Firemen's Park	5	BEAVER ACTIVITY / EXTENT OF BEAVER ACTIVITY	0
19 Firemen's Park	5	BROWSE (e.g. DEER) / EXTENT OF BROWSE	1
19 Firemen's Park	5	DISEASE/DEATH OF TREES / EXTENT OF DISEASE/DEATH	1
19 Firemen's Park	5	DUMPING (RUBBISH) / EXTENT OF DUMPING	1
19 Firemen's Park	5	EARTH DISPLACEMENT / EXTENT OF DISPLACEMENT	0
19 Firemen's Park	5	FIRE / EXTENT OF FIRE	0
19 Firemen's Park	5	FLOODING (pools & puddling) / EXTENT OF FLOODING	0
19 Firemen's Park	5	GAPS IN FOREST CANOPY / EXTENT OF GAPS	0
19 Firemen's Park	5	ICE DAMAGE / EXTENT OF ICE DAMAGE	0
19 Firemen's Park	5	INTENSITY / EXTENT OF LOGGING	0

Site	Polygon	Disturbance / Extent	Total Score
19 Firemen's Park	5	LIVESTOCK (GRAZING) / EXTENT OF LIVESTOCK	0
19 Firemen's Park	5	NOISE / EXTENT OF NOISE	1
19 Firemen's Park	5	PLANTING (PLANTATION) / EXTENT OF PLANTING	0
19 Firemen's Park	5	RECREATIONAL USE / EXTENT OF RECR. USE	1
19 Firemen's Park	5	SUGAR BUSH OPERATIONS / EXTENT OF OPERATIONS	0
19 Firemen's Park	5	TIME SINCE LOGGING	0
19 Firemen's Park	5	TRACKS AND TRAILS / EXTENT OF TRACKS/TRAILS	4
19 Firemen's Park	5	WIND THROW (BLOW DOWN) / EXTENT OF WIND THROW	0
19 Firemen's Park	6	ALIEN SPECIES / EXTENT OF ALIEN SPECIES	4
19 Firemen's Park	6	BEAVER ACTIVITY / EXTENT OF BEAVER ACTIVITY	0
19 Firemen's Park	6	BROWSE (e.g. DEER) / EXTENT OF BROWSE	1
19 Firemen's Park	6	DISEASE/DEATH OF TREES / EXTENT OF DISEASE/DEATH	0
19 Firemen's Park	6	DUMPING (RUBBISH) / EXTENT OF DUMPING	1
19 Firemen's Park	6	EARTH DISPLACEMENT / EXTENT OF DISPLACEMENT	0
19 Firemen's Park	6	FIRE / EXTENT OF FIRE	0
19 Firemen's Park	6	FLOODING (pools & puddling) / EXTENT OF FLOODING	0
19 Firemen's Park	6	GAPS IN FOREST CANOPY / EXTENT OF GAPS	0
19 Firemen's Park	6	ICE DAMAGE / EXTENT OF ICE DAMAGE	0
19 Firemen's Park	6	INTENSITY / EXTENT OF LOGGING	0
19 Firemen's Park	6	LIVESTOCK (GRAZING) / EXTENT OF LIVESTOCK	0
19 Firemen's Park	6	NOISE / EXTENT OF NOISE	1
19 Firemen's Park	6	PLANTING (PLANTATION) / EXTENT OF PLANTING	4
19 Firemen's Park	6	RECREATIONAL USE / EXTENT OF RECR. USE	4
19 Firemen's Park	6	SUGAR BUSH OPERATIONS / EXTENT OF OPERATIONS	0
19 Firemen's Park	6	TIME SINCE LOGGING	0
19 Firemen's Park	6	TRACKS AND TRAILS / EXTENT OF TRACKS/TRAILS	4
19 Firemen's Park	6	WIND THROW (BLOW DOWN) / EXTENT OF WIND THROW	0
19 Firemen's Park	7	ALIEN SPECIES / EXTENT OF ALIEN SPECIES	9
19 Firemen's Park	7	BEAVER ACTIVITY / EXTENT OF BEAVER ACTIVITY	0

Site	Polygon	Disturbance / Extent	Total Score
19 Firemen's Park	7	BROWSE (e.g. DEER) / EXTENT OF BROWSE	0
19 Firemen's Park	7	DISEASE/DEATH OF TREES / EXTENT OF DISEASE/DEATH	1
19 Firemen's Park	7	DUMPING (RUBBISH) / EXTENT OF DUMPING	1
19 Firemen's Park	7	EARTH DISPLACEMENT / EXTENT OF DISPLACEMENT	0
19 Firemen's Park	7	FIRE / EXTENT OF FIRE	0
19 Firemen's Park	7	FLOODING (pools & puddling) / EXTENT OF FLOODING	0
19 Firemen's Park	7	GAPS IN FOREST CANOPY / EXTENT OF GAPS	0
19 Firemen's Park	7	ICE DAMAGE / EXTENT OF ICE DAMAGE	0
19 Firemen's Park	7	INTENSITY / EXTENT OF LOGGING	0
19 Firemen's Park	7	LIVESTOCK (GRAZING) / EXTENT OF LIVESTOCK	0
19 Firemen's Park	7	NOISE / EXTENT OF NOISE	1
19 Firemen's Park	7	PLANTING (PLANTATION) / EXTENT OF PLANTING	0
19 Firemen's Park	7	RECREATIONAL USE / EXTENT OF RECR. USE	1
19 Firemen's Park	7	SUGAR BUSH OPERATIONS / EXTENT OF OPERATIONS	0
19 Firemen's Park	7	TIME SINCE LOGGING	0
19 Firemen's Park	7	TRACKS AND TRAILS / EXTENT OF TRACKS/TRAILS	1
19 Firemen's Park	7	WIND THROW (BLOW DOWN) / EXTENT OF WIND THROW	0
19 Firemen's Park	8	ALIEN SPECIES / EXTENT OF ALIEN SPECIES	9
19 Firemen's Park	8	BEAVER ACTIVITY / EXTENT OF BEAVER ACTIVITY	0
19 Firemen's Park	8	BROWSE (e.g. DEER) / EXTENT OF BROWSE	1
19 Firemen's Park	8	DISEASE/DEATH OF TREES / EXTENT OF DISEASE/DEATH	1
19 Firemen's Park	8	DUMPING (RUBBISH) / EXTENT OF DUMPING	1
19 Firemen's Park	8	EARTH DISPLACEMENT / EXTENT OF DISPLACEMENT	0
19 Firemen's Park	8	FIRE / EXTENT OF FIRE	0
19 Firemen's Park	8	FLOODING (pools & puddling) / EXTENT OF FLOODING	0
19 Firemen's Park	8	GAPS IN FOREST CANOPY / EXTENT OF GAPS	0
19 Firemen's Park	8	ICE DAMAGE / EXTENT OF ICE DAMAGE	0
19 Firemen's Park	8	INTENSITY / EXTENT OF LOGGING	0
19 Firemen's Park	8	LIVESTOCK (GRAZING) / EXTENT OF LIVESTOCK	0

Site	Polygon	Disturbance / Extent	Total Score
19 Firemen's Park	8	NOISE / EXTENT OF NOISE	1
19 Firemen's Park	8	PLANTING (PLANTATION) / EXTENT OF PLANTING	4
19 Firemen's Park	8	RECREATIONAL USE / EXTENT OF RECR. USE	4
19 Firemen's Park	8	SUGAR BUSH OPERATIONS / EXTENT OF OPERATIONS	0
19 Firemen's Park	8	TIME SINCE LOGGING	0
19 Firemen's Park	8	TRACKS AND TRAILS / EXTENT OF TRACKS/TRAILS	4
19 Firemen's Park	8	WIND THROW (BLOW DOWN) / EXTENT OF WIND THROW	0
19 Firemen's Park	9	ALIEN SPECIES / EXTENT OF ALIEN SPECIES	4
19 Firemen's Park	9	ATV	4
19 Firemen's Park	9	BEAVER ACTIVITY / EXTENT OF BEAVER ACTIVITY	0
19 Firemen's Park	9	BROWSE (e.g. DEER) / EXTENT OF BROWSE	1
19 Firemen's Park	9	DISEASE/DEATH OF TREES / EXTENT OF DISEASE/DEATH	4
19 Firemen's Park	9	DUMPING (RUBBISH) / EXTENT OF DUMPING	1
19 Firemen's Park	9	EARTH DISPLACEMENT / EXTENT OF DISPLACEMENT	0
19 Firemen's Park	9	FIRE / EXTENT OF FIRE	0
19 Firemen's Park	9	FLOODING (pools & puddling) / EXTENT OF FLOODING	1
19 Firemen's Park	9	GAPS IN FOREST CANOPY / EXTENT OF GAPS	0
19 Firemen's Park	9	ICE DAMAGE / EXTENT OF ICE DAMAGE	0
19 Firemen's Park	9	INTENSITY / EXTENT OF LOGGING	0
19 Firemen's Park	9	LIVESTOCK (GRAZING) / EXTENT OF LIVESTOCK	0
19 Firemen's Park	9	NOISE / EXTENT OF NOISE	1
19 Firemen's Park	9	PLANTING (PLANTATION) / EXTENT OF PLANTING	0
19 Firemen's Park	9	RECREATIONAL USE / EXTENT OF RECR. USE	4
19 Firemen's Park	9	SUGAR BUSH OPERATIONS / EXTENT OF OPERATIONS	0
19 Firemen's Park	9	TIME SINCE LOGGING	0
19 Firemen's Park	9	TRACKS AND TRAILS / EXTENT OF TRACKS/TRAILS	4
19 Firemen's Park	9	WIND THROW (BLOW DOWN) / EXTENT OF WIND THROW	1