

GALE CENTRE RETURN TO PLAY



UPDATED OCTOBER 8, 2020

CONTENTS

PG 2 - ARENA RENTAL REMINDERS

PG 8 -

MASK REQUIREMENTS

PG 3-7 - RINK DIRECTIONS & CHANGE
ROOM CAPACITIES

PG 9 -

CITY OF NIAGARA FALLS SELF
SCREENING APP

If you have any questions or concerns, please contact Rob McDonald
at 905-356-7521 Ext. 3340 or rmcdonald@niagarafalls.ca

ARENA RENTAL REMINDERS

(UPDATED OCTOBER 8/20)

SELF SCREENING - PLEASE DO NOT ENTER IF YOU FEEL UNWELL
OR HAVE BEEN IN CONTACT WITH A CONFIRMED CASE OF COVID-19

- Maximum of 50 people allowed in each rink - this includes participants, spectators, coaches, referees etc. We expect the organizer of each ice hour to enforce this within your group. This is a firm cap, if a rental is over 50 people, the rental will be canceled on the spot and no refund given.
- Players & teams that live outside of the Niagara Regional Public Health Unit are not permitted to utilize Gale Centre. The City of Niagara Falls made this decision in consultation with our Regional Medical Officers of Health. Rentals that do not follow this direction will risk having their ice contract canceled. We will continue to review this decision between now and Halloween.
- Rink #1 & #3 rentals must use front doors off of Thorold Stone Road
- Rink #2 & #4 rentals must use back doors off of Fourth Avenue
- Change rooms will be open but showers are still closed
- Change rooms are accessible 15 minutes prior to your rental and you must vacate the room 15 minutes after your rental - this is an important piece to the City having the appropriate time to clean and disinfect rooms. Groups that do not follow these guidelines risk having their ice contract canceled
- Room keys will be left in the door for you rather than picking up from the arena administration desk. Please leave the key in the door after your rental. Arena staff will disinfect the keys in between each rental
- Each change room has a maximum occupancy that is identified on each door. The number was determined based on being able to physically distance (6 feet) from others
- Chairs/Benches will remain available in hallway as additional skate tying spaces
- The City of Niagara Falls continues to focus on increased cleaning and disinfecting protocols
- All spectators must remain inside each rink, limited seating will be available inside the rink to reduce the amount of cleaning and disinfecting required. The main corridor continues to be closed for spectators, please dress warm for the cold temperatures
- Masks are required for everyone inside the Gale Centre up until the time that the participant puts their helmet on to enter the ice. Masks are required inside the change rooms as well

THANK YOU FOR YOUR COOPERATION

NIAGARAFALLS.CA/COVID19

FOR MORE INFORMATION PLEASE CONTACT 905-356-7521 EXT. 3340



Thorold Stone Rd

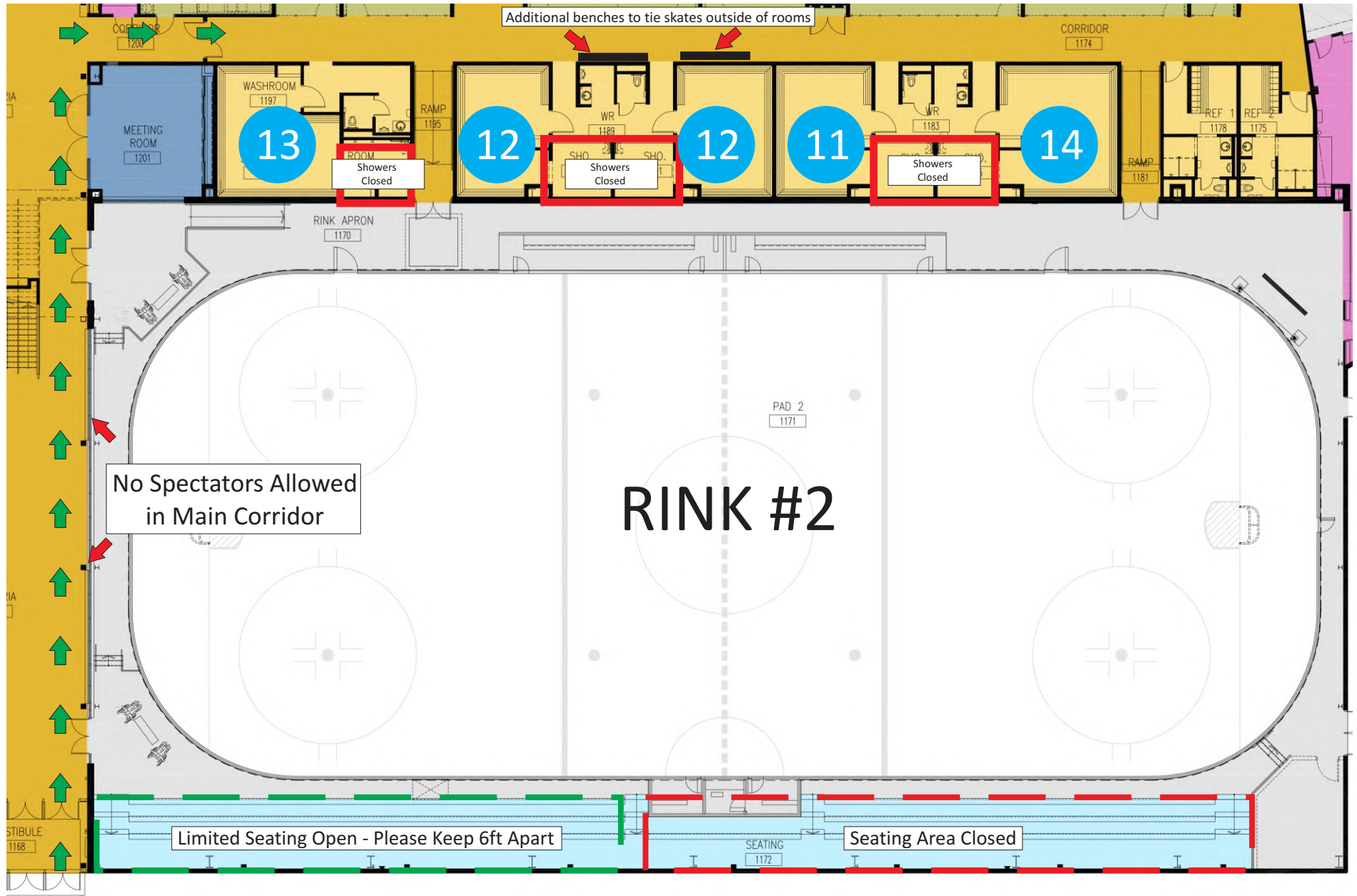
(Rink #1 rentals have to park in front parking lot)

Gale Centre - Rink #1 (COVID 19)



= maximum occupancy in each change room

Gale Centre - Rink #2 (COVID 19)



 = maximum occupancy in each change room


Fourth Avenue 
(Rink #2 & #4 rentals have to park in back parking lot)

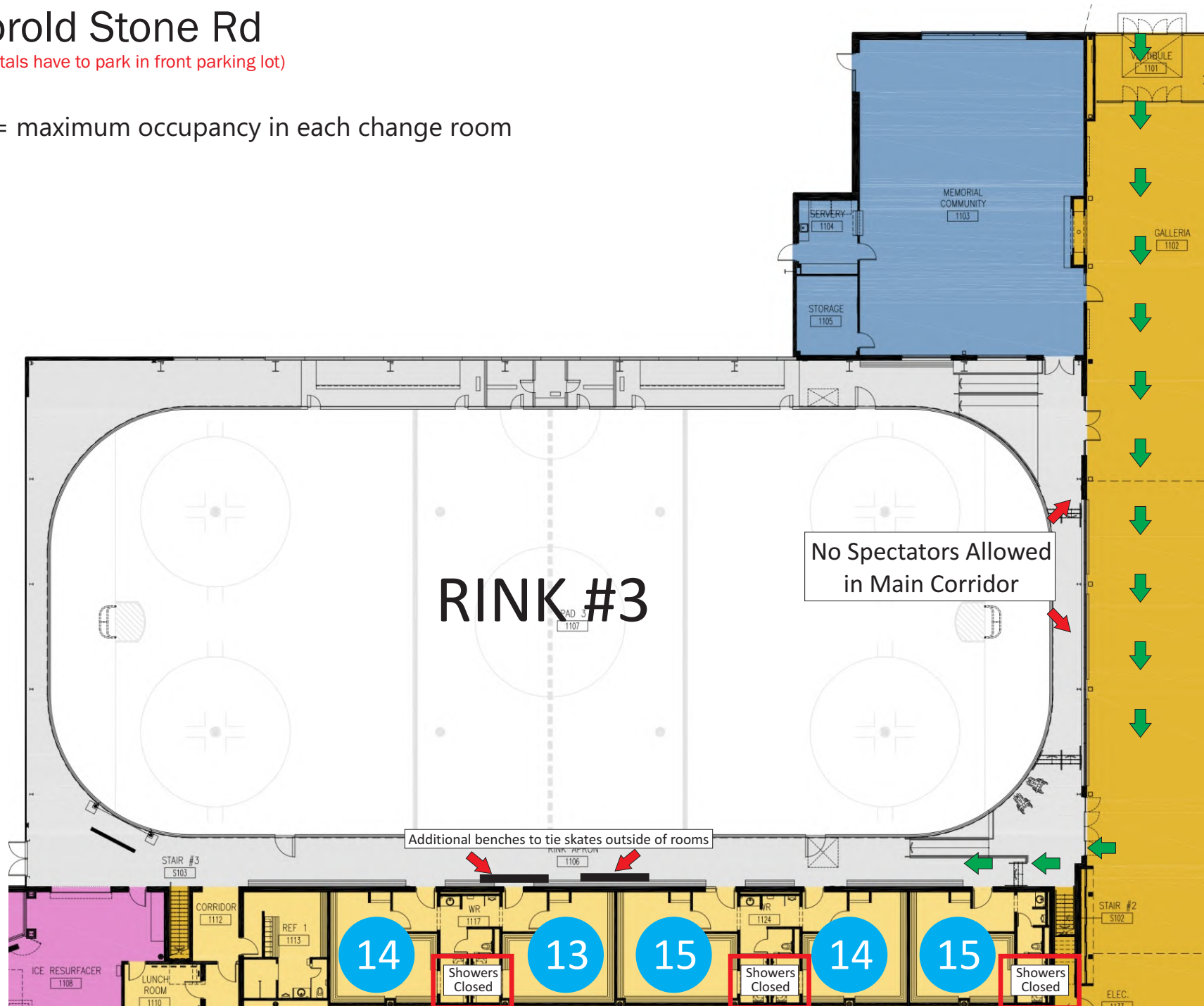


Gale Centre - Rink #3 (COVID 19)

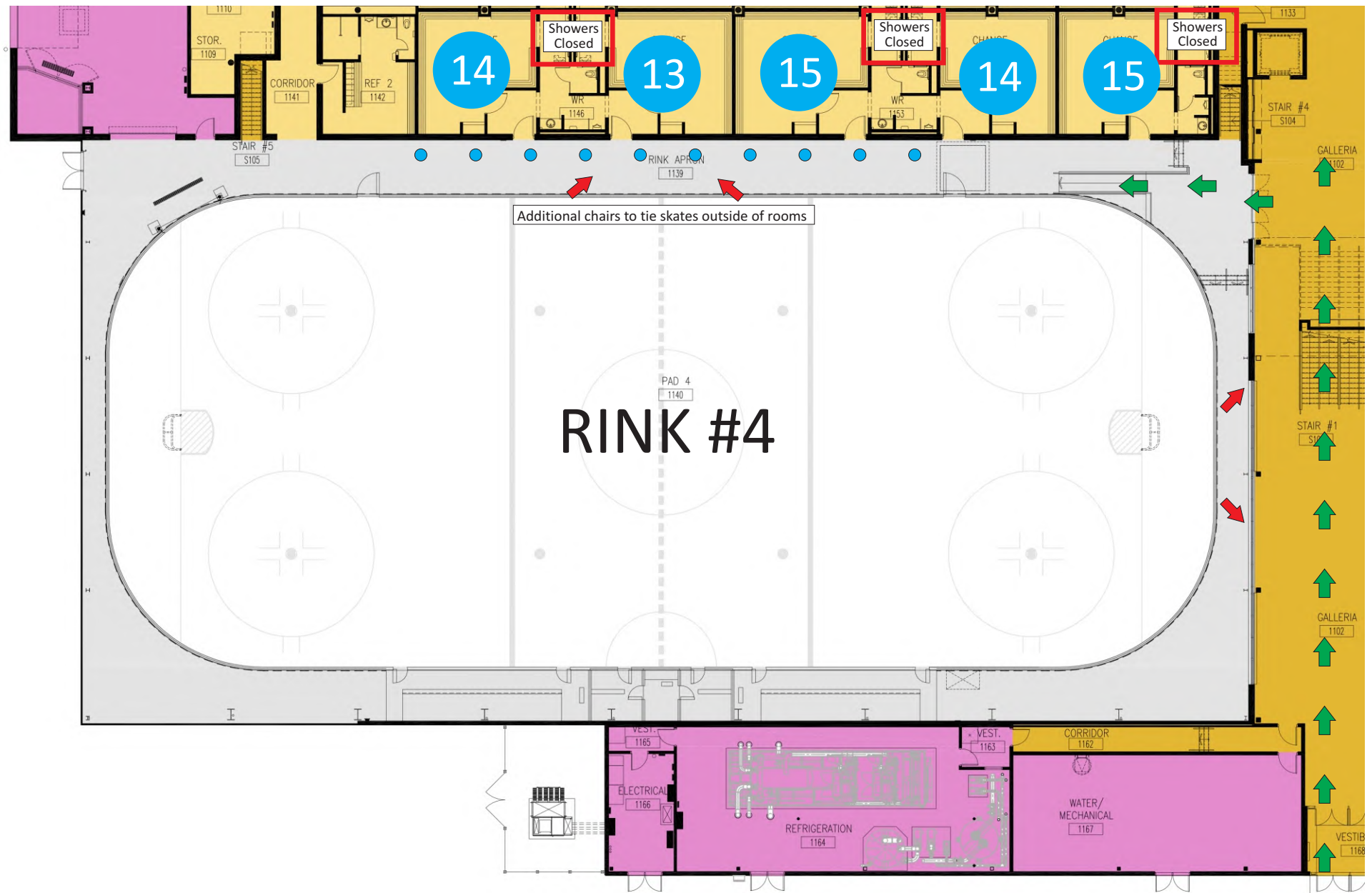
Thorold Stone Rd

(Rink #3 rentals have to park in front parking lot)

 = maximum occupancy in each change room



Gale Centre - Rink #4 (COVID 19)



Fourth Avenue ➡

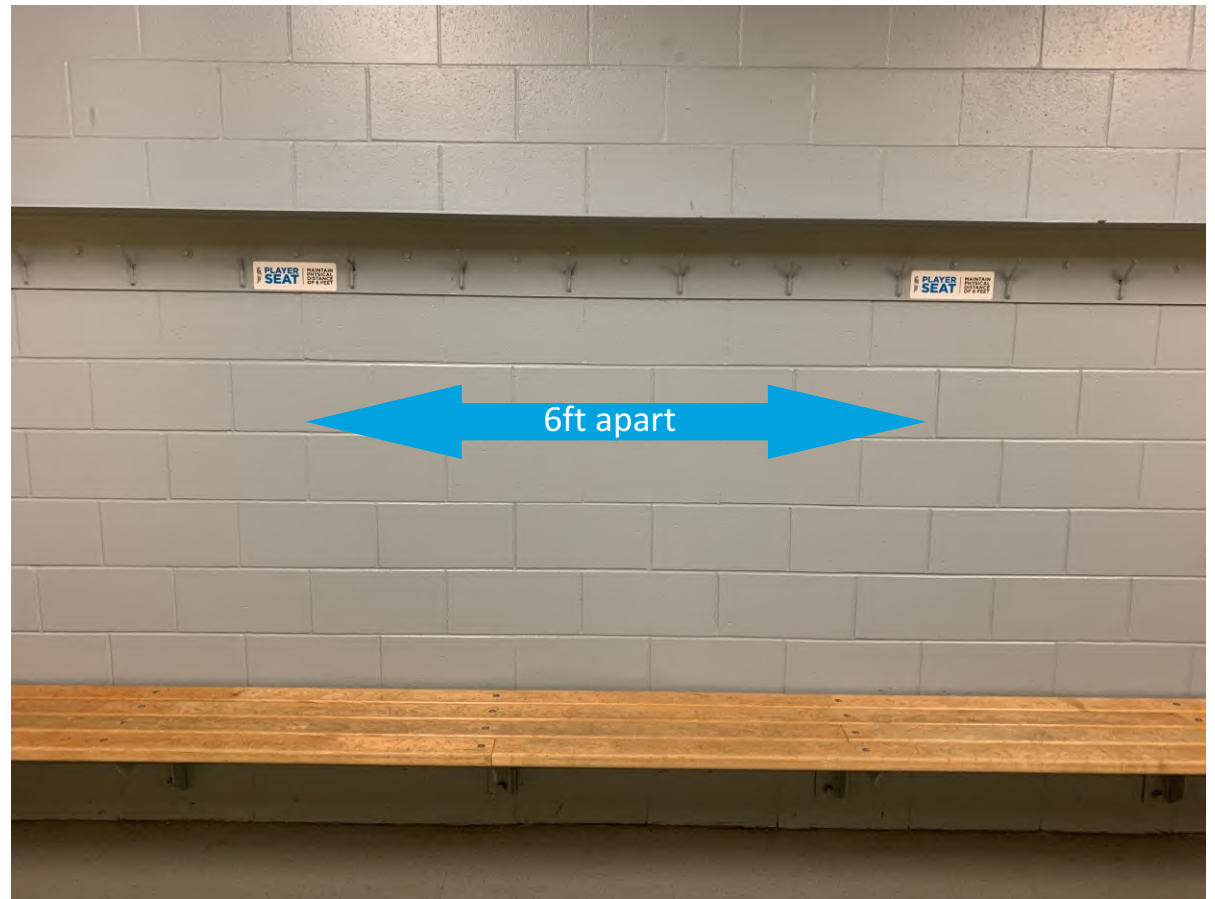
(Rink #2 & #4 rentals have to park in back parking lot)

● = maximum occupancy in each change room

GALE CENTRE CHANGE ROOMS



- Each change room has a max occupancy identified



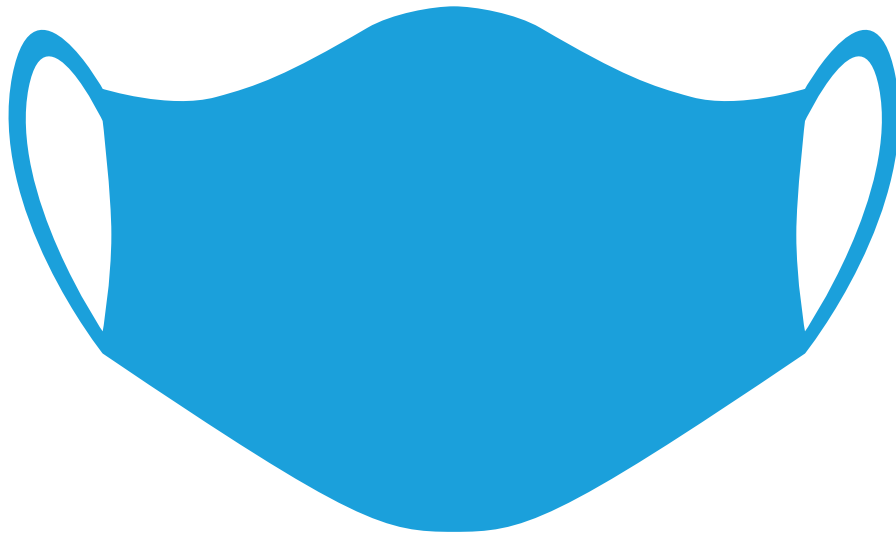
- Stickers have been installed showing that participants must be 6ft apart
- Masked are required in the change room until helmets are on

THANK YOU FOR YOUR COOPERATION

NIAGARAFALLS.CA/COVID19



MASK REQUIRED



**Protect each other
Wear a face covering
Cover your nose, mouth, and chin
Required by the Face Covering By-law**

**Does not apply to children under the age of five
and those who are unable to wear a face covering
as a result of a medical condition or a disability.**

A face covering or mask can be cloth (non-medical) or disposable

niagararegion.ca/COVID19

Niagara  Region


Niagara Falls
CANADA

THE CITY OF NIAGARA FALLS **SELF SCREENING APP** **STOP!**

**FOR THE SAFETY OF EVERYONE,
PLEASE COMPLETE OUR
COVID-19 SELF SCREEN TEST
FOR EMPLOYEES AND VISITORS
TO THE GALE CENTRE BY USING
YOUR SMARTPHONE AND
FOLLOWING THE INSTRUCTIONS
BELOW:**



**1. OPEN YOUR SMARTPHONE'S
CAMERA APP.**

**2. HOLD YOUR PHONE UP TO THIS IMAGE AS
THOUGH YOU WERE GOING TO TAKE A PHOTO OF IT.**

**3. A LINK TO A WEBSITE WILL APPEAR IN A BOX
NEAR THE TOP OF YOUR PHONE'S SCREEN. [TAP THE LINK.](#)**

**4. COMPLETE THE SHORT SCREENING TOOL AND FOLLOW
THE INSTRUCTIONS THAT IT PROVIDES.**

